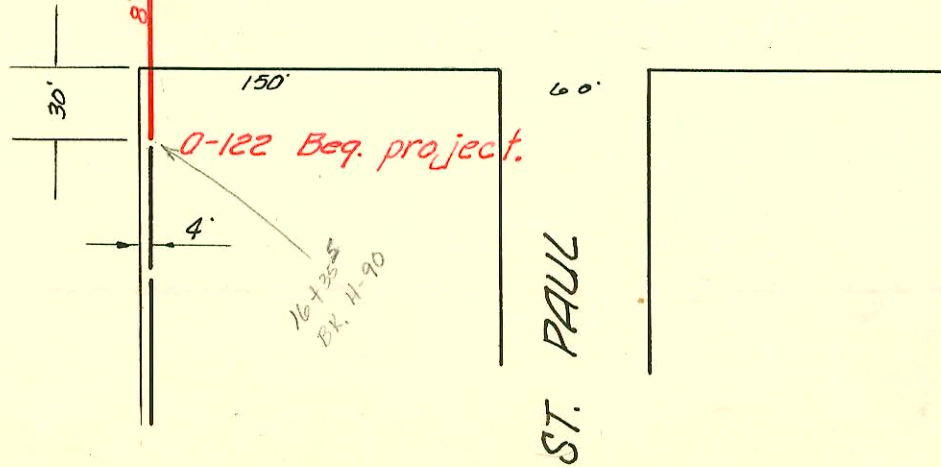
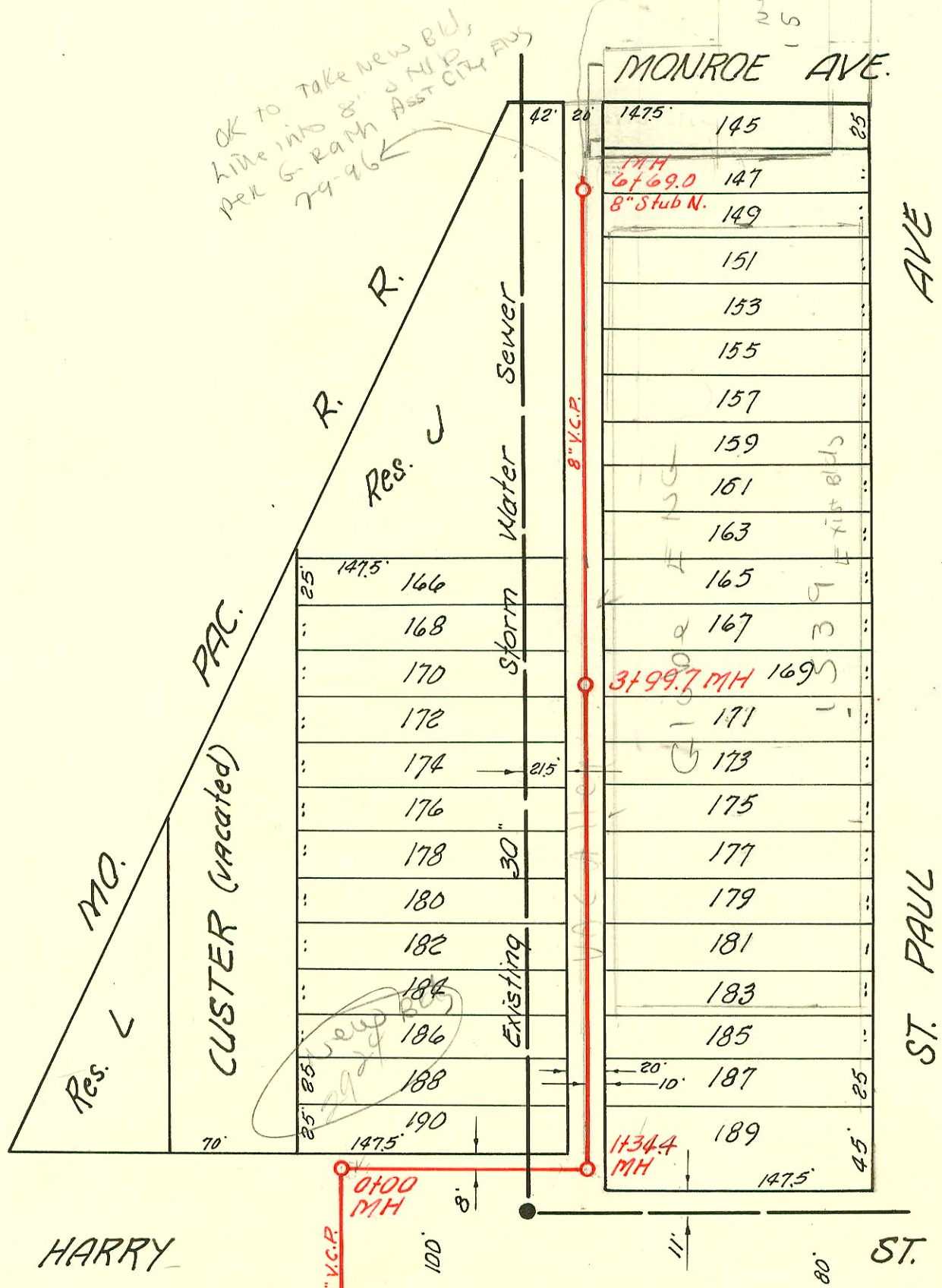


LAT. 16, SUB 3, W. I. S.

W. B. CARTER CONST. CO., SEPT. 10, 1955

BK. NO. K-29, PROJ. NO. C25-51



LAT. 16, S. S. 22

W. B. CARTER CONST. CO. INC., SEPT. 16, 1955

BK. NO. K-28, PROJ. NO. C25-49

