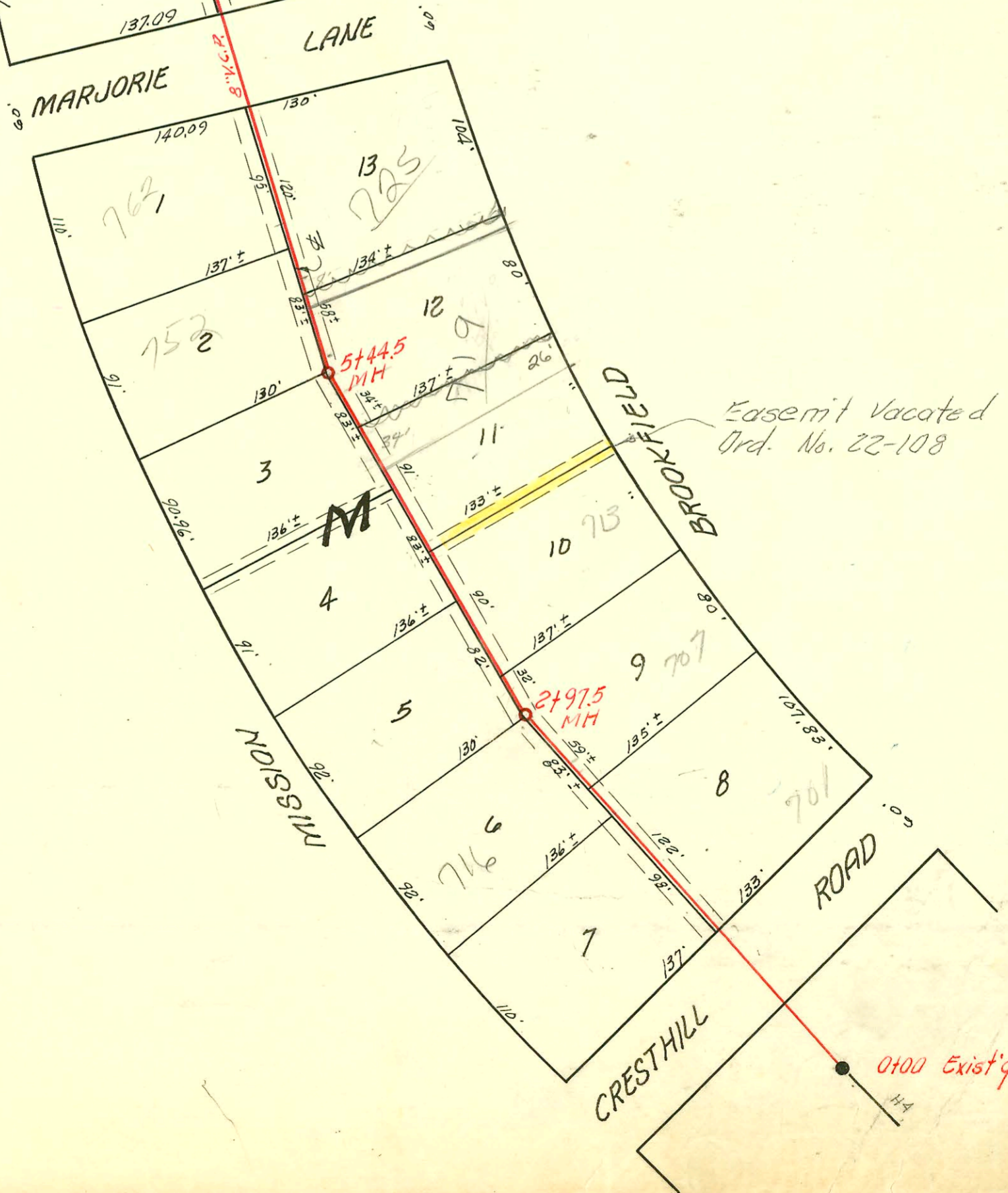


1" = 80'

Easement Vacated
Ord. No. 22-108

LAT. 2, SUB. 5-A, W. I. S.
 UTILITY CONT. INC., MAY 10, 1955
 BK. NO. K-18 PROJ. NO. C25-8



Easement Vacated
Ord. No. 22-108

0100 Exist'g MH

CONSTRUCTION RECORD							SERVICE RECORD					
STATION	ELEVATION		Depth	MANHOLE	4-INCH "Y" BRANCHES		No. of Permit		House Number		DATE OF PERMITS	
	Ground	Grade			North West	South East	North West	South East	North West	South East	North West	South East
0+0	187.1	177.70	9.4	0+00 Existg MH								
1+0	188.3	177.90	10.4									
2+0	189.0	178.10	10.9		1+33.0 2+16 2+27.5	1+30.0	C7906 #5106		7067 Mission Rd 7167 Mission Rd	(Swimming Pool)	7-21-55	4-17-68
3+0	189.6	178.29	11.3	2+97.5			#5776		Brookfield			
					3+11.5		#6177		7247 Mission Rd		8-30-55	
					3+43.5		#4106		724 Mission Rd		4-3-56	
4+0	190.6	178.50	12.1		3+93.5							
					4+33.0							
					4+76.5							
5+0	191.5	178.70	12.8		5+25.5							
					5+58.0		19003 6840		752 N Mission Rd		9-8-57 5-9-58	
6+0	191.1	178.90	12.2	5+44.5								
					6+06.0		5546		725 Brookfield			11-1-57
					6+43.0		4953		762 Mission Rd		8-1-57	
7+0	191.7	179.10	12.6		7+98.0							
8+0	192.1	179.30	12.8		8+01.0		#0564 26624		804 Mission Rd		10-22-50 10-7-55	
					8+71.3							
					8+94.0		#5590		814 Mission Rd		7-14-55	
9+0	192.8	179.50	13.3		9+37.0		#2492		807 Brookfield			9-21-56
					9+66.4		#5780		822 Mission Rd		7-27-55	
10+0	192.2	179.70	12.5		10+31.5							
					10+37.0		8703 #2577		830 Mission Rd		1-14-53 7-13-55	
11+0	192.3	179.90	12.4		11+20.0	11+17.0	#4119		904 Mission Rd		7-13-55	
12+0	190.1	180.10	10.0	12+03.0								
					12+13.5	12+10.5	#848217 #578		914 Mission Rd		3-31-58 7-13-55	
					12+97.5		10435		907 N Brookfield			5-28-57
13+0	189.3	180.30	9.0		13+00.5		#6716		922 Mission Rd		10-24-55	
					13+90.5	13+87.5	986		922 Mission Rd		6-22-56	
14+0	188.6	180.50	8.1		14+79.5	14+76.5						
15+0	188.2	180.70	7.5									
	188.0	180.74	7.3	15+23.0								

Rep 2000-02380-701 N Brookfield - 11600 - Padgett - 4" SCH40 Predco 88'S MH@77.5 (2+09.5) 17W1N CO, 2V22, 1W45, 1W45

Rep 2000-02384-701 N Brookfield - Padgett - 11600 - 4" SCH40 Predco 126'S MH@77.5 (H71'S) 1H22, 1H45, 1W45

Top C26249 - 701 N. Brookfield (swimming pool) - Joe Spaulding - 8/9/71 (1+77.5)

Top C24954 - 701 N. Brookfield (addn) - Jay Satter - 6-17-71 (1+47.5)

Top 71026 MH - 742 N. Mission Rd - Frederick - 12-8-53 (10+16.2)

Top 7161-11P - 716 N. Mission Rd - Frederick - 1-4-56 (4" SCH 40)

4382 Top - 701 N. Brookfield - Clark - 5-13-57

41020 Top - 742 N. Mission Rd - Frederick - 2/20/57

4261 - 701 Brookfield - 6-17-57 - Reynolds

4684 - 719 - 6-11-57 - Reynolds

4804 - 713 - 6-19-57 - A. Ray

5302 Top 741 Brookfield - Reynolds 10-9-57

6086 Top 815 Brookfield building 2-3-58

6778 Top 701 Brookfield 11-30-58

7512 Top 915 Brookfield 7-10-58

445