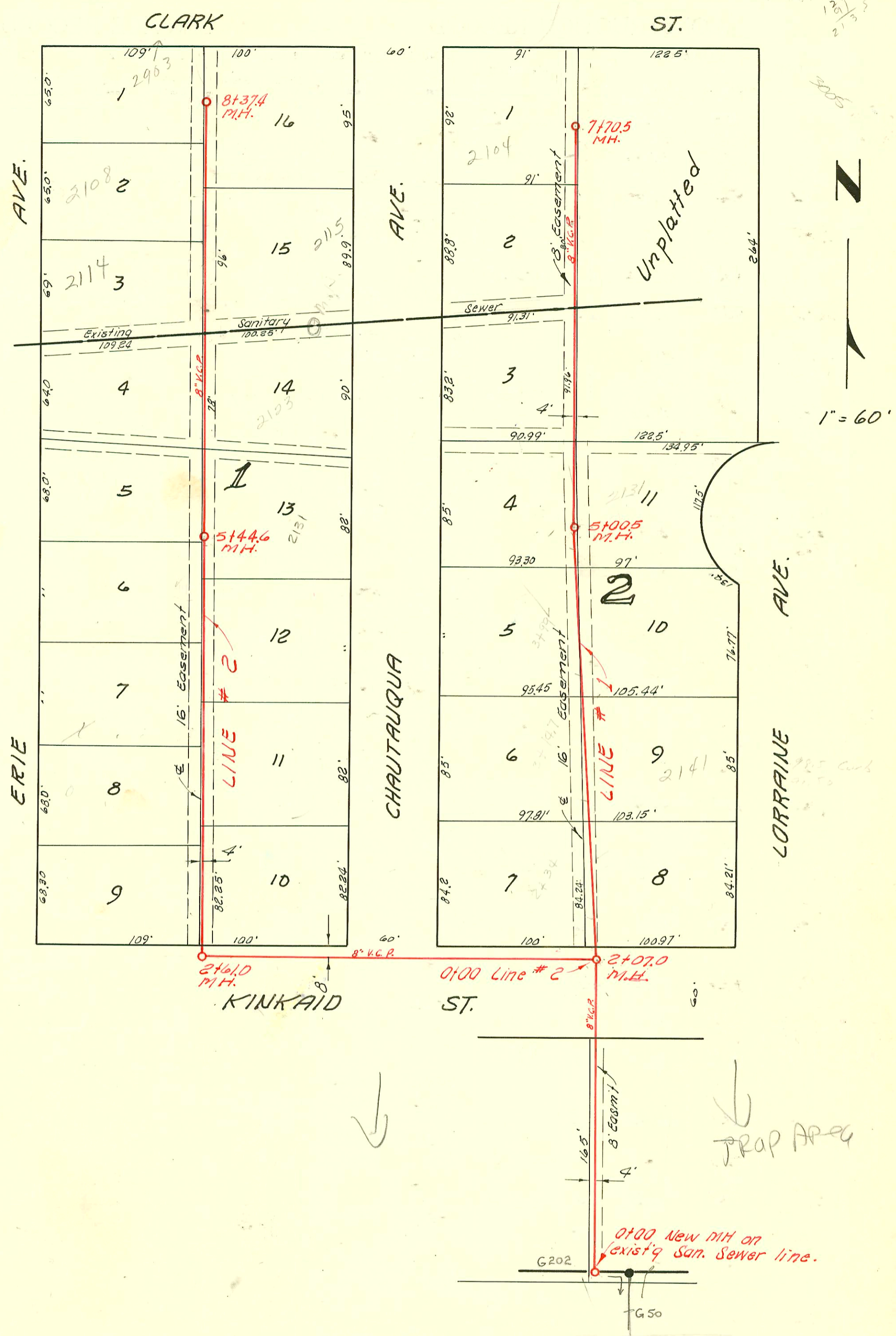


122.5
213.5
213.5



1" = 60'

LAT. II, S. S. 12

UTILITY CONT. INC., MAY 10, 1955

BK. NO. K-23, PROJ. NO. C25-2

CONSTRUCTION RECORD

SERVICE RECORD

STATION	ELEVATION		Depth	MANHOLE	4-INCH "Y" BRANCHES		No. of Permit		House Number		DATE OF PERMITS	
	Ground	Grade			North West	South East	North West	South East	North West	South East	North West	South East
Line #3 Continued	94.1	88.70	5.4	18+40.0								
19+0	94.1	88.80	5.3		18+78.0	18+75.0	45824		3456 S. Bonn			7-11-55
20+0	93.2	89.00	4.2		19+98.0	19+95.0	42637 #2062		2011 W 34 St 3501 S. Hiram			4-5-57 8-21-52
21+0	93.0	89.20	3.8		20+66.5	20+63.5	5084 / 3411		3510 R Bonn 3507 Hiram			10-28-91 8-8-57 12-27-56
	92.5	89.32	3.2	21+51.0	21+34.0	21+31.0	4844	4914706 5510	3576 S. Bonn 3515 R Hiram			7-1-57 8-26-97 11-5-57
22+0	93.1	89.40	3.7			21+97.0		5015	3524 S. Hiram			7-23-57
					22+00.0	22+63.0	53485		3580 S. Bonn 3529 S. Hiram			1-29-76 7-23-57 7-23-57
23+0	93.8	89.60	4.2		23+30.0	23+27.0	7296	7295	3536 R Bonn 3535 S. Hiram			7-10-58 8-15-50 7-10-58 7-10-58
				Repl entire line	23+98.0	23+95.0	7299	5017	3542 Bonn 3541 S. Hiram			7-10-58 7-23-57
24+0	93.6	89.80	3.8		24+66.6	24+63.6	4845	6177	3548 S. Bonn 3547 S. Hiram			7-1-57 1-29-58
	92.5	89.98	2.5	24+80.0								
Line #1					WEST	EAST						
0+0	99.7	91.20	8.5	0+00 New MH								
1+0	98.9	91.30	7.6									
2+0	98.2	91.40	6.8									
	98.7	91.41	7.3	2+07.0								
3+0	99.7	91.50	8.2		2+34.0	2+31.0	4495	#1191	2127 Chautauque 2151 S. Lorraine			5-31-55 6-20-56
					3+14.7	3+11.7	#5417		2146 Chautauque			6-30-55
4+0	100.4	91.60	8.8		3+99.0	3+96.0	#4322	#1192	2125 S. Lorraine 2127 S. Lorraine			5-12-55 6-20-56
5+0					4+83.0	4+80.0	#1788		2130 S. Chautauque			5/11/56
6+0	99.8	91.70	8.1	5+00.5	5+67.0		47474		2127 Chautauque			2-23-56
7+0	98.8	91.80	7.0		6+57.0		49473		2114 Chautauque			2-23-56
	98.4	91.90	6.5		7+39.0		#6491		2104 S. Chautauque			9-16-55
	98.6	91.97	6.6	7+70.5								
Line #2	98.4	91.51	6.9	0+00 = 2+07.0 1/2 Line #1								
1+0	98.2	91.61	6.6									
2+0	98.3	91.71	6.6									
	98.2	91.57 out 91.87 in	6.4 6.3	2+61.0								
3+0	98.4	91.91	6.5		2+87.0	2+84.0		810	2152 S. Chautauque			5-16-56
					3+51.5		811		2150 S. Lorraine			5-16-56
4+0	98.6	92.04	6.6		3+65.4		46784		2147 S. Chautauque			10-25-55
					4+19.0	4+17.0	3679		2140 S. Lorraine			2-6-57
					4+87.0	4+47.0	#5000		2137 S. Chautauque			6-14-55
5+0	97.8	92.11	5.7		5+89.0							
	97.9	92.16	5.7	5+44.6	5+52.0		#1160		2128 S. Lorraine			6-19-56
6+0	97.8	92.21	5.6		6+20.0	6+17.0	#7384		2122 S. Chautauque			5-19-55
					6+96.0	6+99.0	#1402		2114 S. Lorraine			2-23-56
7+0	97.9	92.31	5.6		7+57.0				2105 S. Chautauque			7-16-56
					7+95.0		#534					4-16-56
8+0	98.0	92.41	5.6		8+22.0		1084		2103 S. Lorraine			6-12-56
		92.42		8+37.4								

Line #3
Continued

Line #1

LAT. 11 S. S. #12

Line #2

#6442 - top - 2104 S. Chautauque - Hiram - 9-16-55 6779 Top 2108 S. Lorraine Phipps 4-30-58
 #5824 - top - 3406 S. Bonn - Hiram Phipps 10-5-55 11200 Top 2141 S. Lorraine Hiram Phipps 8-17-59
 #44 - top 6" x 8" 2131 S. Chaut. Lee Hiram 3-29-56
 #738 - top also set 2105 Chautauque - Hiram - 5-10-54
 #1193 - top - 2151 S. Lorraine - Artise Ray Phipps - 6-20-56
 #1943 - top - 2105 S. Lorraine - Hiram - 8-13-56
 #5666 - top - 2105 S. Lorraine - Hiram - 9-26-56
 #3173 - top - 2006 W. 34th - 11-26-56 - Prodie Phipps - (8+60.6 4" sch 40)