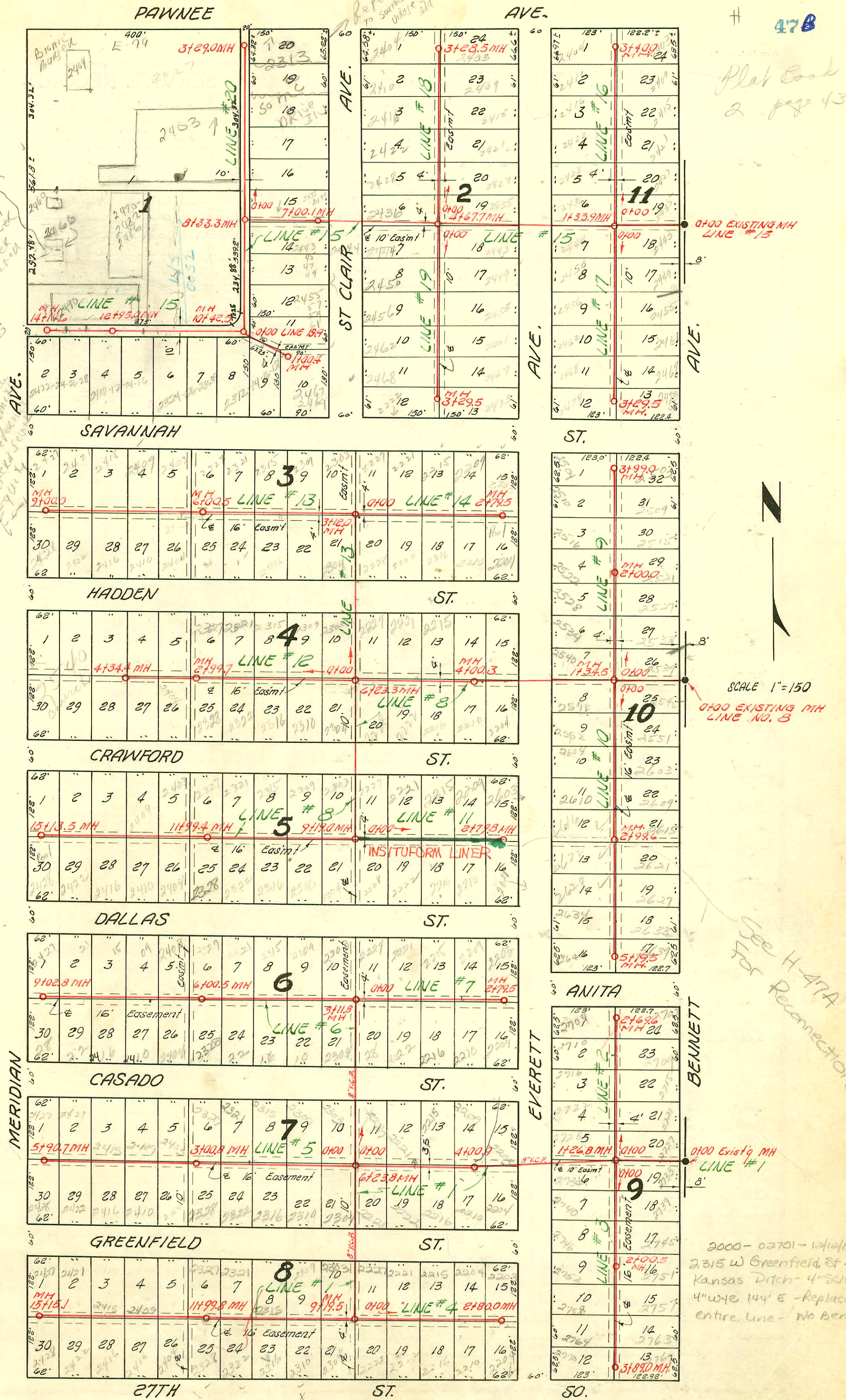


Plat Book
2 page 43

2/27/02
Downstream
2466 S
Meridian
Mue 2118 Bldg
Final permit never
handed to water
sewer.

1. Dan Cappucci
to connect
2. Plan Review
3. Bldg Permit
4. Trade Permit
5. Lateral Sewer
E-79014

NOTE:
Construction record for this project
recorded on pages 47 to 51 inclusive.



SCALE 1"=150
EXISTING MH
LINE NO. 8

See H-47A
For Reconnections

2000-02701-12/12/00
2315 W Greenfield St.
Kansas Ditch- 4" x 14"
4" wye 144" E - Replaced
entire line - No Bends

SEWER RESPONSE PLAN - PHASE IA
PROJ. NO. 468-82420
BUILT BY INSITUFORM PLAINS, INC.
BOOKED 10-11-95 FROM AS BUILTS

LAT. 3, SUB. 3, S. S. 22
W. B. CARTER CONST. CO. INC., APRIL 25, 1955
BK. NO. K-25, PROJ. NO. C25-7

SEE H-47A For
Reconnections

CONSTRUCTION RECORD

SERVICE RECORD

STATION	ELEVATION		Depth	MANHOLE	4-INCH "Y" BRANCHES		No. of Permit		House Number		DATE OF PERMITS	
	Ground	Grade			North West	South East	North West	South East	North West	South East	North West	South East
0+0	98.9	91.30	7.6	0+00 Exist'g MH								
1+0	98.8	91.85	7.0									
2+0	98.8	92.00	6.8	1+26.8	1+95.6		C73162		2728			7-23-79
3+0	98.9	92.15	6.7									
4+0	98.7	92.35	6.4			3+26.9	3+29.9	38201	2209	2210		7-2-91
						3+87.3	3+90.3	1330	2209	2210		7-3-56
4+0	99.2	92.55	6.7	4+00.9		4+51.0	4+54.0	4299	1331	2215	2216	5-25-56
5+0	99.3	92.75	6.6			5+11.5	5+14.5	900	1332	2209	2210	5-25-56
						5+75.2	5+78.2	1205	1333	2209	2210	6-21-56
6+0	99.2	92.95	6.2			9+33.0	9+36.0	840	1321	2304	2305	7-16-55
	99.2	93.00	6.2			9+95.0	9+98.0	841	13174	2304	2305	3-18-69
	93.10	93.10	6.1	6+23.8		10+55.7	10+58.7	218	6812	2315	2316	8-16-55
7+0	98.9	93.25	5.7			11+18.5	11+21.5	213	7171	2315	2316	11-16-51
8+0	99.0	93.45	5.6			11+79.2	11+82.2	514	25129	2315	2316	5-18-56
9+0	98.9	93.65	5.3			12+40.6	12+43.0	6957	7189	2400	2401	5-12-72
	98.9	93.80	5.2	9+19.5		13+03.1	13+06.1	421	5128	2407	2408	5-23-55
10+0	99.3	93.96	5.3			13+66.0	13+69.0	420	7190	2407	2408	6-2-55
11+0	99.2	94.16	5.0			14+27.1	14+30.1	4919	5127	2421	2422	5-23-55
						14+89.9	14+92.9	4918	7188	2421	2422	1-6-56
12+0	99.5	94.36	5.1	11+99.8		15+15.1						
13+0	99.8	94.56	5.2			WEST	EAST					
14+0	99.5	94.76	4.7			0+16.0	0+13.0	73161	7098	2728	2729	7-23-79
15+0	99.5	94.96	4.5			0+75.5	0+72.5	7097	3587	2728	2729	12-21-55
	99.5	94.99	4.5	15+15.1		1+35.6	1+32.6	7096	3589	2716	2715	12-21-55
0+0	98.8	93.40	5.4	9+00 = 1+26.8 in Line #1		1+95.5	1+92.5	7095	617	2716	2715	12-21-55
1+0	99.0	93.80	5.2			2+53.0	2+50.0	7094	6196	2704	2703	12-21-55
2+0	99.1	94.20	4.9			2+99.2	2+96.2					
3+0	98.8	93.00	5.8	0+00 = 1+26.8 in Line #1		0+17.0	0+14.0	1099	3586	2734	2733	12-21-55
1+0	98.9	93.40	5.5			0+74.2	0+71.2	5718	3585	2734	2733	7-25-55
2+0	98.8	93.80	5.0			1+35.5	1+32.5	5717	2008	2746	2745	11-2-00
	98.8	93.80	5.0	2+00.5		1+93.5	1+90.5	5720	1043	2746	2745	6-8-56
3+0	98.7	94.20	4.5			2+54.5	2+51.5	22923	1041	2751	2750	7-23-79
	98.6	94.56	4.0	3+89.0		3+15.6	3+12.6	5106-261	2000-2001	2764	2763	4-11-94
						3+75.8	3+72.8	5107	1045	2764	2763	7-25-55
0+0	98.9	93.69	5.2	0+00 = 9+19.5 in Line #1		NORTH	SOUTH	694	35222	2764	2763	5-4-56
1+0	98.8	94.40	4.4			0+79.4	0+82.4	693				10-5-72
2+0	98.8	94.80	4.0			1+41.8	1+44.8	692	6015	2009	2010	5-4-56
						2+03.0	2+06.0	691	1014	2009	2010	8-9-55
	98.7	95.12	3.6	2+80.0		2+63.0	2+66.0	690	47192	2009	2010	1-6-56

Line #1

Line #2

Line #3

Line #4

7192 - Top - 2209 W. Greenfield - Padgett - 4-2-56 - 4100.9E (3+499)
 # 397 - Top - 2203 Casado - Kennedy Pkg. - 4-2-56 - 4100.9E (3+499)
 10745 Top - 2215 Kennel - Greenfield - 7-13-59 4+40.
 R-2000-00174 - 2209 W Greenfield - Padgett EXC - 4" SCH40 77' W of MH 2180 (2+03.0) 4" Wye Repair - Replaced entire line.
 R-2000-00507 - 2763 S Bennett - A. Henning - 4" SCH40 - Repl entire line - No Alley
 9 50038210701 3/23/95 2316 W 20th St S - Padgett EXC - (142' total 4" sch40 (wye repair) Repl entire line
 Rep-2000-02464 11/13/00 - Padgett - 4" SCH40 - Repl lower 6' of SWR.
 Rep-2000-02411 11/13/00 - Padgett - 4" SCH40 - Repl all but upper 25' of sewer 1122, 1123, 2145

