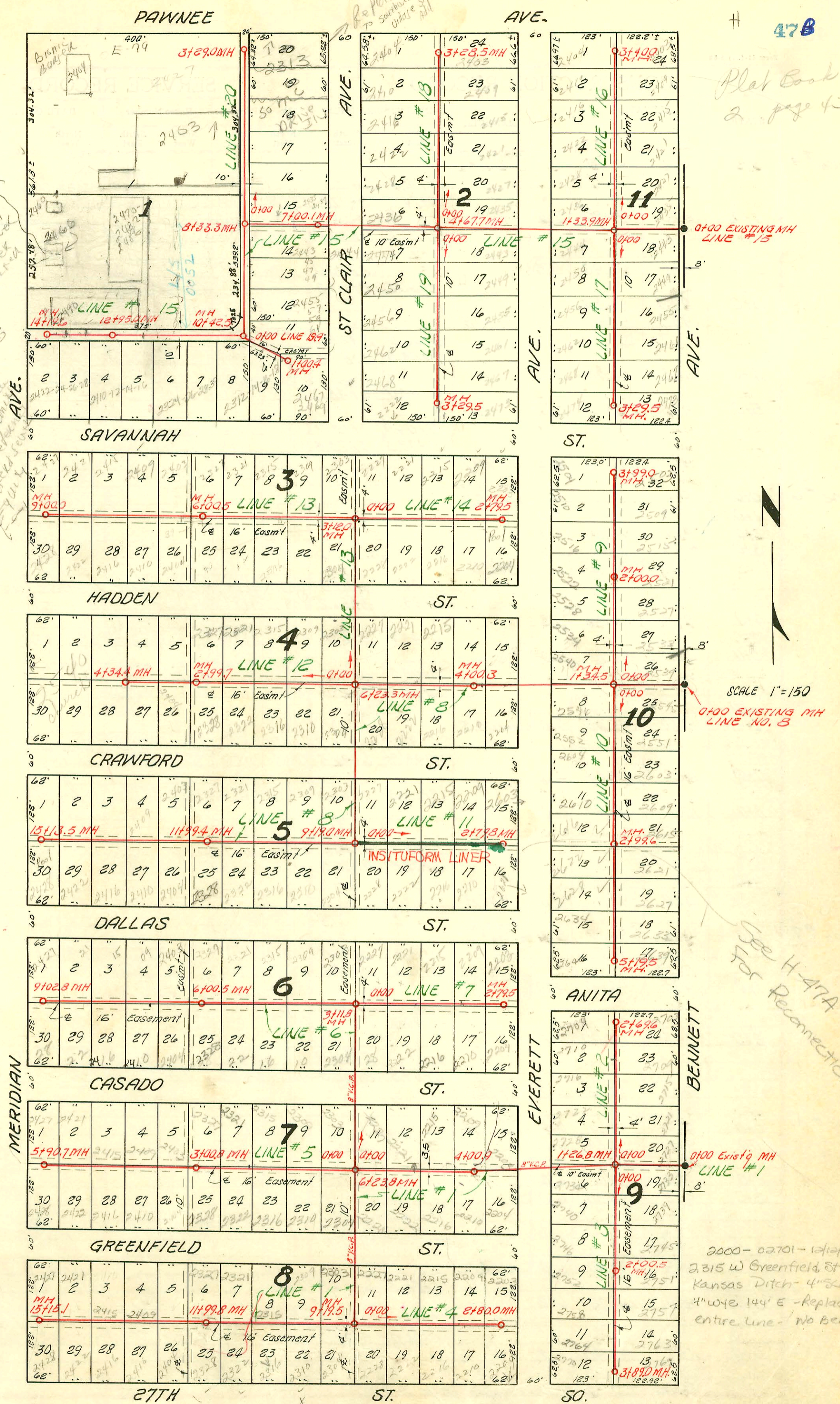


Plat Book  
2 page 43

2/2/02  
Don't connect  
2866 S  
Meridian  
Mue 210 Bldg  
Fin in 1991 - never  
hooked to water  
sewer  
1. Don't connect  
to sewer  
2. Plan sewer  
3. Bldg permit  
4. Transfer  
5. Water  
AVENUE

NOTE: Construction record for this project recorded on pages 47 to 51 inclusive.



SCALE 1"=150'  
0+00 EXISTING MH LINE NO. 8

See H-47A For Reconnections

2000-02701-12/12/00  
2315 W Greenfield St.  
Kansas Ditch - 4" x 4" to  
4" wye 144" E - Replaced  
entire line - No Bends

SEWER RESPONSE PLAN - PHASE IA  
PROJ. NO. 468-82420  
BUILT BY INSITUFORM PLAINS, INC.  
BOOKED 10-11-95 FROM AS BUILTS

LAT. 3, SUB. 3, S. S. 22  
W. B. CARTER CONST. CO. INC., APRIL 25, 1955  
BK. NO. K-25, PROJ. NO. C25-7

SEE H-47A For Reconnections

CONSTRUCTION RECORD

SERVICE RECORD

STATION	ELEVATION		Depth	MANHOLE	4-INCH "Y" BRANCHES		No. of Permit		House Number		DATE OF PERMITS	
	Ground	Grade			North West	South East	North West	South East	North West	South East	North West	South East
Line #5 0+0	99.2	93.10	6.1	0+00 = 6+238 in Line #1								
					0+12.3	0+15.3	901	3284	2303	2304 R	5-25-56	12-3-56
					0+74.8	0+77.8	#1908	3235	2309	2322	5-9-56	12-3-56
1+0	99.0	93.50	5.5		4" SCH 40 1+36.2	4" ABS 40 1+39.2	2000-0018 #1907	411-361837	2315 R	2316 R	3-28-00 see next pg	1-10-91
					1+97.0		#15-25047 #1906	3236	2315 R	2316 R	5-9-56	12-3-56
2+0	99.4	93.90	5.5			2+00.0	78-50A #1905	3237	2322	2322	4-2-98	12-3-56
						2+60.2		3238	2321	2321	5-9-56	12-3-56
3+0	99.9	94.30	5.6									
	99.9	94.30	5.6	3+00.8								
					3+20.6	3+23.6	#1221	#100649	2403	2404 R	8-9-57	6-30-80
					3+84.3	3+87.3	#13071-17	419591	2410 R	2410 R	8-26-91	5-13-87
4+0	100.0	94.70	5.3			4+45.0	#8665	2000-02105	2415 R	2416 R	9-19-00	
						4+48.0	1724	4891	2415 R	2416 R	8-9-57	7-15-57
5+0	99.8	95.10	4.7									
					5+09.0	5+12.0	4892	4892	2421 R	2422 R	7-15-57	9-14-84
					5+72.5	5+75.5	4893	4893	2421 R	2422 R	7-15-57	7-15-57
	99.8	95.46	4.3	5+90.7								
Line #6 0+0	99.2	93.10	6.1	0+00 = 6+238 in Line #1								
1+0	99.2	93.40	5.8									
2+0	99.4	93.70	5.7									
3+0	99.6	94.00	5.6									
	99.6	94.14	5.5	3+11.8								
					3+24.5	3+27.5	8092	4176	2303	2304 R	10-1-58	1-9-57
					3+83.2	3+86.2	8093	4177	2309	2310	10-1-58	
4+0	99.8	94.40	5.4									
					4+48.4	4+51.4	8094	4178	2315	2316	10-1-58	
5+0	100.0	94.70	5.3									
					5+08.5	5+11.5	10742	4179	2321	2322	10-1-58	4-18-00
					5+72.4	5+75.4	1096	4180	2327	2328	10-1-58	2-19-91
6+0	100.0	95.00	5.0	6+00.5								
					6+32.7	6+35.7	8097	4179	2403	2404 R	10-1-58	3-3-80
					6+93.5	6+96.5	0932	4182	2407	2410	10-1-58	
7+0	100.0	95.30	4.7									
					7+59.8	7+62.8	8099	4183	2415	2416	10-1-58	
8+0	100.0	95.60	4.4									
					8+23.0	8+26.0	8100	4184	2421	2422	10-1-58	10-7-99
					8+83.5	8+86.5	8197	4185	2427	2428 R	10-1-58	
9+0	100.0	95.91	4.1	9+02.8								
Line #7 0+0	99.6	94.20	5.4	0+00 = 3+118 in Line #6								
		94.2			0+13.0	0+16.0	8533	3542	2227	2228	10-31-58	11-23-81
					0+76.4	0+79.4	8534	3544	2221	2221	10-31-58	1-9-57
1+0	99.5	94.60	4.9									
					1+35.6	1+38.6	8466	3545	2215	2216 R	10-30-58	1-9-57
					1+99.0		8465		2209 R		10-30-58	
2+0	99.5	95.00	4.5									
					2+02.0	2+02.0	1491	3546	2200-00240	2210 R	1-25-00	1-9-57
					2+59.8	2+62.8	8085	3553	2203	2203	9-27-58	1-9-57
	99.5	95.32	4.2	2+79.5								
Line #8 0+0	99.4	92.60	6.8	0+00 Existg MH								
1+0	99.3	92.86	6.4									
	99.6	92.95	3.6	1+34.5								
2+0	99.5	93.10	6.4									
3+0	99.3	93.30	6.0									
					3+26.0	3+29.0	1967	5601	2200	2204	8-14-56	11-5-57
					3+89.7	3+92.7	1968		2200		8-14-56	
4+0	99.9	93.50	6.4	4+00.3								
					4+53.3	4+56.3	95-1107	6027	2215 R	2216 R	12-7-45	1-9-58
5+0	99.9	93.70	6.2									
					5+13.7	5+16.7	22362	6908	2211 R	2212 R	1-18-81	5-5-58
					5+74.0	5+77.0	#2806	6907	2211 R	2212 R	10-22-56	5-5-58
6+0	100.1	93.90	6.2									

Line #8 continues on page 49

95-15007 6036-107 2210 Crawford Friedrich 2225  
 95-10401-7 7-12-95 2427 Casado -  
 96-17044-7 10-14-96 2204 W Casado - New Conn -

98-5011-7 2327 W. CASADO 41219B  
 4" PVC SCH 40 - FERRO TIED INTO ORANGEBURG  
 APPRX 4' FROM MAIN - WYE 16' WE IR  
 2 HOUSE STUBS & 3 TWIN C.O.'S

2000-00781-2315 W CASADO - 3/28/00 - Bucks Backhoe - 4" SCH40 - ITWIN CO - Tied to claytile stub at back of PL

Reconnect - 2000-02715-12/14/00 - 2416 W Greenfield - Bammes Pibg - 4" SCH40 - CITY TAP 127' E of HH 5+90.7 (4+63.7) - Replaced entire line - ITWIN CO

2000-00240-1/25/00 - 2210 W CASADO - Boardman Ent - 4" SCH40 - Replaced all but lower 1' of swr - ITWIN CO