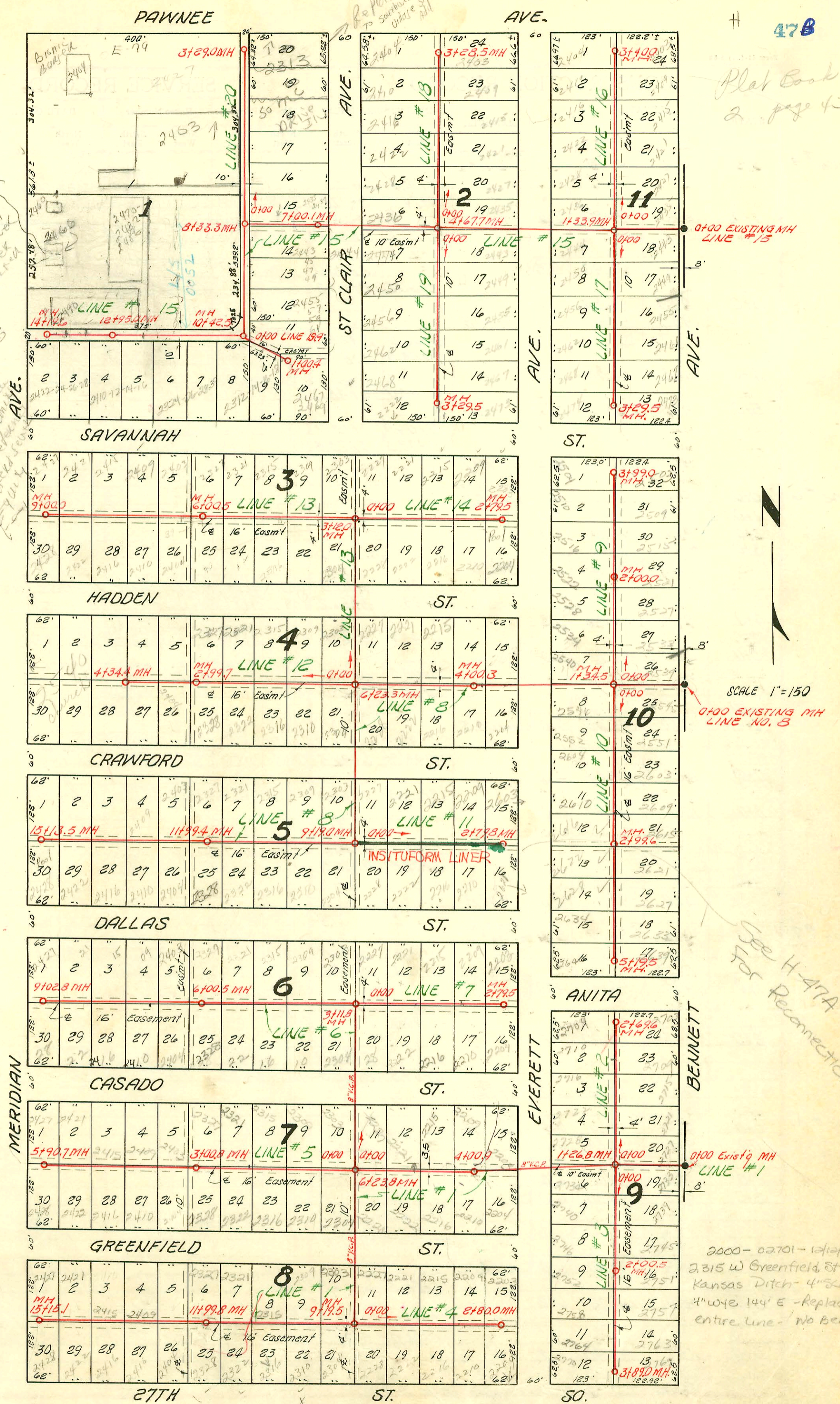


Plat Book
2 page 43

2/2/02
Don't connect
2866 S
Meridian
Mue 210 Bldg
Fin in 1991 - never
hooked to water
sewer
1. Don't connect
to sewer
2. Plan sewer
3. Bldg permit
4. Transfer
5. Water
AVENUE

NOTE: Construction record for this project recorded on pages 47 to 51 inclusive.



SEWER RESPONSE PLAN - PHASE IA
PROJ. NO. 468-82420
BUILT BY INSITUFORM PLAINS, INC.
BOOKED 10-11-95 FROM AS BUILTS

LAT. 3, SUB. 3, S. S. 22
W. B. CARTER CONST. CO. INC., APRIL 25, 1955
BK. NO. K-25, PROJ. NO. C25-7

SEE H-47A For
Reconnections

CONSTRUCTION RECORD

SERVICE RECORD

STATION	ELEVATION		Depth	MANHOLE	4-INCH "Y" BRANCHES		No. of Permit		House Number		DATE OF PERMITS	
	Ground	Grade			North West	South East	North West	South East	North West	South East	North West	South East
	100.0	93.95 out 94.05 in	6.0	6+23.3								
7+0	99.8	94.20	5.6									
8+0	99.7	94.40	5.3									
9+0	99.9	94.60	5.3									
	99.8	94.74 in 94.64 out	5.1 5.2	9+19.0								
					9+32.0	9+35.0	7323	7802	2303	2304 R	6-20-58	6-5-58
					9+94.0	9+97.0	7324	7802	2309	2310	6-20-58	8-19-58
10+0	99.9	94.90	5.0									
					10+56.0	10+59.0	7325	7803	2315	2316	6-20-58	8-19-58
11+0	100.0	95.10	4.9									
					11+19.2	11+22.2	7326	7804	2321	2322	6-20-58	8-19-58
					11+79.5	11+82.5	7327	7805	2327	2328 R	6-20-58	8-19-58
12+0	100.0	95.30	4.7	11+99.4								
					12+39.6	12+42.6	7328	7806	2403	2404	6-20-58	8-19-58
13+0	100.3	95.50	4.8									
					13+03.0	13+06.0	7062	7807	2409	2410	6-4-58	8-19-58
					13+66.5	13+69.5	7063	7808	2415	2416	6-4-58	8-19-58
14+0	100.4	95.70	4.7									
					14+26.9	14+29.9	7064	7809	2421	2422 R	6-4-58	8-19-58
					14+88.5	14+91.5	7065	7810	2427	2428	6-4-58	8-19-58
15+0	100.2	95.90	4.2									
	100.4	95.93	4.4	15+13.5								
0+0	99.5	95.00	4.5	0+00 = 1+34.5 in Line # 8	WEST	EAST						
					0+24.5	0+21.5	4244	7683	2540 R	2539 S	4-3-57	4-30-58
					0+83.0	0+80.0	4248	7622	2524	2523 S	4-3-57	4-4-57
1+0	99.5	95.40	4.1									
					1+46.3	1+43.3	4242	7621	2528	2529 S	4-3-57	4-4-57
2+0	99.6	95.80	3.8	2+00								
					2+08.4	2+05.4	4243	7620	2522 S	2521 S	7-26-56	8-4-57
					2+70.0	2+67.0	4243	7619	2527 R	2526 S	7-26-56	8-4-57
3+0	99.6	96.20	3.4									
					3+32.9	3+29.9	4244	7618	2520 R	2519 S	3-13-57	8-4-57
					3+92.6	3+89.6	4245	7617	2504	2503 S	5-18-56	8-4-58
	99.6	96.60	3.0	3+99.0								
0+0	99.6	93.60	6.0	0+00 = 1+34.5 in Line # 8								
					0+19.0	0+16.0	4246	6784	2556	2555 S	4-3-57	5-14-58
					0+79.7	0+76.7	4247	6787	2552 R	2551 S	2-23-56	5-14-58
1+0	99.4	94.00	5.4									
					1+40.3	1+37.3	4240	6868	2604 R	2603 S	2-21-56	5-14-58
						1+98.0		6869	2609 S		5-14-58	
2+0	99.4	94.40	5.0									
					2+01.0	2+61.2	4249	6870	2610 R	2615 S	2-21-56	5-14-58
3+0	99.5	94.80	4.7	2+99.6								
					3+21.5	3+18.5	4249	6785	2622 R	2621 S	2-21-56	4-30-58
					3+85.1	3+82.1	4243	6786	2628 R	2627 S	2-21-56	4-30-58
4+0	99.3	95.20	4.1									
					4+44.9	4+41.9	4245	6787	2634 R	2633 S	2-21-56	4-30-57
5+0	99.5	95.60	3.9									
					5+03.5	5+00.5	4241	6788	2640 R	2639 S	2-21-56	4-30-57
	99.4	95.68	3.7	5+19.5								
0+0	99.8	94.75	5.0	0+00 = 9+19 in Line # 8	NORTH	SOUTH						
					0+15.9	0+18.9		8459	2221	2219		10-29-58
					0+80.0	0+83.0	7096	8460	2221	2220	6-11-58	10-29-58
1+0	99.8	95.15	4.7									
					1+41.5	1+44.5	7095	7936	2215	2216 R	6-11-58	8-26-58
2+0	99.8	95.55	3.2									
					2+01.0	2+04.0	7094	7935	2209	2210	6-11-58	8-26-58
					2+63.5	2+66.5	7088	7934	2603	2601	6-11-58	8-26-58
	99.6	95.87	3.7	2+79.8								

1322 Top 2227 Crawford get City 6-20-58

