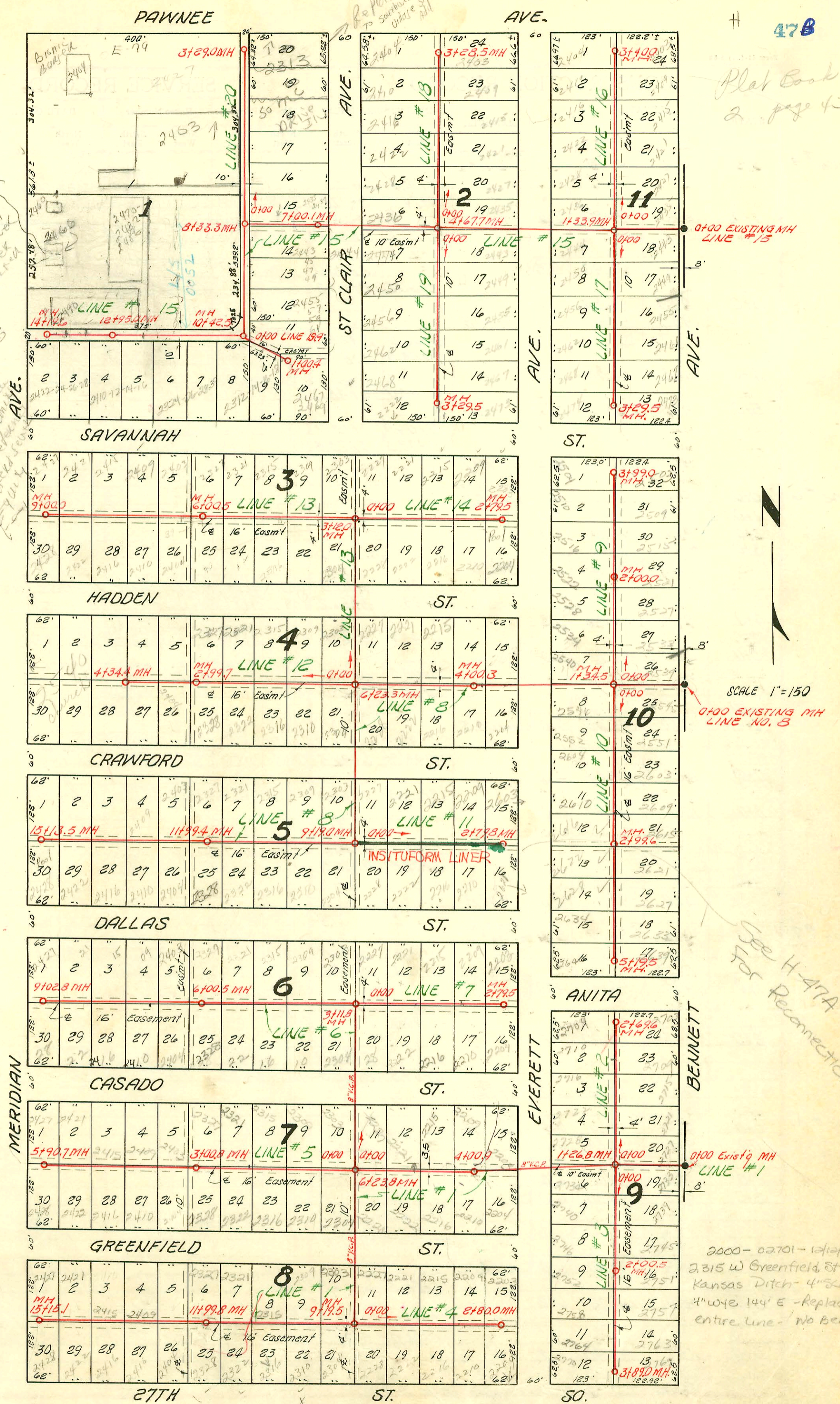


Plat Book
2 page 43

2/2/02
Don't connect
2866 S
Meridian
Mue 210 Bldg
Fin'd in 1991 - never
hooked to water
sewer
1. Don't connect
to sewer
2. Plan sewer
3. Bldg sewer
4. Transfer sewer
5. Water sewer
EQUITY
AVE.

NOTE: Construction record for this project recorded on pages 47 to 51 inclusive.



SCALE 1"=150
EXISTING MH LINE NO. 8

See H-47A
for Reconnections

2000-02701-12/12/00
2315 W Greenfield St.
Kansas Ditch - 4" x 4" to
4" wye 144" E - Replaced
entire line - No Bends

SEWER RESPONSE PLAN - PHASE IA
PROJ. NO. 468-82420
BUILT BY INSITUFORM PLAINS, INC.
BOOKED 10-11-95 FROM AS BUILTS

LAT. 3, SUB. 3, S. S. 22
W. B. CARTER CONST. CO. INC., APRIL 25, 1955
BK. NO. K-25, PROJ. NO. C25-7

SEE H-47A for
Reconnections

CONSTRUCTION RECORD

SERVICE RECORD

Line #12

Line #13

Line #14

Line #15

STATION	ELEVATION		Depth	MANHOLE	4-INCH "Y" BRANCHES		No. of Permit		House Number		DATE OF PERMITS			
	Ground	Grade			North West	South East	North West	South East	North West	South East	North West	South East	North West	South East
0+0	100.0	94.05	6.0	0+00 = 6+23.3 in Line # 8										
					0+14.3	0+17.3	6304	6167	2303	2304 R	2-24-58	4-29-58		
					0+77.5	0+80.5	6305	6770	2309	2310	2-24-58	4-29-58		
1+0	100.1	94.45	5.6		1+38.2	1+41.2	6306	6771	2315 R	2316	4-26-89	4-29-58		
2+0	100.2	94.85	5.4		2+01.4	2+04.4	6307	6772	2321 R	2322	2-13-52	4-29-58		
					2+62.7	2+65.7	6308	6773	2327	2328	2-24-58	4-29-58		
3+0	100.5	95.25	5.2	2+99.7	3+25.0	3+28.5								
					3+88.5	3+91.5								
4+0	100.2	95.65	4.6		4+19.9		6521		2540		9-10-82			
	100.2	95.79	4.4	4+34.4			4594		2541		8-8-55			
0+0	100.0	94.05	6.0	0+00 = 6+23.3 in Line # 8										
1+0	100.0	94.35	5.7											
2+0	100.0	94.65	5.4											
3+0	100.4	94.95	5.4											
	100.4	95.09	5.3	3+12.0	3+22.0	3+25.0	10743	5951	2303 R	2304 R	6-29-59	12-30-57		
					3+88.6	3+91.6	10744	5952	2309	2310	6-29-59	12-30-57		
4+0	100.4	95.35	5.1		4+51.0	4+54.0			20821	2316 - R		6-8-88		
									6033	Hadden		9-9-58		
5+0	100.5	95.65	4.9		5+13.0	5+16.0	10746	6034	2321 R	2322	6-29-59	1-9-58		
					5+74.6	5+77.6	10747	6035	2327	2328	6-29-59	1-9-58		
6+0	100.5	95.95	4.5	6+00.5	6+36.0	6+39.0	10748	6955	2403 R	2404	6-29-59	5-15-57		
					6+98.5		10543		2409 R		6-2-59			
7+0	100.9	96.25	4.6		7+62.0	7+65.0	10749	6954	2415 R	2416	6-29-59	5-15-57		
8+0	101.0	96.55	4.4		8+21.5	8+24.5	10750	6952	2421	2422	6-29-59	5-15-57		
					8+85.3	8+88.3	10751	6680	2427	2428	6-29-59	4-17-58		
9+0	101.0	96.85	4.2	9+00.0										
0+0	100.4	95.90	4.5	0+00 = 3+12 in Line # 13			14647	6859	2221 R	2222	6-29-59	9-6-85		
					0+20.5	0+23.5	10742	5770	2221	2222	6-29-59	8-27-57		
					0+82.8	0+85.8	10741	5774	2221	2222	6-29-59	8-27-57		
1+0	100.3	96.30	4.0		1+43.4	1+46.4	10542	5081	2215	2216	6-2-59	7-25-57		
2+0	100.2	96.70	3.5		2+06.0	2+09.0	10541	4576	2209	2210 R	6-2-59	5-10-57		
					2+46.0	2+49.0	4575		2209	2210	5-10-57			
	100.0	97.02	3.0	2+79.5										
0+0	100.2	91.30	8.9	0+00 = Exist'g MH.										
1+0	100.0	91.90	8.1											
2+0	100.3	92.13	8.2	1+33.9										
3+0	100.2	92.40	7.8											
4+0	100.1	92.80	7.3											
5+0	100.2	93.20	7.0											
6+0	100.2	93.44	6.8	4+67.7										
7+0	100.4	93.60	6.8											
8+0	100.4	94.00	6.4											
9+0	100.7	94.40	6.3	7+00.1	7+18.5	7+12.3			2443-49	2444	5-28-69			
10+0	100.9	94.80	6.1		7+50.5				2439 R	2440	5-9-66	Joe Spaulding		
	100.9	95.03	5.9	8+33.3					2439 R	2440	5-9-66	Joe Spaulding		
9+0	100.8	95.30	5.5											
10+0	100.8	95.70	5.1											
	100.7	95.87	4.7	10+42.5	NORTH	SOUTH								
					10+51.0									
11+0	100.8	96.20	4.6		11+13.0	11+10.0								
					11+70.4	11+67.4								

Line #15 Continues on pg. 51

#3311-Top-2204 Hadden - 818 Blinn - 12-11-52
 13806 Top 2104 Crawford Bowen 2-1-61 (3+12.7 line 12)
 #2543-813190-2315 w. Savannah - Rep. Jerry Boardman - (14' w. of E.P. Rep. Strike Line)

2004-00910-4/5/06-2422 wHadden - DISon SWR, replaced 3' section @ house 4" sch 40 PVC