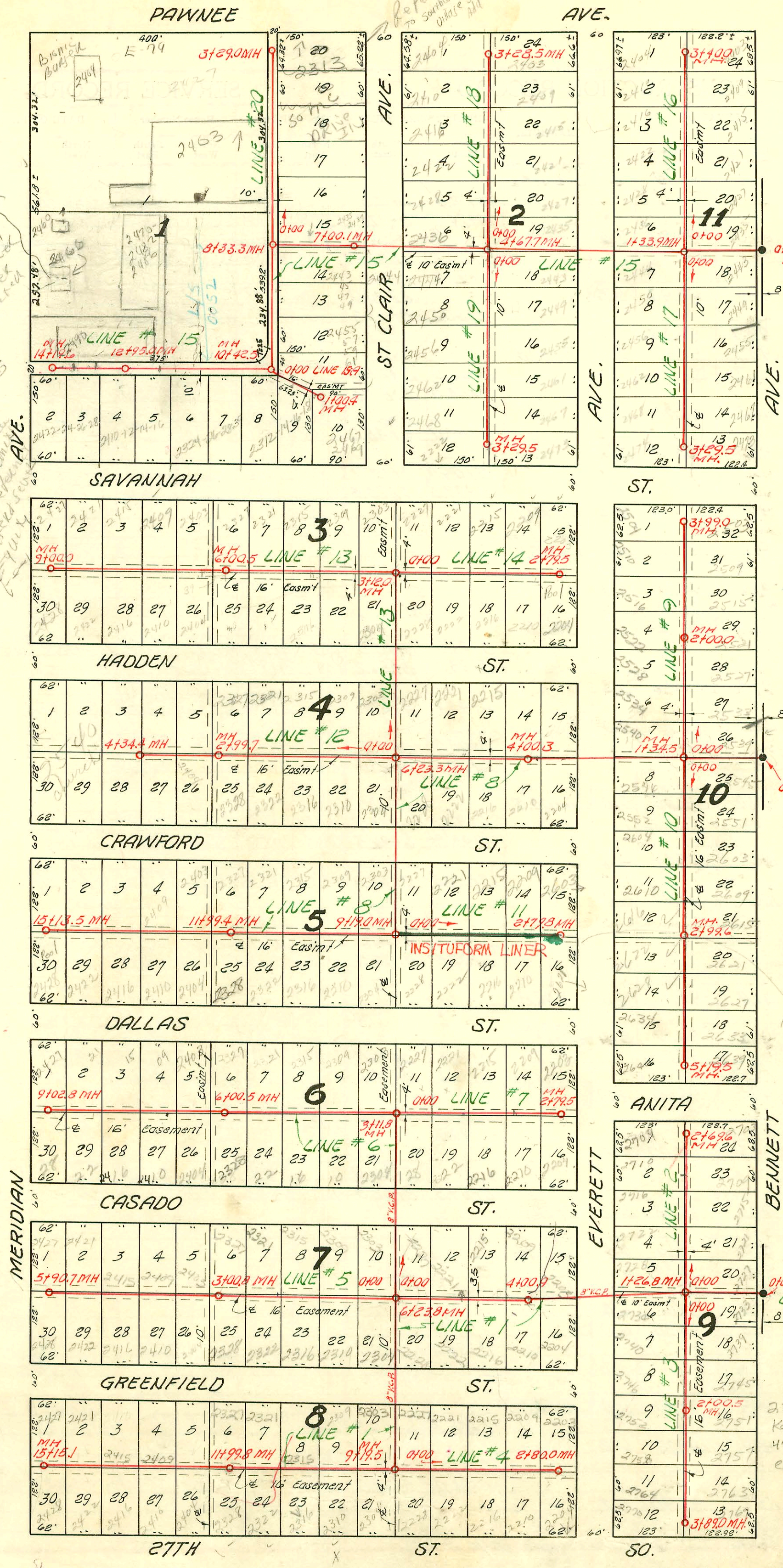


Plat Book
2 page 43

2/27/02
Don't connect
2466 S
Meridian
Mue 2 in Bldg
Final permit never
handed to water
sewer.

1. Dan Cappucci
to connect
2. Plan Review
3. Bldg Permit
4. Trade Permit
5. Lateral Sewer
E-79014

NOTE:
Construction record for this project
recorded on pages 47 to 51 inclusive.



SCALE 1"=150
EXISTING MH
LINE NO. 8

See H-47A
For Reconnections

2000-02701-12/12/00
2315 W Greenfield St.
Kansas Ditch- 4" x 14"
4" wye 144" E - Replaced
entire line - No Bends

SEWER RESPONSE PLAN - PHASE IA
 PROJ. NO. 468-82420
 BUILT BY INSITUFORM PLAINS, INC.
 BOOKED 10-11-95 FROM AS BUILTS

LAT. 3, SUB. 3, S. S. 22
 W. B. CARTER CONST. CO. INC., APRIL 25, 1955
 BK. NO. K-25, PROJ. NO. C25-7

SEE H-47A For
Reconnections

CONSTRUCTION RECORD

SERVICE RECORD

Line # 15
Continued

Line # 15-A

Line # 16

Line # 17

Line # 18

Line # 19

Line # 20

| STATION | ELEVATION | | Depth | MANHOLE | 4-INCH "Y" BRANCHES | | No. of Permit | | House Number | | DATE OF PERMITS | |
|---------|-----------|-------|-------|------------------------------|---------------------|------------|---------------|------------|---------------|------------|-----------------|------------|
| | Ground | Grade | | | North West | South East | North West | South East | North West | South East | North West | South East |
| | | | | | | | | | | | | |
| 12+0 | 101.0 | 96.60 | 4.4 | | 12+32.8 | | C28625 | | 2470-86 | | 10-20-71 | |
| | | | | | 12+26.4 | 12+23.4 | | | | | | |
| | | | | | 12+92.3 | 12+89.3 | | | | | | |
| 13+0 | 101.3 | 97.00 | 4.3 | 12+95.0 | 12+77.2 | | C14262 | | 2410-12-14-16 | | 5-28-69 | |
| | | | | | 13+44.6 | | C14263 | | 2422-24-26-28 | | 5-28-69 | |
| 14+0 | 101.4 | 97.40 | 4.0 | | 13+52.5 | 13+49.5 | C30225 | | 2490-2 | | 1-28-72 | |
| | | | | | 13+81.0 | | C27723 | | 2460-8 | | 9-7-71 | |
| | | | | | 14+13.4 | 14+10.4 | | | | | | |
| 0+0 | 100.7 | 96.00 | 4.7 | 0+100 = 10+42.5 in Line # 15 | 0+29.0 | 0+32.0 | | | | | | |
| | | | | | | 0+90.0 | | | | | | |
| 1+0 | 100.2 | 96.40 | 3.8 | 1+00.4 | 0+93.4 | | C14251 | | 2467-678 | | 5-28-69 | |
| 0+0 | 100.3 | 94.80 | 5.5 | 0+100 = 1+33.9 in Line # 15 | WEST | EAST | | | | | | |
| | | | | | 0+21.2 | 0+18.2 | | | | | | |
| | | | | | 0+79.5 | 0+76.5 | | | | | | |
| 1+0 | 100.2 | 95.20 | 5.0 | | 1+38.0 | 1+35.0 | | | | | | |
| | | | | | | 1+98.5 | | | | | | |
| 2+0 | 100.3 | 95.60 | 4.7 | | 2+01.5 | | | | | | | |
| | | | | | 2+62.0 | 2+59.0 | | | | | | |
| 3+0 | 100.3 | 96.00 | 4.3 | | 3+30.0 | 3+27.0 | | | | | | |
| | | | | | | | | | | | | |
| | 100.5 | 96.16 | 4.3 | 3+40.0 | | | | | | | | |
| 0+0 | 100.3 | 95.20 | 5.1 | 0+100 = 1+33.9 in Line # 15 | 0+18.8 | 0+15.0 | | | | | | |
| | | | | | 0+78.0 | 0+75.0 | | | | | | |
| 1+0 | 100.4 | 95.60 | 4.8 | | 1+41.0 | 1+38.0 | | | | | | |
| | | | | | | 1+98.0 | | | | | | |
| 2+0 | 99.9 | 96.00 | 3.9 | | 2+01.0 | | | | | | | |
| | | | | | 2+65.2 | 2+62.2 | | | | | | |
| 3+0 | 99.8 | 96.40 | 3.4 | | 3+23.7 | 3+20.7 | | | | | | |
| | | | | | | | | | | | | |
| | 99.8 | 96.52 | 3.3 | 3+29.5 | | | | | | | | |
| 0+0 | 100.2 | 94.90 | 5.3 | 0+100 = 4+67.7 in Line # 15 | 0+17.5 | 0+14.5 | | | | | | |
| | | | | | 0+78.0 | 0+75.0 | | | | | | |
| 1+0 | 100.3 | 95.30 | 5.0 | | 1+39.4 | 1+36.4 | | | | | | |
| | | | | | | 1+97.5 | | | | | | |
| 2+0 | 100.4 | 95.70 | 4.7 | | 2+00.5 | | | | | | | |
| | | | | | 2+63.5 | 2+60.5 | | | | | | |
| 3+0 | 100.4 | 96.10 | 4.3 | | 3+23.3 | 3+20.3 | | | | | | |
| | | | | | | | | | | | | |
| | 100.4 | 96.22 | 4.2 | 3+28.5 | | | | | | | | |
| 0+0 | 100.2 | 95.70 | 4.5 | 0+100 = 4+67.7 in Line # 15 | 0+18.0 | 0+15.0 | | | | | | |
| | | | | | 0+80.0 | 0+77.0 | | | | | | |
| 1+0 | 100.1 | 96.10 | 4.0 | | 1+40.9 | 1+37.9 | | | | | | |
| | | | | | | | | | | | | |
| 2+0 | 100.1 | 96.50 | 3.6 | | 2+04.7 | 2+01.7 | | | | | | |
| | | | | | 2+65.7 | 2+62.7 | | | | | | |
| 3+0 | 100.2 | 96.90 | 3.3 | | 3+24.0 | 3+21.0 | | | | | | |
| | | | | | | | | | | | | |
| | 100.4 | 97.02 | 3.4 | 3+29.5 | | | | | | | | |
| 0+0 | 100.9 | 95.10 | 5.8 | 0+100 = 8+33.3 in Line # 15 | WEST | EAST | | | | | | |
| | | | | | | 0+15.0 | | | | | | |
| | | | | | | 0+75.0 | | | | | | |
| 1+0 | 100.8 | 95.50 | 5.3 | | | 1+35.0 | | | | | | |
| | | | | | | | | | | | | |
| | 101.0 | 95.90 | 5.1 | | 1+98.0 | 1+95.0 | | | | | | |
| 2+0 | 101.0 | | | | | 2+58.0 | | | | | | |
| | | | | | | 2+58.0 | | | | | | |
| 3+0 | 100.8 | 96.30 | 4.5 | | 3+17.9 | 3+14.9 | | | | | | |
| | | | | | | | | | | | | |
| | 101.0 | 96.42 | 4.6 | 3+29.0 | | | | | | | | |

B1048-2423 71 Avenue - Bennett - 3-16-64 - Top 7+56.3 - Line 20

#26305 10+190 2467 S. Bennett - Henning

R- 2000-00528 - 2-29-00 - 2445. EVERETT - AE HENNING - REPL ENTIRE LINE

R- 2000-01383 - 2415 E Everett Ave - Woodard PUb - Tied to Y with Donut 120' N of MH 0+00 + 2' E of WPL
96704-7-R-1-22-96 2468 S Everett