

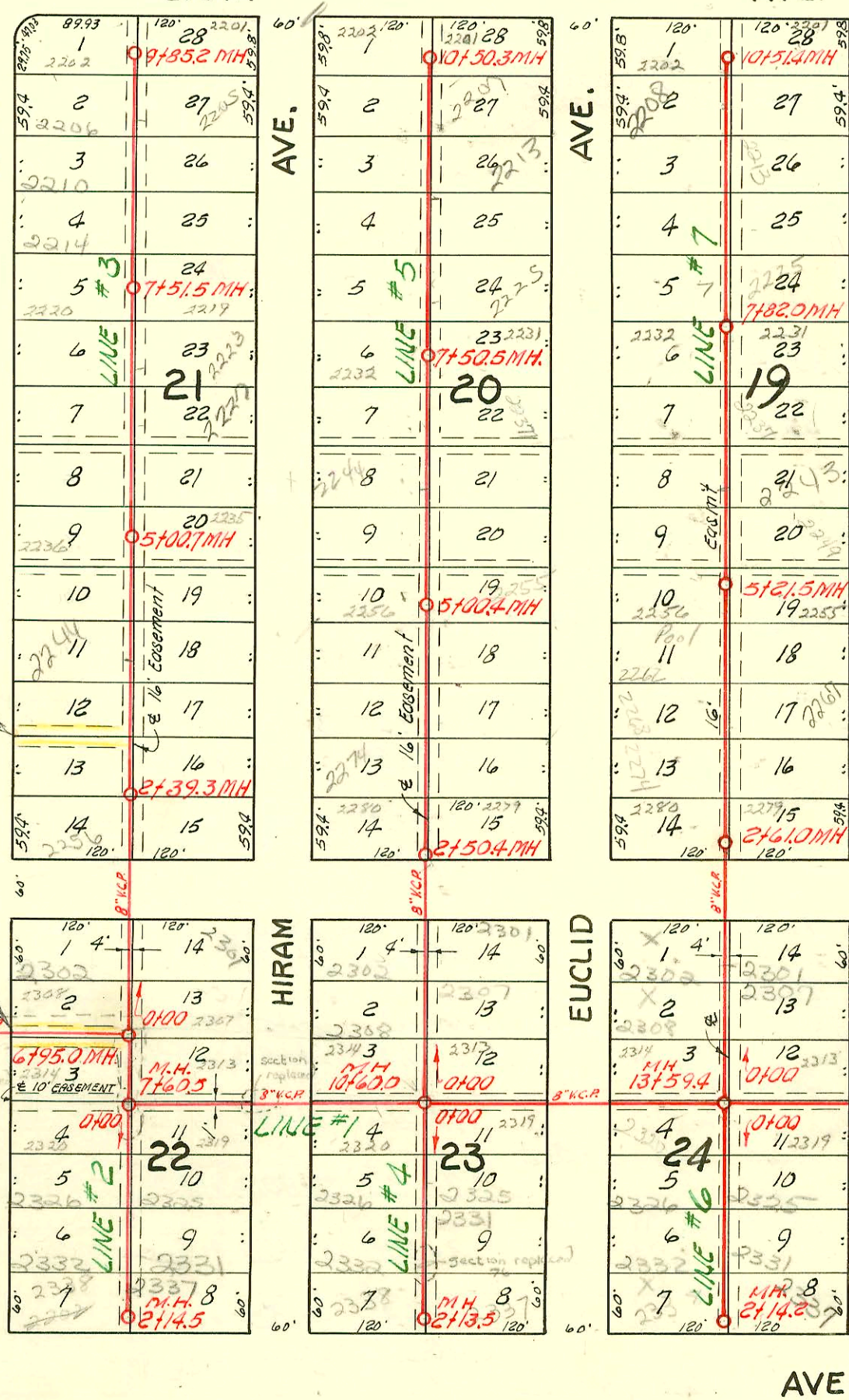
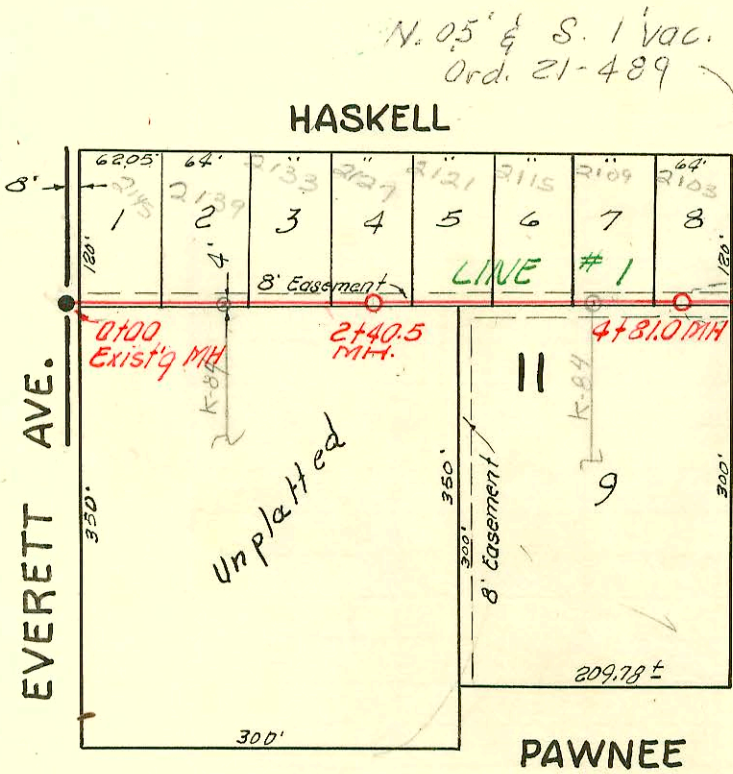
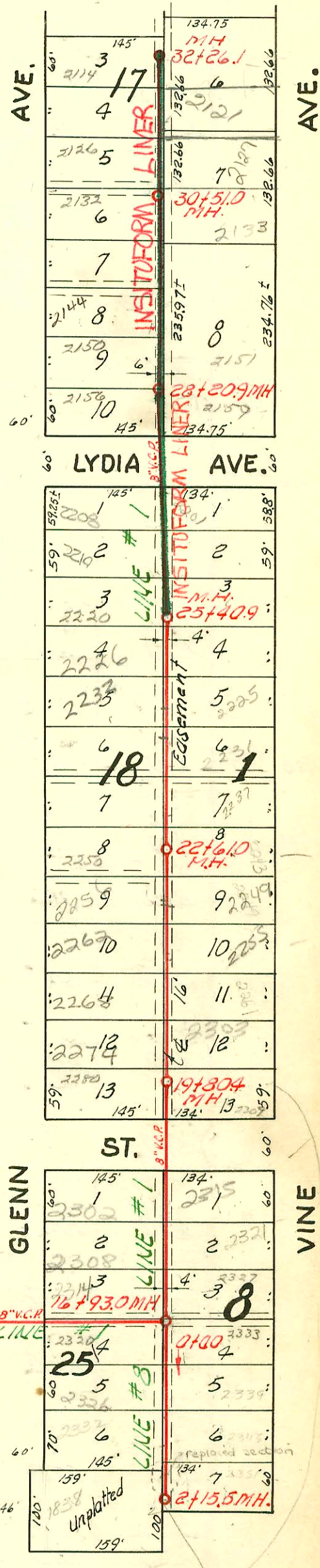
NOTE:

Construction Record for this project booked on pages 52 to 55 inclusive.



Scale 1" = 150'

SEWER RESPONSE PLAN - PHASE 1A
 PROJ. NO. 468-82470
 BUILT BY INSITUFORM PLAINS, INC.
 BOOKED 10-9-95 FROM AS BUILTS
SEWER RESPONSE PLAN - PHASE 1B
 PROJ. NO. 468-82542 (621193)
 BUILT BY INSITUFORM PLAINS, INC.
 BOOKED 7/23/97 FROM AS BUILTS



RECONNECTIONS

STATION	ADDRESS	DIRECTION
28+15.9	2159 S. Vine	East
27+82.5	2156 S. Glenn	West
26+58.8	2208 S. Glenn	West
26+55.8	2201 S. Vine	East
26+02	2214 S. Glenn	West
26+00	2207 S. Vine	East
32+19.1	2115 S. Vine	East
32+01	2114 S. Glenn	West
31+44.4	2120 S. Glenn	West
31+41.7	2121 S. Vine	East
30+91.7	2127 S. Vine	East
30+81.9	2126 S. Glenn	West
30+24.5	2132 S. Glenn	West
30+21.7	2133 S. Vine	East
29+64.5	2138 S. Glenn	West
29+61.7	2141 S. Vine	East
29+00.8	2144 S. Glenn	West
28+98.1	2147 S. Vine	East
28+44.1	2150 S. Glenn	West
28+41.4	2153 S. Vine	East

2313 Hiram 2 to be converted in
 2314 Bonn 3 same place on
 re-constructed line
 by mid-state - 6-19-75
 (old line collapsed)
 (See M300 for repair of Line 1)

LAT. 1, SUB. 3, S. S. 22

BUILDERS CONST. INC., MAY 11, 1955

BK. NO. K-29, PROJ. NO. C24-82

