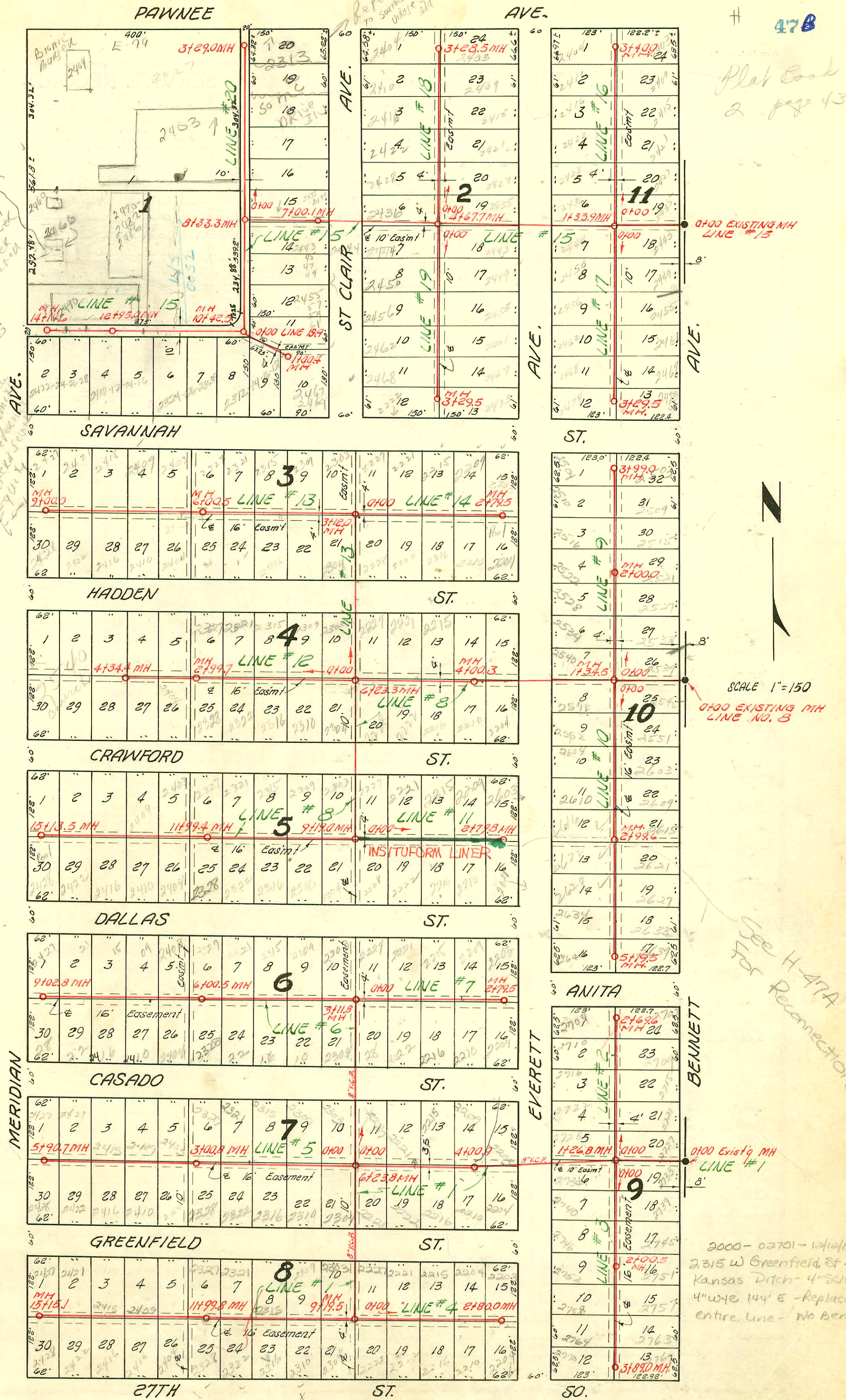


Plat Book
2 page 43

2/27/02
Don't connect
2466 S
Meridian
Mue 2 in Bldg
Final permit never
handed to water
sewer.
1. Dan Cappucci
to connect
2. Plan Review
3. Bldg Permit
4. Trade Permit
5. Lateral Sewer
E-79014

NOTE:
Construction record for this project
recorded on pages 47 to 51 inclusive.



SCALE 1"=150
EXISTING MH
LINE NO. 8

See H-47A
For Reconnections

2000-02701-12/12/00
2315 W Greenfield St.
Kansas Ditch- 4" x 14"
4" wye 144" E - Replaced
entire line - No Bends

SEWER RESPONSE PLAN - PHASE IA
PROJ. NO. 468-82420
BUILT BY INSITUFORM PLAINS, INC.
BOOKED 10-11-95 FROM AS BUILTS

LAT. 3, SUB. 3, S. S. 22
W. B. CARTER CONST. CO. INC., APRIL 25, 1955
BK. NO. K-25, PROJ. NO. C25-7

SEE H-47A For
Reconnections

CONSTRUCTION RECORD

SERVICE RECORD

STATION	ELEVATION		Depth	MANHOLE	4-INCH "Y" BRANCHES		No. of Permit		House Number		DATE OF PERMITS	
	Ground	Grade			North West	South East	North West	South East	North West	South East	North West	South East
30+0	102.6	96.40	6.2		29+58.0	29+55.0	#4894	#5531	2138 S. Vine	2141 S. Vine	6-20-55	7-11-55
	102.7	96.50	6.2	30+51.0	30+19.4	30+16.4	#4893	#7219	2132 S. Vine	2132 S. Vine	6-20-55	1-11-56
31+0	102.8	96.60	6.2		30+78.2	30+75.2	#5124	#5124	2126 S. Vine		8-10-55	6-20-55
	102.8	96.60	6.2		31+41.0	31+38.0	#4891	#26501 #6793	2120 S. Vine	2120 S. Vine	6-20-55	12-26-90 12-5-55
32+0	102.9	96.85	6.0	32+26.1	32+00.0	32+17.0	#4890	#4731	2114 S. Vine	2115 S. Vine	6-20-55	5-24-55
	100.9	92.66	8.2	0+00=7+60.5 in Line #1	0+22.5	0+19.5	#6078	#6085	2320 S. Vine	2319 S. Vine	8-22-55	8-22-55
1+0	100.8	92.86	7.9		0+83.0	0+80.0	#6079	#6086	2320 S. Vine	2320 S. Vine	8-22-55	8-22-55
	101.0	93.06	7.9		1+41.9	1+38.9	#6080	#6087	2322 S. Vine	2321 S. Vine	8-22-55	8-22-55
2+0	100.8	93.09	7.7	2+14.5	2+02.0		#6081		2322 S. Vine		7-22-55	
	101.1	93.33	7.8		0+17.5	0+14.5	#6083		2327 S. Vine		8-22-55	
1+0	101.1	93.53	7.6		0+76.0	0+73.0						
	101.3	93.63	7.7	2+39.3	1+98.5	1+95.5						
3+0	101.3	93.73	7.6		2+60.0	2+57.0	#6423	#6743	2252 S. Vine	2255 S. Vine	9-15-55	10-18-55
	101.3	93.93	7.4		3+15.4	3+12.4	#6422	#6742	2248 S. Vine	2245 S. Vine	9-15-55	10-18-55
4+0	101.3	93.93	7.4		3+73.5	3+70.5	#6421	#6741	2244 S. Vine	2242 S. Vine	9-15-55	10-18-55
	101.4	94.13	7.3	5+00.7	4+38.5	4+35.5	#6420	#6740	2240 S. Vine	2239 S. Vine	9-15-55	10-18-55
5+0	101.4	94.13	7.3		4+95.8	4+92.8	#6419	#6739	2238 S. Vine	2235 S. Vine	9-16-55	10-18-55
	101.5	94.33	7.2		5+56.7	5+53.7	#6418	#6738	2232 S. Vine	2231 S. Vine	9-15-55	10-18-55
6+0	101.5	94.33	7.2		6+11.0	6+08.0	#6417	#6737	2228 S. Vine	2227 S. Vine	9-15-55	10-18-55
	101.5	94.53	7.0		6+71.3	6+68.3	#6416	#6736	2224 S. Vine	2223 S. Vine	9-15-55	10-18-55
7+0	101.5	94.53	7.0		7+28.6	7+25.6	#6415	#6735	2220 S. Vine	2219 S. Vine	9-15-55	10-18-55
	101.5	94.63	6.9	7+51.5	7+93.0	7+90.0	#6414	#6734	2214 S. Vine	2213 S. Vine	9-15-55	10-18-55
8+0	101.4	94.73	6.7		8+50.0	8+47.0	#6413	#6733	2210 S. Vine	2209 S. Vine	9-15-55	10-18-55
	101.5	94.93	6.6		9+16.8	9+13.8	#6412	#6732	2206 S. Vine	2205 S. Vine	9-15-55	10-18-55
9+0	101.6	95.10	6.5	9+85.2	9+68.3	9+65.3					5-26-52	10-18-55
	100.9	92.78	8.1	0+00=10+60.0 in Line #1	0+26.0	0+23.0	#338	#00064	2320 S. Vine	2317 S. Vine	3-27-56	4-14-80
1+0	100.4	92.98	7.4		0+84.6	0+81.6	#10835	#4748	2326 S. Vine	2325 S. Vine	3-27-56	4-14-55
	100.5	93.18	7.3		1+49.0	1+46.0	#15426	#4747	2322 S. Vine	2321 S. Vine	4-9-56	4-14-55
2+0	100.6	93.21	7.4	2+13.5	1+99.3	1+96.3	#4726		2337 S. Vine		4-14-55	
	100.6	93.21	7.4		2+02.3		#2662		2338 S. Vine		1-18-2000	10-4-66

Line #2

Line #3

Line #4

#5532 tap - 2137 S. Vine - 1-12-55
 #20632 tap - 2301 S. Vine - 8-22-55
 #6088 tap - 2337 S. Vine - 8-22-55
 #6075 tap - 2302 S. Vine - 8-22-55
 #340 tap - 2332 S. Vine - 3-27-56
 #6076 tap - 2308 S. Vine - 11-18-55
 #6731 tap - 2201 S. Vine - 11-18-55
 #6749 tap - 2255 S. Vine - 11-18-55
 #6411 tap - 2202 S. Vine - 11-18-55
 #6422 tap - 2256 S. Vine - 9-15-55
 #25639 - 6-28-90 - 2107 S. Vine - 200N shallow (30+88)

2001-02918-111561- Roto-Rooter- Pipe Burst Repl - 4" PE SDR17 - 4" Wye Repaired - 53' N of MH 5100.7 (5+53.0)
TWIN CO @ house, Replaced entire Line, 2H45, 1V45