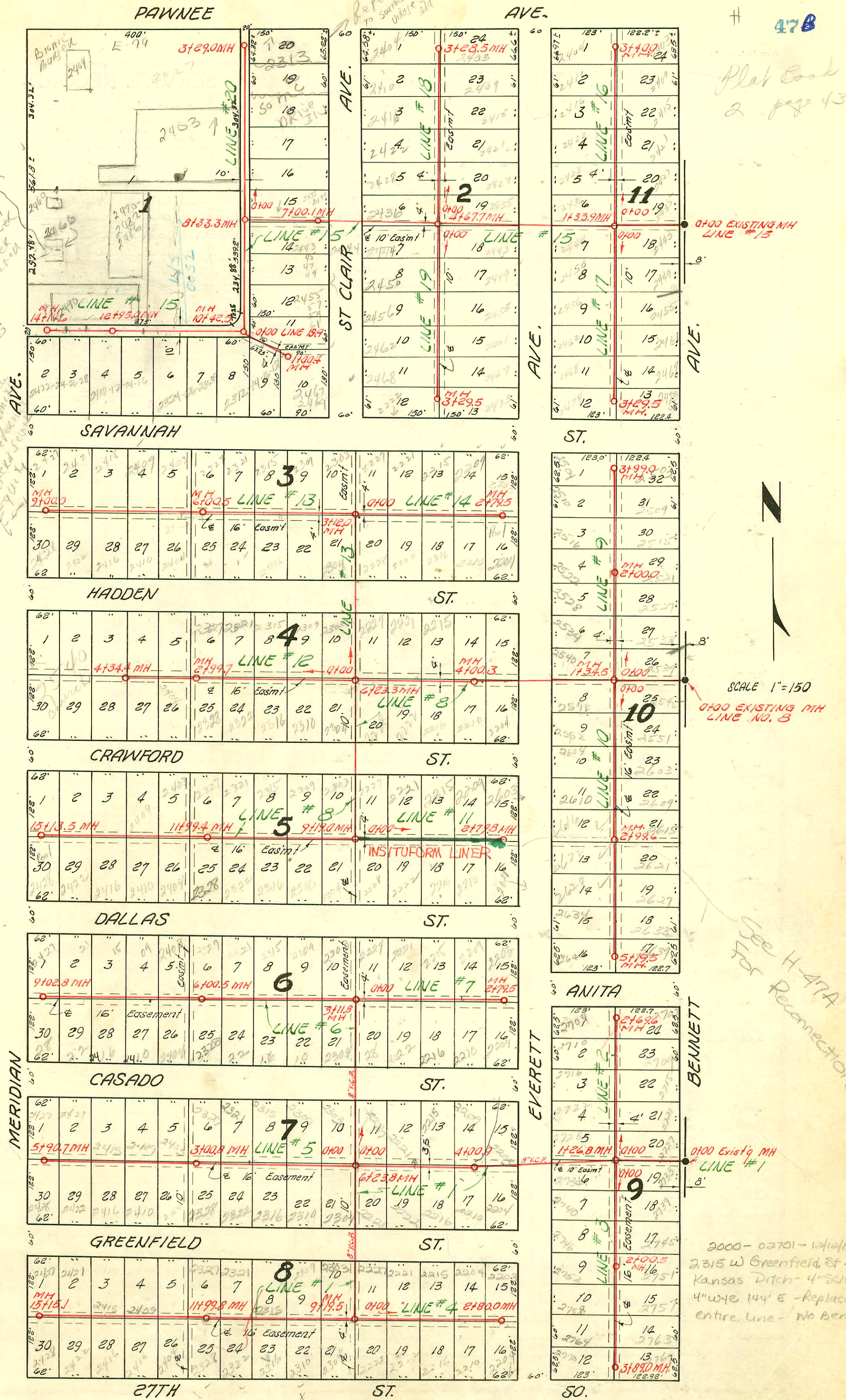


Plat Book
2 page 43

2/27/02
Don't connect
2466 S
Meridian
Mue 2 in Bldg
Final permit never
handed to water
sewer.

1. Dan Cappucci
to connect
2. Plan Review
3. Bldg Permit
4. Trade Permit
5. Lateral Sewer
E-79014

NOTE:
Construction record for this project
recorded on pages 47 to 51 inclusive.



SEWER RESPONSE PLAN - PHASE IA
 PROJ. NO. 468-82420
 BUILT BY INSITUFORM PLAINS, INC.
 BOOKED 10-11-95 FROM AS BUILTS

LAT. 3, SUB. 3, S. S. 22
 W. B. CARTER CONST. CO. INC., APRIL 25, 1955
 BK. NO. K-25, PROJ. NO. C25-7

See H-47A for
Reconnections

CONSTRUCTION RECORD

SERVICE RECORD

STATION	ELEVATION		Depth	MANHOLE	4-INCH "Y" BRANCHES		No. of Permit		House Number		DATE OF PERMITS			
	Ground	Grade			North West	South East	North West	South East	North West	South East	North West	South East	North West	South East
Line #5 0+0	101.3	92.42	8.9	0+00=10+60 in Line #1	0+19.1	0+16.0	#337	#4725	2313	2313	3-27-56	4-14-55		
1+0	100.8	92.62	8.2		0+83.6	0+80.6	#336	#4746	2312	2312	3-27-56	4-14-55		
2+0	100.9	92.82	8.1		1+43.0	1+40.0	#335	#4745	2302	2302	3-27-56	4-14-55		
3+0	101.1	93.02	8.1	2+50.4	2+65.5	2+62.5	#334	#4744	2301	2301	3-27-56	4-14-55		
4+0	101.3	93.22	8.1		3+24.6	3+21.6	#333	#4743	2274	2274	3-27-56	6-26-55		
5+0	101.4	93.42	8.0	5+00.4	3+85.2	3+82.2	#331	#4742	2267	2267	3-27-56	4-14-55		
6+0	101.7	93.62	8.1		4+36.0	4+33.0	#330	#4741	2262	2262	3-27-56	4-14-55		
7+0	101.7	93.82	7.9		4+95.9	4+92.9	#7451	#4740	2250	2250	2-21-56	4-14-55		
8+0	101.7	93.92	7.8	7+50.5	5+57.0	5+54.0	#7450	#4739	2250	2249	2-21-56	4-14-55		
9+0	101.8	94.22	7.6		6+15.6	6+12.6	#7449	#4738	2244	2243	2-21-56	4-14-55		
10+0	101.8	94.42	7.4		6+78.3	6+75.3	#7448	#4735	2238	2238	2-21-56	4-14-55		
11+0	101.7	93.82	7.9		7+39.5	7+36.5	#7447	#4723	2232	2232	2-21-56	4-14-55		
12+0	101.7	93.92	7.8	7+50.5	7+97.0	7+94.0	#7446	#4722	2226	2226	2-21-56	12-28-50		
13+0	101.7	94.02	7.7		8+55.4	8+52.4	#7445	#4727	2220	2219	2-21-56	4-14-55		
14+0	101.8	94.22	7.6		9+12.8	9+09.8	#7444	#4736	2214	2213	2-21-56	4-14-55		
15+0	101.8	94.42	7.4		9+77.0	9+74.0	#7443	#4728	2208	2208	2-21-56	4-14-55		
16+0	102.2	94.52	7.7	10+50.3	10+35.2	10+32.2	#7442	#4727	2202	2201	2-21-56	4-14-55		
Line #6 0+0	101.0	93.02	8.0	0+00=13+60 in Line #1	0+33.0	0+30.0	#4826	#4823	2320	2319	5-17-55	5-17-55		
1+0	100.8	93.22	7.6		0+93.5	0+90.5	#4827	#4824	2320	2319	5-17-55	5-17-55		
2+0	100.6	93.42	7.2		1+50.7	1+47.7	#4828	#4825	2320	2331	5-17-55	6-17-55		
3+0	100.6	93.45	7.2	2+14.2	2+05.8	2+02.8	#4829	#4826	2339	2337	5-17-55	5-17-55		
4+0	100.9	93.02	7.9	0+00=13+60 in Line #1	0+25.5	0+22.5	#4825	#4831	2314	2313	5-17-55	5-17-55		
5+0	100.8	93.22	7.6		0+80.5	0+77.5	#4824	#4831	2308	2307	5-17-55	5-17-55		
6+0	101.3	93.42	7.9		1+35.0	1+32.0	#4823	#4830	2302	2301	5-17-55	5-17-55		
7+0	101.4	93.54	7.9	2+61.0	2+56.5	2+66.5	#4837	#4864	2280	2279	5-17-55	5-17-55		
8+0	101.4	93.62	7.8		3+18.0	3+15.0	#4838	#4863	2274	2273	5-17-55	5-17-55		
9+0	101.7	93.82	7.9		3+78.5	3+75.5	#4839	#4862	2268	2267	5-17-55	5-17-55		
10+0	101.7	93.82	7.9		4+43.0	4+40.0	#4840	#4861	2262	2261	5-17-55	5-17-55		
11+0	102.0	94.02	8.0		4+97.6	4+97.6	#4841	#4860	2256	2255	5-17-55	5-17-55		
12+0	102.0	94.06	7.9	5+21.5	5+00.6	5+00.6	#4842	#4857	2250	2249	5-17-55	5-17-55		
13+0	102.0	94.22	7.8		5+61.0	5+58.0	#4843	#4858	2244	2243	5-17-55	5-17-55		
14+0	102.0	94.22	7.8		6+18.8	6+15.8	#4844	#4859	2238	2237	5-17-55	5-17-55		
15+0	102.4	94.42	8.0		6+79.8	6+76.8	#4845	#4858	2232	2231	5-17-55	5-17-55		
16+0	102.1	94.58	7.5	7+82.0	7+38.4	7+35.4	#4846	#4848	2226	2225	5-17-55	5-17-55		
17+0	102.1	94.62	7.5		8+00	7+97.0	#4847	#4847	2220	2219	5-17-55	5-17-55		

(Line #7 Continues on page 55.)

Rep- 2000-01665- 2267 S Glenn - Adios - Padgett Ex - 4" SCH 40, WYE Repair - 114.6' N of MH 2161 (3175)
ITWIN CO, 1922 - replaced entire line