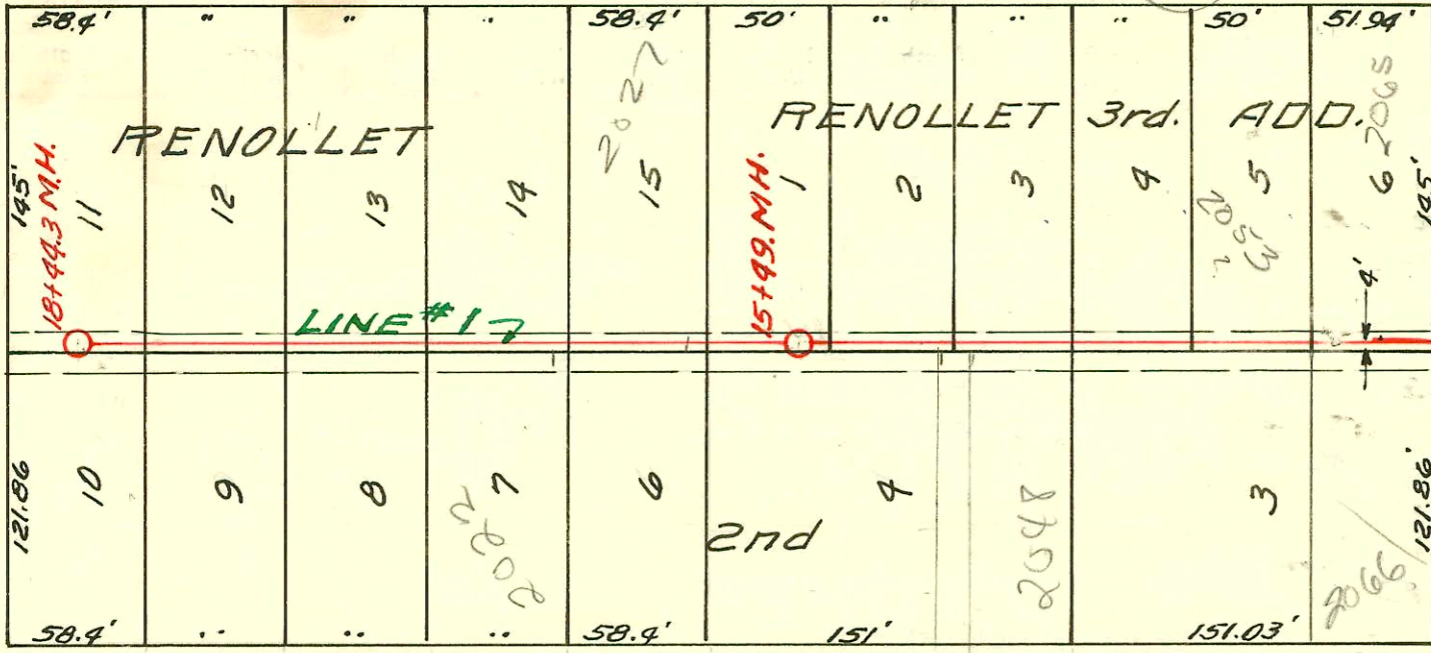
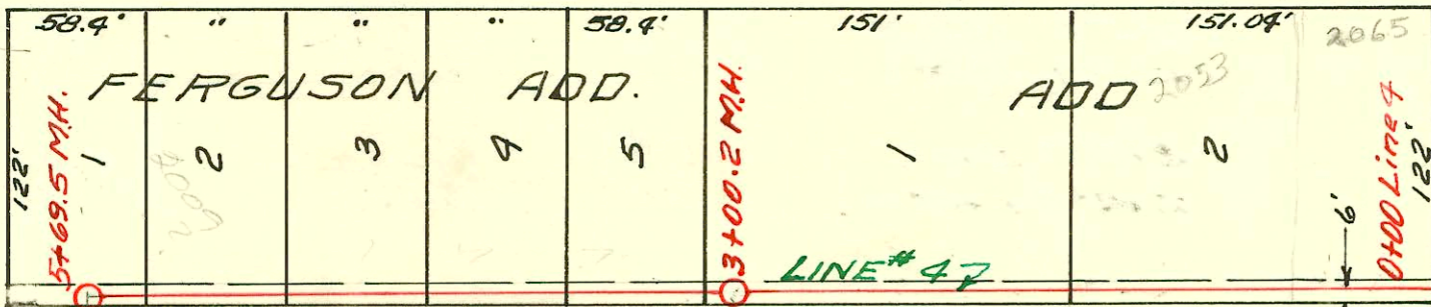


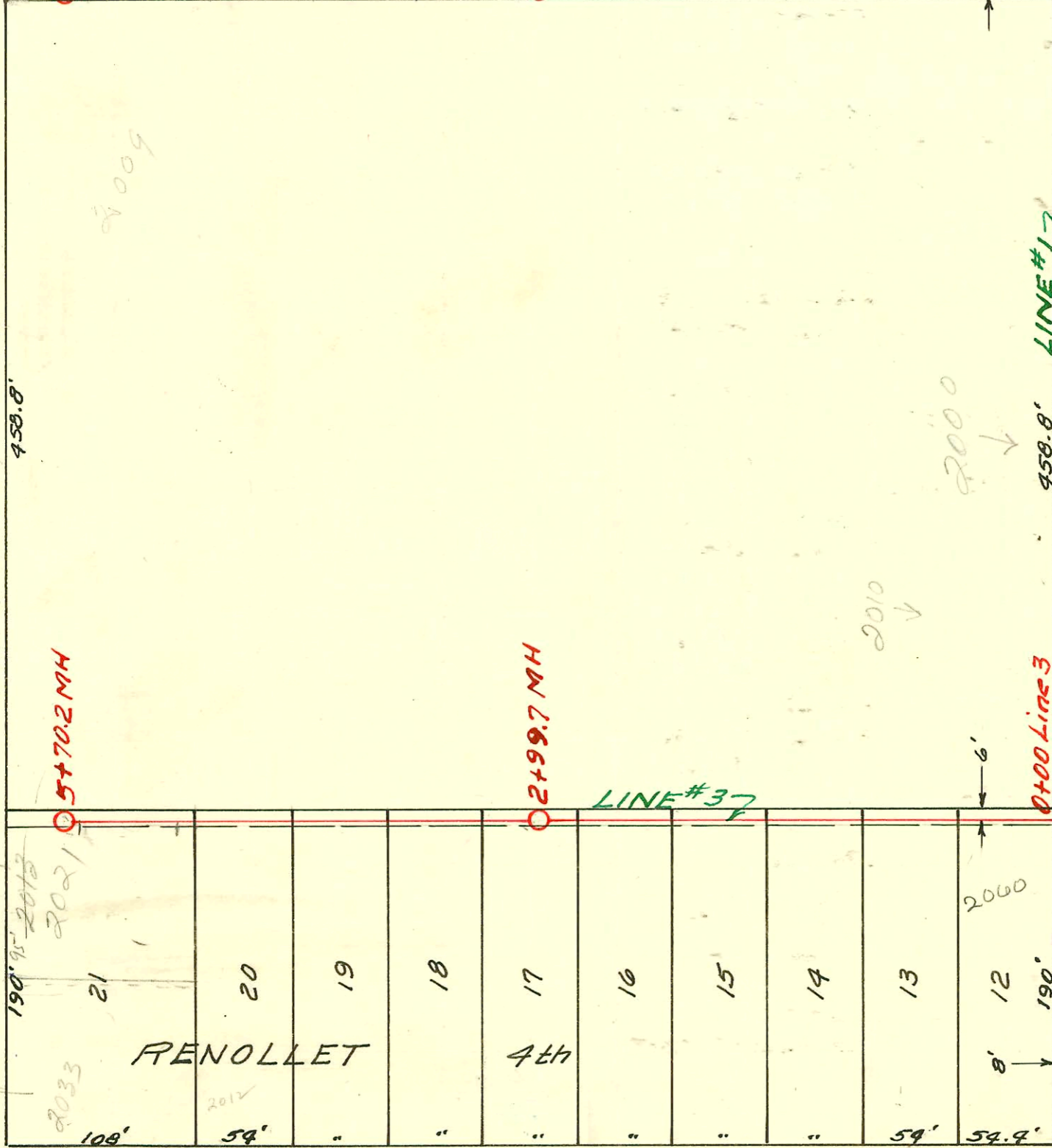
GLENN AVE.



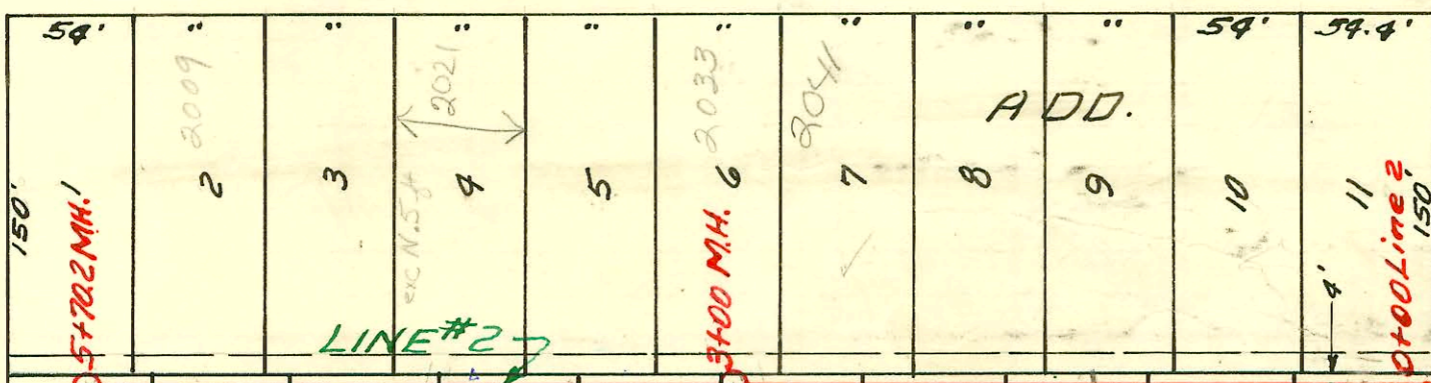
EUCLID AVE.



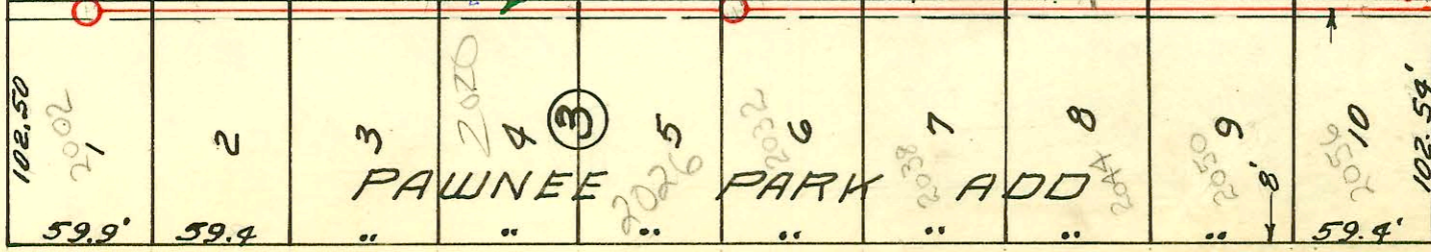
MAY AVE.



BONN AVE.



EVERETT AVE.



LAT. 10, SUB. 3, 55.22  
W.B. CARTER CONT. 6-7-55  
BK. NO. K-30 PROJ. NO. C25-18

Sub. 3-55.22

CONSTRUCTION RECORD

SERVICE RECORD

STATION	ELEVATION		Depth	MANHOLE	4-INCH "Y" BRANCHES		No. of Permit		House Number		DATE OF PERMITS	
	Ground	Grade			North West	South East	North West	South East	North West	South East	North West	South East
Line#1 0+0	102.4	95.10	7.3	Existg MH								
1+0	102.5	95.30	7.2									
	102.5	95.31	7.2	1+06.5								
2+0	102.4	95.50	6.9									
3+0	102.3	95.70	6.6									
4+0	102.0	95.90	6.1	4+00								
5+0	101.8	96.10	5.7									
	102.0	96.11	5.9	5+04.1								
6+0	102.0	96.30	5.7									
7+0	102.2	96.50	5.7									
8+0	102.2	96.70	5.5	8+00								
9+0	102.3	96.90	5.4									
	103.0	97.05	5.9	9+76								
10+0	102.2	97.10	5.1									
11+0	102.7	97.30	5.4									
12+0	102.8	97.50	5.3									
	102.8	97.75 in 97.65 out	5.1	12+72.3								
					12+94.7 ✓ 12+95.7 ✓	12+98.7 ✓	1565 #2068	#5574	2066 J Euclid	2066 J S Glenn	12-02-91 7-19-55	7-13-55
13+0	102.9	97.80	5.1									
					13+49.8	13+46.8	#6827	#5140	2066 J Euclid	2057 J Glenn	11-1-55	6-23-55
					13+92	13+82	#5142	#5575	2054 J Euclid	2053 J Glenn	6-23-55	7-13-55
14+0	103.0	98.00	5.0									
					14+04.3							
					14+51.6	14+48.6	4" SCH 40 2001-00010 #6825	6784 #5139	see below 2047 J Euclid	2047 J Glenn	1-3-01 11-1-55	10-14-52 6-23-55
15+0	103.5	98.20	5.3									
						15+01.5		#5622	2036 J Euclid	2036 J Glenn		7-14-55
					15+41.5	15+44.5	#5667	#5138	2036 J Euclid	2036 J Glenn	7-19-55	6-23-55
	103.3	98.30	5.0	15+49								
					15+93.2	15+96.2	4" SCH 40 1013	#5126	2027 J Euclid	2027 J Glenn	see below 6-6-56	9-22-50 6-23-55
16+0	103.2	98.40	4.8									
					16+49.7	16+52.7	4" SCH 40 PVC 94232187 1012	#5125	2027 J Euclid	2027 J Glenn	9-2-93 6-6-56	6-23-55
17+0	103.6	98.60	5.0									
					17+08.3	17+11.3	1011	12398 #497	2016 J Euclid	2016 J Glenn	6-6-56	10-24-54 6-23-55
					17+71.8	17+74.8	#497	#5123	2016 J Euclid	2016 J Glenn	11-12-52	10-29-54 6-23-55
18+0	103.6	98.80	4.8									
					18+30.2	18+33.2	#496	#5122	2004 J Euclid	2004 J Glenn	4-12-56	10-29-54 6-23-55
	103.6	98.89	4.7	18+44.3								
Line#2 0+0	102.5	95.50	7.0	Existg M.H.								
					0+42.1	0+30	#5140		2056 J Euclid	2056 J Glenn	6-8-55	
					0+92.2	0+89.6	#5144	#3339	2050 J Euclid	2059 J Bow	6-8-55	12-14-56
1+0	102.5	95.70	6.8									
					1+51.0	1+31.8	4" SCH 40 94178367 5145	#5247	2018 J Euclid	2018 J Glenn	10-31-94 6-8-55	7-11-51
						1+92.5						
2+0	102.5	95.90	6.6									
					2+19.7		#5146		2038 J Euclid	2038 J Glenn	6-8-55	
					2+69.5	2+45.3	4" SCH 40 - eo 2+88	#5247 #5892	2032 J Euclid	2032 J Bow	6-8-55	7-11-55 5-29-51 12-23-57
3+0	102.9	96.10	6.8	3+00								
					3+40.3	3+55.4	#5148	#5247	2028 J Euclid	2028 J Bow	10-13-78 6-8-55	7-11-55
					3+87.5		#5147		2028 J Euclid	2028 J Bow	6-8-55	
4+0	102.9	96.30	6.6									
						4+08.5		469	2011 J Euclid	2011 J Glenn		4-5-57
					4+47	4+57.6	#5150	#5546	2011 J Euclid	2011 J Glenn	6-8-55	7-11-55
5+0	102.8	96.50	6.3									
					5+06.8	5+10.3	#5151	#5891	2008 J Euclid	2009 J Bow	6-8-55	12-23-57
					5+60.5	5+57.5	#5152	#5545	2008 J Euclid	2008 J Bow	6-8-55	7-11-55
	102.9	96.64	6.3	5+70.2		5+31.2		#52551	2019 May			11-21-75
Line#3 0+0	102.0	96.30	5.7	Existg M.H.								
					0+20.4	0+23.4	2006-00746 #6921		2060 J Euclid	2060 J Bow	3-17-00 11-13-55	
					0+73				2054 J Euclid	2054 J Bow	11-7-55	
1+0	101.9	96.50	5.4									
					1+29.6	1+32.6	731 #6920		2047 J Euclid	2047 J Bow	7-11-80	
					1+82.4		#6919		2047 J Euclid	2047 J Bow	11-15-55	
2+0	101.6	96.70	4.9									
					2+36.5	2+39.5	17320 #6918		2056 J Euclid	2056 J Bow	11-19-86 11-15-55	
					2+88.6		#6917		2056 J Euclid	2056 J Bow	11-15-55	
	101.8	96.90	4.9	2+99.7								

Line#3 Continues on page 67

\*5550-265 So. Bonn. Top - Smith plge 10-555 R (0124)  
 3339 2047 Bonn Top Smith plge 12-14-56  
 22980 Top 2000 Jennell - Bradford lines 3-12-55 (top 7+13)  
 2000-02101- 9/22/00- 2027 S Glenn - ATPLbg- 4" SCH 40 Connected garage sewer into house swr - ITWIN CO, 1V45, 1H45  
 2001-00010- 1/3/01- 2048 S Euclid- Kansas Ditch- 4" SCH 40- Repl all but lower 1 1/2' of sewer - ITWIN CO - No Bands