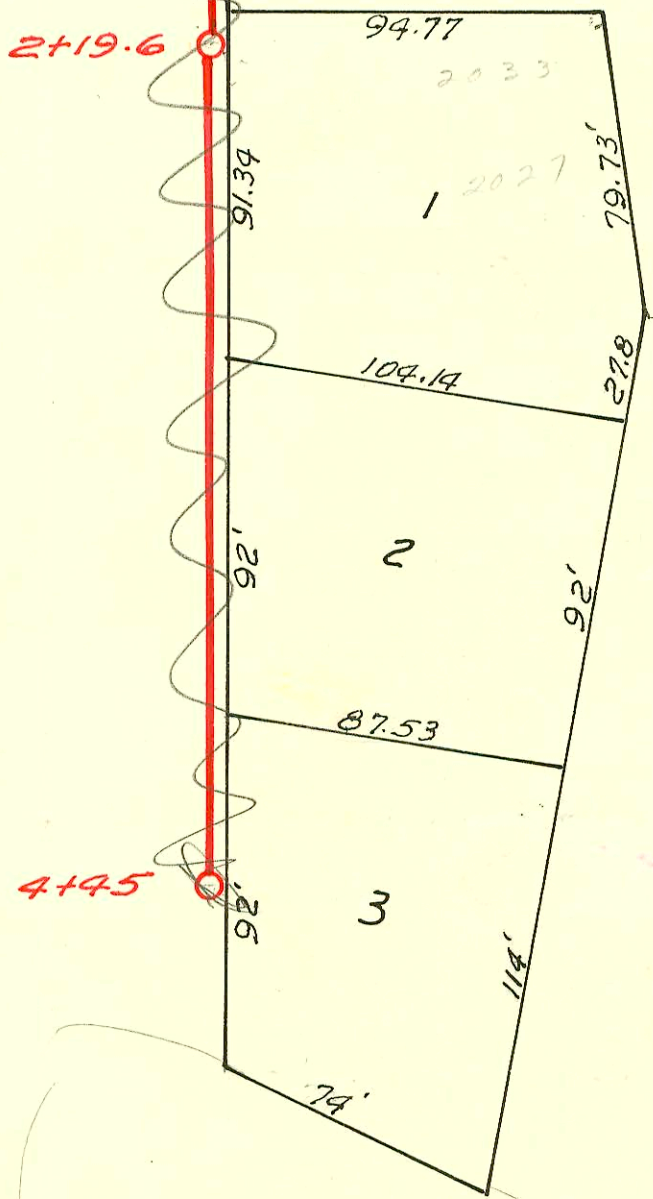


0+00 Existing M.H.

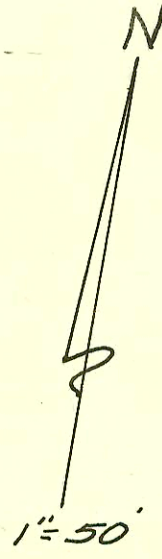
Existing line 2" E128,  
20th. ST. Extended

REPLAT OF PART  
RESERVE A, STRODES ADD.



Do Not Issue New  
Comation Permits.  
To this line. It was  
cut off from City sewer  
when canal route was  
in. per Ardan Busby.  
Sewer Maint  
4/24/01

PART OF DIST. U - 55.12  
PRIVATE CONTRACT  
O&F CONST. CO. 6-15-55



Indiana St

Res. A

See Arcview

CONSTRUCTION RECORD

SERVICE RECORD

Line #3

Line #4

STATION	ELEVATION		Depth	MANHOLE	4-INCH "Y" BRANCHES		No. of Permit		House Number		DATE OF PERMITS	
	Ground	Grade			North West	South East	North West	South East	North West	South East	North West	South East
3+0	101.8	96.90	4.9		3+42 3+99.5	3+45	#6716 #5272		2024 Bonn 2018 Bonn			11-15-55 6-21-55
4+0	101.8	97.10	4.7		4+67.2 4+62.3	4+02.5 4+65	#64248	20125 Bonn				12-2-77
5+00	102.2	97.30	4.9		5+03 5+58.4	5+00 5+61.4	#205 12573	2025 Mann 2021 Mann				3-13-56 5-9-60
	102.4	97.44	5.0	5+70.2								
0+0	103.0	97.20	5.8		0+22.7 0+76	0+19.7 0+73	#5140 #6830		20654 Bonn 20573 Bonn			6-23-55 11-1-55
1+0	102.5	97.40	5.1		1+27.8 1+77.4	1+24.8 1+74.4	#27013 #27089 #2664		21534 Bonn 20974 Bonn			2-6-91 11-7-55 2-15-91 7-17-55
2+0	102.4	97.60	4.8		2+28.7 2+83.8	2+25.7 2+80.8	#6828 #5665		204 Bonn 2023 Bonn			11-1-55 7-19-55
3+0	102.5	97.80	4.7	3+00.2	3+40 3+94	3+37 3+91	#250		200 Bonn			3-16-56
4+0	102.5	98.00	4.5		4+57.7	4+54.7	#4212 #251		2015 Bonn			9-29-81 3-16-56
5+0	102.9	98.20	4.7		5+12 5+64	5+09 5+61	#6874		2003 Bonn			11-8-55
	102.5	98.34	4.2	5+69.5								
				Dist. U	S.S. 12 East							
0+0	119.2	117.73	1.5									
1+0	119.4	117.83	1.6									
2+0	121.9	117.93	4.0									
	122.3	117.95	4.4	2+19.6		2+27 2+75			2033 Indiana 2027 Indiana			
3+0	122.4	118.03	4.4			3+16 3+65	#2183 #2184 #2185		2021 Indiana 2015 Indiana			3-10-67 8-8-55 3-10-67
4+0	122.5	118.13	4.4			4+12 4+38	#2180 #2156 #2151 #2152		2028 Indiana 2037 Indiana			3-10-67 8-8-55 3-10-67 8-8-55
	122.4	118.18	4.2	4+45								

Top C52551 - 2019 May - 11-21-75  
 #2959 - top - 2027 Indiana - Reynolds pty. Co. 8-8-55 } C 2184 - Seal off - Georges Pkwy 3-10-67  
 #2960 - top - 2033 Indiana - Reynolds pty. Co. 8-8-55 } C 2185 - Seal off - Georges Pkwy 3-10-67  
 #6875 - top - 2009 f. build - Nelson + Henley - 11-8-55 - Harold Thompson 12-16-51  
 #249 - top - 2027 f. build - Trubell + Henley - 3-16-56  
 3337 Top 2012 f. Bonn Smith Pkwy 12-14-56