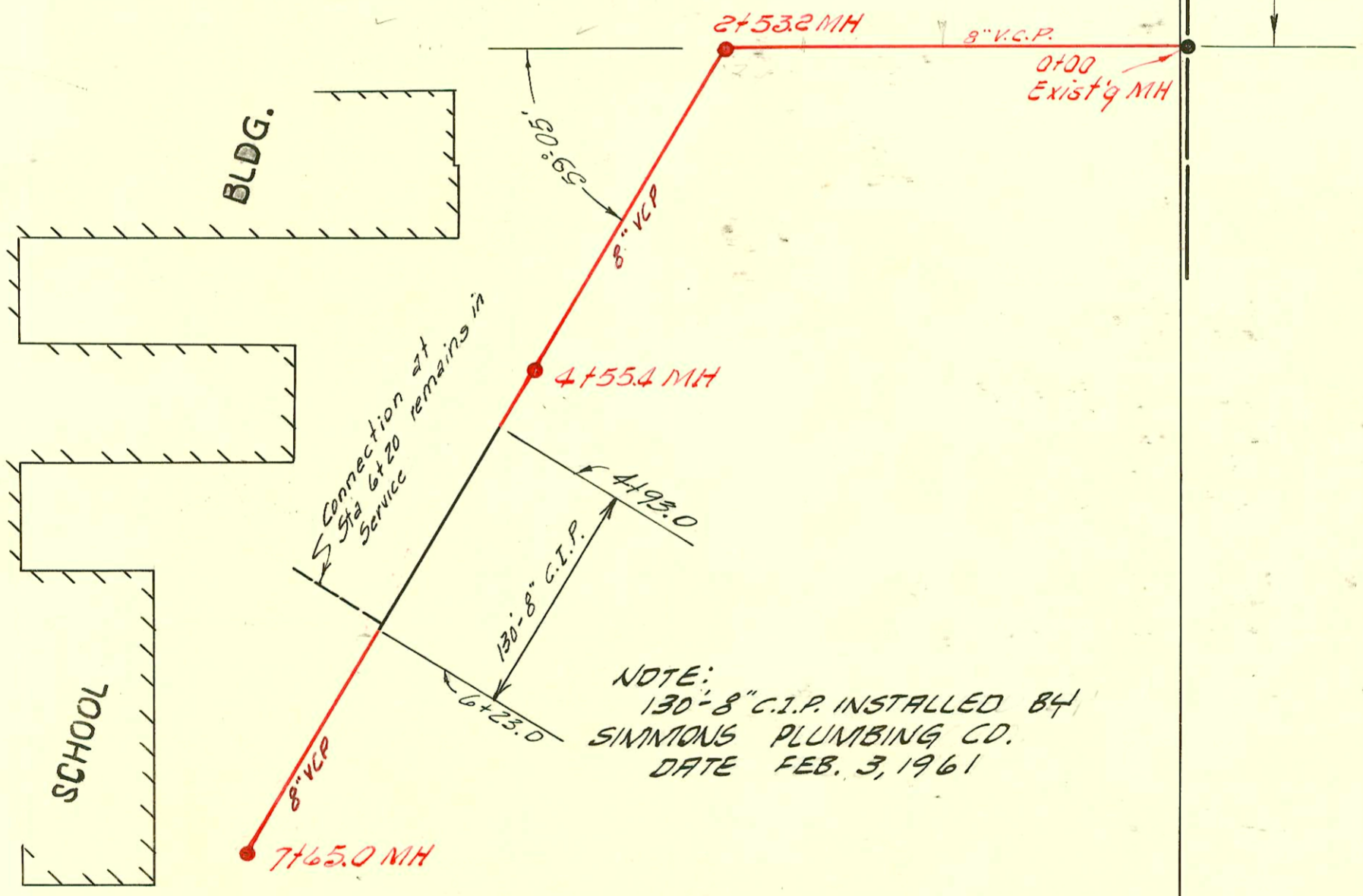


PRIVATE JOB
 W. B. CARTER CONSTR. CO.
 PAWNEE & GLENN (GRADE SCHOOL)
 AUG. 27, 1957



General (School)
 # 13801 points line center 2414 S. Glenn Simmons Plbg. 1-23-61 (6+25) work up
 13802
 13803
 14290 Tap 2464 S. Glenn (Crawford School) Simmons Plbg. 6-13-61 (2+93.1)
 16564 Seal off - 2414 S. Glenn (portable school) 1-10-63 - Brodie Plbg

CONSTRUCTION RECORD

SERVICE RECORD

Line # 4

STATION	ELEVATION		Depth	MANHOLE	4-INCH "Y" BRANCHES		No. of Permit		House Number		DATE OF PERMITS	
	Ground	Grade			North West	South East	North West	South East	North West	South East	North West	South East
0+0	87.0	86.10	0.9	0+00 = 4+610 in Line #2								
					0+92.5	0+55.0	5886	41061	1939	1942	12-20-57	12-15-55
1+0	88.5	86.30	2.2		1+54.0	1+21.0	5755	5342	1935	1938	11-25-57	9-23-57
					2+25.5	1+85.0	5920	6977	1932	1932	12-23-57	5-19-57
2+0	87.7	86.50	1.2		2+95.0	2+51.5	6367	1921	1927	3-20-58		
				2+99.8								
3+0	92.5	86.70	5.8		3+65.0	3+15.0	5122	8791	1915	1920	8-20-57	12-2-58
					4+35.0	3+81.0	5860	6976	1909	1914	12-13-57	5-19-58
4+0	91.7	86.90	4.8		4+45.7	4+45.7	5789				12-2-57	
					5+05.0	5+11.0	4757	9393	1903	1902	7-2-57	2-25-58
6+0	96.1	87.24 out 87.34 in	8.9 8.3	5+74.0								
					6+43.0	6+43.0	15883	17292, 166, 116, 156, 24	2536 SE	1812	11-13-56	7-11-62
7+0	97.1	87.76 out 87.86 in	9.3 9.2	7+30.0	(2-4 Stubs S.W) WEST EAST	7+78.5 7+81.5			1909	1912	11-13-56	7-30-56
8+0	97.2	88.00	9.2			8+17.5 8+89.5						
9+0	96.6 96.7	88.20 88.24	8.4 8.5	9+18.6	WEST							

Line # 5

0+0	94.4	85.70	8.7	0+00 = 1+232 in Line #1								
1+0	94.5	86.10	8.4									
2+0	94.7 95.2	86.50 86.90	8.2 8.3	2+99.5								
3+0												
4+0	94.6	87.30	7.3									
5+0	96.0 97.4	87.70 87.86	8.3 9.5	5+38.7	5+00.0 (4" stub N)		5325		1909		6-24-55	

Line # 6

0+0	92.4	88.80	3.6	0+00 Exist'g MH	NORTH SOUTH	0+28.0 0+91.5	8891 5887		1813		12-29-58 12-20-57	
					Y West							
0+0	99.8	91.90	7.9	0+00 Exist'g MH								
1+0	99.6	92.00	7.6									
2+0	99.6 99.5	92.10 92.15 out 92.25 in	7.5 7.4 7.3	2+53.2								
3+0	99.7	92.30	7.4									
						3+53.0						
4+0	99.6	92.40	7.2									
						4+55.4						
5+0	100.3	92.50	7.8									
6+0	98.9	92.60	6.3									
						6+11.0						
7+0	99.3 99.9	92.70 92.77	6.6 7.1	7+65.0								

B. W. Truesdell Inter. School S. S.

16055
 910H 5045 - top - 2414-46 - further
 # 5131 - 2410 S. GLEN - E. Brodie - 23-8-57 Woodman School
 5288
 5289
 5291
 5772 Top 2568d - 2414-46 - further
 11225 6th & Wye 2414-46 - further
 7-30-84
 7-5-55 (32.5' W of MH)
 7-18-57
 11-27-57
 8-14-59 426' W of M.H. of Pawnee