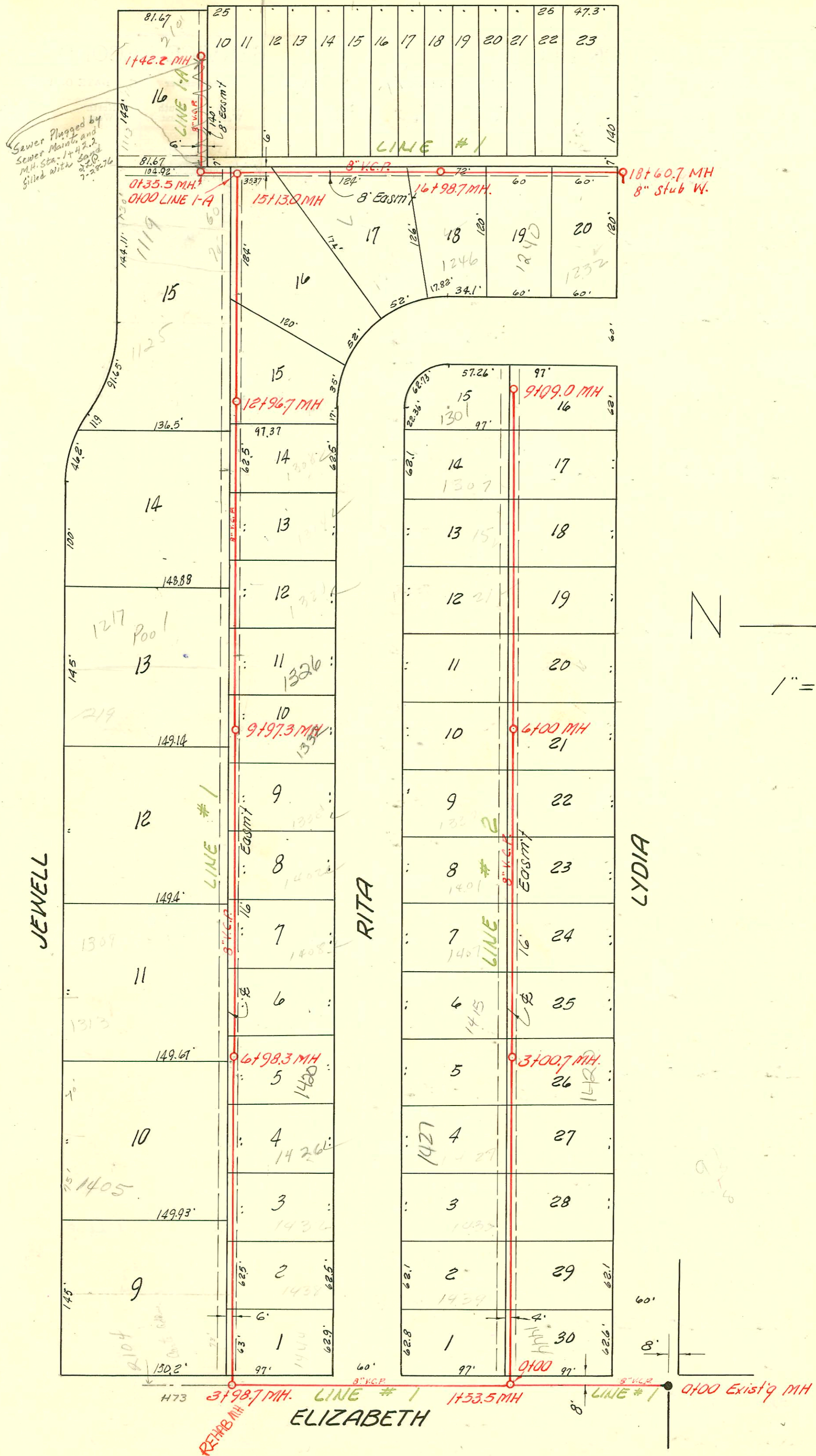


SENECA

H 74A



LAT. 15, SUB. 2, S. S. 22  
 BUILDERS CONST. INC., JULY 12, 1955  
 BK. NO. K-31, PROJ. NO. C25-35

CONSTRUCTION RECORD

SERVICE RECORD

STATION	ELEVATION		Depth	MANHOLE	4-INCH "Y" BRANCHES		No. of Permit		House Number		DATE OF PERMITS	
	Ground	Grade			North West	South East	North West	South East	North West	South East	North West	South East
0+0		93.00		0+00 Existg MH								
0+0.30	Begin	8" V.C.P.										
1+0	100.9	93.20	7.7		1+42.5			16191	1444 Lydia			4-29-86
	100.3	93.31	7.0	1+53.5								
2+0	100.2	93.40	6.8									
3+0	100.7	93.60	7.1									
	100.3	93.90 in 93.80 out	6.4 6.5	3+98.7								
4+0												
5+0	102.1	94.10	8.0		4+25.0 4+47.3 5+04.4 5+07.4 5+23.0 5+91.8	4+22.0		22864 #5978 #6062 #6061 #5608	1444 Rita 1438 Rita 1405 Jewell			7-26-55 4-27-67 9-13-55 9-13-55 11-6-57
6+0	101.2	94.30	6.9			6+31.8		96-147337 #6360	1426 Rita			9-6-96 9-13-55
					6+65.3	6+89.8		#5779 #7544	1317 Jewell 1420 Rita			8-11-55 7-26-55
7+0	101.4	94.50	6.9	6+98.3	7+14.4 7+35.2			223126 #17469	1313 Jewell 1309 Jewell			3-5-71 8-2-63
8+0	102.5	94.70	7.8			8+08.3		#7545	1414 Rita			7-26-55
						8+20.0		#6359 #6358	1408 Rita 1402 Rita			9-13-55 9-13-55
9+0	102.9	94.90	8.0			8+74.6		8884	1225 Jewell	1338 Jewell		5/23/56 9-13-55
	103.9	95.10	8.8	9+97.3	9+46.4	9+49.4						
10+0						10+04.0		#7546	1332 Rita			7-26-55
						10+24.0		7056	1011 Jewell	1326 B Rita		5/29/58 1-23-89 B
						10+66.4		22459	1217 Jewell			6-24-57
11+0	103.8	95.30	8.5			10+90.5		#4816				
						11+31.2		#6356	1320 Rita			9-13-55
						11+60.5		#6355	1314 Rita			9-13-55
12+0	103.2	95.50	7.7			12+28.0		#5676	1307 Jewell			7-26-55
						12+55.5		#6354	1307 Rita			9-13-55
13+0	103.8	95.70	8.1	12+96.7								
						13+15.2		#5748	1302 Rita			7-26-55
						13+53.0		#5748	1302 Rita			7-26-55
14+0	103.7	95.90	7.8			14+00.5		2004-001003 8960 B101	1252 Rita 111940 Jewell 1115 Jewell			3-3-00 12-29-58 3-9-64 7-26-55
						14+46.7						
						14+87.8						
15+0	103.8	96.10	7.7			15+130	Y West	336438 #6903 #5701	1115 Jewell			12-23-70 11-15-55 8-10-55
	103.9	96.24	7.7			15+29.0	Y East					
						15+77.0						
16+0	103.7	96.40	7.3			16+38.4		#21104 #5750	1252 B Rita	2113 Jewell		7-19-88 7-26-55 1-9-56
	103.6	96.60	7.0	16+98.7								
17+0						17+100		4" SDR 35 #6353	1246 Rita			11-12-93 7-13-55
						17+25.0		#30217 #5970 #5751	1240 R Rita			12-6-93 7-26-55
18+0	103.1	96.80	6.3			17+67.6						
						17+64.6						
						18+27.2		#6352	1232 Rita	2187 S. Jewell		9-13-55 9-17-56
	103.2	96.94	6.3	18+60.7								
Line 1-A 0+0	103.9	96.30	7.6	0+00 = 15+13.0 in Line #1 0+35.5	Y North	0+50.2 0+73.6		#5708	1113 Jewell			7-22-55
1+0	103.5	96.80	6.7			1+30.5		SO 42877	2101 S. Jewell			12-27-73
	102.9	96.96	5.9	1+42.2								

C57239 - Harold Shumper 8-16-76 2107 S. Jewell (15448-8)

Line # 2 booked on page 75