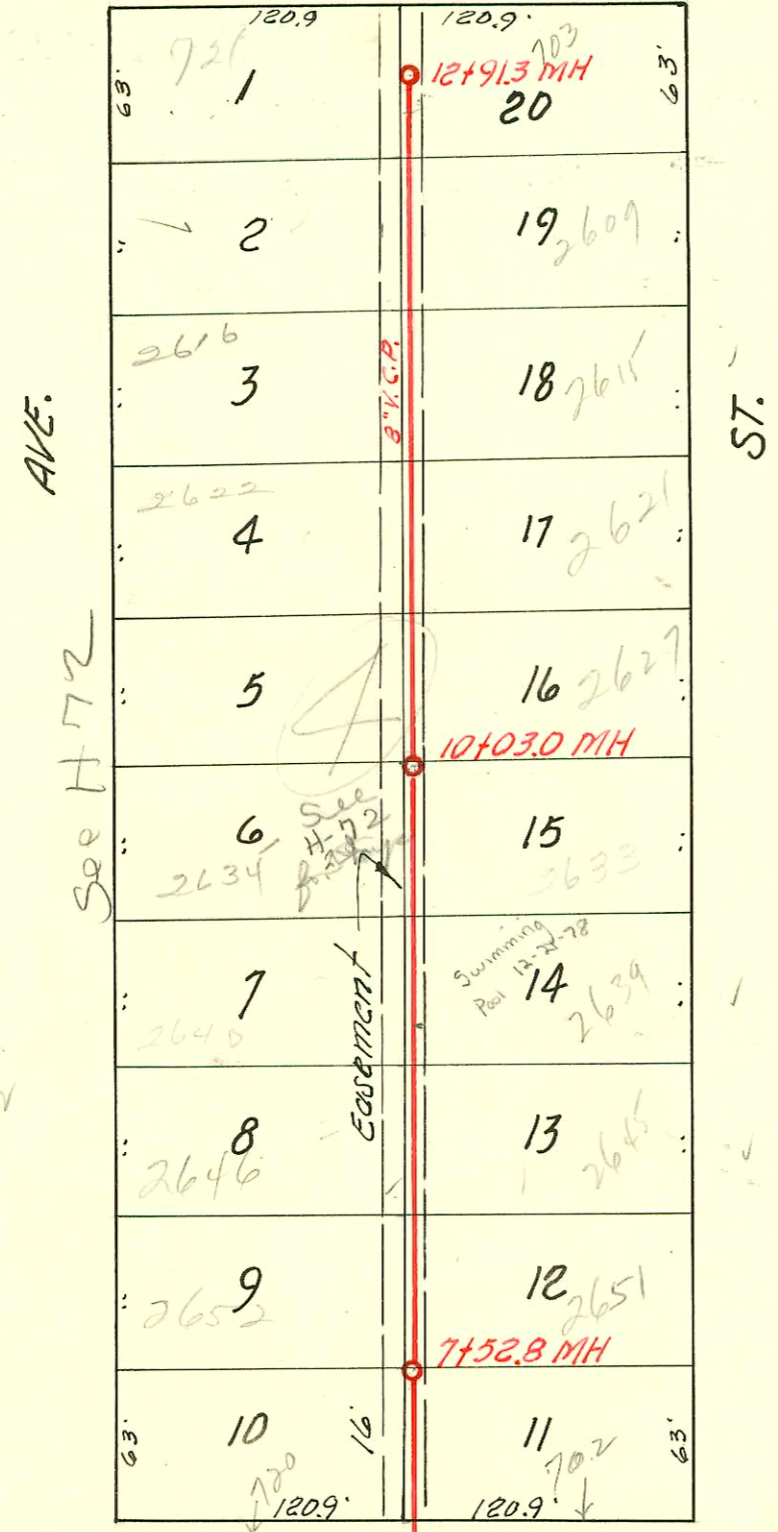


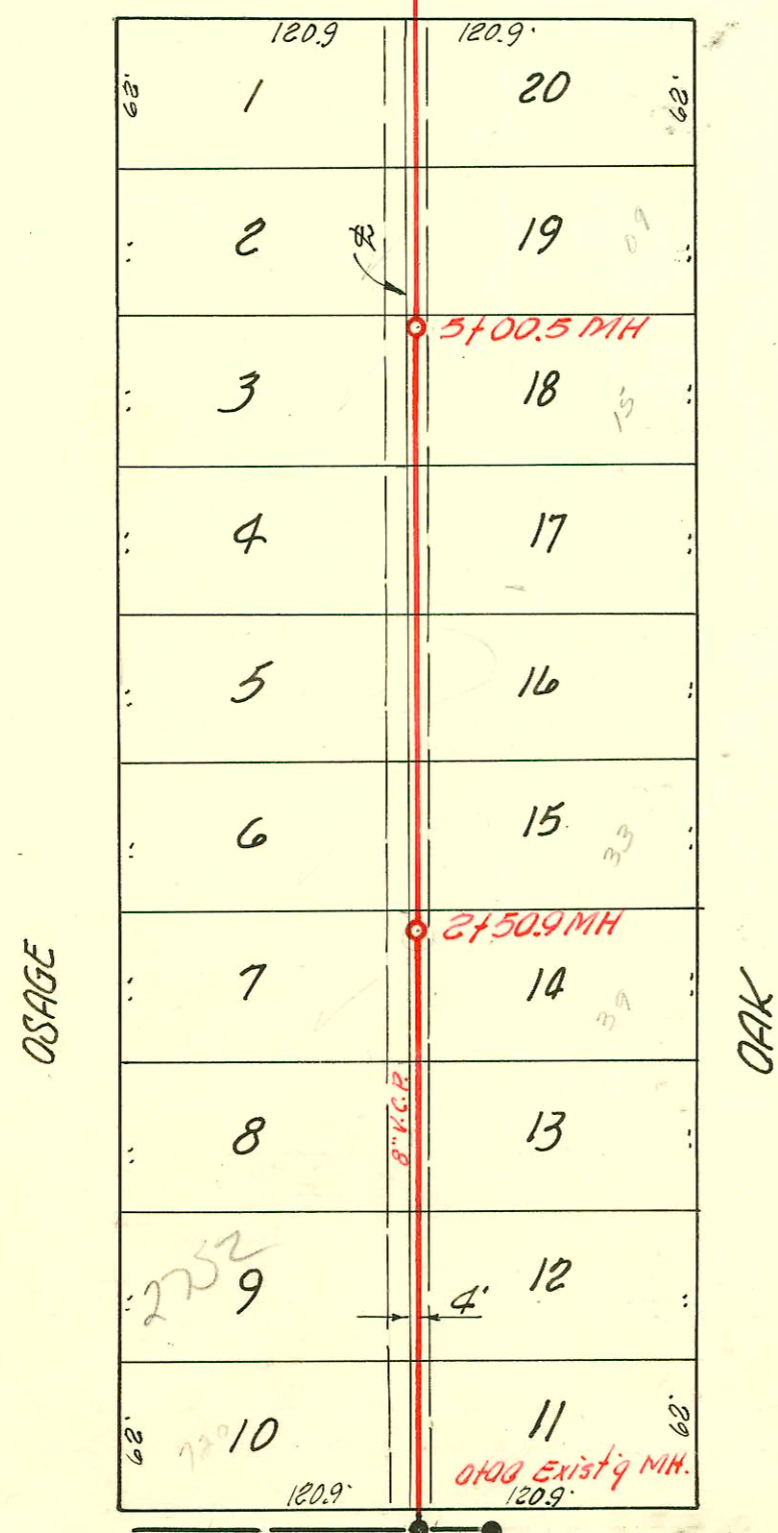
25TH ST. SO.



N

1" = 80'

26TH ST. SO.



OAK

27TH ST. SO.

LAT. I, SUB. 4, S. S. 22

BUILDERS CONST. INC., JULY 19, 1955

BK. NO. K-23, PROJ. NO. C25-32

CONSTRUCTION RECORD

SERVICE RECORD

Line #3

Line #4

STATION	ELEVATION		Depth	MANHOLE	4-INCH "Y" BRANCHES		No. of Permit		House Number		DATE OF PERMITS	
	Ground	Grade			North West	South East	North West	South East	North West	South East	North West	South East
0+0	100.3	96.55	3.7	0+00=8+200 in Line #2	0+22.3	0+19.3			2475	Walnut		
					0+83.0	0+80.0			13722	Walnut		2-10-56
1+0	100.2	96.64	3.6						4127			3-22-57
2+0	100.2	96.74	3.5		1+55.6	1+52.6			2461	Walnut		
					2+23.5	2+26.5			2455 S.	WALNUT		7-10-69
	99.4	96.79	2.6	2+50.3								
3+0	99.9	96.84	3.1		2+71.2				2451 S.	Walnut		6-10-70
					2+85.7				2445 S.	Walnut		5-8-73
					3+25.7							
					3+48.0							
4+0	100.5	96.94	3.6		3+78.5	3+75.5	15145	#7337	2424 S.	Walnut	2-1-62	2-7-57
					4+34.0	4+31.0			2420 S.	Seneca		4-17-70
					4+82.4	4+79.4						
5+0	100.8	97.04	3.8	5+00.5								
					5+34.5	5+31.5			2422 S.			4-15-57
					5+89.4	5+86.4			1627 W.	Seneca		3-3-64
6+0	100.9	97.14	3.8									
					6+41.1	6+38.1			2403	Walnut		7-11-56
					6+86.8	6+83.8						
	100.9	97.23	3.7	6+90.7								
0+0	101.4	96.01	5.4	0+00=8+73.5 in Line #1	0+62.5							
1+0	102.1	96.20	5.9		1+14.0	1+11.0			C37114	1915	Javannah	2-8-73
					1+63.7							
2+0	101.8	96.40	5.4		2+21.1							
	101.2	96.46	4.7	2+31.0								
0+0	100.6	91.00	9.6	0+00 Existg MH	West	East						
0+03.0	Req. Project											
					0+30.5	0+27.5	#7121	6364	720 W. B.	2740		1-21-92
					0+91.0	0+88.0	#6185	#6186	2752 S.	2740		11-15-57
1+0	100.2	91.30	8.9									
					1+47.5	1+44.5	#6184	#6187	2746 S.	2745 S.		8-30-55
2+0	97.8	91.60	6.2		2+23.0	2+20.0	#2719	3832	2740 S.	2739 S.		2-15-57
	97.7	91.75	6.0	2+50.9								
					2+83.0	2+80.0	#2718	3833	2734 S.	2733 S.		2-15-57
3+0	97.9	91.90	6.0		3+35.2	3+32.2	#6183	6188	2732 S.	2731 S.		8-30-55
					3+99.3	3+96.3	#6182	6189	2732 S.	2731 S.		8-30-55
4+0	98.2	92.20	6.0		4+69.0	4+66.0	#2717	3830	2714 S.	2713 S.		2-15-57
5+0	99.3	92.50	6.8	5+00.5								
					5+29.0	5+26.0	#2716	3831	2714 S.	2709 S.		2-15-57
					5+68.5	5+65.5	6180	6181	2714 S.	2709 S.		8-30-55
6+0	99.7	92.80	6.9									
7+0	99.8	93.10	6.7		7+09.3	7+06.3	#14707	#14159	720 W.	702 S.		9-20-61
	99.8	92.25	7.6	7+52.8								
					7+73.0	7+70.0	15347	15348	2652 S.	2651 S.		3-26-62
8+0	99.8	93.40	6.4		8+34.1	8+31.1	14140	16554	2646 S.	2645 S.		3-26-62
					8+98.5	8+95.5	15515	16553	2646 S.	2645 S.		5-1-61
					9+61.3	9+58.3	13641	17183	2639 S.	2638 S.		1-9-62
9+0	99.6	93.70	5.9									
10+0	99.4	94.00	5.4	10+03.0								
					10+22.7	10+19.7	#15299	16295	2628 S.	2627 S.		3-15-62
					10+89.0	10+86.0	15999	16297	2628 S.	2627 S.		10-27-62
11+0	99.5	94.30	5.2		11+50.3	11+47.3	#15640	15554	2616 S.	2615 S.		8-9-62
12+0	99.1	94.60	4.5		12+11.4	12+08.4	#14560	15330	2610 S.	2609 S.		5-17-62
					12+74.5	12+73.5	15553		2610 S.	2609 S.		4-27-62
	99.2	94.87	4.3	12+91.3								

CAT. 1, SUB. 4, S. S. No 22

#7031-THP-2413 2 Walnut - Smith p.lly. Co. - 12-12-55
 #7032-THP-2421 2 Walnut - Smith p.lly. Co. - 12-12-55
 #7033-THP-2427 2 Walnut - Smith p.lly. Co. - 12-12-55
 #7034-THP-2433 2 Walnut - Smith p.lly. Co. - 12-12-55
 #3077-Set 6 on 8" wye. 2514 S. Seneca - 11-19-56 - Jack Newham S.lly.