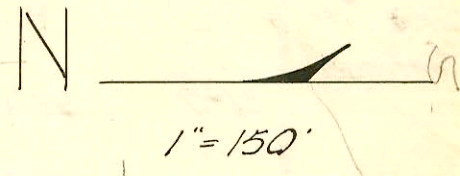
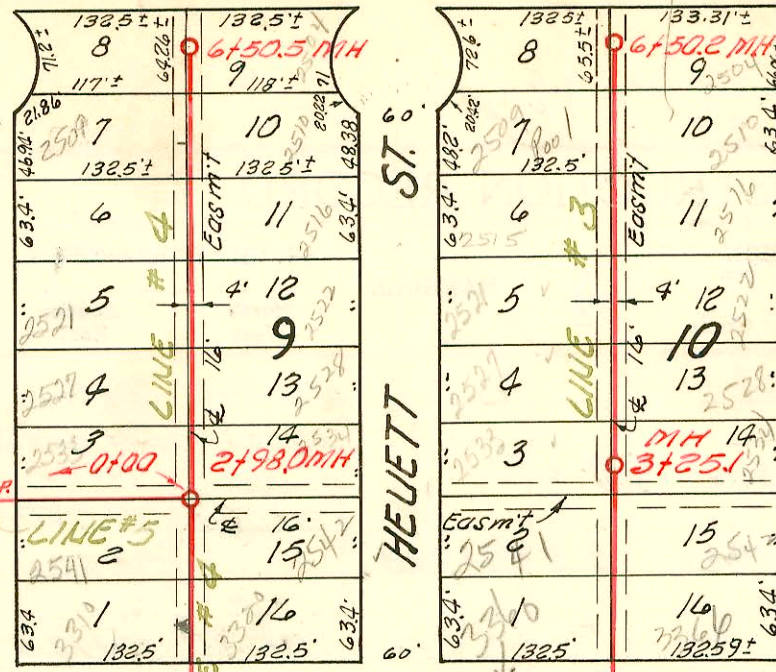
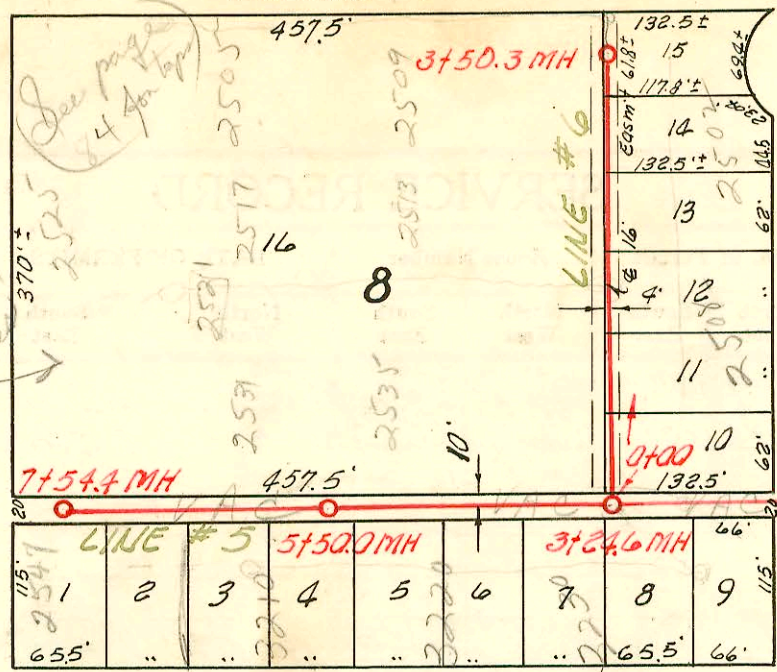


MERIDIAN

AVE.

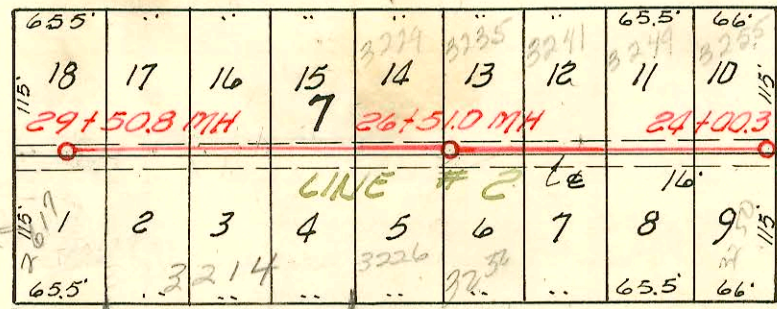
82 A



SO.

RICHMOND

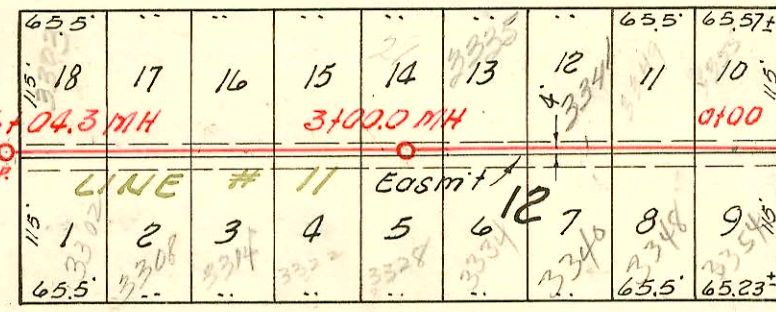
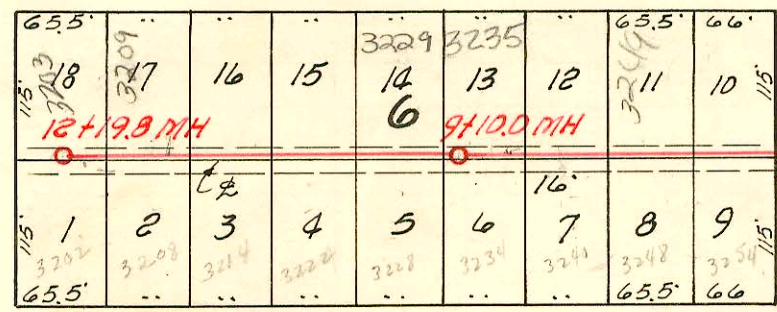
AVE.



SO.

EDWARDS

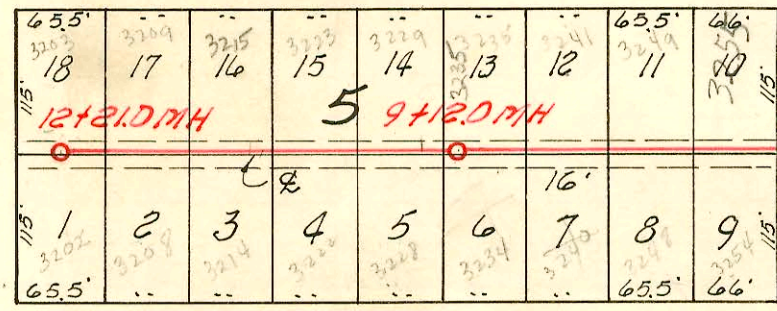
AVE.



ST.

GORDON

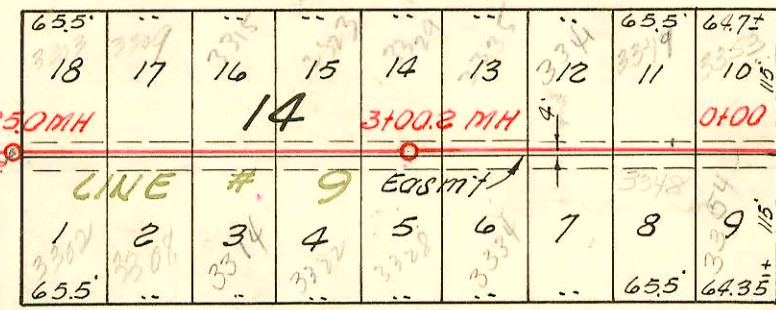
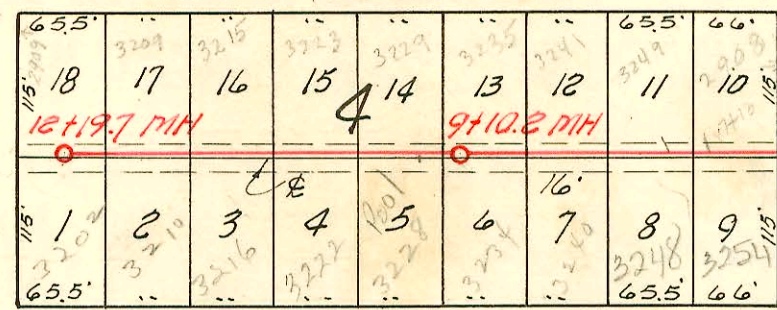
AVE.



ST.

ST. PAUL

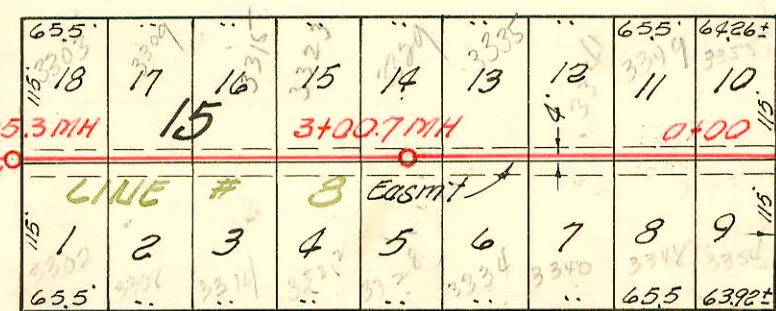
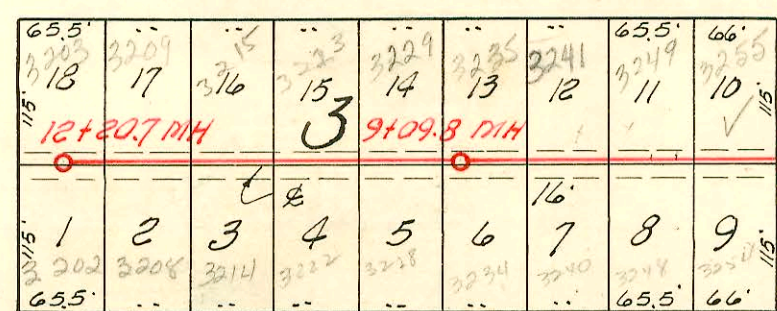
AVE.



ST.

CHASE

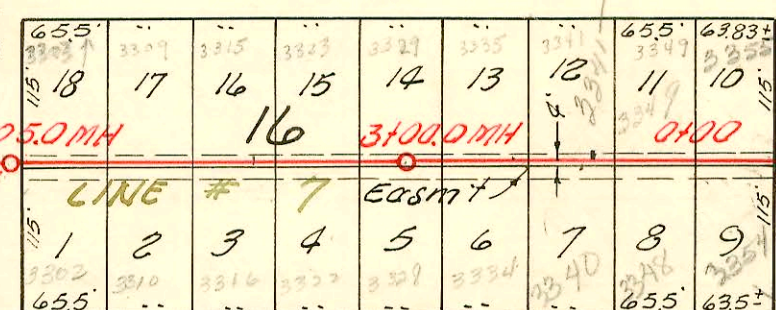
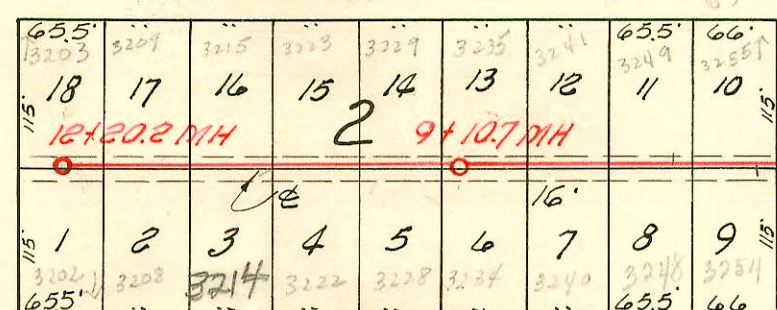
AVE.



ST.

CLUSTER

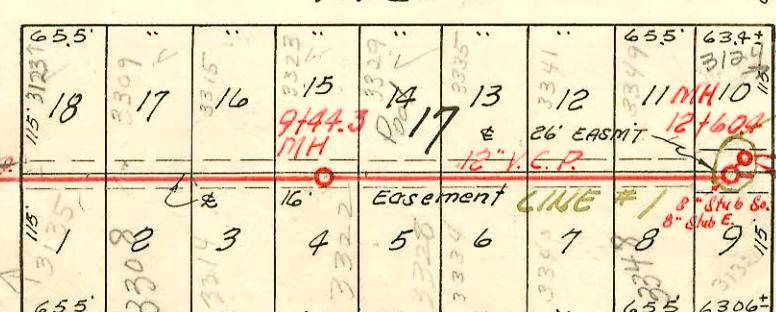
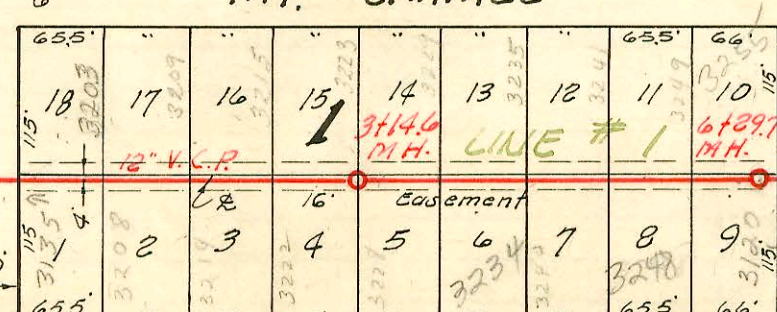
AVE.



ST.

MT. CARMEL

AVE.



ST.

SHERIDAN

AVE.

0+00 New MH.

NOTE:
Construction record recorded on pages 82 to 86 inclusive.

Connected to Southwest Interceptor Refer M-73

LAT. 13, S. S. 22

W. B. CARTER CONST. CO. INC., 8-17-55

BK. NO. K-32, PROJ. NO. C25-31

CONSTRUCTION RECORD

SERVICE RECORD

STATION	ELEVATION		Depth	MANHOLE	4-INCH "Y" BRANCHES		No. of Permit		House Number		DATE OF PERMITS	
	Ground	Grade			North West	South East	North West	South East	North West	South East	North West	South East
Line #1 0+0	99.9	92.20	7.7	0+00 New MH								
1+0	99.6	92.36	7.2		0+72.7	0+69.7						3-18-80 3-1-56
2+0	99.6	92.52	7.1		1+03.2	1+37.6	052812		3135 W. 31st. So.		12-15-75	
3+0	99.3	92.68	6.6		2+21.5	2+07.2	063835		3214 S. Sheldon	3215 S. Mt. Carmel	11-14-77	7-25-55
	99.5	92.70	6.8	3+14.6	2+63.0	2+60.0	063836	20519	3222 S. Sheldon	3223 S. Mt. Carmel	11-3-77	4-2-88
4+0	99.4	92.84	6.6		3+43.4	3+40.4	063837	46011	3228 S. Sheldon	3229 S. Mt. Carmel	11-3-77	8-16-55
5+0	99.3	93.00	6.3		4+06.4	4+02.4	047111		3234 S. Sheldon	3235 S. Mt. Carmel	10-21-74	
					4+75.1	4+72.1	063838	5730	3240 S. Sheldon	3241 S. Mt. Carmel	11-3-77	7-26-55
6+0	99.0	93.16	5.8		5+34.5	5+31.5	047112	14463	3248 S. Sheldon	3249 S. Mt. Carmel	10-21-74	8-16-85 4-23-56
	99.0	93.21	5.8	6+29.7	5+91.5	5+88.5	045429	8189	3250 W. 32nd. Ct. S.	3251 S. Mt. Carmel	6/21/74	9-30-58
7+0	99.0	93.32	5.7									
					7+22.6	7+19.6	049052	7073	94-4594 94-4647 3135 W. 32nd. Ct. S.	8122 W. 32nd. Ct. S.	4-16-75	4-1-94 10-19-55
					7+85.5	7+82.5	049960	7684	3208 S. Sheldon	3209 S. Mt. Carmel	6-17-75	12-19-55
8+0	99.1	93.48	5.6		8+51.4	8+48.4	12962	96-2216	3314 S. Sheldon	3315 S. Mt. Carmel	1-22-82	12-26-96 12-16-55
9+0	99.1	93.64	5.5		9+14.0	9+11.0	051828	7085	3322 S. Sheldon	3323 S. Mt. Carmel	10-10-75	12-19-55
	99.1	93.71	5.4	9+44.3	9+83.2	9+80.2	051829	7086	3328 S. Sheldon	3329 S. Mt. Carmel	10-10-75	12-19-55
10+0	99.1	93.80	5.3		10+47.4	10+44.4	051614	7153	3334 S. Sheldon	3335 S. Mt. Carmel	9-30-75	1-3-55
11+0	98.7	93.96	4.7		11+13.1	11+10.1	051615	7152	3340 S. Sheldon	3341 S. Mt. Carmel	9-30-75	6-6-94 1-3-55
					11+79.0	11+76.0	049961	7157	3348 S. Sheldon	3349 S. Mt. Carmel	6-17-75	7-3-55
12+0	98.1	94.12	4.0		12+42.0	12+39.0	049051	7179	3350 W. 33rd	3351 W. 33rd	4-16-75	3-6-99 7-3-55
	98.2	94.22	4.0	12+60.4								
Line #2 0-29.5	98.0	84.44	13.6	0-29.5								
0+0	98.0	84.50	13.5									
1+0	97.8	84.70	13.1									
2+0	97.4	84.90	12.5	S. D. MH	2+74.7	8" Stub	So.					
	97.7	85.06	12.4									
3+0	98.3	85.10	13.2									
4+0	98.1	85.30	12.8									
5+0	98.2	85.50	12.7	S. D. MH	5+64.3	8" Stub	So.					
	98.1	85.64	12.5									
6+0	98.0	85.70	12.3									
7+0	97.8	85.90	11.9									
8+0	97.2	86.10	11.1	D. MH	8+61.9	8" Stub	So.					
	97.8	86.22	11.6									
9+0	97.6	86.30	11.3									
10+0	98.1	86.50	11.4									
11+0	97.4	86.70	10.7									
	97.4	86.80	10.6	11+52.0	8" Stub	So.						
12+0	97.4	86.90	10.5									
13+0	98.0	87.10	10.9									
14+0	98.0	87.30	10.7									
	97.8	87.38	10.4	14+42.5	8" Stub	So.						
15+0	97.1	87.50	9.6									
16+0	97.2	87.70	9.5									
17+0	97.0	87.90	9.1									
	97.0	87.96	9.0	17+32.7	8" Stub	So.						
					17+67.0	17+64.0	5154	10439	3350 S. Edwards	3351 S. Richmond	8-23-57	6-1-59
18+0	97.4	88.33	9.3		18+27.5	18+24.5	5153	10440	3344 S. Edwards	3347 S. Richmond	8-23-57	6-7-59 6-1-59
	97.9	88.61	9.3	18+71.8	18+91.0	18+88.0	5043	10242	3337 S. Edwards	3341 S. Richmond	7-30-57	6-27-80 5-8-59
19+0	98.0	88.73	9.3		19+60.0	19+57.0		10316				5-5-59
20+0	97.8	89.13	8.7									

NOTE:

Construction Record for this project continues on page 83.

95-137962 - Top = 3201 Mt. Carmel - Reynolds 3-1-56
5043 S. Edwards - Smith 8-5-57
4380 Top 3229 S. Richmond R.K. Key 2-25-59 (26+60)