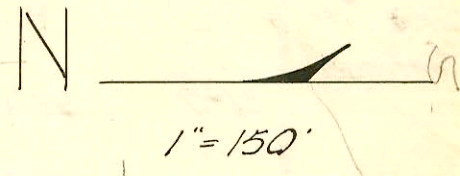
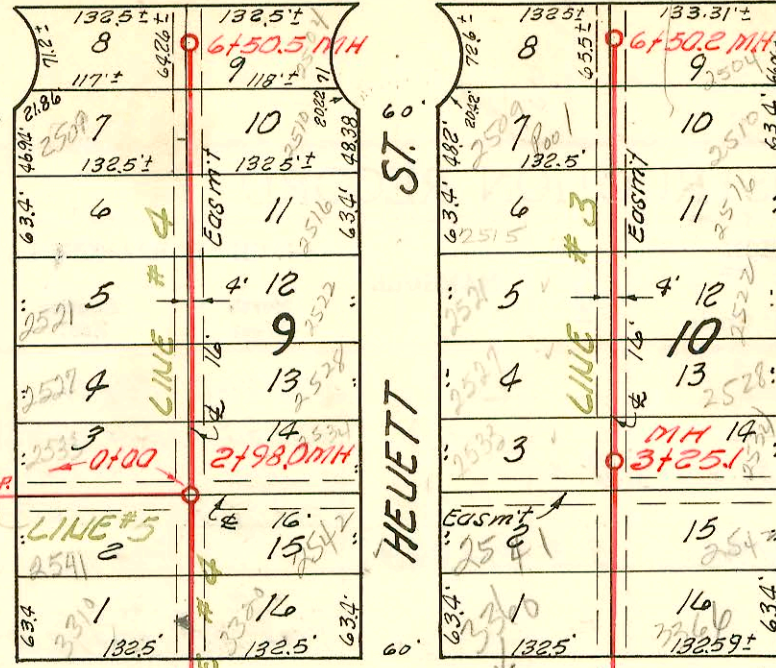
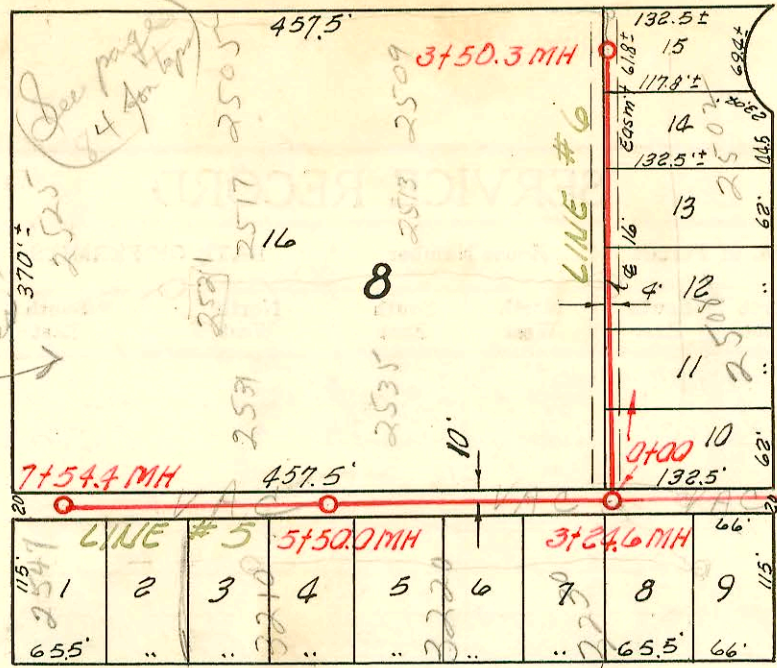


MERIDIAN

AVE.

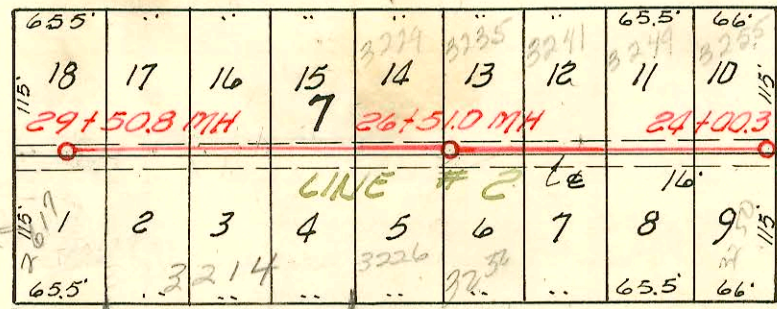
82 A



SO.

RICHMOND

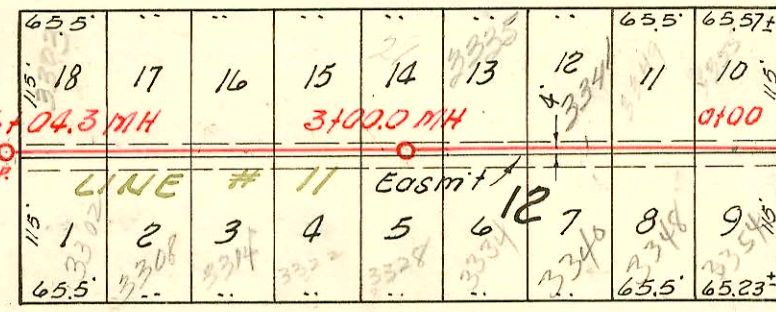
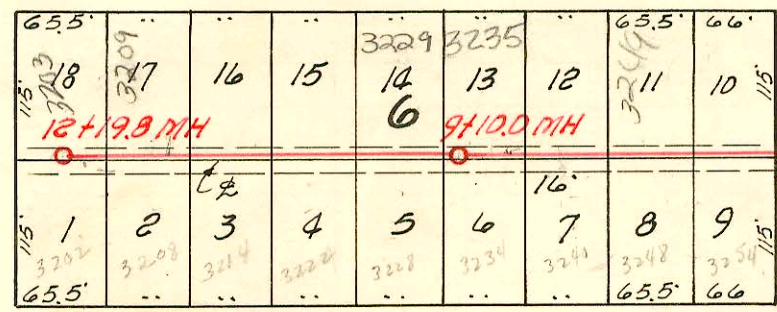
AVE.



SO.

EDWARDS

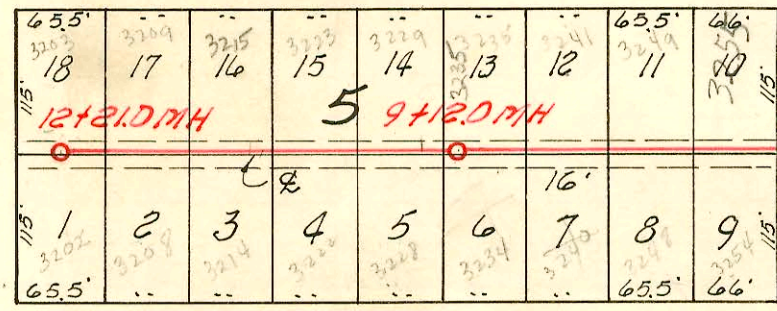
AVE.



ST.

GORDON

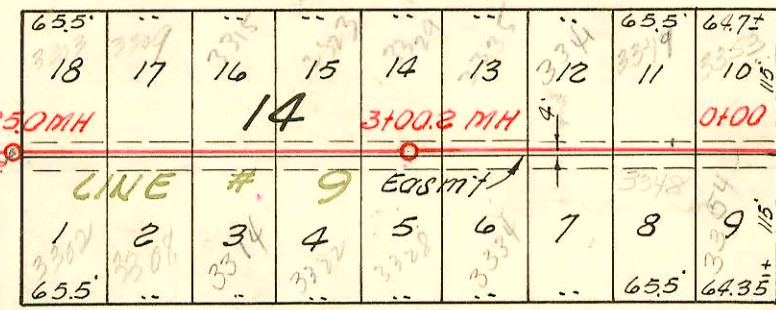
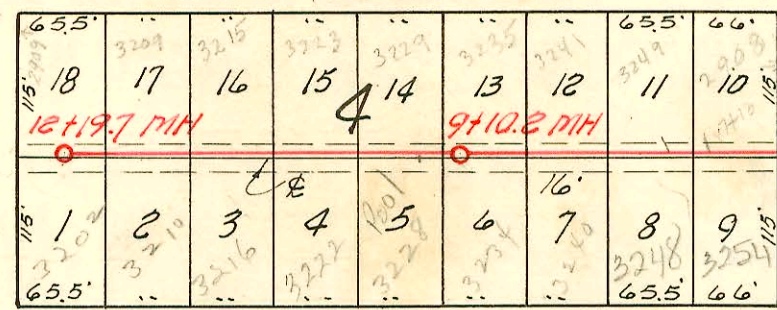
AVE.



ST.

ST. PAUL

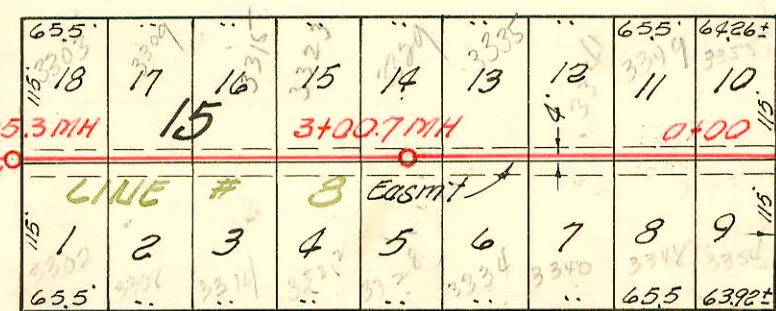
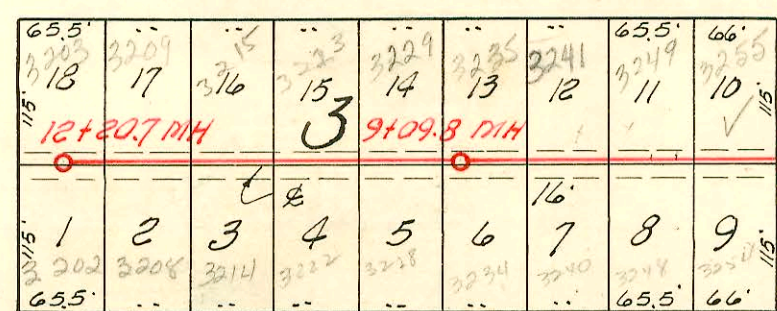
AVE.



ST.

CHASE

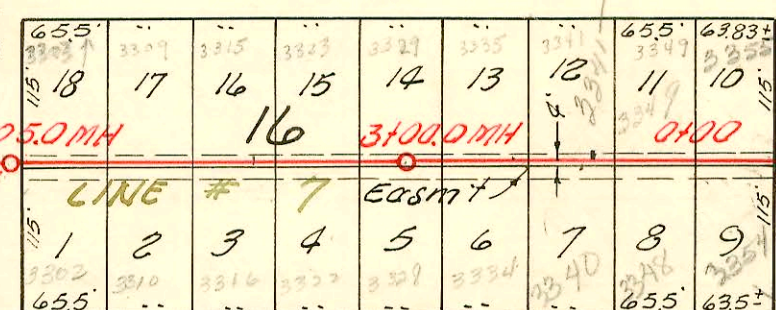
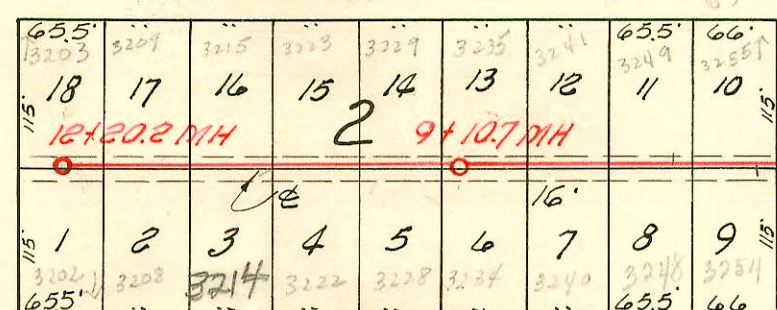
AVE.



ST.

CLUSTER

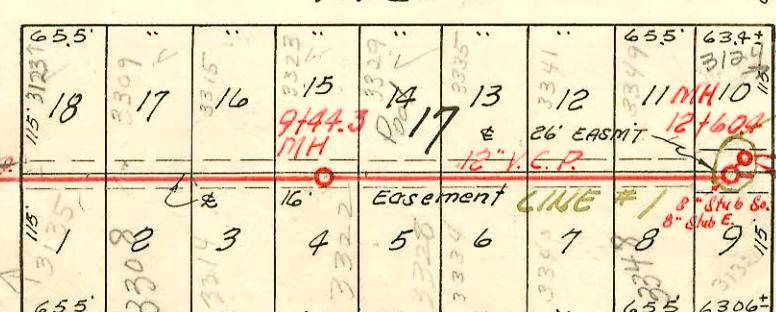
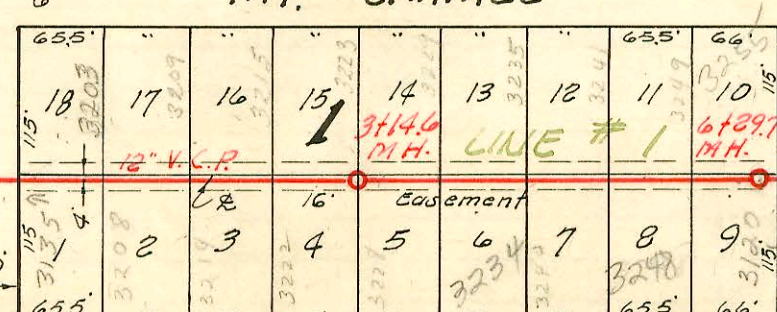
AVE.



ST.

MT. CARMEL

AVE.



ST.

SHERIDAN

AVE.

NOTE:  
Construction record recorded on pages 82 to 86 inclusive.

Connected to Southwest Interceptor Refer M-73

LAT. 13, S. S. 22

W. B. CARTER CONST. CO. INC., 8-17-55

BK. NO. K-32, PROJ. NO. C25-31

CONSTRUCTION RECORD

SERVICE RECORD

STATION	ELEVATION		Depth	MANHOLE	4-INCH "Y" BRANCHES		No. of Permit		House Number		DATE OF PERMITS		
	Ground	Grade			North West	South East	North West	South East	North West	South East	North West	South East	
Line # 2 Continued					20+24.0	20+21.0	4697	10315	3329	3329	12-3-58	5-5-59	
	21+0	98.3	89.53	8.8	20+93.5	20+90.5	4696	10314	3329	3329	6-19-57	5-5-59	
		98.2	89.93	8.3	21+57.0	21+54.0		10142	3315	3315		4-21-59	
	22+0			21+99.8	22+21.5	22+18.5	12184	10603	3309	3309	10-8-84	4-24-59	
					22+88.0	22+85.0	12184	10603	3309	3309	5-24-57	2-27-59	
	23+0	97.9	90.33	7.6									
	24+0	97.9	90.73	7.2	24+00.3	24+15.5	24+12.5	11225	9381	3255	3255	6-18-84	4-29-59
					24+82.5	24+74.5	5267	9383	3255	3255	2-7-55	2-27-59	
	25+0	98.0	91.13	6.9									
	26+0	97.9	91.53	6.4	25+48.5	25+45.5	9639	9382	3248	3248		3-27-59	
					26+12.0	26+09.0	11683	9381	3237	3237	10-1-79	2-24-59	
		98.0	91.73	6.3	26+51.0	26+73.0	11683	9381	3237	3237		4-25-56	
	27+0	98.0	91.93	6.1									
	28+0	98.0	92.33	5.7									
					28+09.0	28+06.0	#625		3238	3238		4-25-56	
	29+0	98.1	92.73	5.4									
		98.2	92.93	5.3	29+38.0	29+35.0							
Line # 3	0+0	97.9	90.40	7.5	NORTH SOUTH								
	1+0	97.5	90.80	6.7									
	2+0	97.4	91.20	6.2	1+97.5	1+94.5	8883	10441	3360	3360	12-23-58	6-1-59	
	3+0	97.4	91.60	5.8	2+58.0	2+55.0	8884	10143	2541	2542	12-23-58	4-21-59	
		97.4	91.70	5.7	3+15.8	3+12.8	11841	10442	2538	2534	11-12-59	6-1-59	
	4+0	97.8	92.00	5.8	3+82.5	3+79.5	11842	10144	2527	2528	11-12-59	4-21-59	
	5+0	97.3	92.40	4.9	4+45.5	4+42.5	11843	10443	2521	2522	11-12-59	6-1-59	
					5+12.5	5+09.5	14084	10444	2515	2516	4-19-61	6-1-59	
	6+0	96.7	92.80	3.9	5+73.0	5+70.0	14617		2509	2509	8-30-61		
					6+40.0	6+37.0	14825	86276	2503	2504	10-12-61	6-26-67	
		96.9	93.00	3.9	6+50.2								
Line # 4	0+0	98.2	90.11	8.1	NORTH SOUTH								
	1+0	98.1	90.30	7.8									
	2+0	97.9	90.50	7.4	1+97.2	1+94.2	9633	9634	3310	3320	3-13-59	3-13-59	
		97.9	90.70	7.2	2+59.0	2+56.0	9828	10313	2541	2542	3-30-59	5-5-59	
	3+0			2+98.0	3+20.3	3+17.3	9829	9725	2533	2534	3-30-59	3-17-59	
					3+83.5	3+80.5	9830	9726	2527	2528	3-30-59	3-17-59	
	4+0	97.8	90.90	4.9	4+47.3	4+44.3	9831	12007	2521	2522	3-30-59	11-27-59	
	5+0	98.1	91.10	7.0	5+11.5	5+08.5	11671	12006	2515	2516	10-26-59	11-27-59	
					5+75.5	5+72.5	11670	12005	2509	2510	10-26-59	11-27-59	
	6+0	97.6	91.30	6.3	6+42.0	6+39.0	11669	12004	2503	2504	10-26-59	11-27-59	
		97.3	91.40	5.9	6+50.5								
Line # 5	0+0	97.9	90.80	7.1	WEST								
	1+0	97.7	91.00	6.7									
	2+0	97.6	91.20	6.4	2+17.3	2+14.5							
	3+0	97.7	91.40	6.3									

NOTE: Line # 5 Continues on page 84.  
 #11225 - 3226 S. Edwards - 6-18-84 - Multi Power - 235' S of 29+50.8 mH - 26+95.8  
 #6681-top - 2617 W. 314 S. Richmond - 10-14-55 (29+01.2)  
 #4564 - 3314 S. Edwards - 4-18-57  
 #6689-top - 2617 W. 314 S. Richmond - 4-17-57  
 #9385-top - 3303 S. Richmond - R.K. Royalty 2-24-59 (22+92.8)  
 #9382-top - 3241 S. Richmond - R.K. Royalty 2-24-59 (25+42)  
 #C40989 - 3214 S. Edwards - Argo - 8-30-73 (mH 29+50.8) (27+50.8)

$$\begin{array}{r}
 29450.8 \\
 28275.0 \\
 \hline
 75.8
 \end{array}$$

W. J. ...

...