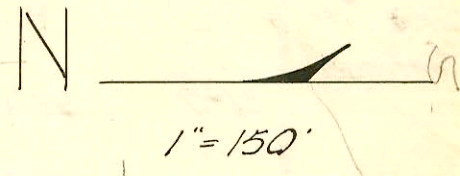
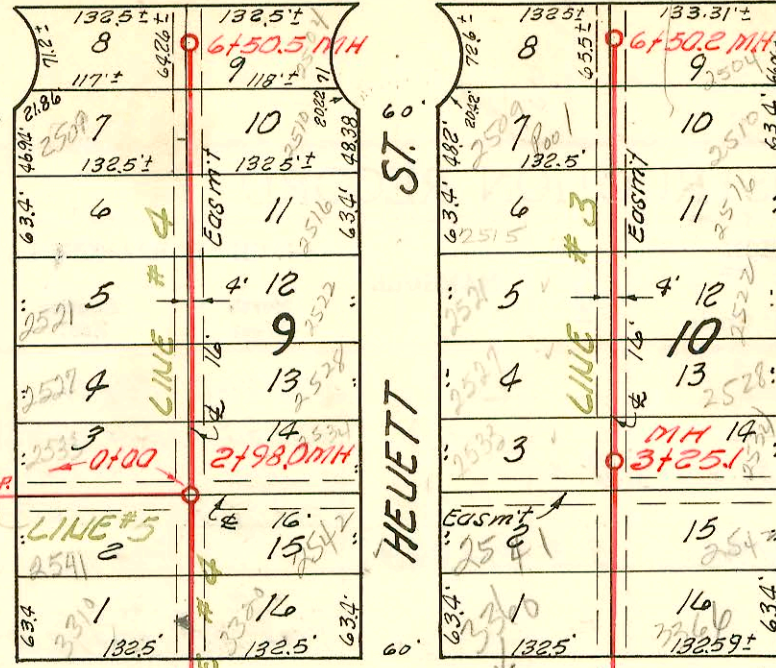
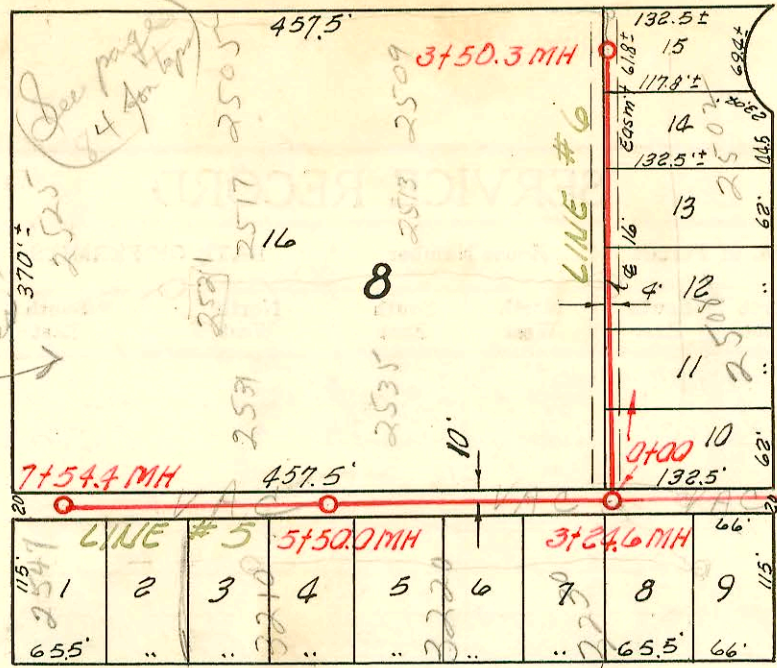


MERIDIAN

AVE.

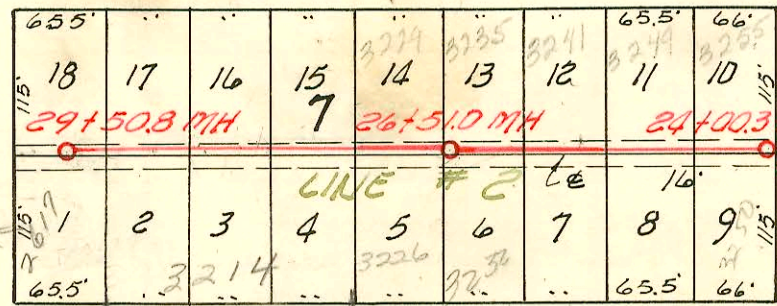
82 A



SO.

RICHMOND

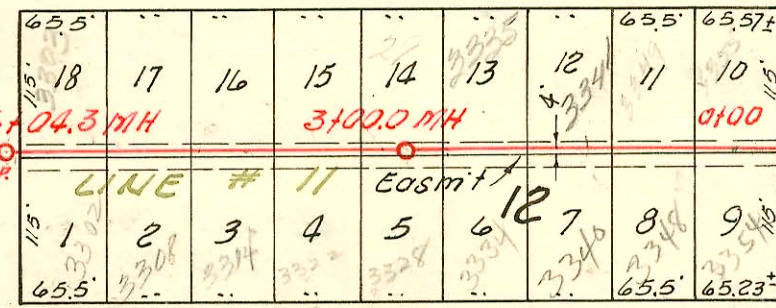
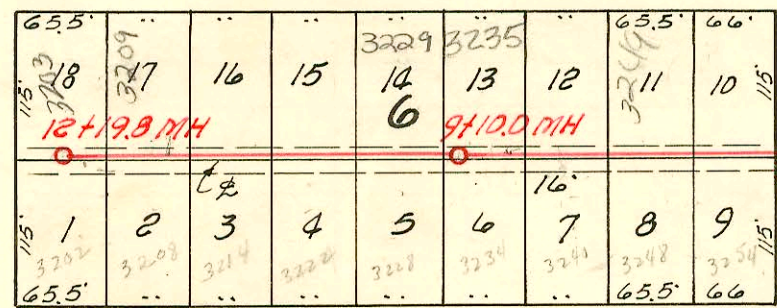
AVE.



SO.

EDWARDS

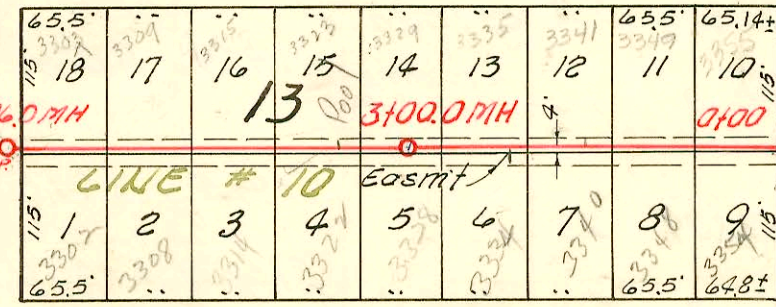
AVE.



ST.

GORDON

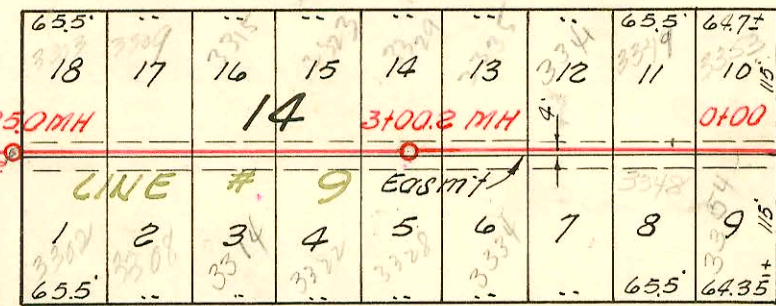
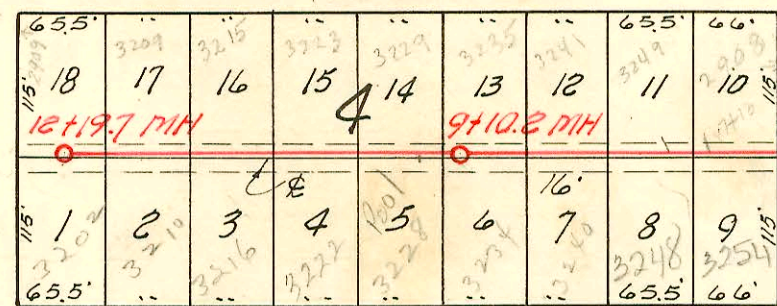
AVE.



ST.

ST. PAUL

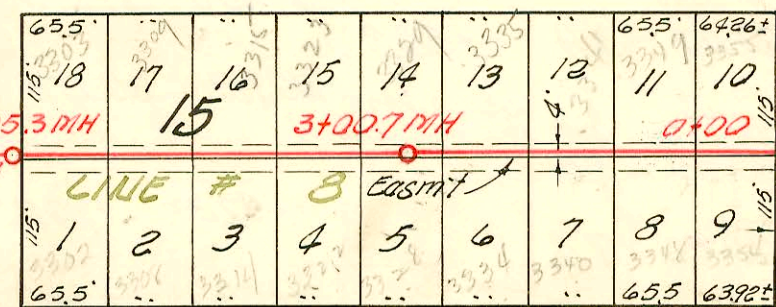
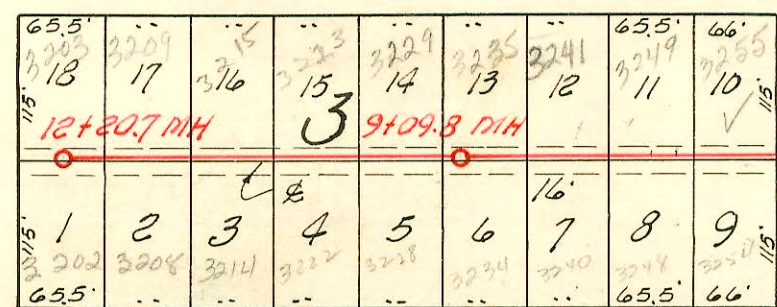
AVE.



ST.

CHASE

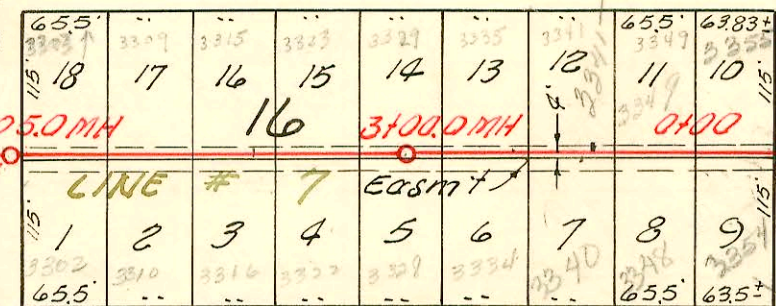
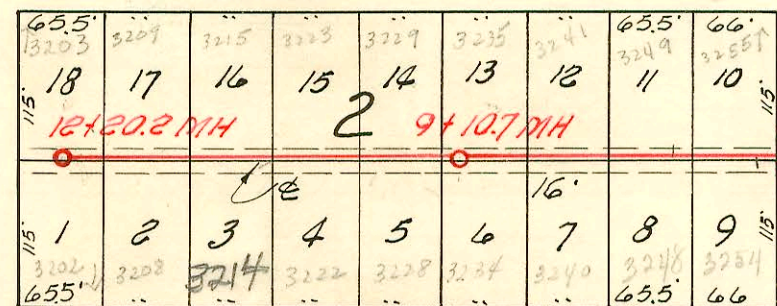
AVE.



ST.

CLUSTER

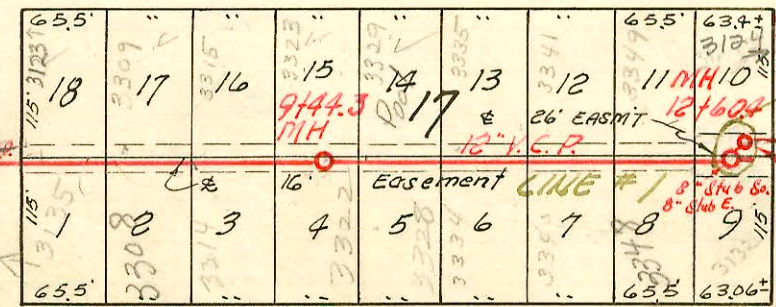
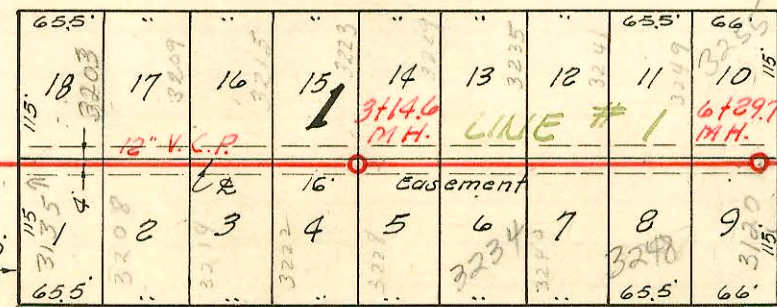
AVE.



ST.

MT. CARMEL

AVE.



ST.

SHERIDAN

AVE.

NOTE:
Construction record recorded on pages 82 to 86 inclusive.

Connected to Southwest Interceptor Refer M-73

LAT. 13, S. S. 22

W. B. CARTER CONST. CO. INC., 8-17-55

BK. NO. K-32, PROJ. NO. C25-31

CONSTRUCTION RECORD

SERVICE RECORD

| STATION | ELEVATION | | Depth | MANHOLE | 4-INCH "Y" BRANCHES | | No. of Permit | | House Number | | DATE OF PERMITS | | | |
|----------------------|-----------|-------|-------|-----------------------------|---------------------|------------|---------------|------------|--------------|------------|-----------------|-------------|------------|------------|
| | Ground | Grade | | | North West | South East | North West | South East | North West | South East | North West | South East | North West | South East |
| | | | | | | | | | | | | | | |
| Line #5 Continued | 97.7 | 91.45 | 6.3 | 3+24.6 | | | | | | | | | | |
| 4+0 | 97.7 | 91.60 | 6.1 | | 3+49.3 | | | | | | | | | |
| | | | | | 4+15.7 | 4+11 | | | | | | | | |
| | | | | | 4+79.5 | 4+76.5 | #C7240 | | 2535 W. | | | 3-8-68 | | |
| | | | | | | | | | 31st St. No. | | | Ap. 3 | | |
| 5+0 | 97.9 | 91.80 | 6.1 | | 5+43.3 | 5+40.3 | #C7234 | | 2531 W. | | | 3-8-68 | | |
| | | | | | | | | | 31st St. No. | | | Ap. 5 | | |
| 6+0 | 97.8 | 91.90 | 5.9 | 5+50.0 | | | | | | | | | | |
| | 97.4 | 92.00 | 5.4 | | 6+14.0 | 6+11.0 | #C7231 | | 2531 W. | | | 3-8-68 | | |
| | | | | | 6+80.5 | 6+77.5 | 6849 | | 3212 S. | | | Ap. 2 | | |
| | | | | | | | | | Richmond | | | Bldg. check | | |
| 7+0 | 97.8 | 92.20 | 5.6 | | 7+44.5 | 7+41.5 | 25690 | | 2547 W | | | 5-24-60 | | |
| | | | | | | | | | 31st St. | | | | | |
| | 97.5 | 92.31 | 5.2 | 7+54.4 | | | | | | | | | | |
| Line #6 | 0+0 | 97.7 | 6.1 | 0+00 = 3+24.6 in Line #5 | NORTH | SOUTH | | | | | | | | |
| | | | | | 0+32.0 | 0+29.0 | | | | | | | | |
| | | | | | 0+95.5 | 0+92.5 | | | | | | | | |
| 1+0 | 97.6 | 91.80 | 5.8 | | 1+55.7 | 1+52.7 | | | | | | | | |
| 2+0 | 97.4 | 92.00 | 5.4 | | 2+16.5 | 2+13.5 | | | | | | | | |
| | | | | | 2+79.5 | 2+76.5 | | | | | | | | |
| 3+0 | 97.3 | 92.20 | 5.1 | | 3+43.0 | 3+40.0 | | | | | | | | |
| | | | | | 97.2 | 92.30 | 4.9 | 3+50.3 | | | | | | |
| Line #7 | 0+0 | 97.7 | 7.0 | 0+00 = 2+74.7 in Line #2 | WEST | EAST | | | | | | | | |
| | | | | | 0+33.6 | 0+30.6 | | | | | | | | |
| | | | | | 0+94.0 | 0+91.0 | 3541 | | 4241 | | | 2-3-57 | | |
| | | | | | | | | | 1916 | | | 4-30-57 | | |
| | | | | | | | | | 3428 | | | 2-27-57 | | |
| 1+0 | 98.2 | 91.10 | 7.1 | | 1+60.2 | 1+57.2 | 3540 | | 19270 | | | 10-07-57 | | |
| | | | | | | | | | 2649 | | | 2-4-57 | | |
| 2+0 | 98.4 | 91.50 | 6.9 | | 2+26.0 | 2+23.0 | 2576 | | 19270 | | | 10-07-57 | | |
| | | | | | 2+92.5 | 2+89.5 | 2575 | | 2000 | | | 11-30-56 | | |
| | | | | | | | | | 2319 | | | 11-30-56 | | |
| 3+0 | 98.3 | 91.90 | 6.4 | 3+00.0 | 3+56.0 | 3+53.0 | 2574 | | 16173 | | | 4-21-56 | | |
| | | | | | | | | | 2773 | | | 11-16-56 | | |
| 4+0 | 98.5 | 92.30 | 6.2 | | 4+22.0 | 4+19.0 | 2573 | | 2974 | | | 11-6-56 | | |
| | | | | | 4+87.5 | 4+84.5 | 2572 | | 2972 | | | 2-13-56 | | |
| | | | | | | | | | 2972 | | | 11-6-56 | | |
| 5+0 | 98.8 | 92.70 | 6.1 | | 5+53.6 | 5+50.6 | 2571 | | 2971 | | | 10-24-56 | | |
| | | | | | | | | | 2971 | | | 1-1-56 | | |
| 6+0 | 99.2 | 93.12 | 6.1 | 6+05.0 | 6+77.2 | 6+74.2 | 2434 | | 11913 | | | 7-18-58 | | |
| | | | | | | | | | 26851 | | | 8-9-56 | | |
| 7+0 | 99.2 | 93.50 | 5.7 | | 7+44.0 | 7+41.0 | 2435 | | 11910 | | | 5-14-91 | | |
| | | | | | | | | | 11911 | | | 8-9-56 | | |
| 8+0 | 98.9 | 93.90 | 5.0 | | 8+11.6 | 8+08.6 | 41911 | | 3225 | | | 8-9-56 | | |
| | | | | | 8+73.4 | 8+70.3 | 41910 | | 3225 | | | 8-9-56 | | |
| 9+0 | 99.1 | 94.30 | 4.8 | | 9+36.4 | 9+33.4 | 13899 | | 1290 | | | 5-30-85 | | |
| | 99.1 | 94.34 | 4.8 | 9+10.7 | 10+08.2 | 10+05.2 | | | 1299 | | | 6-29-56 | | |
| 10+0 | 99.0 | 94.70 | 4.3 | | 10+56.5 | 10+59.5 | | | 1299 | | | 6-29-56 | | |
| 11+0 | 99.1 | 95.10 | 4.0 | | 11+38.0 | 11+35.0 | #86 | | 1287 | | | 3-1-56 | | |
| | | | | | | | | | 3210 | | | 6-29-56 | | |
| 12+0 | 99.1 | 95.50 | 3.6 | | 12+08.0 | 12+05.0 | 26946 | | 1167 | | | 1-28-91 | | |
| | | | | | | | #75 | | 1226 | | | 11-15-90 | | |
| | 99.3 | 95.58 | 3.7 | 12+20.2 | | | | | 3202 | | | 6-29-56 | | |
| Line #8 | 0+0 | 98.1 | 7.4 | 0+00 = 5+64.3 in Line #2 | WEST | EAST | | | | | | | | |
| | | | | | 0+31.2 | 0+29.2 | 5039 | | 3234 | | | 7-29-57 | | |
| | | | | | 0+94.5 | 0+91.5 | 5038 | | 13616 | | | 7-29-57 | | |
| 1+0 | 98.3 | 91.10 | 7.2 | | 1+60.3 | 1+57.3 | 5037 | | 12437 | | | 7-14-83 | | |
| | | | | | | | | | 3340 | | | 3-31-60 | | |
| 2+0 | 98.1 | 91.50 | 6.6 | | 2+27.0 | 2+24.0 | #5217 | | 11790 | | | 8-22-57 | | |
| | | | | | 2+90.7 | 2+87.7 | #5218 | | 11536 | | | 11-9-57 | | |

4240 - Top - 3207 Custer - Original - 4-26-57

NOTE: Line #8 Continues on page # 85.

4242 - Top - 3228 S. Custer - 8-11-57 - 14x18
 C 801 - Top - 3355 Chase 11-14-66 Justice Alley (0+64.6)
 C 75088 - 3354 S. Mc Carmel Repair 10-30-77 (3310'N of 0+00)
 021891 - 3214 Mt. Carmel - Repair - 11-10-88 (Serving)
 (10+56.7 top 4" SOR 35)

Line #5

Taps

Taps

#C7230 - 2531 W. 31st St. south - Leo. Griffin - 3-8-68 Apt. 1 - (6+31.6)
 #C7231 Apt. 2 wye (6+11)
 #C7232 Apt. 3 - (5+91)
 #C7233 Apt. 4 - (5+71)
 #C7234 Apt. 5 - wye (5+40.3)
 #C7235 Apt. 6 - (5+27.4)
 #C7236 Apt. 7 - (5+09.4)
 #C7237 Apt. 8 - (4+95.4)

#C7238 - 2535 W. 31st St. south - Leo. Griffin - 3-8-68 Apt. 1 (4+53)
 #C7239 Apt. 2 (4+38)
 #C7240 Apt. 3 - wye (4+12.7)
 #C7241 Apt. 4 - (3+96)
 #C7242 Apt. 5 - (3+77)
 #C7243 Apt. 6 - (3+63)
 #C7244 Apt. 7 - (3+44)

line #1 new line
 #C7471 thru C7476 - 3210 S. Richmond - Leo. Griffin - 3-25-68 } new line - new wye - see Bk. L. p. 164
 #C7477 thru C7483 - 3220 S. Richmond - Leo. Griffin - 3-25-68 } will be booked - see Bk. L. p. 164
 #C7484 thru 7489 - 3230 S. Richmond - Leo. Griffin - 3-25-68 } in new page by Engr. - see Bk. L. p. 164

line #2 new line
 #C7511 thru 7519 - 2502 W. 32nd St. so. - Leo. Griffin - 3-26-68 } - see Bk. L. p. 164
 #C7520 thru 7527 - 2508 W. 32nd St. so. - Leo. Griffin - 3-26-68 } - see Bk. L. p. 164

line #3 - New line
 #C7548 thru 7555 - 2505 W. 31st St. so. - Leo. Griffin - 3-27-68 - see Bk. L. p. 164
 #C7556 thru 7562 - 2509 W. 31st St. so. - Leo. Griffin - 3-27-68 - see Bk. L. p. 164

line #4 - New line
 #C7563 thru 7569 - 2513 W. 31st St. so. - Leo. Griffin - 3-27-68 - see Bk. L. p. 164
 #C7570 thru 7577 - 2517 W. 31st St. so. - Leo. Griffin - 3-27-68 - see Bk. L. p. 164

line #5 - New line
 #C7610 thru 7618 - 2525 W. 31st St. so. - Leo. Griffin - 3-28-68 see Bk. L. p. 164
 #C7619 - Club House - 2521 W. 31st St. so. - Leo. Griffin - 3-28-68 see Bk. L. p. 164. top.