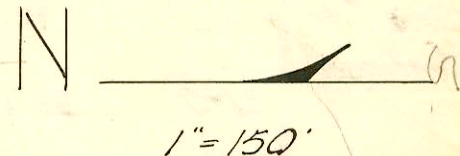
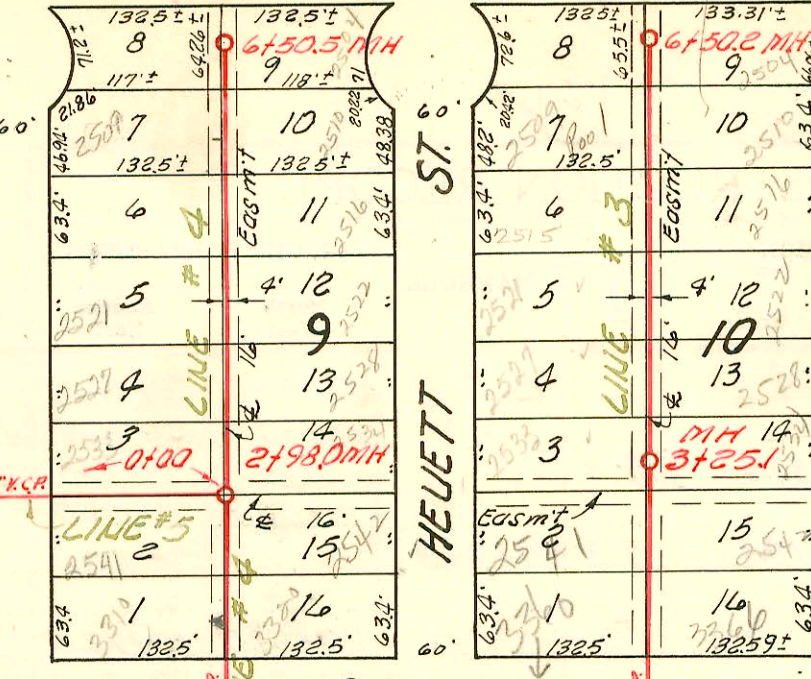
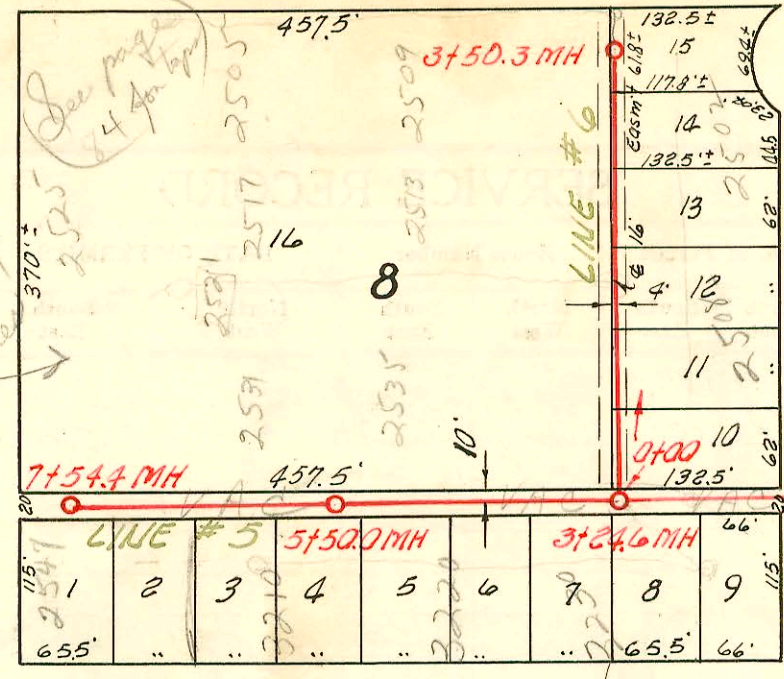


MERIDIAN

AVE.

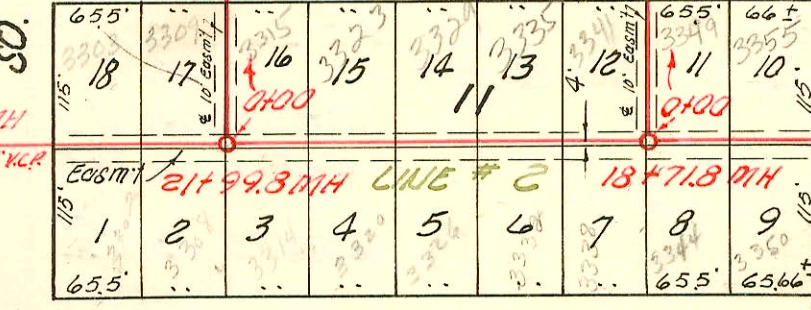
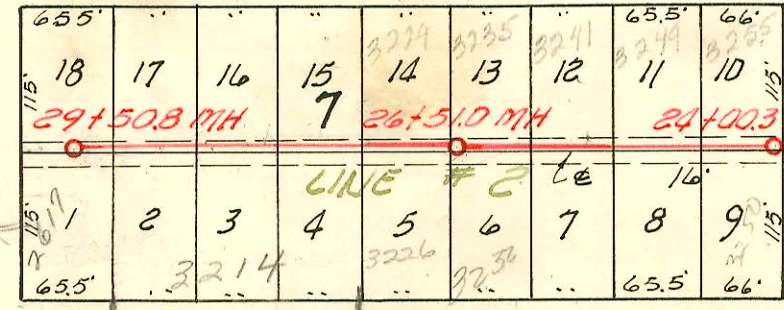
82 A



SO.

RICHMOND

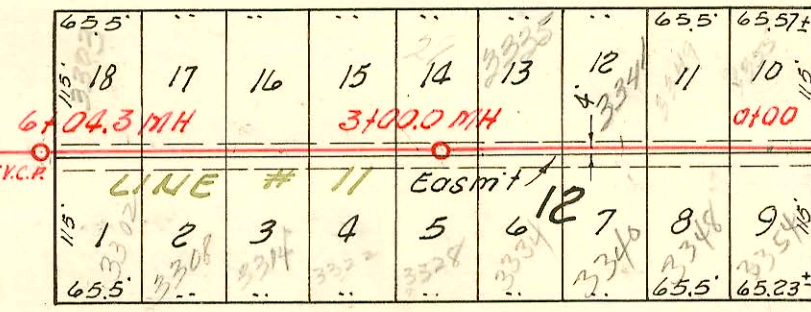
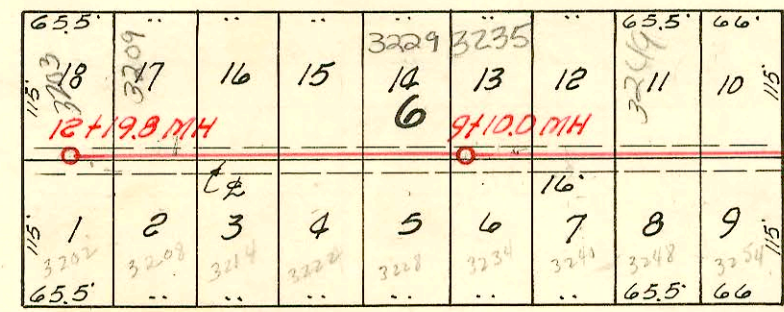
AVE.



SO.

EDWARDS

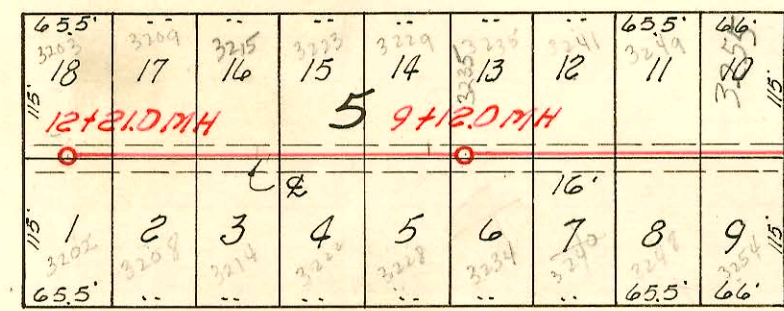
AVE.



ST.

GORDON

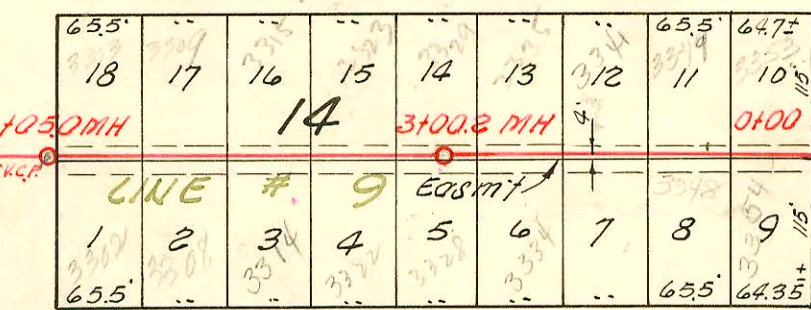
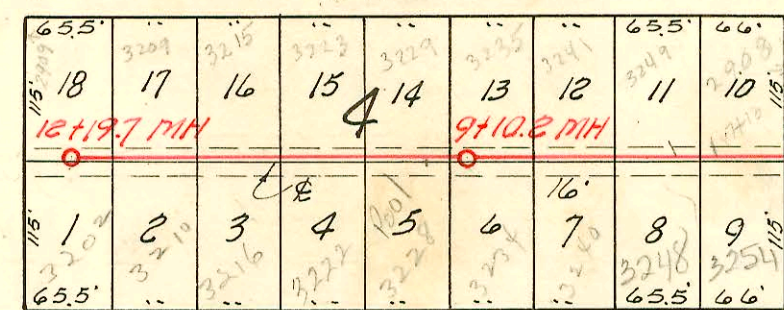
AVE.



ST.

ST. PAUL

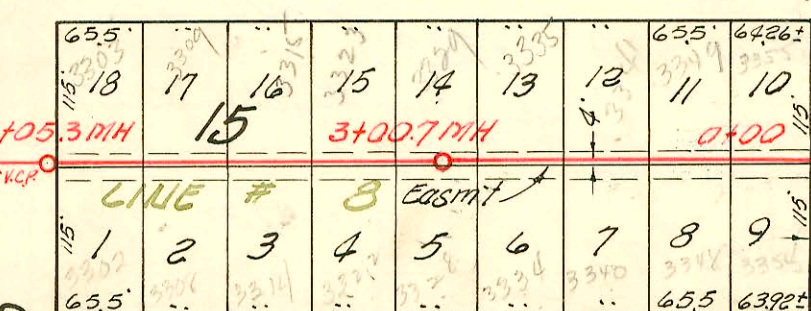
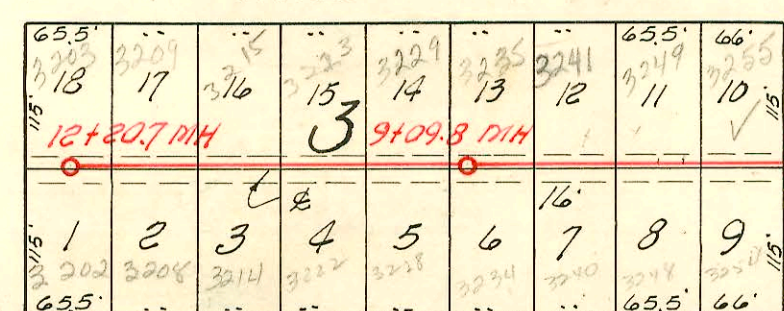
AVE.



ST.

CHASE

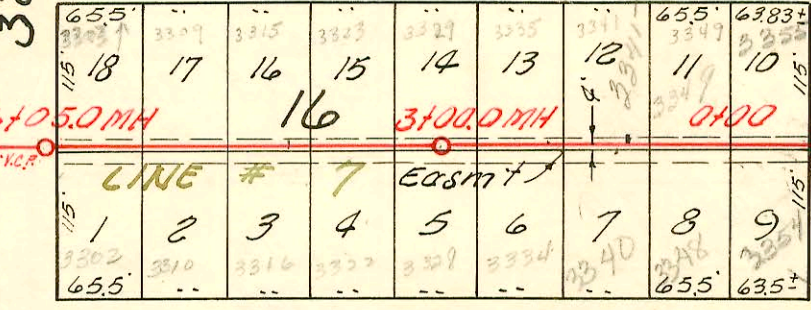
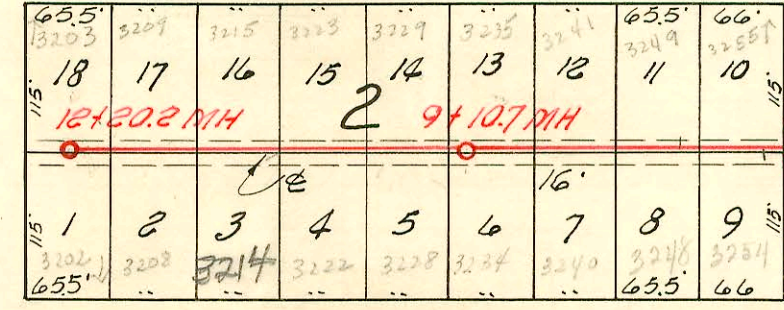
AVE.



ST.

CLUSTER

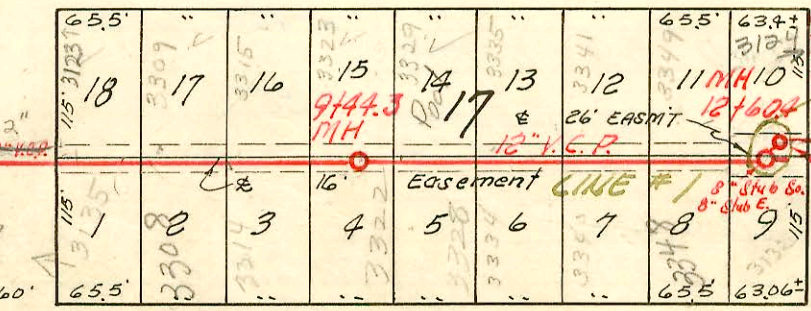
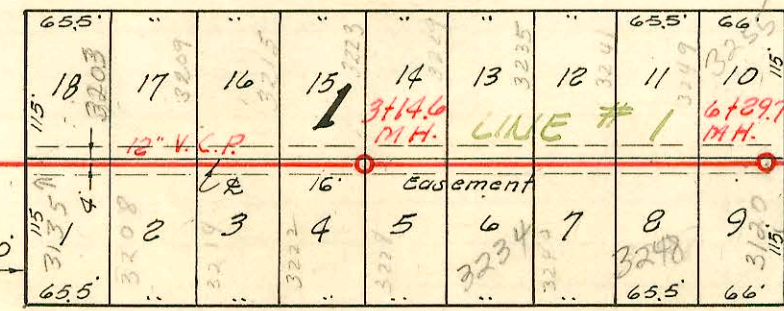
AVE.



ST.

MT. CARMEL

AVE.



ST.

SHERIDAN

AVE.

0+00 New MH.

NOTE:
Construction record recorded on pages 82 to 86 inclusive.

Connected to Southwest Interceptor Refer M-73

LAT. 13, S. S. 22

W. B. CARTER CONST. CO. INC., 8-17-55

BK. NO. K-32, PROJ. NO. C25-31

CONSTRUCTION RECORD

SERVICE RECORD

STATION	ELEVATION		Depth	MANHOLE	4-INCH "Y" BRANCHES		No. of Permit		House Number		DATE OF PERMITS	
	Ground	Grade			North West	South East	North West	South East	North West	South East	North West	South East
3+0	98.1	91.90	6.2	3+00.7								
					3+57.5	4" SDP 35 3+54.5	0219	0257	3322 S. Chase	3323A Chase	8-22-57	8-15-59 5-11-59
4+0	98.1	92.30	5.8		4+23.7	4+20.7	0513	10256	3314 S. Chase	3315 Chase	10-16-57	5-11-59
					4+89.7	4+86.7	0512	14232	3308 S. Chase	3309B Chase	10-16-57	5-31-61
5+0	98.4	92.70	5.7		5+57.9	5+53.9	0511	11322	3300 S. Chase	3303B Chase	10-16-57	8-24-59
6+0	98.8	93.12	5.7	6+05.3	6+78.5	6+75.5	4711	07-60927 8951	3254B Chase	3255B Chase	6-10-57	4-17-59 12-23-58
7+0	98.7	93.50	5.2		7+41.2	7+38.2	4710	10765	3248B Chase	3249 Chase	6-10-57	6-30-59
8+0	98.4	93.90	4.5		8+12.7	4" SDP 35 8+07.7	2000-1994 4709	10764	3240B Chase	3241S.R. Chase	1-24-60	10-23-59 6-30-59
					8+74.6	8+71.6	4708	10010	3238B Chase	3235 Chase	6-10-57	4-7-59
9+0	98.4	94.30	4.1		9+41.8	9+38.8	4262	10009	3228B Chase	3229 Chase	4-5-57	4-7-59
	98.4	94.34	4.1	9+09.8								
10+0	98.6	94.70	3.9		10+08.0	10+05.0	4261	9680	3222B Chase	3223 Chase	4-5-57	3-25-59
					10+71.5	10+68.5	4260	9679	3214B Chase	3215 Chase	4-5-57	3-25-59
11+0	99.0	95.10	3.9		11+38.2	11+35.2	4240	8950	3208B Chase	3209B Chase	4-3-57	12-23-58
12+0	99.1	95.50	3.6		12+05.7	12+02.7	4239	01-24157 8949	3202B Chase	3203B.R Chase	4-2-57	10-2-59 12-23-58
	99.1	95.58		12+20.7								
0+0	97.8	90.00	7.8	0+00 = 8+61.9 in Line #2	0+31.6	0+28.6	18645	8593	3254 Chase	3255B Chase	9-30-66	11-12-58
					0+95.2	0+92.2	03447	8582	3248 Chase	3249B Chase	6-7-67	11-12-58
1+0	97.6	90.40	7.2		1+62.0	1+59.0	07119	8620	3240B Chase	3241B Chase	3-6-68	11-10-58
2+0	98.0	90.80	7.2		2+25.5	2+22.5	02818	8619	3234 Chase	3235B Chase	4-26-67	11-10-58
					2+92.5	2+89.5	02546	8618	3228 Chase	3229B Chase	4-4-67	11-10-58
3+0	98.0	91.20	6.8	3+00.2	3+58.8	3+55.8	02545	8617	3222B Chase	3223B Chase	4-4-67	11-10-58
4+0	97.9	91.60	6.3		4+22.8	4+19.8	13874	8616	3214B Chase	3215B Chase	2-17-61	11-10-58
					4+86.0	4+83.0	24235 2276	5920	3208B Chase	3209B Chase	10-15-58	12-20-57
5+0	97.9	92.00	5.9		5+52.2	5+49.2	8275	5919	3202B Chase	3203B Chase	10-15-58	12-20-57
6+0	98.2	92.42	5.8	6+05.0	6+79.5		10488		3254B Chase		6-9-59	
7+0	98.6	92.80	5.8		7+49.5	7+46.5	10489	46321 46320	3248B Chase	3249B Chase	6-9-59	9-12-55
8+0	98.6	93.20	5.4		8+12.0	8+09.0	12298	46329	3240B Chase	3241B Chase	3-22-60	9-12-55
					8+78.5	8+75.5	12297	46328	3234B Chase	3235B Chase	3-22-60	9-12-55
9+0	98.6	93.60	5.0		9+41.3	9+38.3	11321	46327	3228B Chase	3229B Chase	8-24-59	9-12-55
	98.5	93.64	4.9	9+10.2	10+08.5	10+05.5	0002-04 09930	46326	3222B Chase	3223B Chase	4-10-60	7-12-57
10+0	98.5	94.00	4.5		10+74.5	10+71.5	9678	46325	3216B Chase	3217B Chase	3-25-59	9-12-55
11+0	98.6	94.40	4.2		11+41.0	11+38.0	9677	46324	3210B Chase	3211B Chase	3-25-59	9-12-55
					11+92.5	11+89.5	9676	46323	3202B Chase	3203B Chase	3-25-59	9-12-55
12+0	98.8	94.80	4.0									
	98.9	94.88	4.0	12+19.7								
0+00	97.4	90.00	7.4	0+00 = 11+52.0 in Line #2	0+28.6	0+25.6	8787	5795	3254 Chase	3255 Chase	12-1-58	12-3-57
					0+95.5	0+92.5	8788	5881	3248 Chase	3249B Chase	12-1-58	12-18-57
1+0	97.8	90.40	7.4		1+58.5	1+55.5	8789	5880	3240 Chase	3241B Chase	12-1-58	12-18-57

NOTE:

6561- top - 2908 West 32nd - Applegate July 10-15 55

Line #10 continues on page 86.

#8950 top. 3209 So. Chase - 12-23-58 Bot. Just (11+24.7)

2000-00199-1/2460-3240 S Custer - AAA# No leaks - 4" SCH40 - Replaced all but lower 8' of sewer - No alley - ITWISCO, I H Z Z