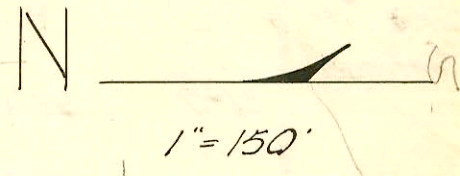
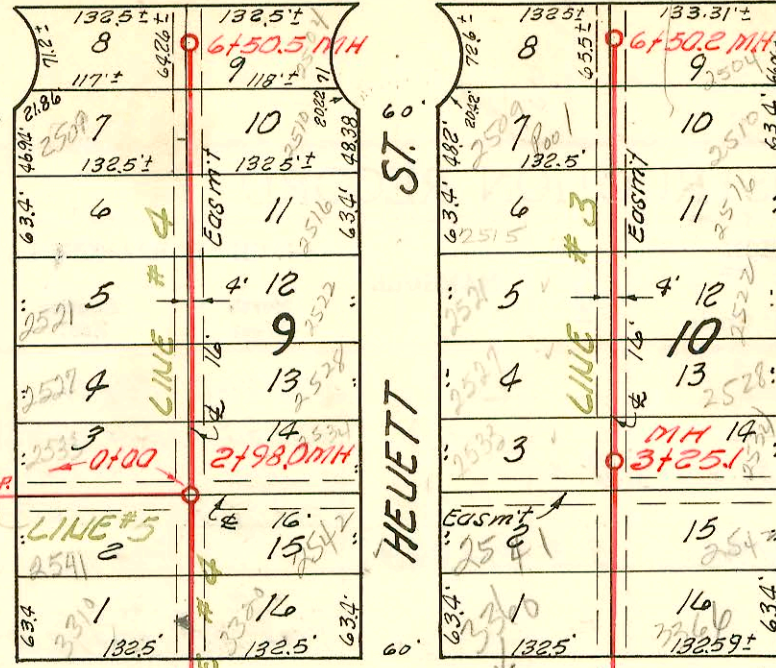
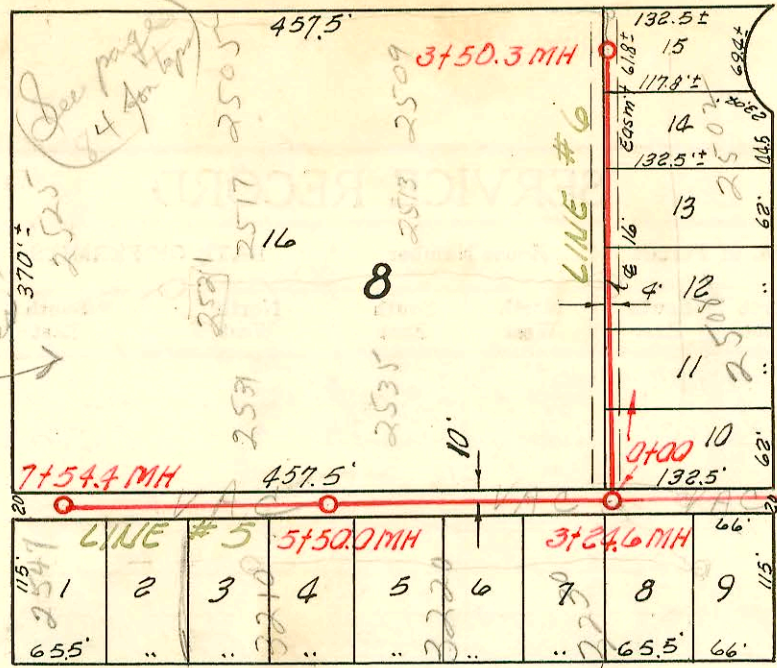


MERIDIAN

AVE.

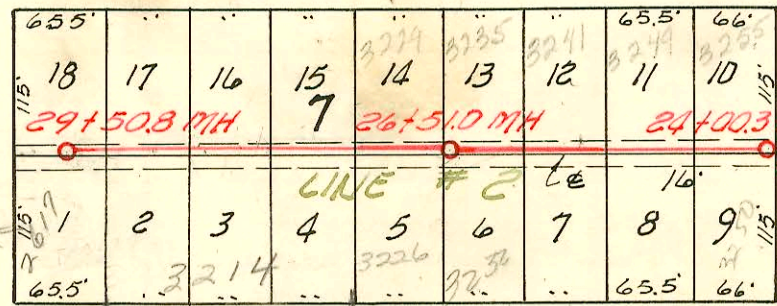
82 A



SO.

RICHMOND

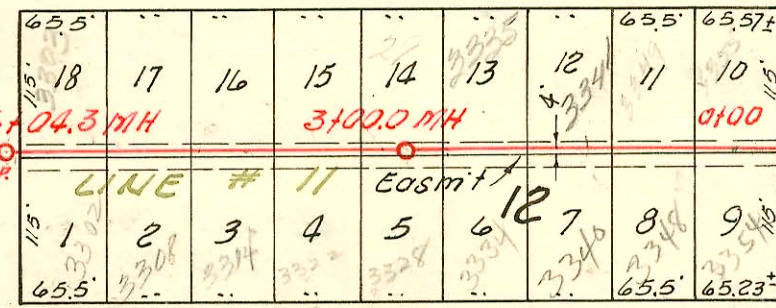
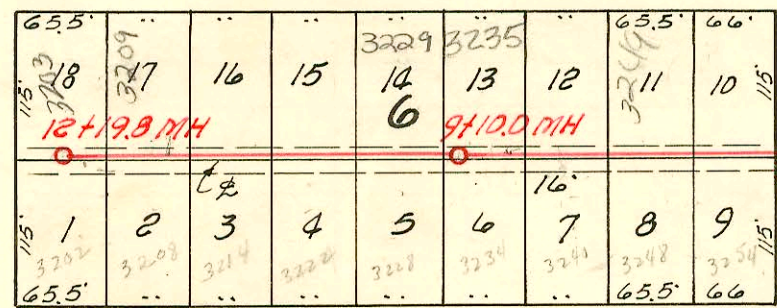
AVE.



SO.

EDWARDS

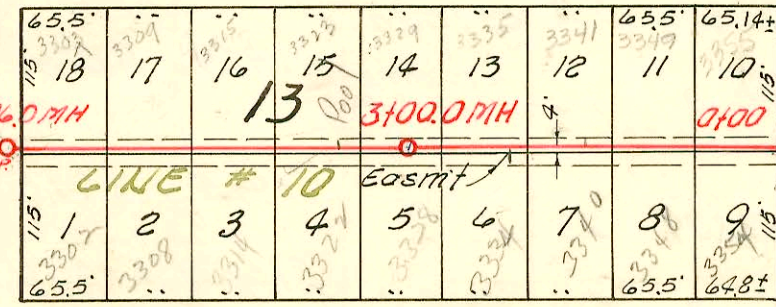
AVE.



ST.

GORDON

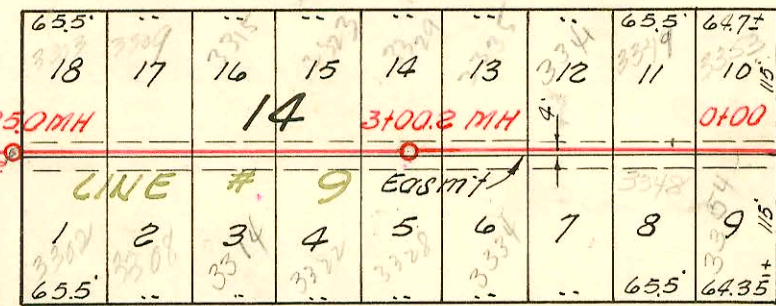
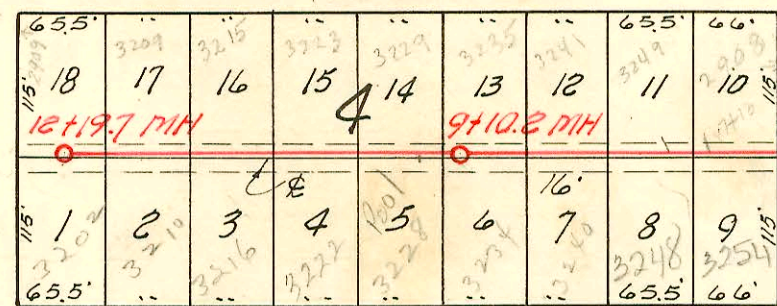
AVE.



ST.

ST. PAUL

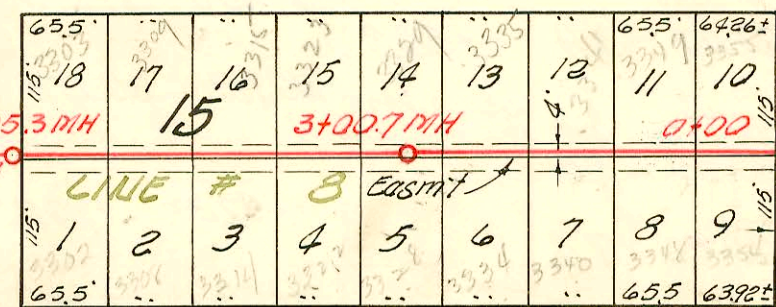
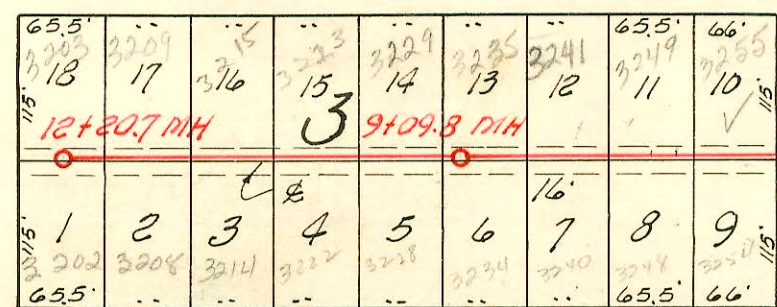
AVE.



ST.

CHASE

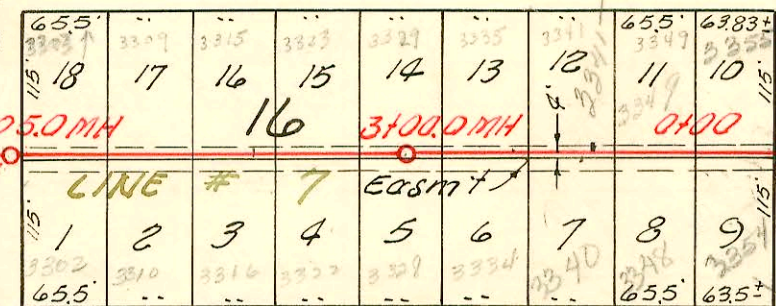
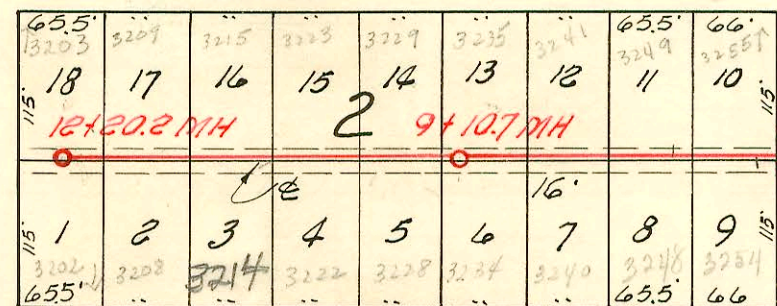
AVE.



ST.

CLUSTER

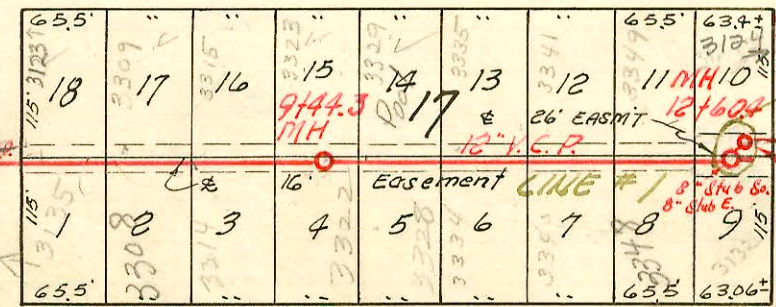
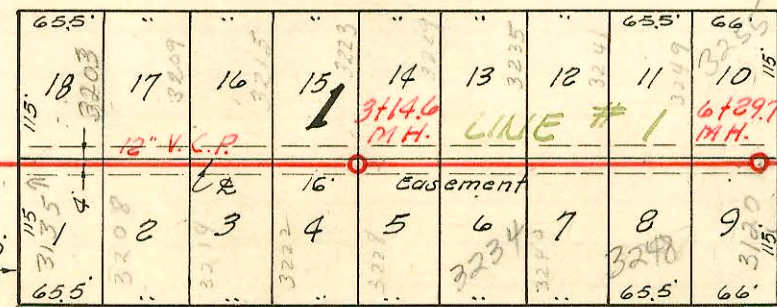
AVE.



ST.

MT. CARMEL

AVE.



ST.

SHERIDAN

AVE.

NOTE:
Construction record recorded on pages 82 to 86 inclusive.

Connected to Southwest Interceptor Refer M-73

LAT. 13, S. S. 22

W. B. CARTER CONST. CO. INC., 8-17-55

BK. NO. K-32, PROJ. NO. C25-31

CONSTRUCTION RECORD

SERVICE RECORD

STATION	ELEVATION		Depth	MANHOLE	4-INCH "Y" BRANCHES		No. of Permit		House Number		DATE OF PERMITS	
	Ground	Grade			North West	South East	North West	South East	North West	South East	North West	South East
Line #10 Continued 2+0	98.1	94.00	4.1		2+235 4" SCH 40	2+215	7378 2000-01142	5910	3334 S St. Paul	3333 S Gordon	6-27-58	12-17-57
3+0	97.5	91.20	6.3	3+00.0	2+915	2+88.5	7515	5909	3338 R St. Paul	3327 S Gordon	5-3-58	1-18-57 see next pg
4+0	97.5	91.60	5.9		3+58.3	3+55.3	7377	5784	3332 St. Paul	333 S Gordon	6-27-58	12-2-57
5+0	97.7	92.00	5.7		4+213	4+18.3	7376	5787	3314 S St. Paul	3315 S Gordon	6-27-58	7-1-93 12-2-57
6+0	98.0	92.42	5.6	6+06.0	4+90.0	4+87.0	7093	5600	3303 St. Paul	3309 S Gordon	6-11-58	11-12-57
7+0	98.0	92.80	5.2		5+57.0	5+54.0	2092	5705	3302 St. Paul	3309 S Gordon	6-11-58	11-14-57
8+0	97.9	93.20	4.7		6+79.5	6+76.5	#806	#6382	3257 S St. Paul	3255 S Gordon	5-9-56	9-13-55
9+0	98.3	93.60	4.7		7+45.5	7+42.5	#805	#6381	3248 R St. Paul	3249 S Gordon	5-9-56	9-13-55
10+0	98.1	94.00	4.1		8+09.7	8+06.7	#7052	#6380	3240 S St. Paul	3241 S Gordon	5-16-56	9-13-55
11+0	98.2	94.40	3.8		8+77.0	8+74.0	#804	#6377	3234 S St. Paul	3235 S Gordon	5-16-56	9-13-55
12+0	98.2	94.80	3.4		9+43.5	9+40.5	#803	#6375	3228 S St. Paul	3228 S Gordon	5-16-56	9-13-55
13+0	98.1	94.00	4.1		10+10.0	10+07.0	#802	#6377	3220 S St. Paul	3223 S Gordon	5-16-56	9-19-89
14+0	98.2	94.40	3.8		10+74.7	10+71.7	#801	#6376	3210 S St. Paul	3215 S Gordon	5-16-56	9-13-55
15+0	98.2	94.80	3.4		11+38.0	11+35.0	#800	#6388	3210 S St. Paul	3209 S Gordon	5-16-56	9-14-55
16+0	98.3	94.88	3.4	12+21.0	12+07.5	12+10.5	#799	#6381	3204 S St. Paul	3203 S Gordon	5-16-56	9-14-55
Line #11 0+0	97.8	89.40	8.4	0+00 = 14+42.5 in Line #2	0+30.5	0+27.5	7763	#3170	3354 St. Paul	3355 Gordon	8-12-58	11-27-57
1+0	97.3	89.80	7.5		0+95.0	0+92.0	7764	#3169	3348 St. Paul	3347 Gordon	8-12-58	11-27-57
2+0	97.2	90.20	7.0		1+61.0	1+58.0	7765	#2886	3340 St. Paul	3341 S Gordon	8-12-58	10-8-93 9-12-56
3+0	97.9	90.60	7.3	3+00.0	2+24.5	2+21.5	6839	#2885	3334 S St. Paul	3335 S Gordon	5-9-58	9-12-56
4+0	97.8	91.00	6.8		2+94.5	2+91.5	5145	1014	3325 S St. Paul	3327 S Gordon	8-23-57	6-6-56
5+0	98.2	91.40	6.8		3+57.5	3+54.5	5144	1017	3322 S St. Paul	3323 S Gordon	8-23-57	6-6-56
6+0	98.1	91.82	6.3	6+04.3	4+24.5	4+21.5	4255	1016	3314 St. Paul	3315 S Gordon	4-4-57	6-6-56
7+0	98.0	92.20	5.8		4+91.0	4+88.0	4254	1015	3308 S St. Paul	3309 S Gordon	4-3-57	6-6-56
8+0	98.2	92.60	5.6		5+54.0	5+51.0	3972	1014	3302 St. Paul	3303 Gordon	3-7-57	6-6-56
9+0	98.0	93.00	5.0	9+10.0	6+85.0	6+82.0	1560	6203	3359 S St. Paul	3355 S Gordon	2-29-56	8-31-55
10+0	98.1	93.40	4.7		7+42.8	7+39.8	157	6202	3344 St. Paul	3343 S Gordon	2-29-56	8-31-55
11+0	98.3	93.80	4.5		8+10.0	8+07.0	#59	6201	3338 St. Paul	3341 S Gordon	7-15-94	8-31-55
12+0	98.3	94.20	4.1		8+74.3	8+71.3	#58	6200	3332 St. Paul	3335 S Gordon	2-29-54	8-31-55
13+0	98.0	93.00	5.0		9+41.0	9+38.0	#61	6199	3326 St. Paul	3327 S Gordon	2-29-56	8-31-55
14+0	98.1	93.40	4.7		10+04.5	10+01.5	#60	6198	3320 St. Paul	3323 S Gordon	2-29-56	7-28-55 8-31-55
15+0	98.3	93.80	4.5		10+72.0	10+69.0	#876	6197	3314 St. Paul	3315 S Gordon	3-30-56	8-31-55
16+0	98.3	94.20	4.1		11+39.0	11+36.0	#6176		3309 St. Paul	3309 S Gordon		10-18-94 8-31-55
17+0	98.3	94.28	4.0	12+19.8	12+03.5	12+00.5	#7128	6195	3302 St. Paul	3303 S Gordon	1-6-56	8-31-55

#777- Tap 3208 S. Gordon - 2.58 plbg. - 1-6-56
 SWR 2000-01835 811500 3235 S. Gordon - Reddi Root'R - 4" SCH 40 - wye repair - 39.3' S of MH 9+12
 Replaced lower 1/2 only 1/22

Rep- 2000-01102-3328 S St Paul- 51300-urhite EXC- 4" SCH 40, Repl entire line- 1V22, 1V45.

Rep- 2000-01148-3248 S St Paul Ave- 51800-Clagfather- 4" SCH 40, Replaced all but lower 2' -No alley-
TWIN COY 1H22, 1H45