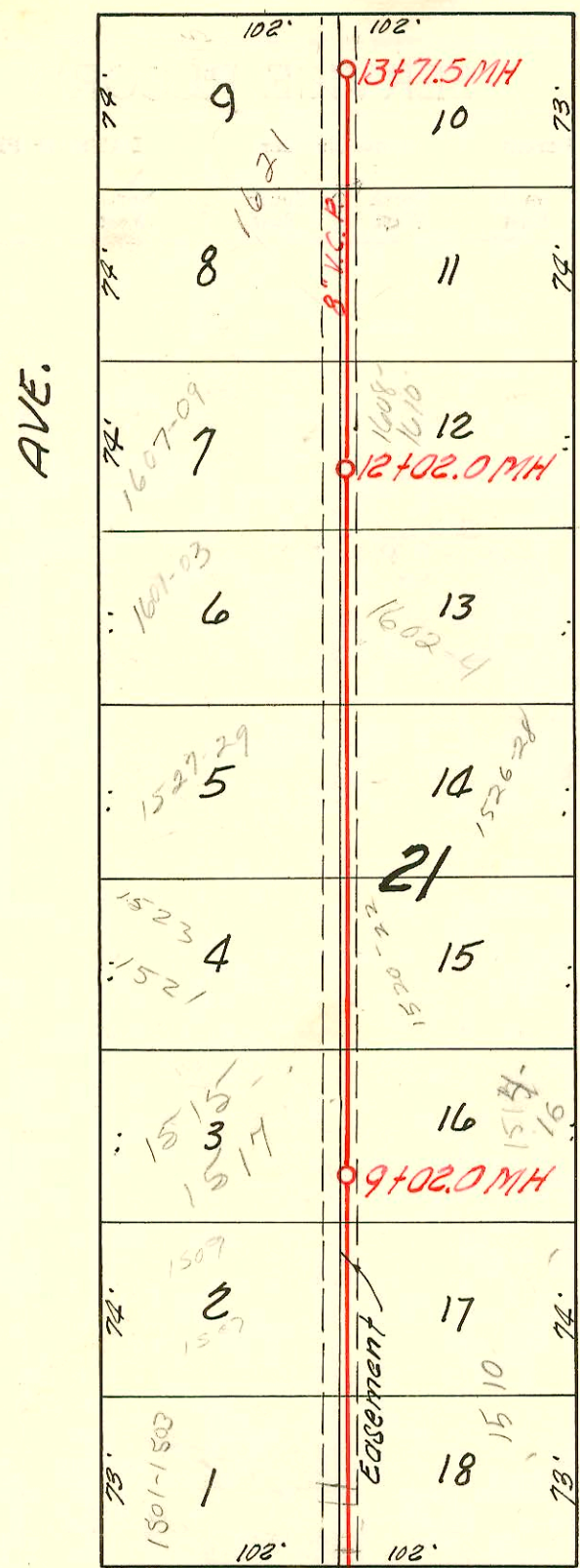
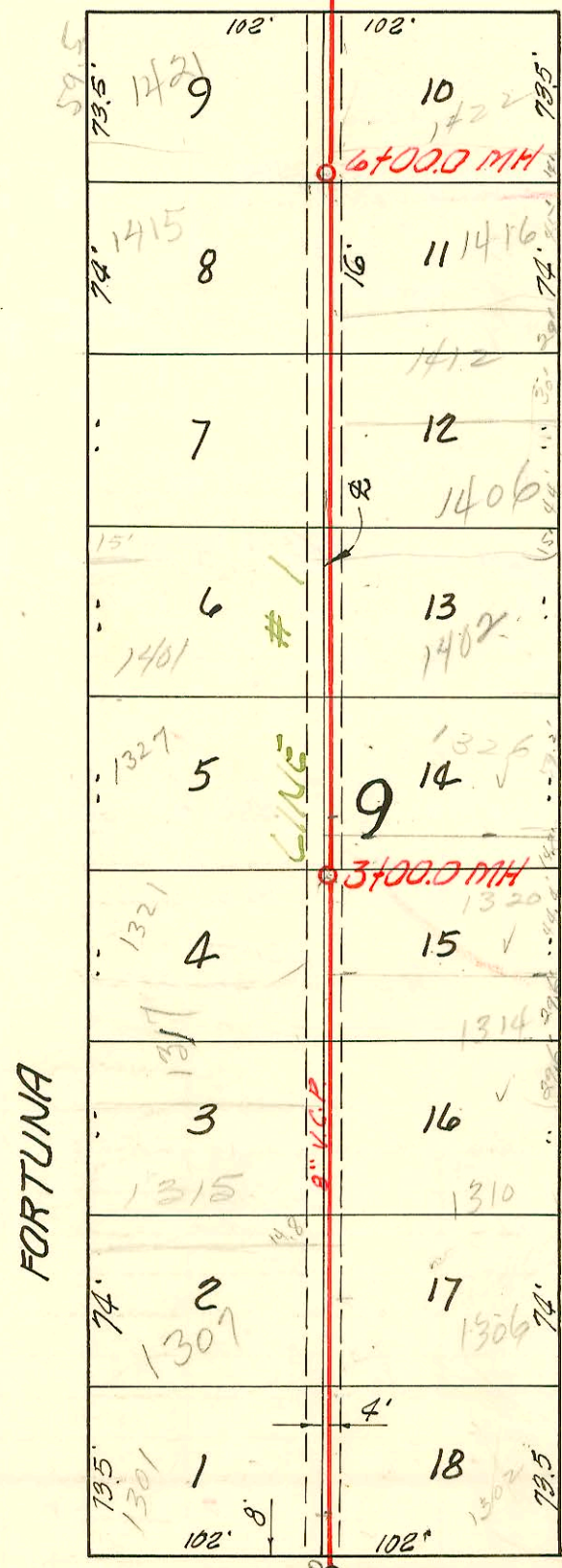


HYDRAULIC AVE.

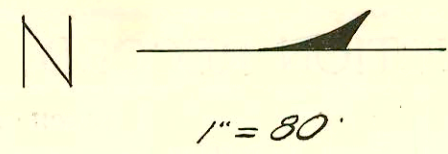


VICTORIA AVE.



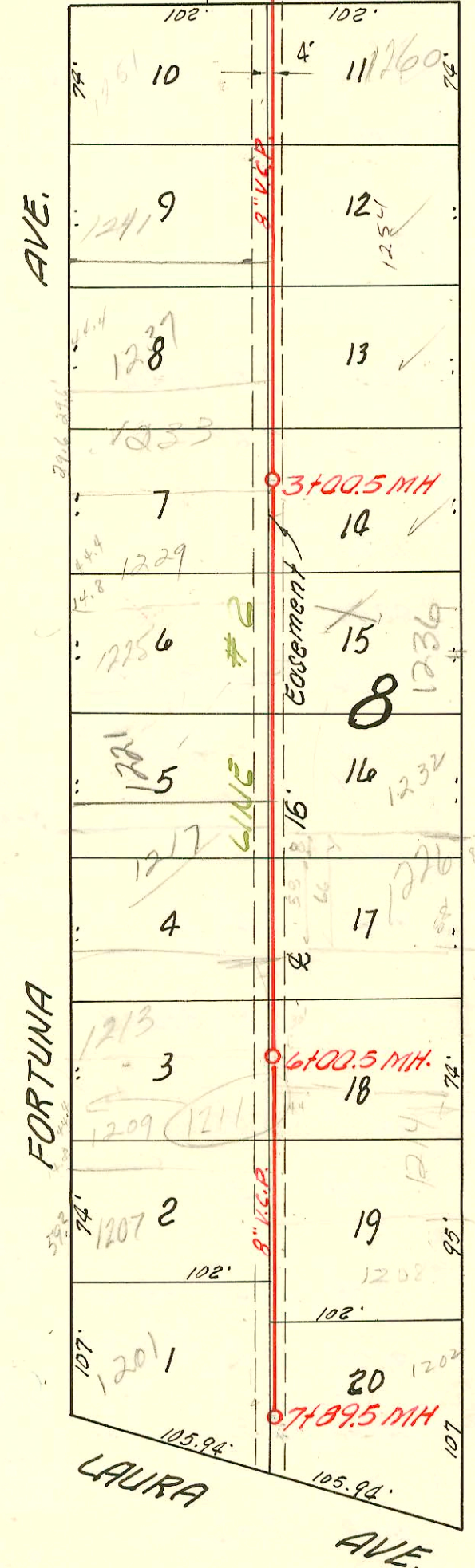
0+00 Existing MH. PATTIE AVE.

1221 E Galena School  
no other records of conn.  
add. to school tied back to  
old sewer line



0+00 Existing MH  
Beg. private S.S. to South

PATTIE AVE



LAURA AVE.

NOTE:  
Install 4" to 6" increasers and  
6" trap on each wye.

Rep- 2001-00182-1/25/01- 1201 E Fortuna - McClung - 4" SCH 40  
city repair - 6' Preco 47'E of MH 7+89.5 (7+42.5) Trap installed  
1 TWIN CO; 1-6X4 BUSH PVC; 1-Fernco to CI @ house

LAT. 10, SUB. 1, S. S. 22  
BUILDERS CONST. INC., SEPT. 13, 1955  
BK. NO. K-32, PROJ. NO. C 24-35

1301 E Galena  
New Church  
Trap Area  
88 A

OH's address to  
3001 New  
1221 Galena  
1221 Spec. Fed. Cent. with ex. set 317-00 see note previous page

TRAP AREA

CONSTRUCTION RECORD

SERVICE RECORD

STATION	ELEVATION		Depth	MANHOLE	4-INCH "Y" BRANCHES		No. of Permit		House Number		DATE OF PERMITS	
	Ground	Grade			North West	South East	North West	South East	North West	South East	North West	South East
0+0	92.40	84.53	7.9	0+00 Exist'g MH.	0+30.0	0+33.0	5466	#999	1301	1302	10-15-57	8-18-80
1+0	92.0	84.63	7.4		1+15.0	1+18.0	7993	#6691	1307	1306	9-4-58	10-14-55
					-1+74.0	1+77.0	7427	6693	1312	1310	7-18-58	10-14-55
2+0	91.4	84.73	6.7		2+33.5	2+36.5	7431	#6694	1401	1314	7-18-58	10-14-55
					2+90.0	2+93.0	661405	6695	1320	1320 R	6-3-77	7-30-96
3+00	91.1	84.83	6.3	3+00.0	3+52.0	3+55.0	661512	6696	1327	1326	6-9-77	10-14-55
4+0	90.8	84.93	5.9		4+10.0	4+13.0		4256	1407	1402		4-4-57
					4+69.0	4+72.0	B1625	7131	1407	1406	3-12-64	6-2-58
5+0	90.2	85.03	5.2		5+28.0	5+31.0		#9122	1412	1412		1-16-59
					5+87.5	5+90.5		7130	1416	1416		6-2-58
6+00	88.5	85.13	3.4	6+00.0	6+39.5	6+42.5	7337	626099	1431	1427	6-23-58	1-14-60
7+0	89.0	85.23	3.8		7+46.0	7+49.0	17980		1501	1500		3-24-87
8+0	88.4	85.33	3.1		8+20.0	8+23.0	16060		1507	1507		4-4-86
					8+91.0	8+94.0	16061		1509	1509		4-4-86
9+0	88.5	85.43	3.1	9+02.0	9+17.0	9+21.0	16502	16536	1515	1514	3-13-85	6-26-86
	88.5	85.43	3.1	9+02.0	9+27.5	9+32.0	18203	16537	1517	1517	3-13-85	6-26-86
					9+67.0	9+70.0	11506	15004	1521	1520	7-19-84	11-7-85
10+0	88.5	85.53	3.0		10+50.0	10+53.0	8352	14206	1527	1526	6-13-83	7-9-85
					10+41.0	10+44.0	8353	14209	1528	1528	6-13-83	7-9-85
11+0	88.7	85.63	3.1		11+21.0	11+24.0	1115	13204	1601	1601	3-31-83	3-13-85
					11+50.0	11+53.0	7777	13205	1603	1604	3-31-83	3-13-85
					11+89.0	11+92.0	7778	10598	1607	1608	3-31-83	4-10-84
12+0	88.7	85.73	3.0	12+02.0	12+32.1	12+35.5	7778		1609	1610	3-31-83	4-10-84
13+0	88.8	85.83	3.0		13+13.5	13+17.0	7205		1621	1621	12-20-82	
	89.0	85.90	3.1	13+71.5	13+37.0	13+39.0						

Line #2

Private S.S. at Partic of Galena W. B. Carter, March 1956 Bk. No. K-32

0+0	90.8	84.11	6.7	0+00 Exist'g MH								
1+0	90.4	84.21	6.2				2002		1221		1-11-02	Notes off page
2+0	90.4	84.31	6.1				2000		Galena		6/11/00	
	90.1	84.32	5.8	2+09.5 (6" stub W.)			61433					

# 290 Jap into Manhole 1315 Galena Moore Robertson 3-21-56  
 5291 - 6 inch pipe - 1422 Galena - 9-27-57  
 2085 7996 2000 pipe 1201 Fortuna 9-4-58 7440  
 11369 600 pipe 1226 Galena Fudrich 9-15-59 5103.5  
 17000 - 1415 Fortuna - Gene Brodie - 4-23-63 (5+85)  
 21297 - 1317 Fortuna - James H. H. 2-23-66 (2+43) (repair at Main only - 1'4" tap + 5' 4" ABS)  
 B5559 - tap - 1214 Galena - V. Appelt 5-4-66 (6+60.)

# 11507 - 1523 E. Fortuna - 7-19-84 Gold Thompson - (10+100) 660 E  
 # 15003 - 1522 Galena - 11-7-85 - Glemann (10+00.57) Jap