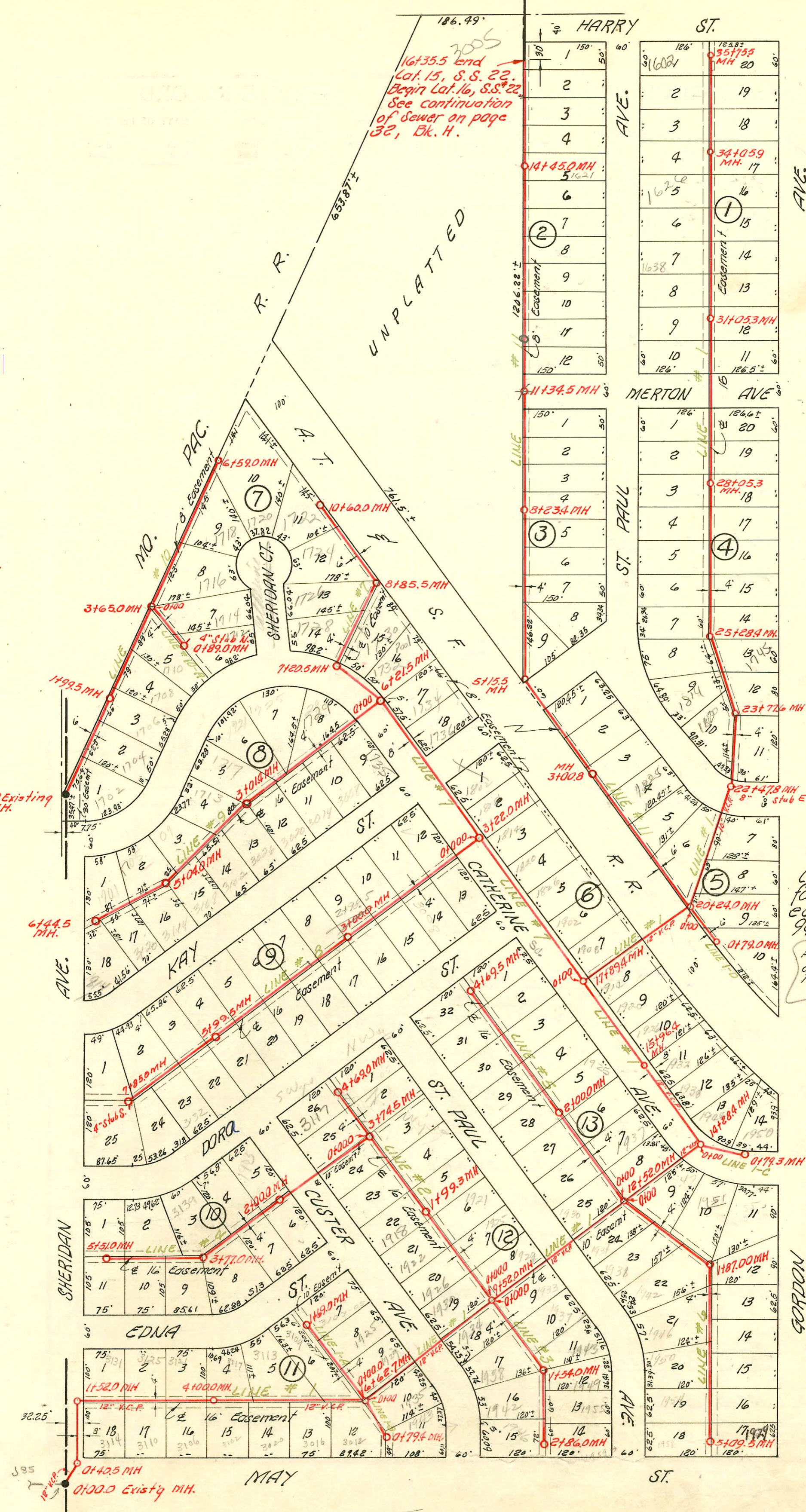


H 90 A



16+35.5 end  
Lat. 15, S. S. 22.  
Begin Lat. 16, S.S. 22.  
See continuation  
of Sewer on page  
32, Bk. H.

AVE.

HARRY ST.

ST. PAUL

MERTON AVE.

UNPLATTED

MO. PAC.  
SHERIDAN CT.

KAY ST.

CATHERINE ST.

DORA ST.

CUSTER ST.

EDNA ST.

MAY ST.

1" = 150'



NOTE:  
Construction record  
for this project recorded  
on pages 90 to  
94 inclusive.  
All sewer laterals are  
8" V.C.P. except where  
noted.

LAT. 15, S. S. 22

W. B. CARTER CONST. CO. INC., SEPT. 17, 1955

BK NO. K-33

PROJ. NO. C25-48

CONSTRUCTION RECORD

SERVICE RECORD

STATION	ELEVATION		Depth	MANHOLE	4-INCH "Y" BRANCHES		No. of Permit		House Number		DATE OF PERMITS	
	Ground	Grade			North West	South East	North West	South East	North West	South East	North West	South East
Line # 1 Continued	29+0	107.4	100.93	6.5								
					29+09.0	29+06.0	#6461	#6482	1702 St. Paul	1703 Gordon	9-16-55	9-16-55
	30+0	106.9	101.13	5.8								
					30+31.0	30+28.0	#6460	#6481	1656 St. Paul	1657 Gordon	9-16-55	9-16-55
					30+88.5	30+85.5	#6459	#6480	1650 St. Paul	1651 Gordon	9-16-55	9-16-55
	31+0	107.0	101.33	5.7	31+05.3							
					31+52.5	31+49.5	#6458	#6479	1644 St. Paul	1645 Gordon	9-16-55	9-16-55
	32+0	107.1	101.53	5.6								
					32+13.0	32+10.0	#6457	#6478	1650 St. Paul	1657 Gordon	9-16-55	9-16-55
					32+73.5	32+70.5	#6456	#6477	1650 St. Paul	1651 Gordon	9-16-55	9-16-55
	33+0	109.0	101.73	7.3								
					33+31.0	33+28.0	#6455	#6476	1626 St. Paul	1627 Gordon	9-16-55	9-16-55
					33+92.0	33+89.0	#6454	#6475	1620 St. Paul	1621 Gordon	9-16-55	9-16-55
	34+0	107.9	101.93	6.0	34+05.9							
					34+52.5	34+49.5	#6453	#6474	1614 St. Paul	1615 Gordon	9-16-55	9-16-55
	35+0	107.5	102.13	5.4								
					35+09.5	35+06.5	#6452	#6473	1608 St. Paul	1609 Gordon	9-16-55	9-16-55
					35+67.5	35+64.5	#6451	#6472	1602 St. Paul	1603 Gordon	9-16-55	9-16-55
Line # 1-A	0+0	106.2	100.80	5.4	0+00=6+62.7 in Line #1	North	South					
						0+19.0		9421	1922 S. Custer		2-27-59	
						0+85.0		9420	1925 S. Custer		2-27-59	
	1+0	101.20										
		101.48			1+48.5	1+51.5	220414	060180	3109 Dana	3107-05 Dana	8-7-70	3-4-77
Line # 1-B	0+0	106.2	100.78	5.4	0+00=6+62.7 in Line #1	NORTH	SOUTH					
						0+19.0	0+22.0					
						0+72.0		C18124	1943 S. Custer		2-25-70	
	1+0	106.2	101.12	5.1	0+79.4							
Line # 1-C	0+0	105.7	100.80	4.9	0+00=14+28.4 in Line #1		East					
							0+27.0					
							0+70.0	#7141	1950 Custer			1-2-30-55
	1+0	105.0	101.12	3.9	0+79.3							
Line # 1-D	0+0	105.3	100.62	4.7	0+00=20+24.0 in Line #1		East					
							0+22.0					
							0+71.0	16583 #6495	1921 S. Gordon		7-9-86	12-23-55
	1+0	105.0	100.92	4.1	0+79.0							
Line # 2	0+0	105.1	99.10	6.0	0+00=9+52.0 in Line #1	North	South	North	South	North	South	
						0+20.5	0+23.5	7977	9425	1937 St. Paul	1938 Custer	8-28-54
						0+88.0	0+91.0	7976	9424	1938 St. Paul	1939 Custer	8-28-54
	1+0	105.4	99.50	5.9		1+46.0	1+49.0	#17010 7975	9423	1921 S. St. Paul	1922 Custer	9-22-86
						1+99.3						2-27-59
	2+0	105.9	99.90	6.0		2+07.0	2+10.0	2000-02147 765		1919 A Custer	see next pg	9-28-00
						2+70.0	2+73.0	764		1914 Custer		5-11-56
	3+0	105.8	100.30	5.5		3+31.0	3+34.0	763		1910 Custer		5-11-56
		106.1	100.60	5.5	3+74.5							
						3+96.0	3+99.0	762		1906 Custer		5-11-56
	4+0	106.1	100.70	5.4		4+00.3	4+57.0	1541		1905 S. St. Paul	10-17-80	
						4+57.0	4+60.0	760		1917 Dana		5-11-56
Line # 3	0+0	105.2	101.20	4.0	0+00=9+52.0 in Line #1	Northeast	Southwest					
						0+20.0	0+23.0	7978	9426	1933 St. Paul	1934 Custer	8-28-54
						0+69.0	0+72.0	7979	9427	1938 St. Paul	1939 Custer	8-28-54
	1+0	105.2	101.60	3.6		1+36.0		9429		1938 St. Paul		2-27-59
		105.1	101.92	3.3	1+54.0							
				3.2		1+82.0	1+85.0		9428	1942 S. Custer		2-27-59
	2+0	105.3	102.10	3.2		2+72.0	2+69.0	C52824	C20870	1946 S. Custer	1959 S. St. Paul	12-15-75
						2+86.0						9-4-70

#761-Top-3105 Dana-R. LaFay-5-11-56  
 #762-Top-1903 St. Paul-R. LaFay-5-11-56 Mike Bratcher  
 #767-Top-1909 St. Paul- " " 5-11-56 #14949 10-16-55 OK  
**NOTE:**  
 #768-Top-1913 St. Paul-R. LaFay-5-11-56  
 #769-Top-1917 St. Paul-R. LaFay-5-11-56  
 Construction record for this project continues on page 92.  
 9422 Top 1935 S. Custer Phisps 3-9-59 40.9  
 9430 Top 1949 S. St. Paul Phisps 3-9-59 1464  
 9431 Top 1903 S. St. Paul Phisps 3-9-59 2127.5

SWR 2001-03046 - 11/30/01 - Reddi Rootr - 4" SCH 40, ITWINCO, 2 Fernco

2000-02147 - 9/28/00 - 1918 CUSTER - DL Tied into 4" clay stubout at house - Replaced entire line - No alley cut  
ITWINCO, 1V45