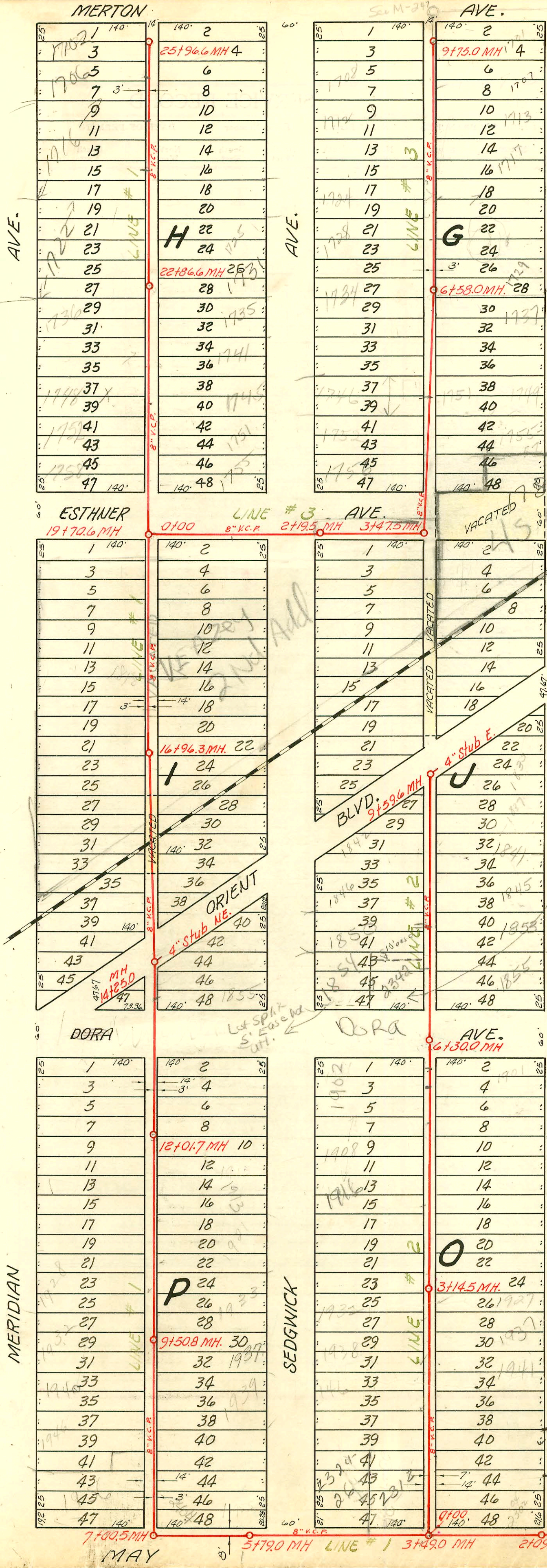




1" = 100'



ST. CLAIR AVE.

Lot Split
 SUB 2002-00028
 10' UTIC ease along NPL
 of 2342 Dora given to
 1854 S. Sedgwick for utilities

LAT. 12, SUB. 3, S. S. 22
 W. B. CARTER CO. INC., DEC. 22, 1955
 BK. NO. K-35, PROJ. NO. C25-43

- See Below 2000-00024 8421 Tap 1937 S. Sedgwick 10-22-54
- 8503 - 6" 8" wye - 1855 S. St. Clair - 10-27-58
- 8504 - 6" 8" wye - 1855 S. St. Clair - 10-27-58
- 9619 - tap 1758 S. Meridian - 3-26-59
- 12173 trailer - 1752 S. Meridian - 1-27-60
- 82332 - 1725 S. Sedgwick - 11-16-64

NOTE:
 Construction Record for this project
 recorded on pages 104 & 105.

2000-00024-1937 S. SEDGWICK - A GOOD PLUMBER - 1/6/64
 Replaced all but lower 3' wye approx. 83' S
 4" SCH 40 (8+6.78)
 2002-00509 - 1716 S Meridian - 2/25/62
 Nelson Piley - 2 Fernco, 4" SCH 40, Replaced
 5' of pipe @ house, ITWINCO

ST. CLAIR

MERTON

ESTHNER

DORA

MAY

AVE.

CONSTRUCTION RECORD

SERVICE RECORD

LINE #2

STATION	ELEVATION		Depth	MANHOLE	4-INCH "Y" BRANCHES		No. of Permit		House Number		DATE OF PERMITS	
	Ground	Grade			North West	South East	North West	South East	North West	South East	North West	South East
0+0	103.6	98.00	5.6	0+00 = 3+490 in Line #1	0+22.0	0+20.0		15437		2302 of May		4-6-62
1+0	103.8	98.30	5.5		0+72.0	0+70.0	C57144				9-16-76	
2+0	103.8	98.60	5.2		1+22.0	1+20.0		#16867		1953 S. St. Clair		3-28-62
					1+73.0	1+71.0		#8281		1945 S. St. Clair		2-17-64
3+0	103.8	98.90	4.9		2+19.0	2+17.0	B195		193 P. Sedgwick		9-25-62	
					2+71.5	2+69.5	16508		1902 S. Sedgwick		12-20-62	
	104.0	98.94	5.1	3+14.5		3+09.0		#1523		1927 S. St. Clair		7-20-56
					3+20.0							
					3+69.5							
4+0	104.2	99.20	5.0			3+89.0				1923 S. St. Clair		6-1-59
					4+21.5	4+19.5		202-152	1916 S. Sedgwick		2-25-72	
					4+71.0	4+69.0	624	C19831	1908 S. Sedgwick	1915 S. St. Clair	11-12-58	6-25-70
5+0	103.8	99.50	4.3		5+21.0	5+19.0						
					5+70.5	5+68.5	978	C22978	1902 S. Sedgwick	1901 S. St. Clair	11-25-83	2-17-71
6+0	104.5	99.80	4.7									
	104.2	99.89	4.3	6+30.0	6+84.0	6+82.0		C60430		1859 S. St. Clair		3-24-77
7+0	104.7	100.10	4.6		7+22.0	7+20.0		C17515	1839 S. St. Clair	8-15-95	10-31-69	
					7+74.0	7+72.0		C41706	1853 S. St. Clair	10-22-01	5-2-74	
8+0	104.9	100.40	4.5		8+24.0	8+22.0	69173	C53765	1846 S. Sedgwick	1845 S. St. Clair	10-31-78	2-17-76
					8+74.0	8+72.0	#3507	6431	1842 S. Sedgwick	1841 S. St. Clair	6-16-81	5-14-88
9+0	105.0	100.70	4.3			9+22.0		C36461	1841 S. St. Clair		12-26-70	
	104.6	100.88	3.7	9+59.6	4" stub	E. 9+39.2		269326	1838 S. St. Clair		7-12-78	

LINE #3

0+0	104.8	100.97	3.8	0+00 = 19+706 in Line #1		South						
1+0	104.7	101.07	3.6									
2+0	104.8	101.17	3.6									
	104.8	101.19	3.6	2+19.5								
3+0	104.8	101.27	3.5									
	104.8	101.32	3.5	3+47.5								
4+0	105.0	101.47	3.5		West	East						
					4+18.0	4+16.0		C31664	1756 S. Sedgwick		4-17-72	
					4+71.0	4+69.0		C31052	1755 S. Sedgwick	1752 S. St. Clair	3-20-72	10-25-78
5+0	104.8	101.57	3.2		5+20.0	5+18.0		C33628	1746 S. Sedgwick	1751 S. St. Clair	6-19-72	3-25-85
					5+55.0	5+53.0						6-8-62
					5+89.0							5-19-56
6+0	105.2	101.67	3.5		6+34.0	6+32.0		C10015	1737 S. Sedgwick	1737 S. St. Clair	7-16-87	8-13-68
	105.2	101.73	3.5	6+58.0		6+65.0		#1235				1-12-56
7+0	105.7	101.77	3.9		7+09.4			B4428	1724 S. Sedgwick	1724 S. St. Clair	10-28-65	
					7+13.5	7+11.5		#1213	1720 S. Sedgwick	1720 S. St. Clair	9-6-56	4-5-56
					7+62.0	7+60.0		11831	1724 S. Sedgwick	1724 S. St. Clair	11-10-59	1-25-56
8+0	105.2	101.87	3.3		8+14.0	8+12.0		C34359	1717 S. Sedgwick	1717 S. St. Clair		8-17-72
					8+65.0	8+63.0		2989	1713 S. Sedgwick	1713 S. St. Clair	11-7-56	4-30-59
9+0	106.0	101.97	4.0		9+14.5	9+12.5		C5727	1708 S. Sedgwick	1707 S. St. Clair	11-20-57	11-8-79
					9+66.0	9+64.0		C14854		1701 S. St. Clair		7-9-69

12219-2220 - Inlet - 2329 Weston - Set 6" on 8" wye - 9/6/56 - Planning

n/c 4861 - 1726 S. Sedgwick - 12-8-81 Jim Morris (17+18.0) (257.0 SDR 9+75.0 man)

4519 - Top - 1920 - 22-248. Sedgwick - Date - 5-27-57
 #15874 - Top - 1941 S. St. Clair - 7-12-62 - Ted Jones (1491)
 #16264 - Top - 1946 S. Sedgwick - 10-12-62 - Bradford (1454) R
 1902 S. Sedgwick (93-5093-7) (3-18-93) 4" SDR 35 - Tied into existing 4" SDR 35 line that serves existing house to front of lot. Will be sealed off when new house is occupied. (4" trap installed)

Sur 200 03166 - 12/13/01 1854 s. ^{NIC} sedgwick betzenkath: