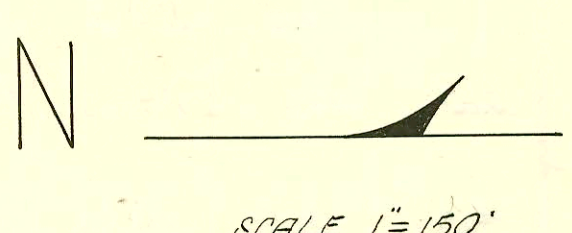
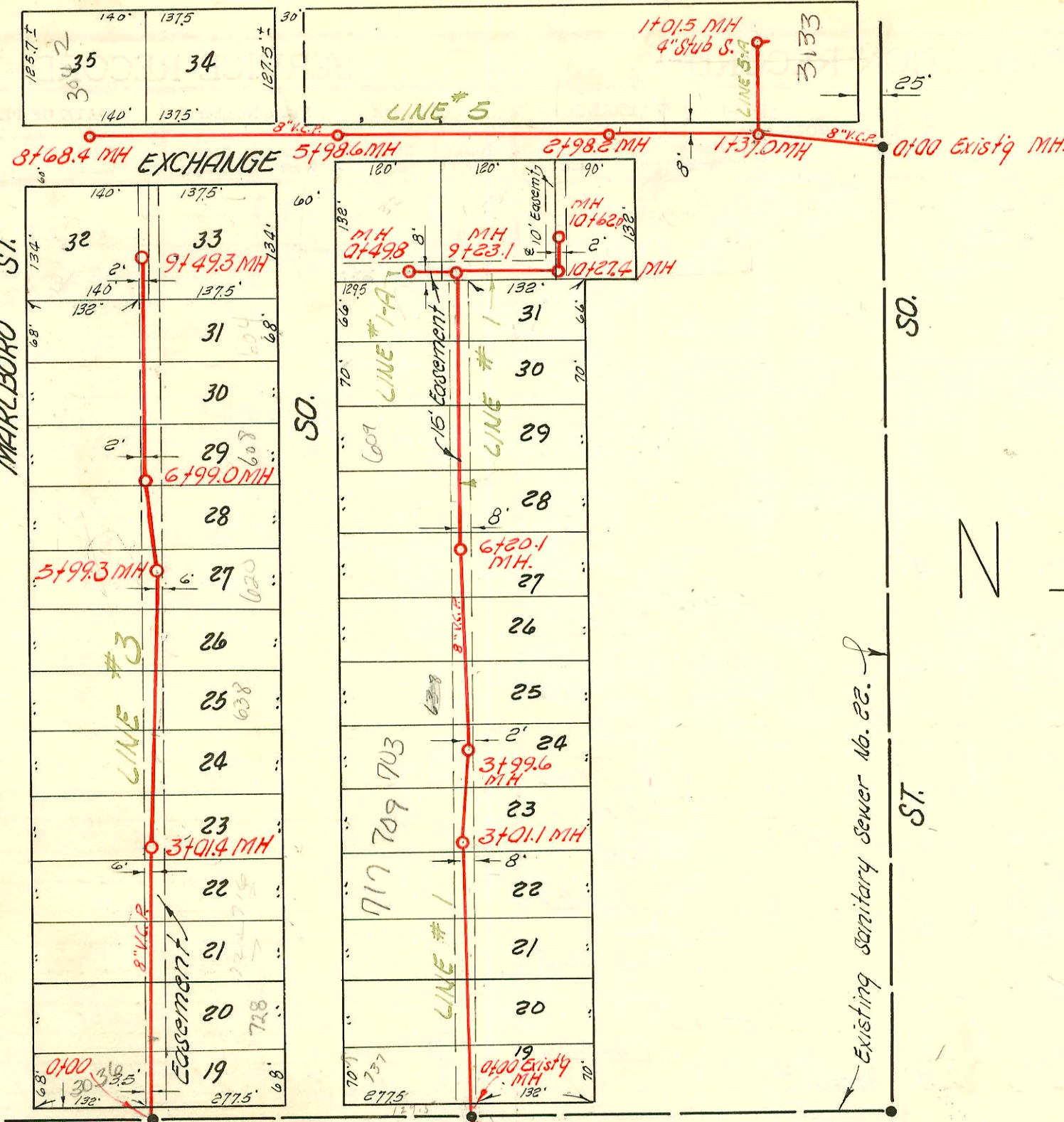
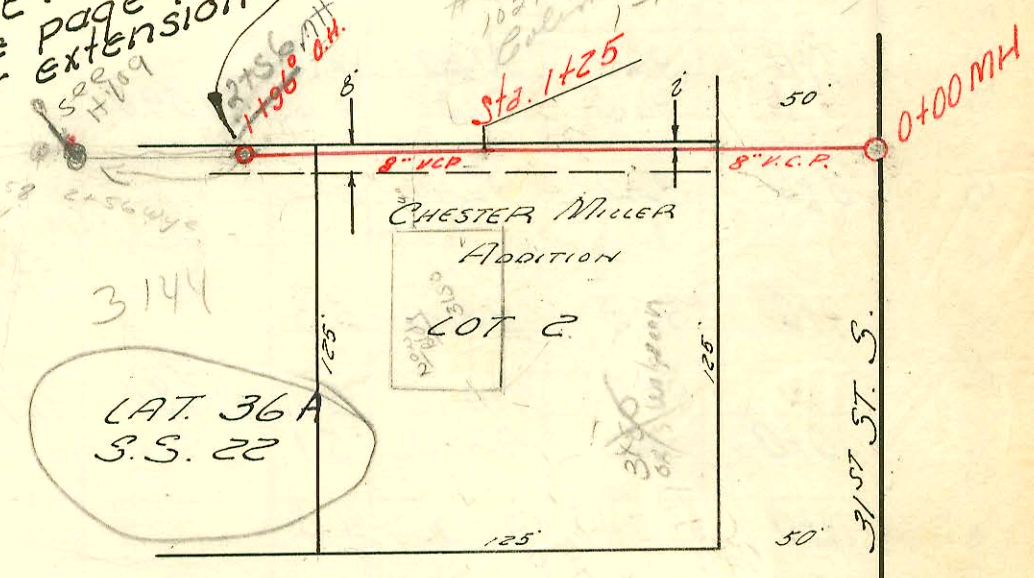


3022  
3030  
3031  
3032  
3033  
3034  
3035  
3036  
3037  
3038  
3039  
3040  
3041  
3042  
3043  
3044  
3045  
3046  
3047  
3048  
3049  
3050  
3051  
3052  
3053  
3054  
3055  
3056  
3057  
3058  
3059  
3060  
3061  
3062  
3063  
3064  
3065  
3066  
3067  
3068  
3069  
3070  
3071  
3072  
3073  
3074  
3075  
3076  
3077  
3078  
3079  
3080  
3081  
3082  
3083  
3084  
3085  
3086  
3087  
3088  
3089  
3090  
3091  
3092  
3093  
3094  
3095  
3096  
3097  
3098  
3099  
3100  
3101  
3102  
3103  
3104  
3105  
3106  
3107  
3108  
3109  
3110  
3111  
3112  
3113  
3114  
3115  
3116  
3117  
3118  
3119  
3120  
3121  
3122  
3123  
3124  
3125  
3126  
3127  
3128  
3129  
3130  
3131  
3132  
3133  
3134  
3135  
3136  
3137  
3138  
3139  
3140  
3141  
3142  
3143  
3144  
3145  
3146  
3147  
3148  
3149  
3150  
3151  
3152  
3153  
3154  
3155  
3156  
3157  
3158  
3159  
3160  
3161  
3162  
3163  
3164  
3165  
3166  
3167  
3168  
3169  
3170  
3171  
3172  
3173  
3174  
3175  
3176  
3177  
3178  
3179  
3180  
3181  
3182  
3183  
3184  
3185  
3186  
3187  
3188  
3189  
3190  
3191  
3192  
3193  
3194  
3195  
3196  
3197  
3198  
3199  
3200  
3201  
3202  
3203  
3204  
3205  
3206  
3207  
3208  
3209  
3210  
3211  
3212  
3213  
3214  
3215  
3216  
3217  
3218  
3219  
3220  
3221  
3222  
3223  
3224  
3225  
3226  
3227  
3228  
3229  
3230  
3231  
3232  
3233  
3234  
3235  
3236  
3237  
3238  
3239  
3240  
3241  
3242  
3243  
3244  
3245  
3246  
3247  
3248  
3249  
3250  
3251  
3252  
3253  
3254  
3255  
3256  
3257  
3258  
3259  
3260  
3261  
3262  
3263  
3264  
3265  
3266  
3267  
3268  
3269  
3270  
3271  
3272  
3273  
3274  
3275  
3276  
3277  
3278  
3279  
3280  
3281  
3282  
3283  
3284  
3285  
3286  
3287  
3288  
3289  
3290  
3291  
3292  
3293  
3294  
3295  
3296  
3297  
3298  
3299  
3300  
3301  
3302  
3303  
3304  
3305  
3306  
3307  
3308  
3309  
3310  
3311  
3312  
3313  
3314  
3315  
3316  
3317  
3318  
3319  
3320  
3321  
3322  
3323  
3324  
3325  
3326  
3327  
3328  
3329  
3330  
3331  
3332  
3333  
3334  
3335  
3336  
3337  
3338  
3339  
3340  
3341  
3342  
3343  
3344  
3345  
3346  
3347  
3348  
3349  
3350  
3351  
3352  
3353  
3354  
3355  
3356  
3357  
3358  
3359  
3360  
3361  
3362  
3363  
3364  
3365  
3366  
3367  
3368  
3369  
3370  
3371  
3372  
3373  
3374  
3375  
3376  
3377  
3378  
3379  
3380  
3381  
3382  
3383  
3384  
3385  
3386  
3387  
3388  
3389  
3390  
3391  
3392  
3393  
3394  
3395  
3396  
3397  
3398  
3399  
3400  
3401  
3402  
3403  
3404  
3405  
3406  
3407  
3408  
3409  
3410  
3411  
3412  
3413  
3414  
3415  
3416  
3417  
3418  
3419  
3420  
3421  
3422  
3423  
3424  
3425  
3426  
3427  
3428  
3429  
3430  
3431  
3432  
3433  
3434  
3435  
3436  
3437  
3438  
3439  
3440  
3441  
3442  
3443  
3444  
3445  
3446  
3447  
3448  
3449  
3450  
3451  
3452  
3453  
3454  
3455  
3456  
3457  
3458  
3459  
3460  
3461  
3462  
3463  
3464  
3465  
3466  
3467  
3468  
3469  
3470  
3471  
3472  
3473  
3474  
3475  
3476  
3477  
3478  
3479  
3480  
3481  
3482  
3483  
3484  
3485  
3486  
3487  
3488  
3489  
3490  
3491  
3492  
3493  
3494  
3495  
3496  
3497  
3498  
3499  
3500  
3501  
3502  
3503  
3504  
3505  
3506  
3507  
3508  
3509  
3510  
3511  
3512  
3513  
3514  
3515  
3516  
3517  
3518  
3519  
3520  
3521  
3522  
3523  
3524  
3525  
3526  
3527  
3528  
3529  
3530  
3531  
3532  
3533  
3534  
3535  
3536  
3537  
3538  
3539  
3540  
3541  
3542  
3543  
3544  
3545  
3546  
3547  
3548  
3549  
3550  
3551  
3552  
3553  
3554  
3555  
3556  
3557  
3558  
3559  
3560  
3561  
3562  
3563  
3564  
3565  
3566  
3567  
3568  
3569  
3570  
3571  
3572  
3573  
3574  
3575  
3576  
3577  
3578  
3579  
3580  
3581  
3582  
3583  
3584  
3585  
3586  
3587  
3588  
3589  
3590  
3591  
3592  
3593  
3594  
3595  
3596  
3597  
3598  
3599  
3600  
3601  
3602  
3603  
3604  
3605  
3606  
3607  
3608  
3609  
3610  
3611  
3612  
3613  
3614  
3615  
3616  
3617  
3618  
3619  
3620  
3621  
3622  
3623  
3624  
3625  
3626  
3627  
3628  
3629  
3630  
3631  
3632  
3633  
3634  
3635  
3636  
3637  
3638  
3639  
3640  
3641  
3642  
3643  
3644  
3645  
3646  
3647  
3648  
3649  
3650  
3651  
3652  
3653  
3654  
3655  
3656  
3657  
3658  
3659  
3660  
3661  
3662  
3663  
3664  
3665  
3666  
3667  
3668  
3669  
3670  
3671  
3672  
3673  
3674  
3675  
3676  
3677  
3678  
3679  
3680  
3681  
3682  
3683  
3684  
3685  
3686  
3687  
3688  
3689  
3690  
3691  
3692  
3693  
3694  
3695  
3696  
3697  
3698  
3699  
3700  
3701  
3702  
3703  
3704  
3705  
3706  
3707  
3708  
3709  
3710  
3711  
3712  
3713  
3714  
3715  
3716  
3717  
3718  
3719  
3720  
3721  
3722  
3723  
3724  
3725  
3726  
3727  
3728  
3729  
3730  
3731  
3732  
3733  
3734  
3735  
3736  
3737  
3738  
3739  
3740  
3741  
3742  
3743  
3744  
3745  
3746  
3747  
3748  
3749  
3750  
3751  
3752  
3753  
3754  
3755  
3756  
3757  
3758  
3759  
3760  
3761  
3762  
3763  
3764  
3765  
3766  
3767  
3768  
3769  
3770  
3771  
3772  
3773  
3774  
3775  
3776  
3777  
3778  
3779  
3780  
3781  
3782  
3783  
3784  
3785  
3786  
3787  
3788  
3789  
3790  
3791  
3792  
3793  
3794  
3795  
3796  
3797  
3798  
3799  
3800  
3801  
3802  
3803  
3804  
3805  
3806  
3807  
3808  
3809  
3810  
3811  
3812  
3813  
3814  
3815  
3816  
3817  
3818  
3819  
3820  
3821  
3822  
3823  
3824  
3825  
3826  
3827  
3828  
3829  
3830  
3831  
3832  
3833  
3834  
3835  
3836  
3837  
3838  
3839  
3840  
3841  
3842  
3843  
3844  
3845  
3846  
3847  
3848  
3849  
3850  
3851  
3852  
3853  
3854  
3855  
3856  
3857  
3858  
3859  
3860  
3861  
3862  
3863  
3864  
3865  
3866  
3867  
3868  
3869  
3870  
3871  
3872  
3873  
3874  
3875  
3876  
3877  
3878  
3879  
3880  
3881  
3882  
3883  
3884  
3885  
3886  
3887  
3888  
3889  
3890  
3891  
3892  
3893  
3894  
3895  
3896  
3897  
3898  
3899  
3900  
3901  
3902  
3903  
3904  
3905  
3906  
3907  
3908  
3909  
3910  
3911  
3912  
3913  
3914  
3915  
3916  
3917  
3918  
3919  
3920  
3921  
3922  
3923  
3924  
3925  
3926  
3927  
3928  
3929  
3930  
3931  
3932  
3933  
3934  
3935  
3936  
3937  
3938  
3939  
3940  
3941  
3942  
3943  
3944  
3945  
3946  
3947  
3948  
3949  
3950  
3951  
3952  
3953  
3954  
3955  
3956  
3957  
3958  
3959  
3960  
3961  
3962  
3963  
3964  
3965  
3966  
3967  
3968  
3969  
3970  
3971  
3972  
3973  
3974  
3975  
3976  
3977  
3978  
3979  
3980  
3981  
3982  
3983  
3984  
3985  
3986  
3987  
3988  
3989  
3990  
3991  
3992  
3993  
3994  
3995  
3996  
3997  
3998  
3999  
4000



NOTE:  
Construction Record booked on  
pages 108, 109 and 110.

NOTE:  
see page 109  
for extension



2000-01816  
97-0559-20701 9-11-97 3150 S. Seneca  
Walgreen-City Tap 102' S. of MH-4' sh 40  
slo at ms mt + 3' from Main

2000-00465-3150 S. Seneca - Boardman Ent - 4" PVC 40, New 4" wye  
6' S of MH 1725 (1717) WYE PREV. UNUSED, 1725, 1727

LAT. 5, SUB. 4, S. S. No 22

BUILDERS CONST. INC., JAN. 19, 1956  
BK. NO. K-40, PROJ. NO. C25-61

CONSTRUCTION RECORD

SERVICE RECORD

Line #1

Line #1-A

Line #2

STATION	ELEVATION		Depth	MANHOLE	4-INCH "Y" BRANCHES		No. of Permit		House Number		DATE OF PERMITS	
	Ground	Grade			North West	South East	North West	South East	North West	South East	North West	South East
0+0	95.9	88.54	7.4	0+00 Exist'g MH								
0+03		Begin project			0+27.4		#7486		181W 827W 31st			2-24-56
1+0	96.2	88.74	7.5		0+91.8		#7466					2-23-56
					1+63.5		#7378		723W 30th			2-13-56
2+0	94.6	88.94	5.7		2+42.5		#7375	2552 6016	117W 30th	117 35th		2-13-56
3+0	94.8	89.14	5.7	3+01.1	3+13.6		#7366		707W 30th			2-9-56
					3+79.6		#7367		703W 30th			2-2-56
4+0	95.2	89.34	5.9	3+99.6	4+49.4		#7368		623W 30th			2-10-56
5+0	95.1	89.54	5.6		5+20.0		#7366		627W 30th			1-30-56
					5+85.5		#7306		621W 30th			1-31-56
6+0	95.5	89.74	5.8		6+59.8	6+61.8	#7305		615W 30th			1-21-56
	95.4	89.78	5.6	6+20.1	7+27.6	7+29.6	#7304		613W 30th			1-31-56
7+0	95.8	89.94	5.9		7+95.6	7+98.6	#7295		603W 30th			1-30-56
8+0	95.6	90.14	5.5		8+71.0		#7105		541W 30th			3-2-56
9+0	95.6	90.34	5.3		9+23.1							
	95.6	90.38 out 90.49 in	5.2 5.1			Y East						
10+0	95.7	90.64	5.1		10+27.4							2-14-56
	95.6	90.69 out 90.78 in	4.9 4.8			Y South						
	95.9	90.86	5.0		10+62.0		#7420		3133 4th			2-20-56
Line #1-A 0+0	95.9	90.48	5.4	0+00 = 9+23.1 in line #1		Y East						
	95.9	90.58	5.3		0+49.8		#7399		3123W 30th			2-14-56
Line #2 0+0	96.1	88.42	7.7	0+00 Exist'g MH		North SOUTH						
1+0	95.9	88.62	7.3		0+50.3		#7486		805W 30th			2-24-56
2+0	95.9	88.82	7.1		1+40.5		#7379		813W 30th			2-9-56
					2+03.9		#7481		821W 30th			2-24-56
					2+74.6		#7467		729W 31st			2-23-56
3+0	97.0	89.02	8.0		3+47.4		#7365		825W 30th			2-7-56
4+0	96.6	89.22	7.4		4+20.2		#7364		841W 30th			2-7-56
					4+80.3		#7363		905W 30th			2-9-56
5+0	95.4	89.42	6.0	4+97.9	5+56.5		#7362		911W 30th			2-9-56
6+0	95.2	89.62	5.6		6+28.6		#7361		917W 30th			2-9-56
					6+96.9		#7360		925W 30th			2-9-56
7+0	95.8	89.82	6.0		7+62.5		#7359		731W 30th			2-9-56
8+0	95.4	90.02	5.4	8+00.2	8+48.4		#7358		939W 30th			2-9-56
9+0	95.6	90.22	5.4		9+10.9		#7374		1001W 30th			2-7-56
					9+72.7		#7357		1009W 30th			2-7-56
10+0	95.6	90.42	5.2		10+44.8		#7356		1127W 30th			2-9-56
	95.6	90.62	5.0	11+00.0	11+14.0		#7400		703W 30th			2-14-56
					11+96.1	11+94.1	#7355	1585	3113 30th	3132 S Seneca		2-12-56
12+0	95.3	90.82	4.5		12+01.0		14656		3118 S Seneca			9-12-61

CAT. 36 33. 22  
 0+00 94.7 89.50 in 5.2 0+00  
 1+25 95.2 89.75 4.25 PLUGGED IN  
 2000 00 57+ 90.5 1027-26 W 31st  
 1+96.0 (O.H.)  
 1156 mg #1206-1014 W 31st  
 2000 00 54 #11700-1016-12-20 31st  
 #84886 deal 0-1014 W 31st  
 #84887-1014 W 31st  
 13042 Top 3110 + Exchange  
 13766 Top 3130-322 Seneca  
 97-15592-7 9-11-97 3150 S. Seneca  
 116-59  
 6-29-60 (57076)  
 1-13-61 (11477)  
 Todd Pfluy

see pg 109 for drawing