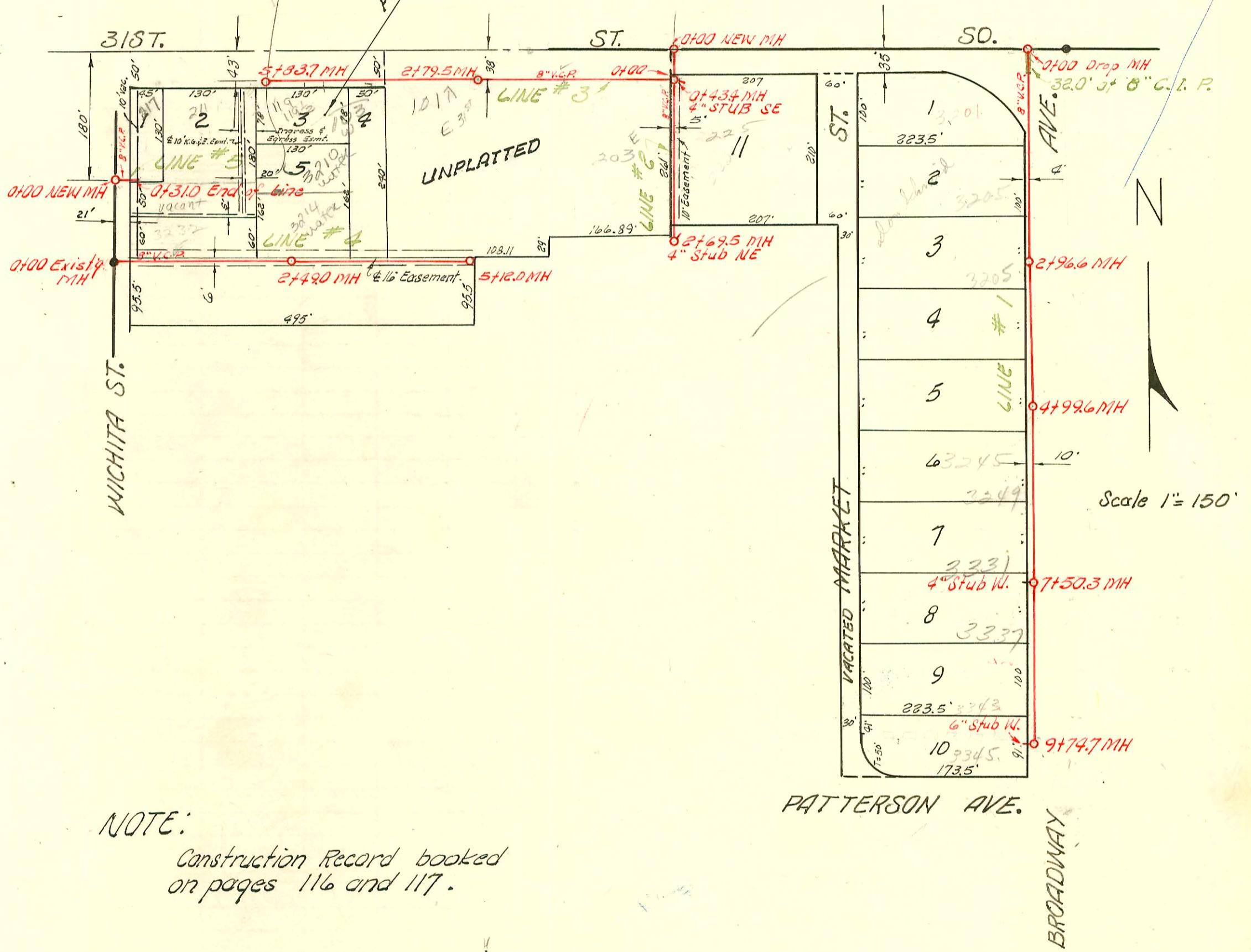


3210 S water  
 can firm by dye test  
 Howe is connected  
 to line & -F. of MH 2+69  
 TEST done on 8/18/09  
 by seven main it  
 ties with any other  
 bids. BK



NOTE:  
 Construction Record booked  
 on pages 116 and 117.

LAT. 14 , S. S. NO. 22

W. B. CARTER CONST. CO. INC., FEB. 16, 1955

BK. NO. K-33

PROJ. NO. C25-36

CONSTRUCTION RECORD

SERVICE RECORD

STATION	ELEVATION		Depth	MANHOLE	4-INCH "Y" BRANCHES		No. of Permit		House Number		DATE OF PERMITS	
	Ground	Grade			North West	South East	North West	South East	North West	South East	North West	South East
Line #1 0+0	92.7	86.50	6.2	0+00 M. H. (5' Dia.) Drop MH								
0+0	Begin	8" C.I.P.										
0+32	End C.I.P.	begin 8" V.C.P.										
1+0	93.5	86.66	6.8		0+93.0							
2+0	93.5	86.82	6.7		1+95.2 2+27.0 2+76.0		#162 C17963		3205 S Broadway		3-7-56 2-11-70	
3+0	93.6	86.98	6.6	2+96.6								
4+0	93.4	87.14	6.3		3+349		8946		3205 S Broadway		12-22-58	
5+0	93.0	87.30	5.7	4+99.6	4+26.9 4+87.5 - 6" wye							
6+0	93.4	87.46	5.9		6" wye 5+32.5 5+68.0		5775 8941		3245 S Broadway 3331 S Broadway		11-29-57 12-19-58	
7+0	94.2	87.62	6.6		6" wye 6+03.7 6+27.8 6+39.0 6+70.0 6+97.5		8801		3249 S Broadway		12-2-58	
8+0	94.4 94.4	87.70 87.78	6.7 6.6	7+50.3	7+02.5 7+75.5 4" stub W.							
9+0	93.7 93.6	87.94 88.06	5.8 5.5	9+74.7	8+15.0 6" wye 8+36.7 6" wye 8+72.5 6" wye 8+94.5		8948 C17963 14307		3337 S Broadway 3337 S Broadway		12-23-58 2-22-70 6-19-60	
Line #2 0+0	92.9	86.72	6.2	5' Dia 0+00 MH								
1+0	92.3	86.80 86.90	5.5 5.4	0+43.4	4" stub SE							
2+0	92.2	86.92	5.3		1+13.4 1+17.9		108 #86374 3900		225 S Broadway		9-22-60 8-13-81	
3+0	92.0	87.12	4.9		2+57.0 2+69.5							
4+0	92.2	87.26	4.9	2+69.5	4" stub NE							
Line #3 0+0	92.3	86.90	5.4	0+00 = 0+43.4 in Line #2		Y-SOUTH						
1+0	92.4	87.30	5.1		0+12.0							
2+0	92.4	87.70	4.7		1+17.9 2+22.2		050328		1012 31st St		7-14-75	
3+0	93.9	88.02	5.9	2+79.5								
4+0	93.4	88.10	5.3		4+10.0 4+63.0							
5+0	93.4	88.90	4.5		5+03.7 5+32.9 5+58.9		15900 14296 14295		103 W 31st St 119-114 1/2 W. 31st St		1-20-65 7-19-85 7-19-85	
6+0	92.9	89.23	3.7	5+83.7			108 B4513		211 W 31st St		11-10-65	
Line #4 0+0	92.4	88.40	4.0	0+00 Existg MH		Y-NORTH						
1+0	92.6	88.60	4.0		0+35.5 0+85.9							
2+0	93.0	88.80	4.2		1+23.4 1+33.9 1+63.8 1+83.9 2+33.9		15966		3232 S Wichita		12-31-57	

Line #4 continues on page 117

See C30556 10631 8" top 3345 S Broadway Dr. Ordinal 6-23-59 MH 9174.7 west side 2-22-72 City of Wichita (Sealed in M.H.)  
 #14167 Private line connection 3202-06 S. Wichita - Reft. Just 5-10-61  
 #15902 top 3343 S Broadway - Earl J. Jones Pkwy - 7-16-62 (8+38.3) Sect of IC 3055 S City - front to 2-22-72  
 B 8200 top 3249 S Broadway - Frederick Pkwy 2-11-64 - trailer