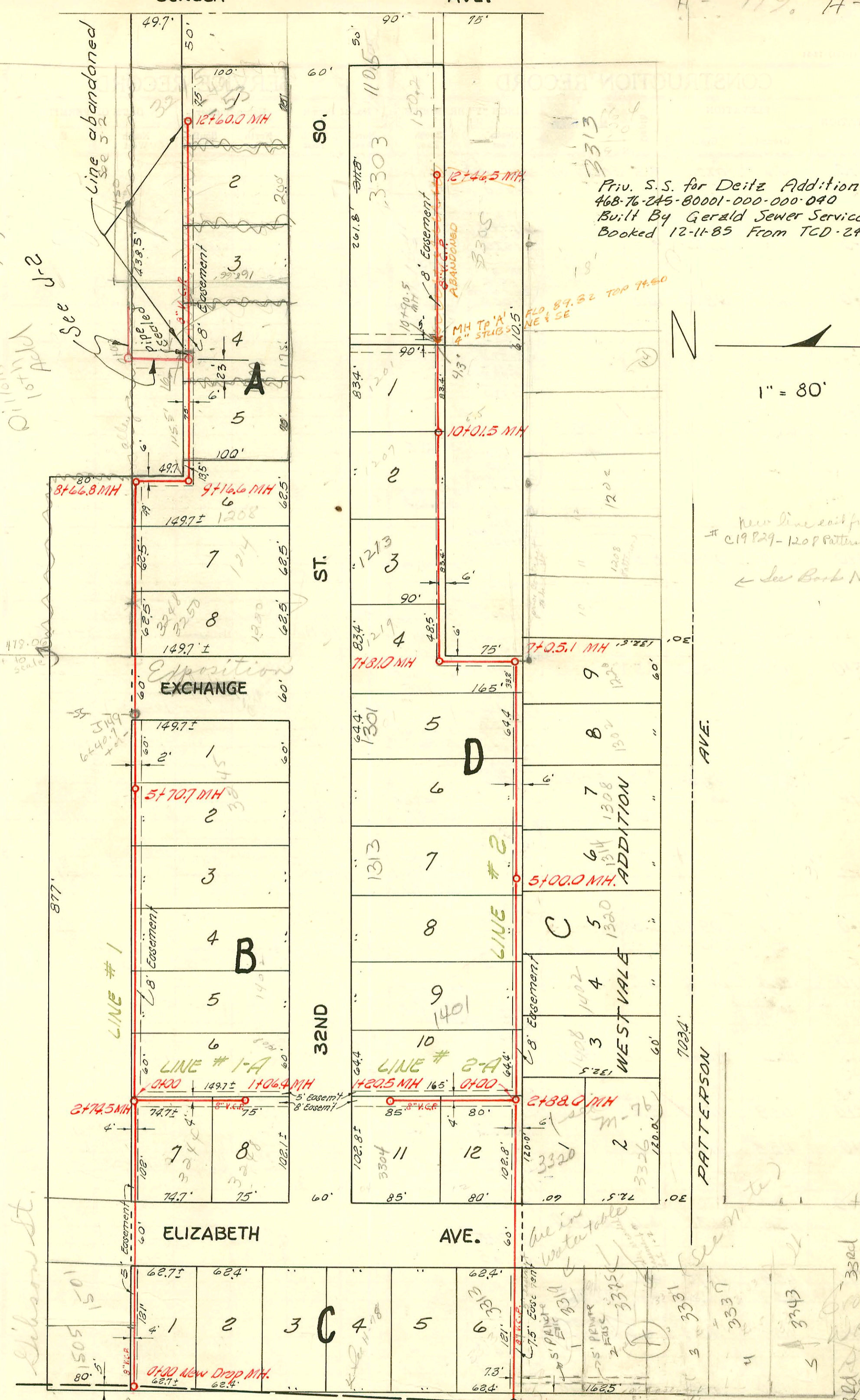
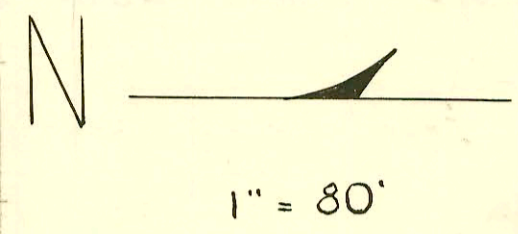


See 3-2  
line abandoned  
See 3-2  
pipe 16" 1555  
3811 S. Seneca  
Replat 8-74  
Oil Well  
1011  
1011

Priv. S.S. for Deitz Addition  
468-76-245-80001-000-000-040  
Built By Gerald Sewer Service  
Booked 12-11-85 From TCD-24



New line east from MH 7405.1  
# C19 P29-1208 Patterson-6-25-76 (1412)  
← See Book M-76

- #9125 top 1505 Elizabeth, C. Frank McCoy 1-16-59 (0+19)
- #11825 top 3244 Elizabeth, Al Skanning 11-9-59 (0+27.4)
- #17459 top 1214 W. 32nd St - Wiles Pkg 7-30-63 (8+03.8)
- #B2833 top 1208 W 32nd St - Van Lippert 2-16-65 (9+19.6)

LAT. 23, SUB 2, S. S. NO. 22  
W. B. CARTER CONST. CO. INC., MAR. 26, 1956  
BK. NO. K-2 PROJ. NO. C25-79

CONSTRUCTION RECORD

SERVICE RECORD

STATION	ELEVATION		Depth	MANHOLE	4-INCH "Y" BRANCHES		No. of Permit		House Number		DATE OF PERMITS	
	Ground	Grade			North West	South East	North West	South East	North West	South East	North West	South East
Line # 1	0+0	94.9	85.00	9.9	0+00 Drop MH							
	1+0	94.6	85.40	9.2								
	2+0	94.1	85.80	8.3								
		94.3	86.10	8.2	2+74.5							
	3+0	94.4	86.20	8.2								
						3+01.5	3+03.5	C18211	1408 X			3-2-70
						3+61.5	3+63.5	C63465	1408 X			10-11-77
	4+0	94.5	86.60	7.9								
						4+19.8	4+21.8					
						4+81.5	4+83.5					
	5+0	94.0	87.00	7.0								
		94.4	87.28	7.1	5+70.7							
						5+40.0	5+42.0					
						5+98.5						
	6+0	94.5	87.40	7.1								
	7+0	94.3	87.80	6.5				C17173	3245 S			12-3-69
						7+20.0	7+22.0					
						7+84.3	7+86.3					
	8+0	94.1	88.20	5.9				13953	30113	3248-50	6-5-65	5-1-70
						8+45.6	8+47.6					
	9+0	93.7	88.46 Out 88.54 in	5.2	8+66.8			13688	3248-50			5-2-65
								13687	3248-50			5-2-65
		94.5	88.74 Out 88.88 in	5.8	9+16.6							
						9+54.0	9+56.0					
	10+0	94.1	89.20	4.9								
						10+30.8	10+32.8					
	11+0	94.5	89.60	4.9								
						11+05.0	10+07.0					
							10+81.5					
	12+0	95.0	90.00	5.0				C9139	3231 S			6-17-68
						12+01.0						1-17-58
		95.2	90.24	5.0	12+60.0							
Line # 1-A	0+0	94.4	86.18	8.2	0+00 = 2+74.5 in Line # 1	"Y" West						
						0+27.0						
						0+86.5		11826				11-9-59
	1+0	94.3	87.20	7.1								
					1+06.4							
Line # 2	0+0	94.1	86.35	7.7	0+00 Exist'g MH	"Y" NORTH "Y" SOUTH						
	1+0	94.5	86.65	7.9								
	2+0	93.7	86.95	6.7								
		93.9	87.21	6.7	2+88.0							
	3+0	93.8	87.25	6.6								
						3+26.5	3+28.5	463				
						3+85.0	3+87.0	464	C26101			8-3-71
	4+0	94.2	87.55	6.6								
						4+49.0	4+51.0	465	C18531			3-26-70
	5+0	93.9	87.85	6.0	5+00.0							
						5+16.0	5+18.0	466	C19639			6-9-70
						5+71.3	5+73.3	467	C18532			3-26-70
	6+0	94.0	88.15	5.9								
						6+48.0	6+50.0	468	C21347			10-14-70
	7+0	94.2	88.45	5.8								
		94.3	88.47 Out 88.56 in	5.8	7+05.1							
		94.5	88.78 Out 88.92 in	5.7 5.6	7+81.0							
	8+0	94.7	88.95	5.7								
						8+64.0	8+66.0	11583				9-28-59
	9+0	94.1	89.25	5.9								
						9+40.8	9+42.8	11581				9-28-59
	10+0	94.1	89.55	5.5	10+01.5							
						10+27.0	10+29.0	11720				10-21-59
	11+0	94.1	89.85	4.3								
						11+03.5	11+05.5	15430				5-4-90
						11+82.0	11+84.0					7-31-55
	12+0	94.5	90.15	4.3								
						12+07.0	12+09.0	C30949				3-13-72
						12+38.5	12+40.5					
		94.6	90.29	4.3	12+46.5							
Line # 2-A	0+0	94.0	87.31	6.7	0+00 = 2+88.0 in Line # 2	"Y" WEST						
						0+18.0						
	1+0	94.1	87.71	6.4								
						1+13.8						
		94.3	87.79	6.5	1+20.5							

Line # 1

This portion of line abandoned

Line # 1-A

Line # 2

Line # 2-A

7+105  
6+50  
55