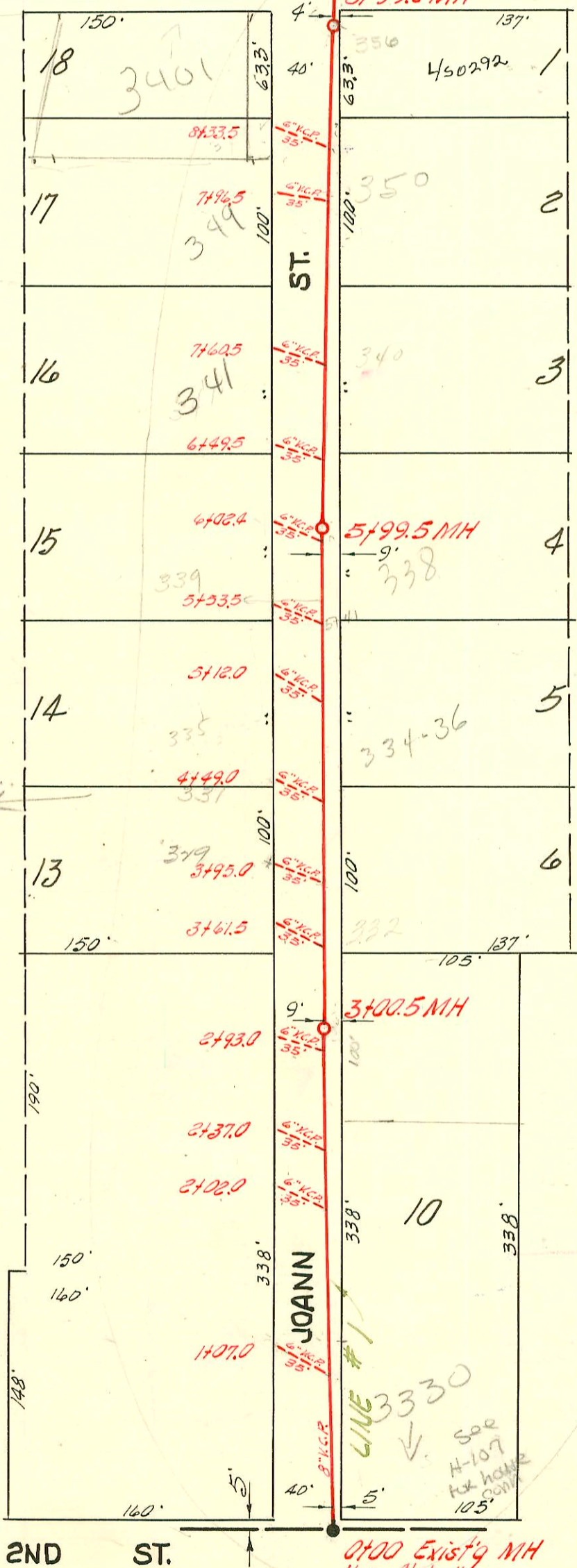


Neighborhood  
Rental Area



High  
See I-55



1" = 80'

Notes:  
6" Leads are privately maintained by and properly owned by NOT CITY - confirmed by Tel. call to Calvin Fusit- Sewer on 7/2/02  
If new Bldg connection needed - it must be sch'd from house to 8" Main per Ann Leidy, Plumbing Chief 7-2/02  
RSM

H-120

730

CONSTRUCTION RECORD

SERVICE RECORD

STATION	ELEVATION		Depth	MANHOLE	4-INCH "Y" BRANCHES		No. of Permit		House Number		DATE OF PERMITS		
	Ground	Grade			North West	South East	North West	South East	North West	South East	North West	South East	
0+0	116.6	107.70	8.9	0+00 Existg MH	New Stub N 0+42.0								
1+0	117.3	108.00	9.3		35'-6" 0+94.0 End 6" lead 1+07.0	3'-4" V.C.P. 0+92.0		25348		3330 W (Ortl and St (Gar)		5-21-90	
2+0	118.6	108.30	10.3		35'-6" 1+91.5 End 6" lead 2+02.0	3'-4" V.C.P. 1+53.5	14313 975		321 N. Joann 323 N. Joann		6-19-61 5-23-56		
3+0	119.1	108.60	10.5	3+00.5	35' of 6" 2+28.0 End 6" lead 3+37.0	3'-4" V.C.P. 3+07.5							
4+0	117.7	108.90	8.8		35' of 6" 3+88.0 End of lead 3+95.0	3'-4" V.C.P. 3+62.0							
5+0	117.0	109.20	7.8		35' of 6" 4+36.5 End of lead 4+49.0	3'-4" V.C.P. 4+16.5	86473	7611	335 Joann	338-36 N. Joann	10/10/66	8-1-58	
6+0	116.8	109.50	7.3	5+99.5	35' of 6" 5+41.0 End of lead 5+53.5	3'-4" V.C.P. 5+30.5		11590	339 N. Joann		10-5-59		
7+0	116.6	109.80	6.8		35' of 6" 6+39.5 End of lead 6+49.5	3'-4" V.C.P. 6+04.5		32048		333 W Joann		5-9-72	
8+0	116.6	110.10	6.5		35' of 6" 7+96.0 End lead 7+06.5	3'-4" V.C.P. 6+54.0		581	337 Joann	340 N. Joann	4-13-56	4-7-59	
9+0	116.6	110.40		8+99.0	35'-6" 8+25.0 End of lead 8+33.5	3'-4" V.C.P. 8+23.0		6067	340 Joann	350 Joann	4-2-56	1-28-58	
10+0	115.9	110.70	5.2		3'-4" V.C.P. 8+09.0	3'-4" V.C.P. 8+92.0		391	341 Joann	356 Joann	4-2-56	11-8-76	
11+0	115.8	111.00	4.8		35'-6" 10+52.0	3'-4" V.C.P. 10+150.0		22329	58545	430 N. Joann	437 W. Joann	12-23-70	8-4-77
12+0	115.9	111.32	4.6	12+08.0	10+62.0	10+150.0		54307		434 W. Joann		3-18-76	
13+0	115.9	111.70	4.2		11+13.5	11+11.5		B 4699		433 W. Joann		12-2-65	
	115.9	111.76	4.1	13+12.5	11+69.0	11+67.0		12208	# 710	438 Joann	437 W. Joann	1-11-60	5-7-56
					Y NORTH								
					12+20.5			9008		3409 Joann		1-12-59	
					12+76.5			9009		3413 Joann		1-12-59	
Line # 2	0+0	115.9	4.5	0+00=12+08.0 in Line #1	0+14.0			6765		3405 W. St. Louis		4-28-58	
	1+0	116.0	4.3	1+00.0	0+76.0			6766		3401 W. St. Louis		4-28-58	

2000-023501-349 N Joann-10/17/00-Lubbers- 5/0 24'S of NPL and 10' behind curb

2002-01407 82062 349 N Joann - McCullough

# 2004-007 349 N Joann - 8-20-58  
 # 1990-Top-139 N. Low-Headguth Paly 9-3-58 65%  
 12209 Top 44071 Joann Roy 3-28-60 (13+09.5)  
 B3441-Top-330 W Joann - Kevin Senior Service 5-21-65 (top in MH 3+00.5)