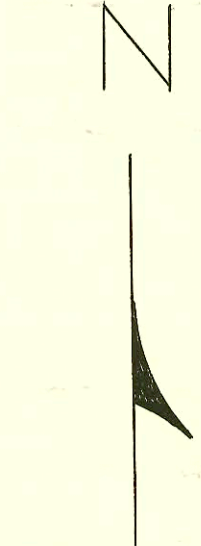
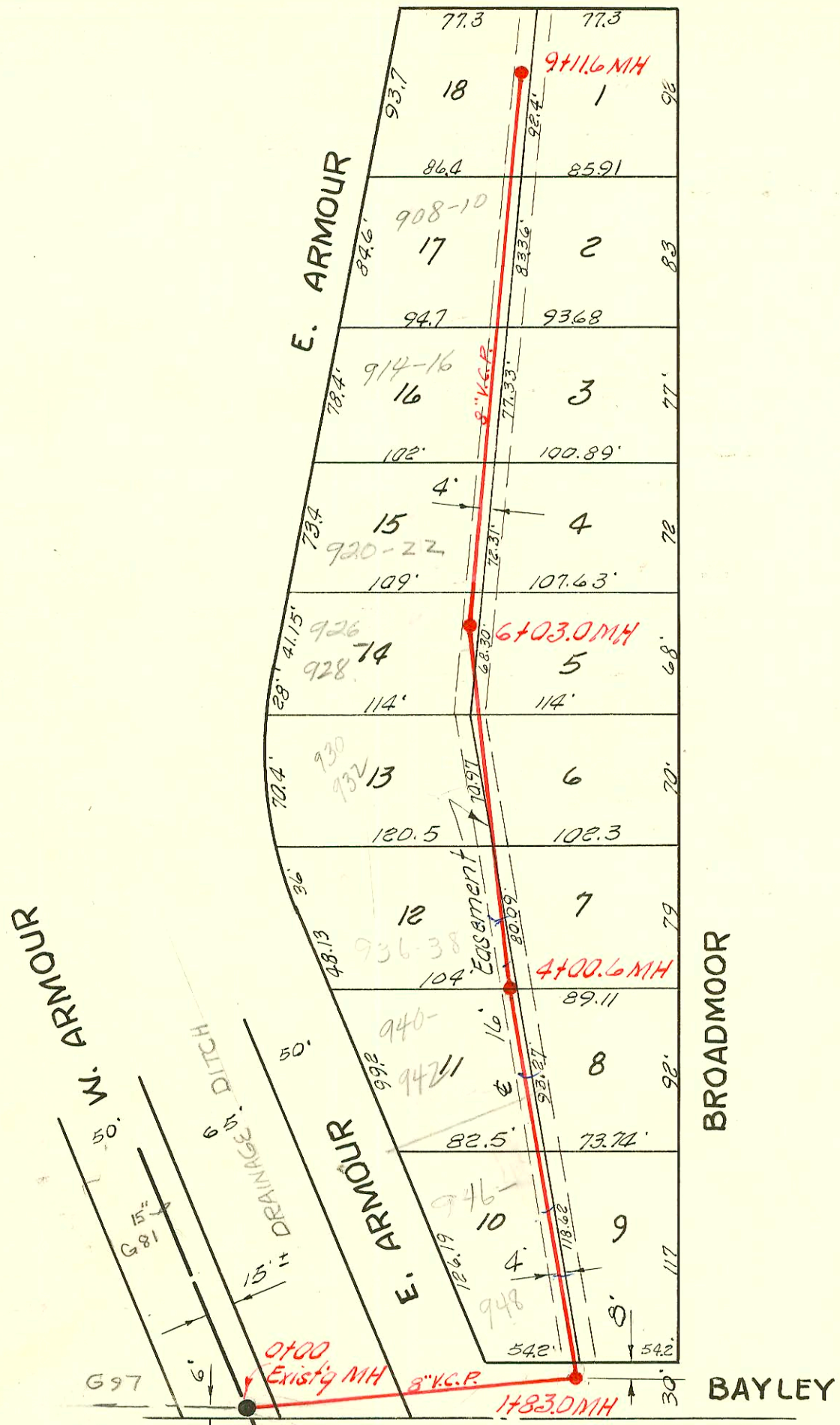


LINCOLN ST.



1" = 80'

LAT. 7, SUB. 5, W. I. S.

L. C. PEDDICORD CONTR., APRIL 3, 1956

BK. NO. K-37, PROJ. NO. C25-73

CONSTRUCTION RECORD

SERVICE RECORD

STATION	ELEVATION		Depth	MANHOLE	4-INCH "Y" BRANCHES		No. of Permit		House Number		DATE OF PERMITS	
	Ground	Grade			North West	South East	North West	South East	North West	South East	North West	South East
0+0	138.6	128.56	10.0	0+00 Exist'g MH								
1+0	135.7	128.96	6.7									
	136.6	129.29 Out	7.3									
	136.6	129.37 In	7.2	1+83.0								
2+0	136.9	129.46	7.4		top 2+48.0				9488		8-23-73	
					top 2+84.0			C40862	746 S. Armour			
					2+42.5	2+39.5		C40793	1220 S. Armour		8-21-73	6-22-56
3+0	138.9	129.86	9.0		top 3+53.8				942		8-21-73	6-22-56
					3+57.5	3+54.5		C40794	1219 S. Armour			
4+0					top 3+89.0			C40863	940 S. Armour		8-23-73	
	138.0	130.26	7.7	4+00.6								
					4+43.0	4+41.0			1218			6-22-56
5+0	138.9	130.66	8.2		top 4+46.6			C40864	936-38 S. Armour		8-23-73	
					5+15.0	5+12.0		C36374	1217		11-15-72	6-22-56
					top 5+79.3	5+76.3		C35894	928 S. Armour		11-7-72	5-30-56
6+0					top (6+00.0)			C35892	926 S. Armour		11-9-72	
	139.3	131.06	8.2	6+03.0	6+42.8	6+49.0	6+46.0	C34290	922 S. Armour		8-15-72	
					6+49.0	6+46.0			921			5-30-56
7+0	139.1	131.46	7.6		top 6+70.6			C34288	920 S. Armour		8-15-72	
					7+27.5	7+24.5			915			5-30-56
8+0	140.5	131.86	8.6		top 7+96.6			C41509	910 S. Armour		10-3-73	
					top 8+28.6			C41502	908 S. Armour		10-3-73	5-30-56
					8+12.0	8+09.0			917			
					8+76.0	8+73.0			917	Lincoln	5-30-56	5-30-56
9+0	142.7	132.26	10.4									
	142.2	132.30	9.9	9+11.6								

top C41503-914 S. Armour - Levers - 10-3-73 (7+47.8)
 top C41508-916 S. Armour - " - 10-3-73 (7+14.0)