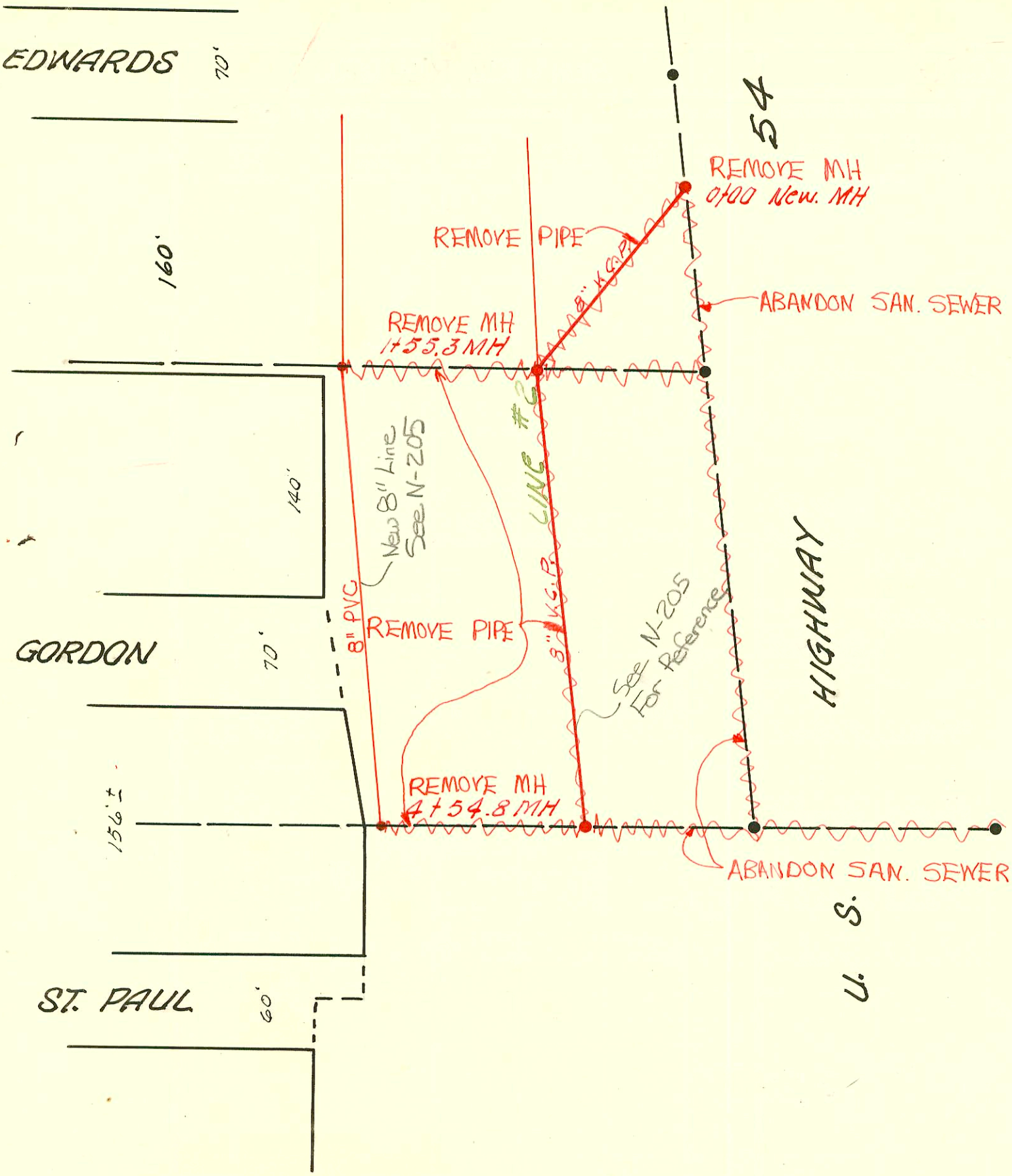


H-124 A



**NOTE:** See title block on page 123.

KELLOGG - K-42 TO SYCAMORE  
(SANITARY SEWER CHANGES)  
PROJ. NO. 700500  
BUILT BY WILDCAT CONST. CO.  
BOOKED 2-7-96 AS PER PLAN

25TH ST.	
1	2
3	4
5	6
7	8
9	10
11	12
13	14
15	16
17	18
19	20
21	22
23	24
25	26
27	28
29	30
31	32
33	34
35	36
37	38
39	40
41	42
43	44
45	46
47	48

AVE. MASCOT

AVE. SHELTON

24TH ST.

0+00 exist'g MH

6+51.0 MH

3+24.6 MH

8" PVC LINE #2

8" K.S.P. LINE #2

8" PVC

See N-205 For Reference

REMOVE PIPE

REMOVE MH

REMOVE MH

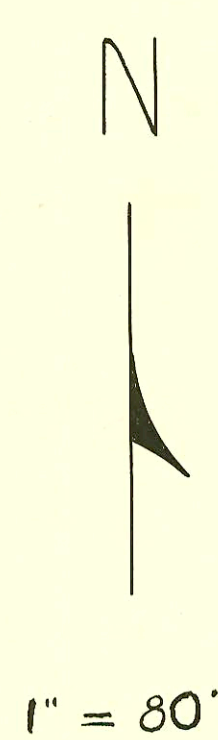
REMOVE MH

ABANDON SAN. SEWER

ABANDON SAN. SEWER

U. S. HIGHWAY 54

8-36 Replat - Laham Add



**LAT. 12, DIST. T, S. S. 20**  
L. C. PEDDICORD CONTR., APRIL 21, 1956  
BK. NO. K-29, PROJECT NO. C23-67

CONSTRUCTION RECORD

SERVICE RECORD

STATION	ELEVATION		Depth	MANHOLE	4-INCH "Y" BRANCHES		No. of Permit		House Number		DATE OF PERMITS	
	Ground	Grade			West	East	North West	South East	North West	South East	North West	South East
Line #2 0+0	112.0	106.23	5.8	0+00 New MH								
1+0	111.6	106.33	5.3									
	112.1	106.39	5.7	1+55.3								
2+0	112.1	106.43	5.7									
3+0	110.6	106.53	4.1									
4+0	110.4	106.63	3.8									
	110.4	106.69	3.7	4+54.8								
4-INCH "Y" BRANCHES												
0+0	123.6	117.20	6.4	0+00 EXIST'G MH								
					0+79.5		894	916 W.	2503 N Shelton			5-25-56
					0+92.0		14452	2475			7-17-61	
1+0	124.1	117.60	6.5		1+25.4	1+32.2	C1637	895	2506 mascot	2509 N Shelton	1-23-67	5-25-56
					1+41.4							
						1+78.0		896	2515 N Shelton	2511 ?		5-25-56
					1+93.0							
2+0	123.3	118.00	5.3		2+32.5	2+29.5		897	2521 N Shelton	7 APPROVING 2515		5-25-56
					2+57.0							
						2+69.0		1249	2517 N Shelton			6-26-56
					2+84.5	2+81.5						
3+0	123.0	118.40	4.6		3+08.0		5175		2526 mascot		8-29-57	
	123.0	118.50	4.5	3+24.6	3+39.0	3+29.25			C2996 2527 N Shelton			1-18-72
					3+48.0				2519 N Shelton			10-20-67
					3+60.0		7633		2528 mascot			6-13-56
					3+88.0	3+85.0						
4+0	122.8	118.80	4.0		4+15.0	4+12.0	7634		2530 mascot		8-5-58	
					4+40.0	4+37.0						
					4+63.0	4+60.0	7635		2532 mascot		8-5-58	
					4+85.0	4+82.0						
5+0	122.9	119.20	3.7		5+12.0	5+09.0	7636		2534 mascot	2527 Shelton	8-5-58	6-17-69
					5+37.0	5+40.0						6-20-56
					5+58.0	5+79.0						3-27-62
					5+88.0	5+85.0						11-3-60
												12-21-58
6+0	124.0	119.60	4.4		6+12.8							6-17-69
					6+39.5	6+36.5						7-30-56
	124.9	119.80	5.1	6+51.0								6-17-69

C 70406 - 2523 N Shelton - 5.0 - 3-1-79 Kerwin (4410.6)