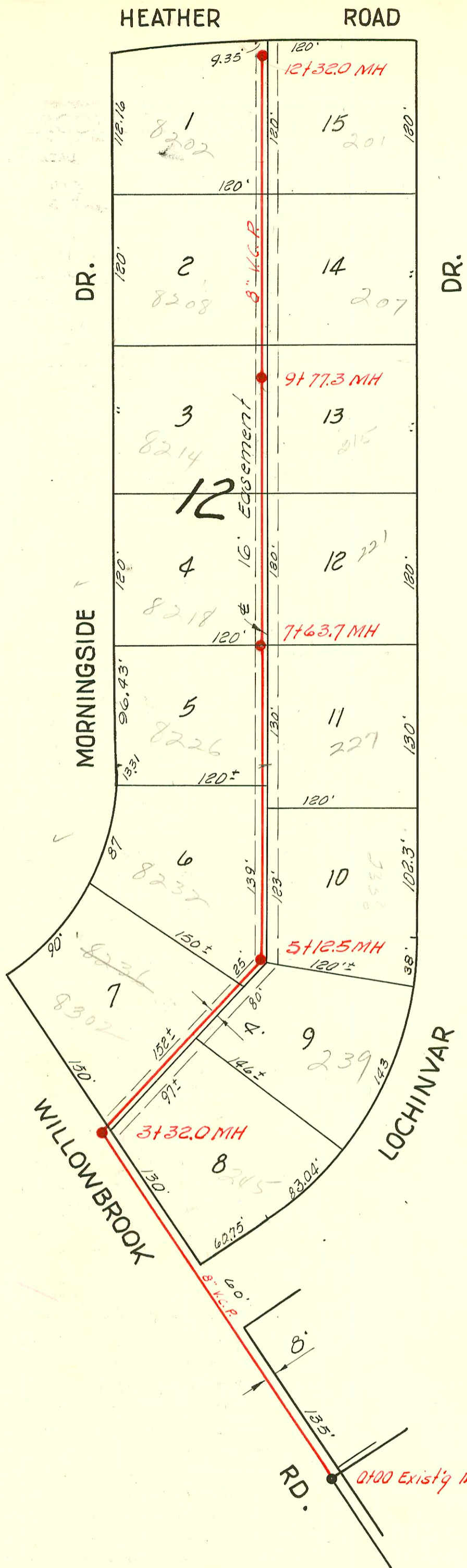


H 125A



1" = 80'

LAT. 14 , W. I. S.
 DEVELOPMENT INC., APRIL 7, 1956
 BK. NO. K-29, PROJ. NO. C26-1

785

CONSTRUCTION RECORD					SERVICE RECORD								
STATION	ELEVATION		Depth	MANHOLE	4-INCH "Y" BRANCHES		No. of Permit		House Number		DATE OF PERMITS		
	Ground	Grade			North West	South East	North West	South East	North West	South East	North West	South East	
0+0	146.7	142.82	3.9	0+00 EXIST'G MH BUILT WITH OUTSIDE DROP									
1+0	149.4	144.02	5.4										
2+0	152.7	145.22	7.5										
3+0	154.7	146.42	8.3										
	156.1	146.80 146.88	9.3 9.2		3+32.0								
4+0	156.4	147.17	9.2			3+61.0	3+59.0						
									16973	339 Schuman		4-18-63	
5+0	157.1	147.57	9.5										
	156.7	147.63 147.73	9.1 9.0		5+12.5								
						NORTH	SOUTH						
						5+27.5	5+20.0	10891 592	12057	233 Lochinvar	8232 Morningside	5-10-84 4-24-56	12-14-59
6+0	157.4	148.07	9.3			5+34.0							
						6+54.0							
							6+69.0						
7+0	157.7	148.47	9.2										
	158.0	148.73 148.83	9.3 9.2		7+63.7								
						7+84.0	7+86.0	21020 9773		221 Lockman		9-3-90 3-24-57	
8+0	157.9	148.87	9.0										
9+0	158.2	149.27	8.9										
						9+02.5	9+04.5						
10+0	157.9	149.59	8.3	9+77.3									
	157.4	149.67	7.7			10+23.5	10+25.5	250 10334 8524 1,0757	8218 Morningside 227 Lockman	4" SCH 40 clo only Morningside	6-26-50 5-8-59 8-25-58 11-4-58		
11+0	158.3	150.07	8.2			11+44.0	11+46.0	11379	92-20989 7126	8202 Morningside		9-23-92 5-29-58	
12+0	157.5	150.47	7.0										
	158.2	150.61	7.6	12+32.0									

2001-02774-227 Lochinvar (N. Sewer) Replaced all but lower 1' of line - 2H45, 1U22, 1TWINCO
 2001-02772-227 Lochinvar (S. Sewer) Replaced all but lower 1' of line - 1TWINCO, 1U22, 2H45

2001-02774-227 Lochinvar R-10-19-56 Reynolds (6+63.7) A Good Plumber - 4" SCH 40 (North Swr) See above
 2001-02772-227 Lochinvar R-10-17-56 Reynolds (6+63.7) A Good Plumber - 4" SCH 40 (South Swr) See above
 #13238 top - 8218 Morningside - Al Kenning 8-9-60 (8+13.2)
 #13114 top - 8214 Morningside to Eng. Jp 7-28-60 (9+26.7)
 #16299 top - 8226 Morningside - Ken Appoldt - 10-30-62 (7+11.7)
 #B1451 top - 8302 Willowbrook - Justa Pelly 4-9-64 (3+64)
 B1777 top - 245 Lochinvar - Lifson, Inc - 8-13-64 (2+27) R - possibly connected on n. & line comes out back of bldg (probably on NW line)