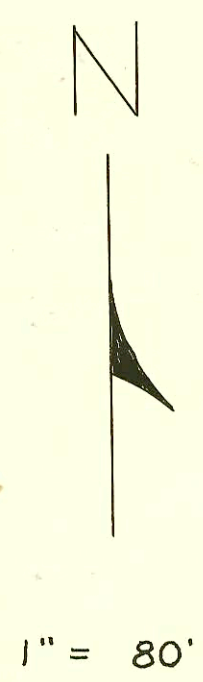
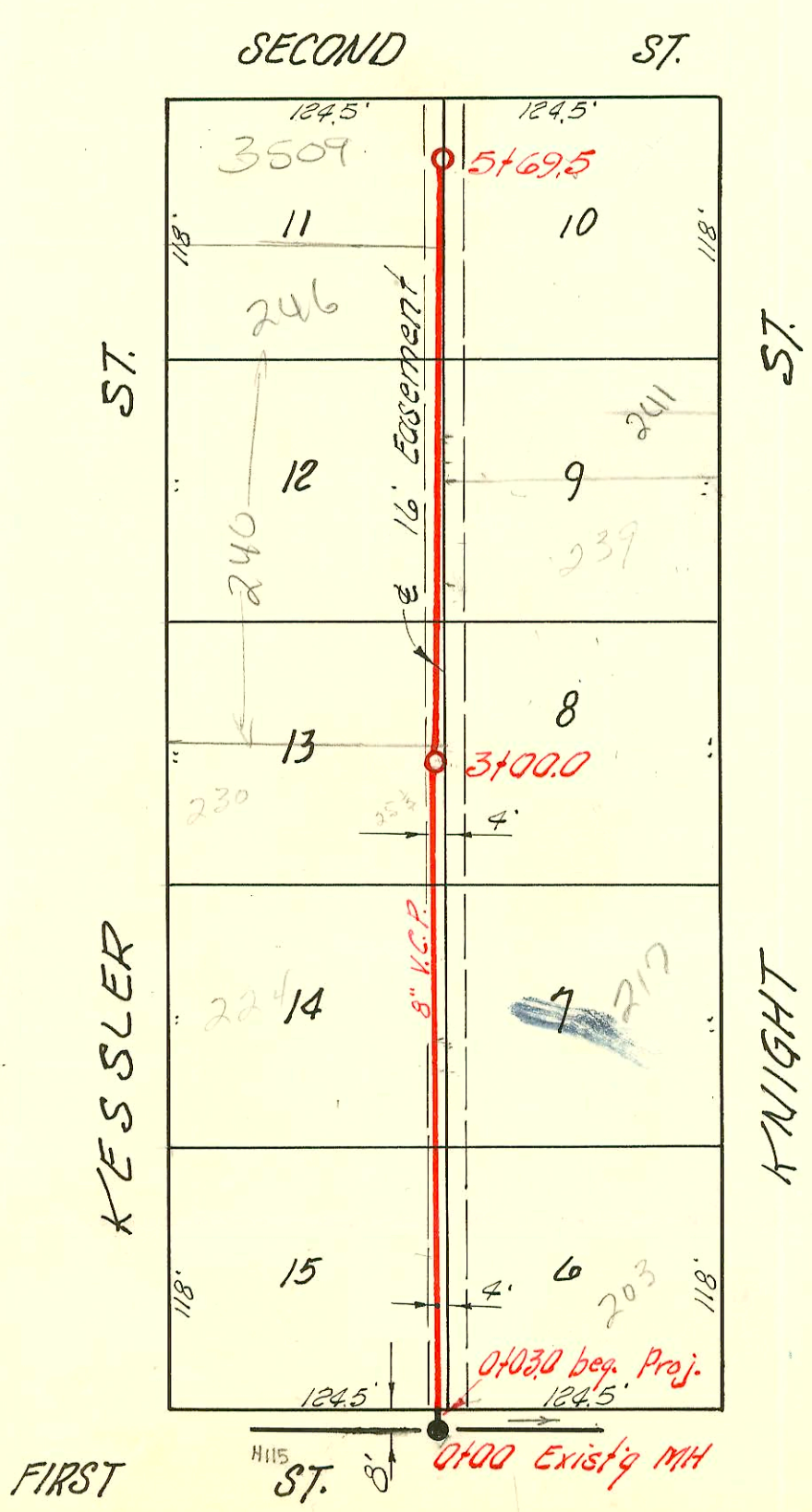


H 126A

See Sewer Book I-153
Bader 3rd Add is incl. in Benefit Dist
for this Lat. 2 but will be using
Lat 7 shown in Book I-153 for Bdy Conn.



LAT. 2, SUB. 6, S. S. 22
 UTILITIES CONT. INC., APRIL 20, 1956
 BK. NO. K-22, PROJ. NO. C26-14



1" = 80'

LAT. 3, SUB. 6, S. S. 22
 UTILITIES CONT. INC., APRIL 20, 1956
 BK. NO. K-22, PROJ. NO. C26-15

126.

CONSTRUCTION RECORD						SERVICE RECORD						
STATION	ELEVATION		Depth	MANHOLE	4-INCH "Y" BRANCHES		No. of Permit		House Number		DATE OF PERMITS	
	Ground	Grade			North West	South East	North West	South East	North West	South East	North West	South East
0+0 0+03.0	118.00 Beg. Project	110.87	7.1	0+00 Existg MH								
					0+36.0	0+39.0						
					0+76.0	0+79.0						
1+0	117.1	111.17	5.9		1+51.5	1+53.5	610		218 71 Kessler		4-23-56	
					1+98.5	1+96.5	B1286		220 11 Knight		5-22-54	Change 4-11-66
					1+94.5		21286				8-11-58	
2+0	116.0 115.7	111.47 111.62	4.5 4.1	2+50.5	2+61.0	2+63.0	#631		234 21 Knight		4-25-56	
3+0	115.5	111.77	3.7		3+20.0	3+22.0						
					3+86.5	3+83.5						
4+0	115.4	112.07	3.3		4+17.5							
					4+32.6		1429		242 21 Knight		7-17-56	
					4+93.0	4+83.0						
						4+99.0						
5+0	115.7 116.0	112.37	3.3 3.5	5+54.5	5+32.5		#1478		255 Knight		7-17-56	

WEST EAST

0+0 0+03.0	124.0 Beg. Project	112.94	11.1	0+00 Existg MH								
					0+36.5							
					0+52.0		#578		218 71 Kessler		4-20-56	
					0+97.5	0+94.5	3480	#549	218 71 Kessler		3-10-56	4-19-56
1+0	124.0	113.14	10.9		1+45.5		#626	#94-206777 585	218 Kessler		5-1-56	12-29-94 4-23-56
					1+70.4				217 R Knight			
2+0	121.8	113.34	8.5		2+13.0		#1926		234 Kessler		8-10-56	
					2+74.5		4355		230 Kessler		4-19-57	
						2+77.5						
3+0	119.8	113.54	6.3	3+00.0	3+26.5	3+29.5						
					3+75.0	3+78.0	#97		241 R Knight		6-3-97	4-25-56
4+0	118.3	113.74	4.6		4+20.5							
						4+45.3						
5+0	118.0	113.94	4.1		5+12.3		#968		246 110 R Kessler		12-21-56	
					5+48.4	5+45.4	#708		239 Knight		5-7-56	
	118.2	114.08	4.1	5+69.5			23584		231 Knight		1-21-57	

1243 W. OF MH. NYC 4" sch 40 P.V.C.
 (94-15290-7 9-8-94 210 W Knight NC - NO sewer installed)
 yet-5-9-94 permit closed out 5/10/94 NO REFUND or TRANS OF FEE.
 SWR 2006-00718-240 N Kessler (6) 454 (2) Kickout (2) twin (1) (1) 224 (1) kerck
 soil pipe ext, 5" main, 4" sch 40 PIC - Reddi Ind. 3/17/04

Tap 3446 3509 W 5th Building 1-8-57
 Tap #6390 230 N. Kessler (near) 2d from W. 3-25-58
 10522 Tap 239 Knight 4-15-59 3167