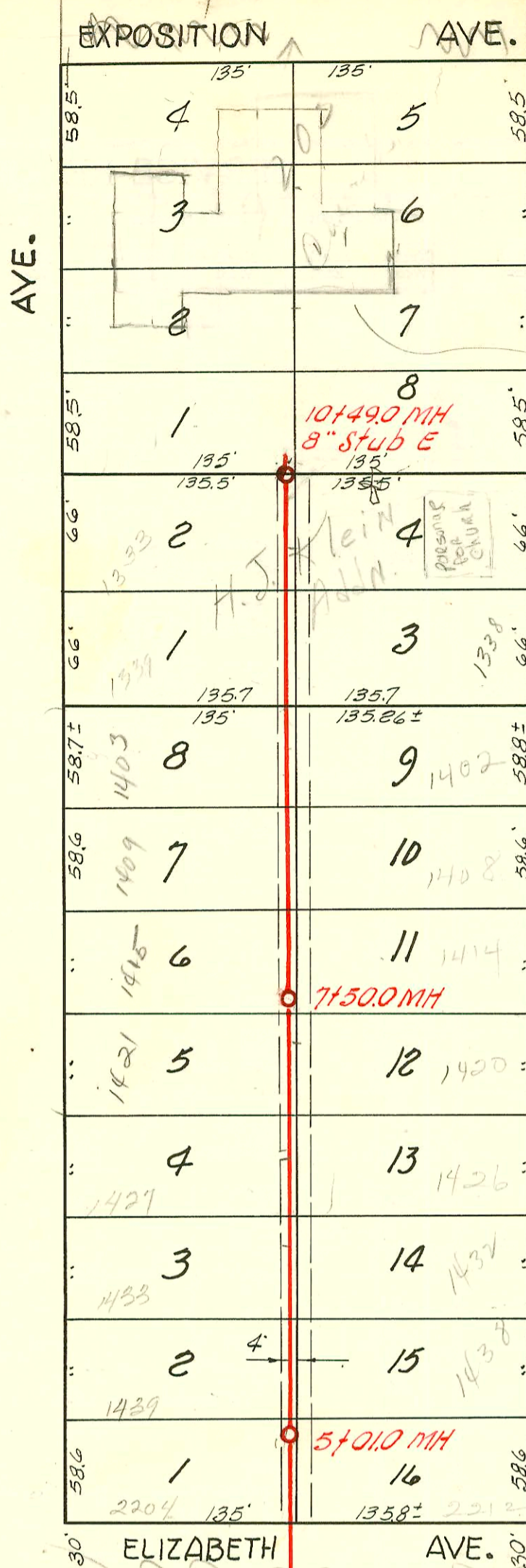
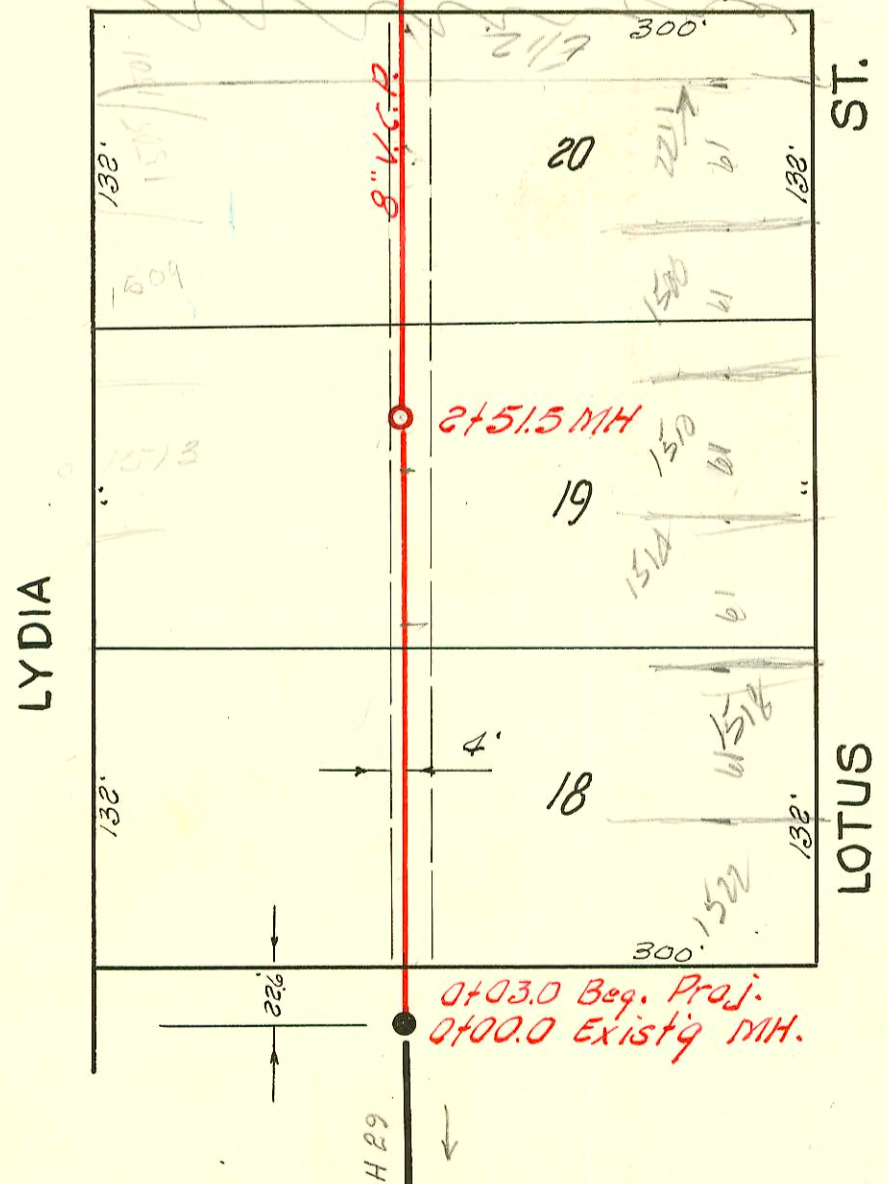
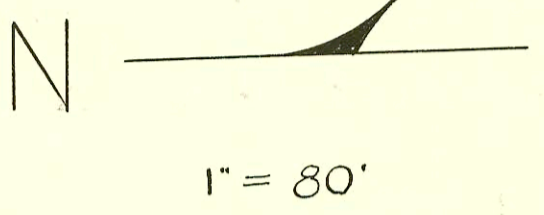


H 127A



This area replaced by the Westside Church



LAT. 16, SUB. 2, S. S. 22
 UTILITIES CONT. INC., APRIL, 20, 1956
 BK NO. K-39, PROJ. NO. C25-38

CONSTRUCTION RECORD						SERVICE RECORD						
STATION	ELEVATION		Depth	MANHOLE	4-INCH "Y" BRANCHES		No. of Permit		House Number		DATE OF PERMITS	
	Ground	Grade			North West	South East	North West	South East	North West	South East	North West	South East
0+00	101.3	92.80	8.4	0+00 Existg MH								
0+03.0	Beg. proj.											
					0+31.5	0+34.5	5044	8812	1521 Lydia	1522 Lotus	7-30-57	12-3-58
					0+99.0		5667		1511 Lydia		12-2-57	
1+0	101.4	93.00	8.4									
						1+02.0			#5191 8081	1518 Lotus		2-22-58
					1+64.0	1+67.0	21426	3080	1513 Lydia R	1514 Lotus	9-6-88	9-25-58
2+0	101.3	93.20	8.1									
					2+27.5	2+30.5	5666	#0822 7713	1509 Lydia	1510 Lotus	12-2-57	9-23-80
					2+93.0	2+96.0	5034	7972	1505 Lydia	1506 Lotus	7-25-57	2-2-83
3+0	101.5	93.40	8.1									
					3+60.0	3+63.0	5033		1501 Lydia		7-25-57	8-20-58
4+0	101.9	93.60	8.3									
					4+09.6	4+11.6						
					4+89.0	4+92.0	7488	15998	2204 Elizabeth	2205 Elizabeth	7-30-58	5-9-62
5+0												
	101.6	93.80	7.8	5+01.0								
					5+50.0	5+52.0	7489	16477	1439 Lydia	1438 Lotus	7-30-58	12-14-62
6+0	100.7	94.00	6.7									
					6+09.5	6+11.5	97-13507 7490	8521	1433 Lydia	1432 Lotus	7-30-58	12-5-63
					6+57.0	6+59.0	7491	B1309	1421 Lydia	1420 Lotus	7-30-58	5-26-64
7+0	100.6	94.20	6.4									
					7+24.5	7+26.5	9483	C769	1421 Lydia	1420 Lotus	3-10-59	11-8-66
					7+83.0	7+85.0	9482	B2749	1415 Lydia	see below	2-7-00	1-26-65
8+0	101.4	94.40	7.0									
					8+43.0	8+45.0	9481	B2750	1409 Lydia	1408 Lotus	3-10-59	1-26-65
9+0	101.6	94.60	7.0									
					9+06.5	9+08.5	9480	B5415	1409 Lydia	1408 Lotus	3-10-59	4-8-66
					9+66.0	9+68.0	13558	C6204	1332 Lydia	1331 Lotus	7-30-58	7-14-77
10+0	102.5	94.80	7.7									
					10+35.0	10+32.0	5445		1328 Lydia	1327 Lotus	7-30-58	4-25-85
					104.0	94.90	9.1	10+49.0	(8" stub E)	4947		5-21-56

R-2000-00332-1415 W LYDIA - Simple - 4" SCH 40 - Replaced all but upper 10' and lower 1'
No alley - No bends

R-#3551 - Sep. 1828 Lotus - Kennedy Oly. Co. - 4-19-56 (Long 4-24-85)
7911 Top 1502 Lotus - French. 8-20-54
H-22258 - 12/27/88 REP - 2211 S Elizabeth - 3+62.0 top 4" sch 40 pvc