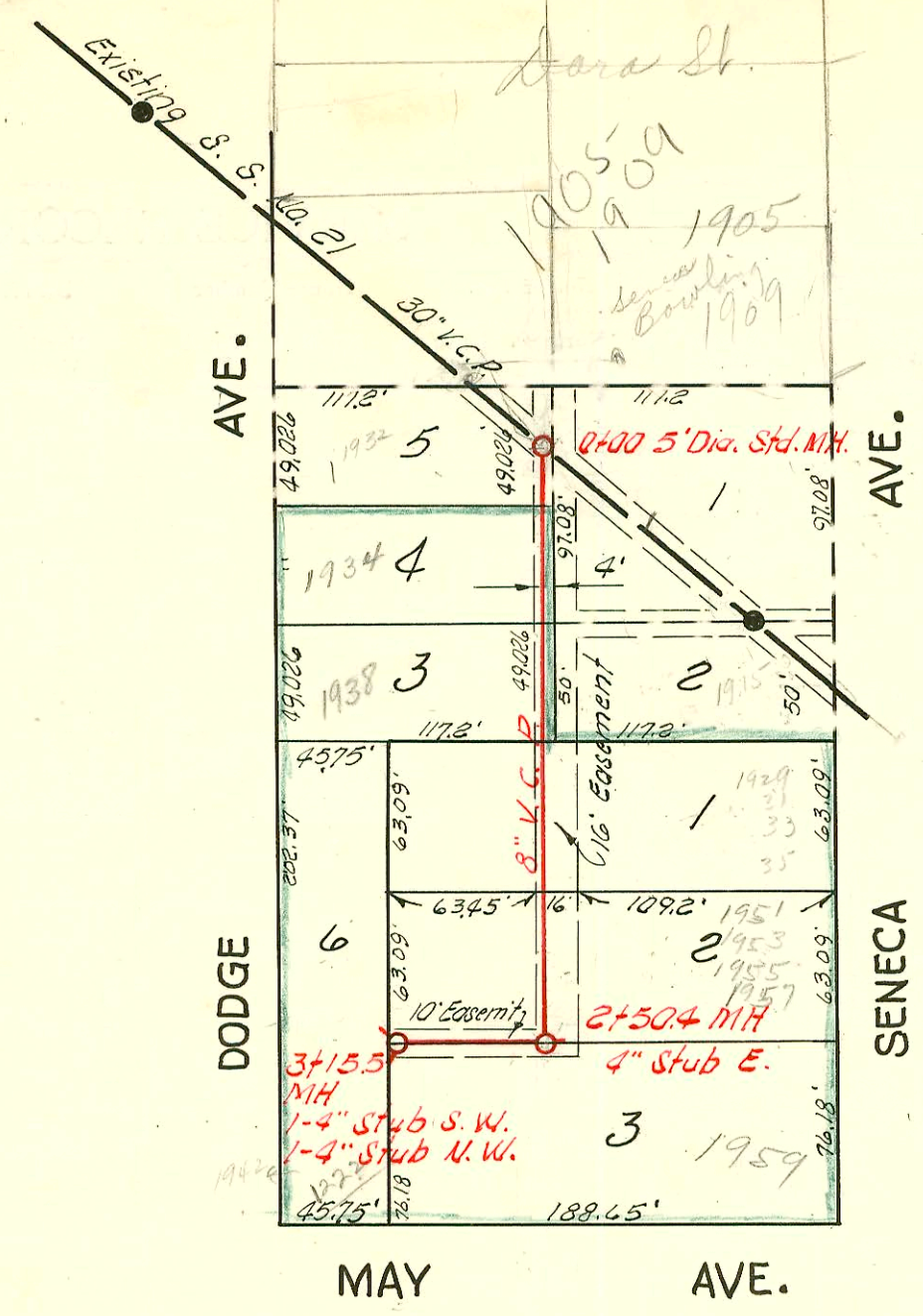


129A

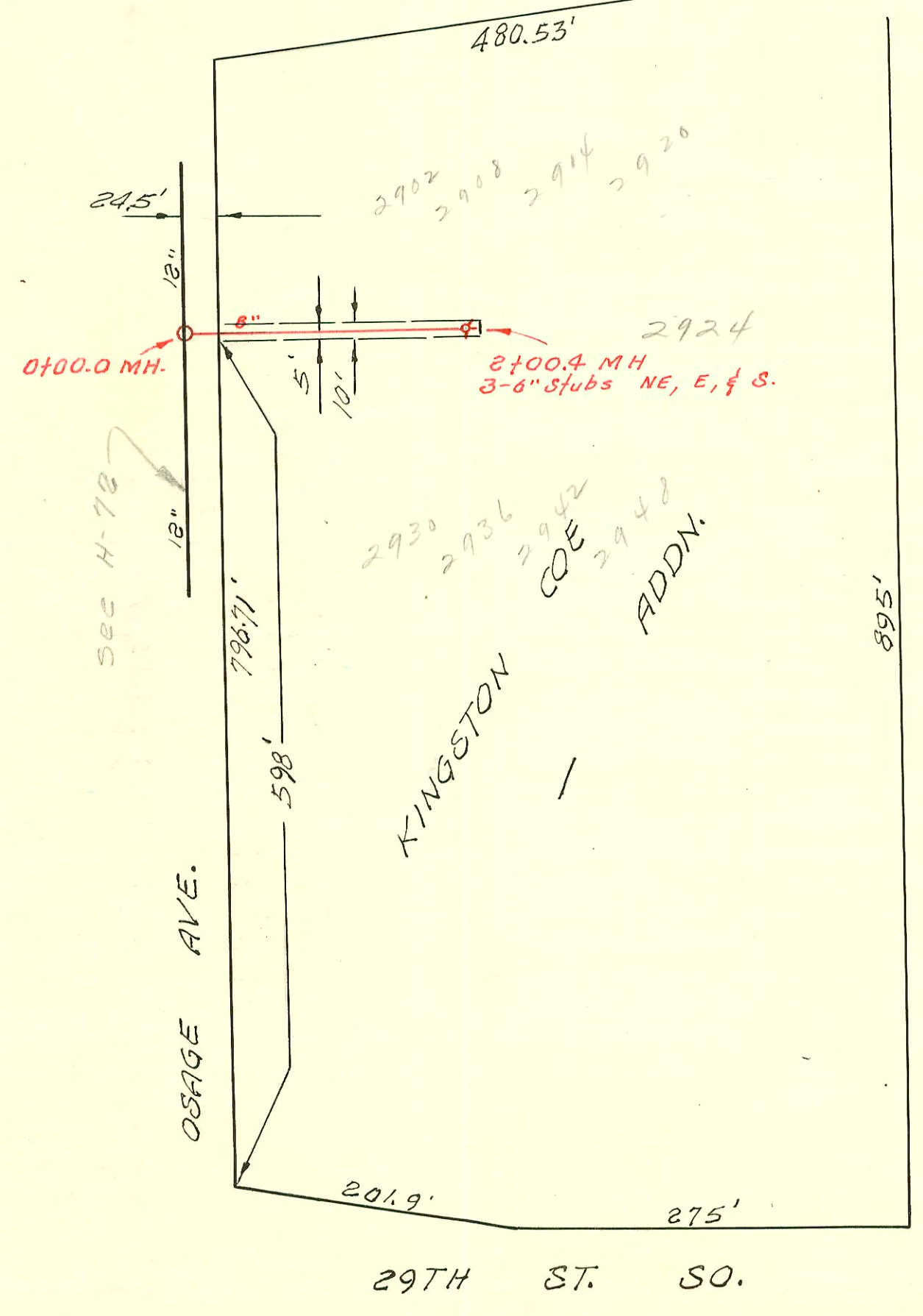


NOTE:  
Benefit dist. is the lots enclosed with green line.

N

1" = 80'

LAT. 2, DIST. E, S. S. NO. 21  
DEVELOPMENT INC., APRIL 30, 1956  
BK NO. K-33, PROJ. NO. C22-70



N

1" = 100'

KINGSTON COE ADDN.  
PRIVATE SAN. SEWER  
BK. U. K. NO. 3  
3-7-68

9-14-1-7

#1669 12/12/91 - 1909 S. Seneca - David Lieschabs  
#1671 12/12/91 - 1909 S. Seneca - David Lies - NK - (Tapped 4" NW of a MH)

CONSTRUCTION RECORD						SERVICE RECORD						
STATION	ELEVATION		Depth	MANHOLE	4-INCH "Y" BRANCHES		No. of Permit		House Number		DATE OF PERMITS	
	Ground	Grade			North West	South East	North West	South East	North West	South East	North West	South East
0+0	101.3	98.70	2.6	0+00 5' Dia. Std. MH	0+08.0	0+41.0	1938 1938	1938	1938	1938	5-26-71 6-11-52 5-26-71	
1+0	100.8	98.80	2.0		1+44.0	1+41.0	4753				7-1-57	
2+0	101.1	98.90	2.2		2+06.0	2+03.0	1559				7-21-58	
	102.0	98.95 out 99.05 in	3.0	2+50.4	(4" stub E.)	Y SOUTH 2+62.0	1047046 676				10-16-74	
3+0	102.6	99.10	3.5		(2-4" stubs S.W.)		12639				6-25-76	
	103.1	99.12	4.0	3+15.5							4-11-60	

KINGSTON COE ADDN. PRIVATE S. S.

0+00	99.20	88.91		0+00 <sup>e</sup>								
1+00	98.30	89.41										
2+00	96.8	89.91 out 90.11 in		2+00 <sup>e</sup>	6" stub NE	6" stub E.	6" stub S.	107632	107633	107634	2962-08-14-20 S. Osage	3-28-68
											2924 do.	3-28-68
											2930-36-42-48 S. Osage	3-28-68

1955 S. Seneca (1439.4) - 7-21-58  
 C37734-1951 S. Seneca (Addn.) - James Krablin 3-16-73 top manhole 2+50.4  
 C24566 - Seal off 1911 S. Seneca - Al Henning 5-26-71 - 711 0+0 top  
 #C 2661 - top - 1915 S. Seneca - Daulton 4-12-67 (1421.8)

#4753 - Top - 1938 S. Dodge - Headpack - 7-1-57  
 #342 Top 1937-39 S. Seneca Culmores 10-10-58 1171.5  
 #12861 Top - 1905 S. Seneca - Davidson P.B. 6-1-60 (4" top into 1st MH S. from Dora St on 30' City Main) - This Conn has been S/O at same time - no permit.  
 Rec. #43479 spec. for \$500 paid 6-2-60 Seneca Sdy. Co. Inc.  
 #15314 top - trailer 1959 S. Seneca - Richard Le Roy, Jr 3-19-62 (2+61.4)  
 #16074 top - 1909 S. Seneca - Vaughn P.B. 8-24-62 (top 61' N.W. of 2nd MH SE of Dodge St)  
 Rec. #9868 spec. for \$500 paid 8-24-62 Vaughn P.B.