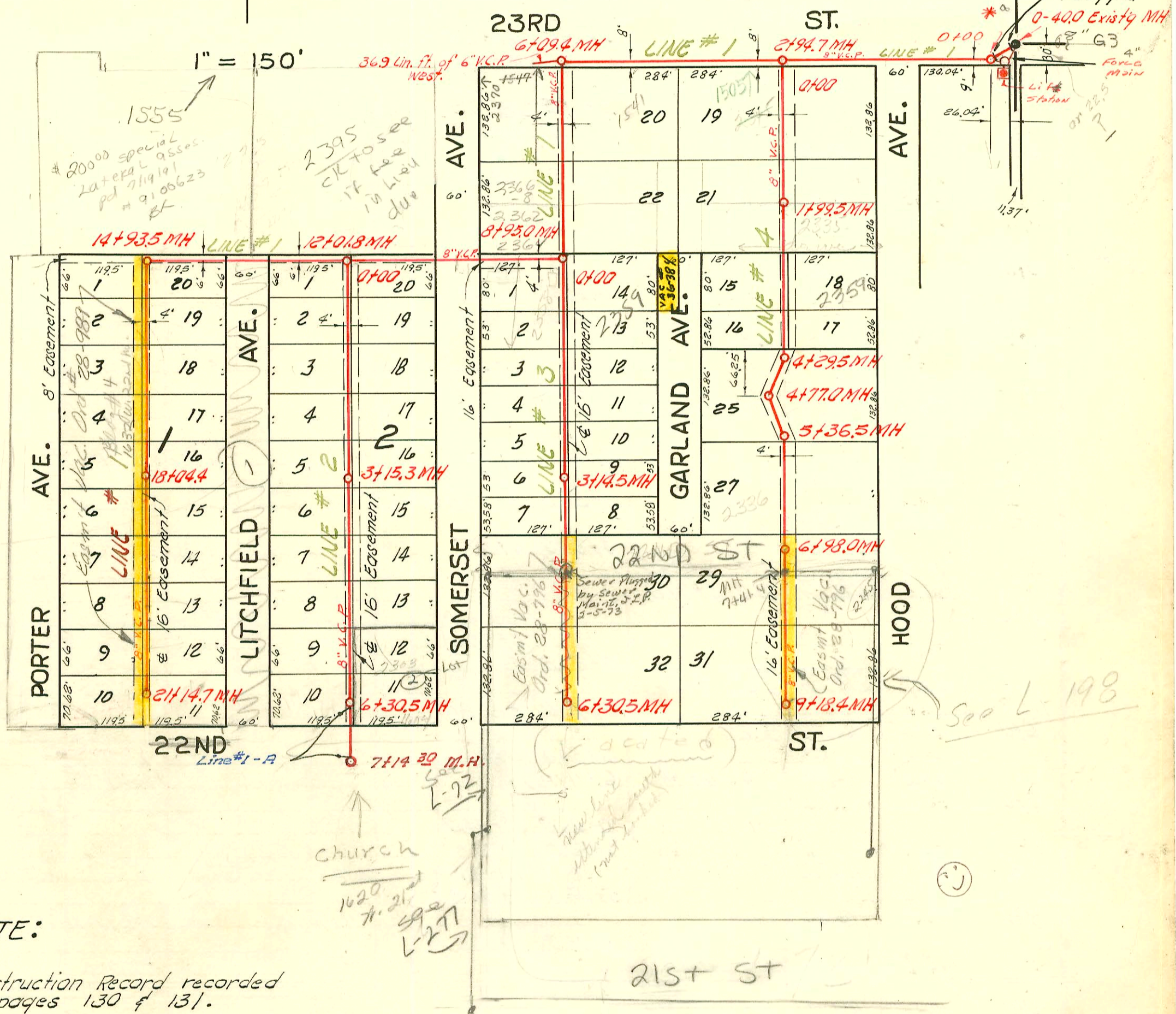


H 130 A



NOTE:
Construction Record recorded on pages 130 & 131.

* Lift Station inconnection With Dist. T. S.S. No 20
Mid States Const. Co. Inc. 1968

"LINE #1-A"
EXT. TO LAT. 17-DIST. T-S.S. NO. 20
MID-STATES CONSTRUCTION CO. INC.
7-25-62
BK. K-71 PRIVATE JOB
8-3-62

LAT. 17, DIST. T, S. S. NO. 20
W. B. CARTER CONST. CO. INC., MAY 1, 1956
BK. NO. K-40, PROJ. NO. C25-87

CONSTRUCTION RECORD

SERVICE RECORD

STATION	ELEVATION		Depth	MANHOLE	4-INCH "Y" BRANCHES		No. of Permit		House Number		DATE OF PERMITS		
	Ground	Grade			North West	South East	North West	South East	North West	South East	North West	South East	
0-40	124.2	118.61	5.6	0-40.0 Existg MH									
0+0	124.2	112.00	12.2	0+00 Temp. Lift MH									
1+0	123.8	112.20	11.6										
2+0	123.3	112.40	10.9										
		123.5	10.9	2+94.7									
3+0													
4+0	123.7	112.90	10.8										
5+0	123.9	113.10	10.8			5+13.0							
6+0	123.7	113.30	10.4										
		123.7	10.4	6+09.4	(36.9 lin. ft. 6" V.C.R. West)		17119	1547 W-2310 2370 SOMERSET			5-15-63		
					Y West Y East								
					6+53.5	6+51.5							
7+0	123.4	113.60	9.8										
						7+08.4	7+06.4						
						7+80.5	7+78.5	14032	2366-8 Somerset		6-20-85		
8+0	124.7	113.80	10.9										
						8+37.0	8+35.0						
	123.2	113.98 out 114.06 in	9.2 9.1	8+95.0	8+60.0			14033	2362-4 Somerset		6-20-85		
9+0	123.9	114.10	9.8										
10+0	123.4	114.30	9.1										
11+0	121.7	114.50	7.2										
12+0													
	123.4	114.98	8.4	12+01.8	M H tags			664868	2395 Somerset		1-10-78		
13+0	123.7	114.90	8.8										
14+0	123.9	115.10	8.8		6" SDR 35 14+74.5 top			27501-7	1555 W. 22nd St		7-19-91		
		124.5	113.28 out 113.40 in	3.2 3.1	14+93.5								
15+0													
						15+06.0	15+04.0						
						15+77.0	15+75.0						
16+0	125.0	115.60	9.4										
						16+40.5	16+38.5						
17+0	124.2	115.80	8.4										
						17+10.0	17+08.0						
						17+77.0	17+75.0						
18+0					Temp	17+98.6		042462	1632 W. 22nd St	(1844)	11-27-73		
	123.9	116.00	7.9	18+04.4					(Both Hayes) 1610 W. 22nd St		10-26-67		
						18+40.4	18+38.4		05484				
19+0	124.0	116.20	7.8										
						19+06.6	19+04.6						
						19+73.5	19+71.5						
20+0	124.0	116.40	7.6										
						20+39.2	20+37.2						
21+0	123.6	116.60	7.0										
						20+06.0	20+04.0						
						21+14.7							
						Y WEST Y EAST							
0+0	123.5	114.80	8.7	0+00=12+01.8 in Line #1									
						0+22.5	0+20.5						
						0+86.0	0+84.0						
1+0	123.1	115.00	8.1					Tap #05350	2345-33 65-75 Somerset		10-19-67		
						1+55.0	1+53.0						
2+0	123.9	115.20	8.7										
						2+21.0	2+19.0						
						2+88.0	2+86.0						
3+0	123.9	115.40	8.5										
		123.9	8.5	3+15.3				0859	2305-2325 Somerset		11-17-66		
						3+51.0	3+49.0						
4+0	123.6	115.60	8.0										
						4+18.3	4+15.3						
						4+83.0	4+81.0						
5+0	122.7	115.80	6.9										
						5+50.0	5+48.0						
6+0	122.5	116.00	6.5					01085	140-108 Somerset		12-6-66		
						5+32.2	5+29.5	B5257	12658 22nd St		2-8-66	11-27-84	
						6+19.4	6+17.4	9749 #02443	1604 W. 22nd St		6-20-59		
		122.3	6.2	6+30.5							3-29-67		
Construction Record for this project continues on page 131.													
0+00	122.9	116.28	6.6	EXIST 6+30.5				11385 63000		1620 W. 21st St (return)		7-10-84 12-4-78	

LINE # 1

LINE # 2

Line# 1-A

13360 Top 2347 Ford Calaman Alley 9-29-60 (0+92)
 114225 W. side on M.H. 33 22nd - Somerset 11-29-61
 70 117475 - 22nd St 2330 - at Newington - Tap (4+92.4) 8-5-63
 4062 del 1529 W. 22nd St. Phil. Sealy - 8-31-65 2-21-65 (5/4+71.9 - 137.5 E)

Exp. addn
 1500 W. 22nd St.
 Line 79 Adjman.