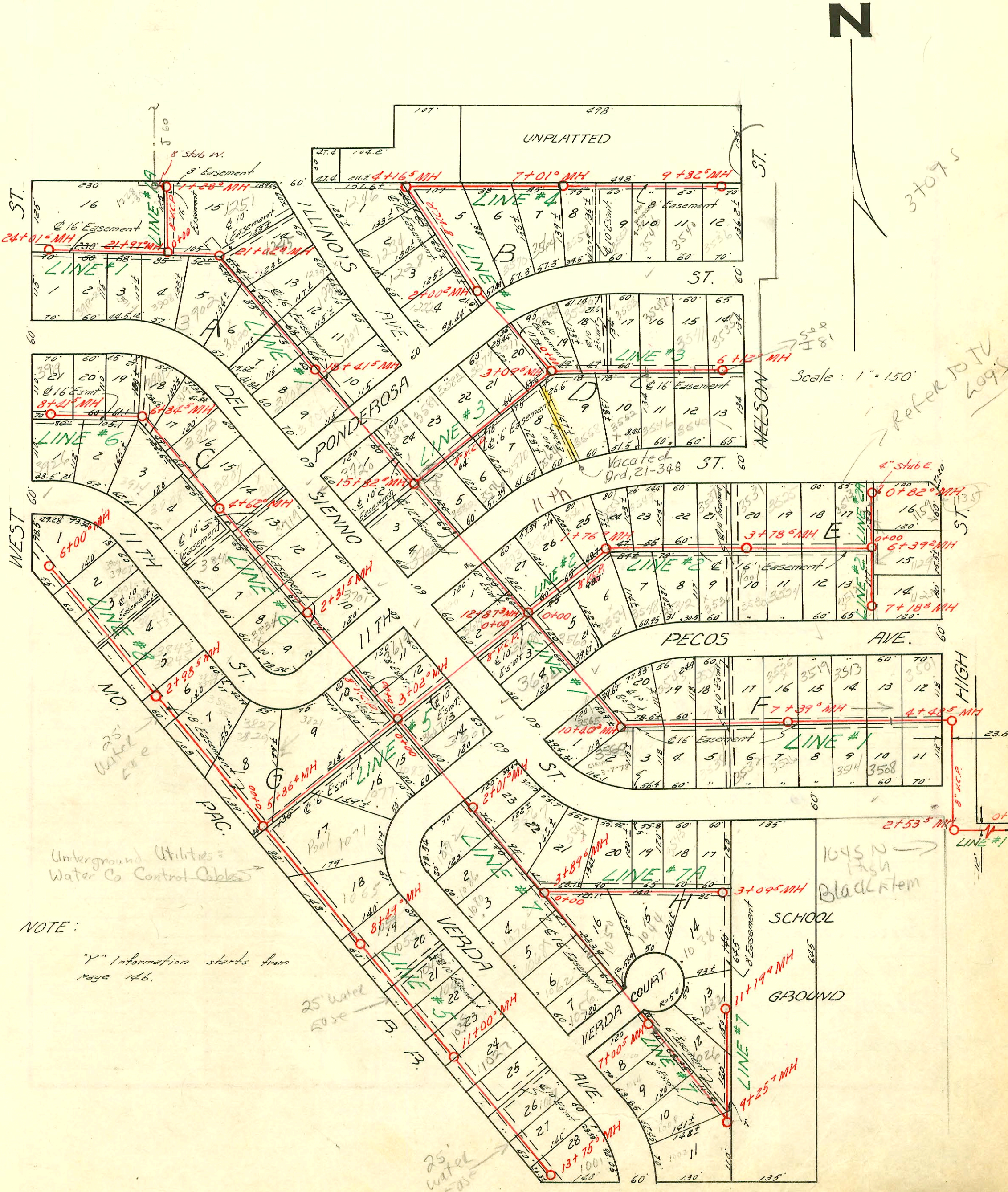


LAT. 2, SUB 9, S.S. #22  
DEVELOPMENT INC. CONST. CO. JUNE 28 1956  
BK NO. K-22, PROJ. NO. C25-92



Underground Utilities:  
Water Co Control Cables

NOTE:  
"Y" information starts from  
page 146.



Scale: 1" = 150'

Refer to TV  
Logs

1045 N  
Blackstem

SCHOOL  
GROUND

25' Water  
EASE

CONSTRUCTION RECORD

SERVICE RECORD

STATION	ELEVATION		Depth	MANHOLE	4-INCH "Y" BRANCHES		No. of Permit		House Number		DATE OF PERMITS	
	Ground	Grade			North West	South East	North West	South East	North West	South East	North West	South East
Line # 6 8+00					4HSCH40 +31.8		20050674 #1123		A see next pg		7-28-56 7-11-56	
Line # 7 0+00	125.10	117.62	7.48	8+41.5	"Y" WEST	"Y" EAST						
	124.98	115.84	9.14	0+00								
	122.48	116.04	6.44									
	122.67	116.24	6.43									
	122.67	116.24	6.43	2+01.0								
					+50°	+05°	#1347	#3116	1092	35-78	7-5-56	7-5-56
					2+38.5	+80.5	84986	96-19978-7	1086	3261R	1-24-66	11-30-56
	122.52	116.44	6.08		3+29.0				1080	Verda	10-6-58	
					3+93.0							
	122.19	116.72 IN	5.47	3+89.6								
	122.17	116.62 OUT	5.57									
	121.65	116.84	4.81		+51°							
					+10°							
					+68.5							
					+86.5				10419	1056	Verda Ct.	5-27-59
	121.54	117.24	4.30									
	121.54	117.24	4.30	7+00.5								
					+64.5				84138	1014	Verda	9-16-65
	122.28	117.44	4.84									
					+38.5				84137	1008	Verda	9-16-65
	122.25	117.64	4.61		+15.0				#11301	1002	Verda	7-5-56
	122.23	117.94	4.29	9+25.7								
					+52.5							
	122.52	118.14	4.38									
	122.10	117.84 (IN)	4.26	11+19.9								
	121.89	117.79 (OUT)	4.10									
Line # 7A 0+00	121.88	116.72	5.16		"Y" NORTH	"Y" SOUTH						
					+22°							
					+98°							
	121.68	116.92	4.76									
					+68°	+70°			#1563	1044	Verda Ct.	7-30-56
	122.74	117.12	5.62									
					+43°				5148	3543	Del Siemmo	9-4-57
					+91.5	+64.5			1264	1038	Verda Court	6/27/56
									#1570	3587	Del Siemmo	7-24-56
	122.64	117.32	5.32									
	122.71	117.34	5.37	3+09.5								
Line # 8 0+00	123.98	116.43	7.55	0+00	"Y" WEST	"Y" EAST						
					+70°							
	124.54	116.62	7.92		1+21.5				84364	382729	W. 11th	10-18-65
					+64.5							
	124.02	116.82	7.20		2+03.2				85069	3833-35	W. 11th	2-10-66
					+69.0							
	124.23	117.02	7.21	2+98.5	2+93.5				84396	3837-39	W. 11th	10-21-65
	124.23	117.02	7.21		3+24.5				84122	3843-45	W. 11th	11-16-65
					+29.9				84541	3853-57	W. 11th	9-15-65
					+54.3							
					+92.0							
	124.21	117.22	6.99		4+45.5				84542	3921-23	W. 11th	11-16-65
					+51.4							
	123.81	117.42	6.39									
					+07.4				#1421	3907	W. 11th	7-11-56
					+66.5							
	123.91	117.62	6.29	6+00.0	< tap in 7th				85297	3915-17	W. 11th	6-10-66

B5101 - Tap - 3907-09 W. 11th - Lee Taylor - 2-16-66 (5+31.5)  
 #1349 - Tapped - 1062 Verda - C.R. Lidy Pkg Co. - 7-5-56  
 #1350 - Tapped - 1020 Verda - C.R. Lidy Pkg Co. - 7-5-56  
 #1348 - Tapped - 1074 Verda - C.R. Lidy Pkg Co. - 7-5-56  
 4817 - 338 Del Siemmo - C.R. Lidy - 7-1-57  
 7222 Tap 3549 Del Siemmo Lidy 6-23-56  
 #1932 - tap 1068 Verda - Lidy Pkg. 8-22-58 (4+59.1)

2001-00674-3/28/01-3919 W Del Sienna - Padgett EXC- 4" SCH40 - Tied to Wye - ITWIN CO, LUZZ