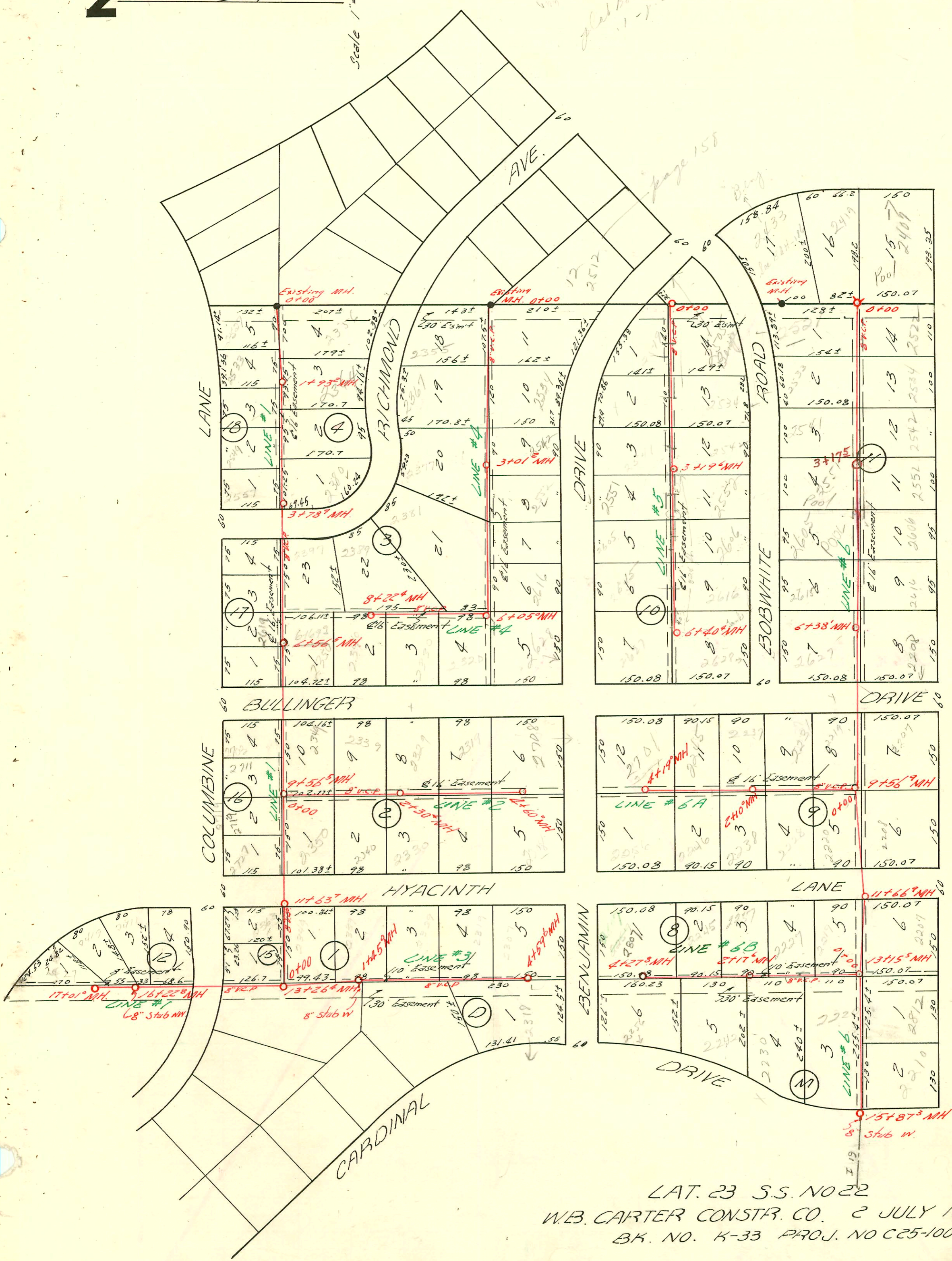




Scale 1" = 150'

Club Book 11-1-1955

page 158



LAT. 23 S.S. NO 22  
 W.B. CARTER CONSTR. CO. 2 JULY 1956.  
 BK. NO. K-33 PROJ. NO C25-100

2001-01156-5(11/01-2557)W Columbine-Wichita Exc-4" SCH40 Tied to claytile 55' E of MH 3+78.9(3+23.9) 1TW/CO, 1V 22,

CONSTRUCTION RECORD

SERVICE RECORD

STATION	ELEVATION		Depth	MANHOLE	4-INCH "Y" BRANCHES		No. of Permit		House Number		DATE OF PERMITS	
	Ground	Grade			North West	South East	North West	South East	North West	South East	North West	South East
11+00	129.27	116.65	12.62									
	128.47	116.78	11.69	11+66 <sup>9</sup>								
12+00	129.92	116.85	13.07		+46 <sup>7</sup>	+48 <sup>7</sup>						
13+00	129.15	117.05	12.10									
	129.29	117.08	12.21	13+15 <sup>5</sup>								
14+00	129.13	117.25	11.88		+47 <sup>8</sup>	14+36 <sup>3</sup>						
						+38 <sup>6</sup>						
15+00	129.94	117.45	12.49									
				15+87 <sup>3</sup>	8" stub w							
0+00				0+00	W	E						
1+00	129.32	120.20	9.12		+40 <sup>3</sup>	+42 <sup>3</sup>						
					1+01.3							
2+00	128.49	120.40	8.09		+27 <sup>8</sup>	+29 <sup>8</sup>						
	128.43	120.42	8.01	2+10 <sup>0</sup>								
3+00	127.08	120.60	6.48		2+18 <sup>6</sup>	+20 <sup>6</sup>						
					2+88 <sup>8</sup>	+90 <sup>8</sup>						
4+00	125.57	120.80	4.77									
	125.27	120.84	4.43	4+19 <sup>0</sup>	+10 <sup>2</sup>	+12 <sup>2</sup>						
0+00					Y WEST	Y EAST						
					+20 <sup>0</sup>	+18 <sup>0</sup>						
1+00	129.82	120.20	9.62									
					+46 <sup>0</sup>	+17 <sup>5</sup>						
2+00	129.98	120.40	9.58									
	129.51	120.42	9.09	2+17 <sup>6</sup>	+58 <sup>5</sup>	+05 <sup>7</sup>						
3+00	128.67	120.60	8.07									
					+67 <sup>8</sup>	3+07 <sup>8</sup>						
4+00	125.83	120.80	5.03		+04 <sup>7</sup>	+15 <sup>7</sup>						
	125.58	120.84	4.74	4+27 <sup>8</sup>								

cont. line # 6

Line # 6A

Line # 6B

11616 - 6 on 8 - 2219 Bullinger - 7-25-56 - 11-19-66  
 B2265 - top - 2245 Bullinger - 12-24-64 - Moon & Son (top 2793)  
 B2255 - top - 2220 Cardinal - 1-7-65 - Ann. Co (14+78.9)  
 B5001 - top - 2219 Bullinger - 2-11-66 - Reynolds Alley (0+22.9)