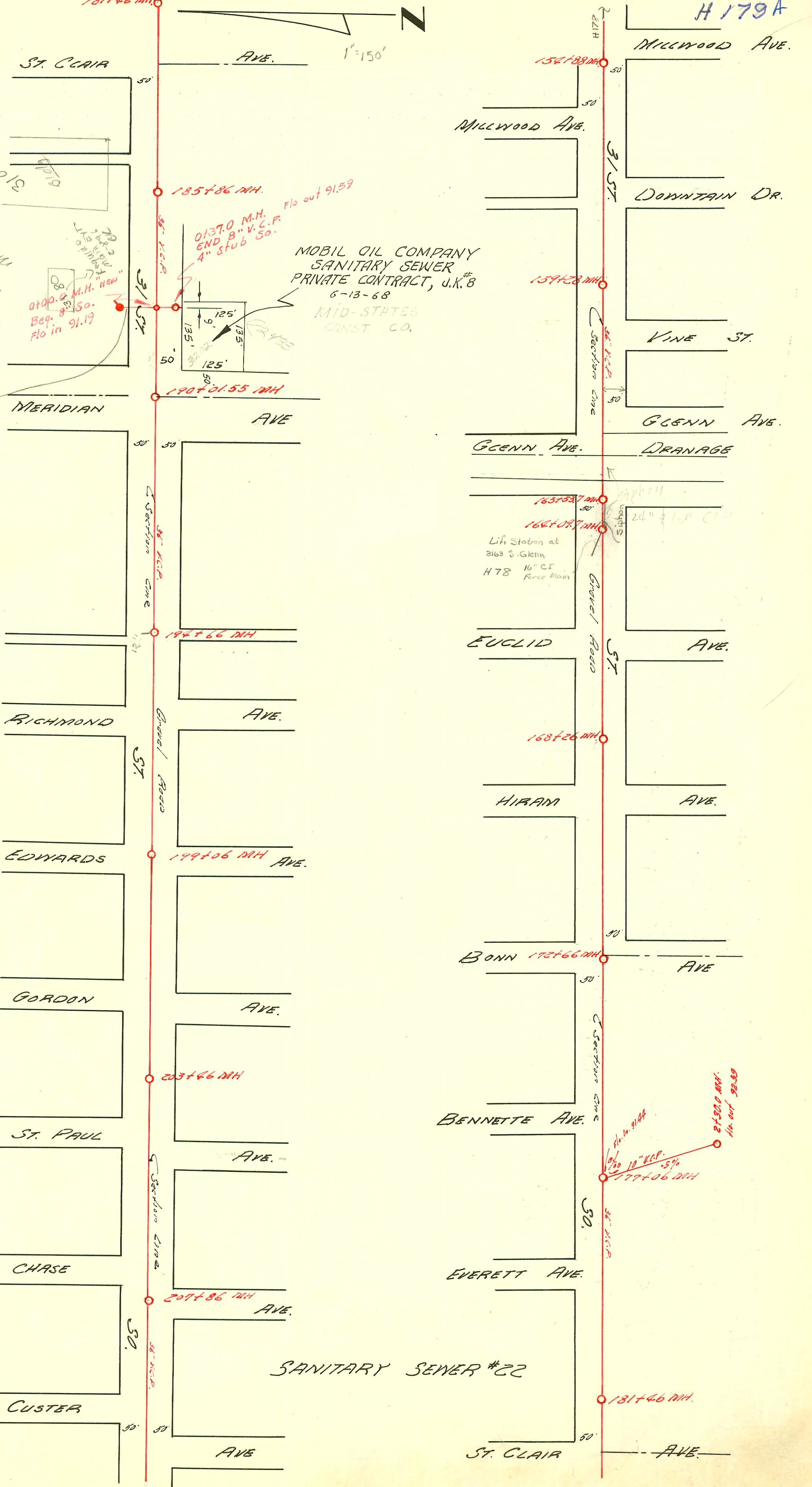


New Sewer See N-211  
Common address  
3100 S. Meridian  
M. P. 19  
3100 S. Meridian  
M. P. 19



MOBIL OIL COMPANY  
SANITARY SEWER  
PRIVATE CONTRACT, U.K.#8  
6-13-68  
MID-STATES  
CONST. CO.

Lift Station at  
3163 S. Glenn  
H78 16" CI  
Force Main

SANITARY SEWER #22

CONSTRUCTION RECORD					SERVICE RECORD							
STATION	ELEVATION		Depth	MANHOLE	4-INCH "Y" BRANCHES		No. of Permit		House Number		DATE OF PERMITS	
	Ground	Grade			North West	South East	North West	South East	North West	South East	North West	South East
155+00	96.0	87.35	8.65									
156+00	96.0	87.39	8.61									
157+00	96.0	87.44	8.56									
158+00	96.0	87.48	8.52									
159+00	96.0	87.53	8.47									
	96.0	87.56	8.44	159+28								
160+00	96.0	87.59	8.41									
161+00	95.8	87.63	8.17									
162+00	95.9	87.68	8.22									
163+00	96.0	87.72	8.28									
	96.6	87.75	8.85	163+53.7								
164+00	96.9	87.77	9.13									
	97.0	87.77	9.23	164+09.7								
165+00	96.5	87.82	8.68									
166+00	96.8	87.86	8.94									
167+00	97.0	87.91	9.09									
168+00	97.0	87.95	9.05									
	97.0	87.96	9.04	168+26								
169+00	97.0	88.00	9.00									
170+00	97.0	88.03	8.97									
171+00	97.0	88.09	8.91									
172+00	97.0	88.13	8.87									
	97.0	88.16	8.84	172+66								
173+00	97.0	88.18	8.82									
174+00	97.0	88.22	8.78									
175+00	97.1	88.27	8.83									
176+00	97.2	88.31	8.89									
177+00	97.0	88.36	8.64									
	97.0	88.36	8.64	177+06								
178+00	97.0	88.40	8.60									
179+00	97.0	88.45	8.55									
180+00	96.8	88.49	6.31									
181+00	97.0	88.54	8.46									
	96.9	88.56	8.34	181+46								
182+00	96.9	88.58	8.32									
183+00	97.0	88.63	8.37									
184+00	97.3	88.67	8.63									
185+00	97.8	88.72	9.08									
	97.7	88.76	8.94	185+86								
186+00	97.9	88.76	9.14									
187+00	98.0	88.81	9.19									
188+00	98.1	88.85	9.25									
189+00	98.3	88.90	9.40									
190+00	98.7	88.94	9.76									
	98.8	88.94	9.86	190+01.55								
191+00	98.0	88.99	9.01									
192+00	98.4	89.03	9.37									
193+00	98.3	89.08	9.22									
194+00	98.2	89.15	9.08									
	98.4	89.16	9.24	194+86								
195+00	98.7	89.18	9.52									
196+00	98.4	89.23	9.17									
197+00	98.7	89.27	9.43									
198+00	98.7	89.32	9.38									
199+00	98.8	89.36	9.44	199+06								
200+00	98.9	89.40	9.50									
201+00	99.0	89.45	9.55									
202+00	99.1	89.49	9.61									
203+00	99.1	89.54	9.56									
	99.2	89.56	9.64	203+46								
204+00	99.3	89.58	9.72									
205+00	99.3	89.63	9.67									
206+00	99.4	89.67	9.73									
207+00	99.6	89.72	9.88									
	99.8	89.76	10.04	207+86								
208+00	99.8	89.76	10.04									
209+00	100.0	89.81	10.19									
210+00	99.9	89.85	10.05									

No 4" Branches

16310 & 2433 W. 31st S. Jim Arnold 5-21-86 - 07.370 mH on 31st

C9614-3202 S. Meridian - Mobil Oil Co. 4" Stuck So. - Riggs Pkby. Co. of M.H. 0+37