

10TH ST. H10⁵

474+82.8 MH.

471+91.1 MH. 9TH ST.

467+23 MH

20' CONC. ENCASED
C 36" WATER LINE

MURDOCK AVE. 462+54 MH.

457+69 MH

ELM ST. 452+91 MH

EDWARDS AVE. 452+91 MH

I 132 451+51 MH

I 132 448+77 MH

ST. PAUL AVE.

445+74 MH

445+00 MH

442+89 MH

CUSTER AVE.

SANITARY SEWER #22

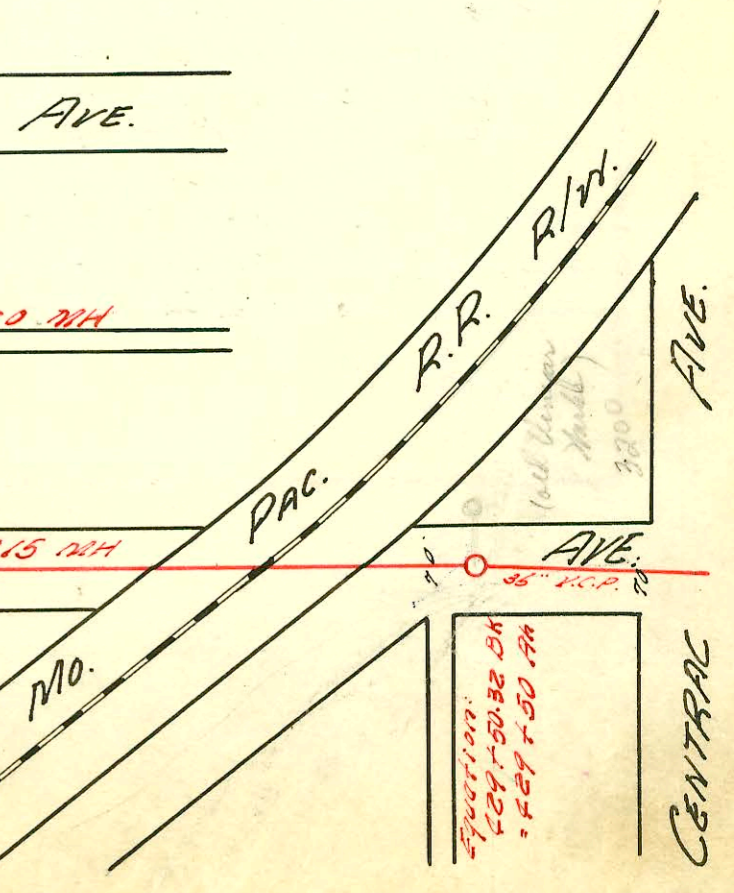
439+69 MH

MT. CARMEL AVE.

436+10 MH

SHERIDAN

432+29.15 MH



Station:
429+50.32 BM
427+50.19

CENTRAL AVE.

CONSTRUCTION RECORD

SERVICE RECORD

STATION	ELEVATION		Depth	MANHOLE	4-INCH "Y" BRANCHES		No. of Permit		House Number		DATE OF PERMITS	
	Ground	Grade			North West	South East	North West	South East	North West	South East	North West	South East
429+00	120.0	101.88	18.12									
	120.4	101.91	18.49	429+5032 Br. } Equations								
	120.4	101.91	18.49	429+50 An }								
430+00	120.5	101.93	18.57									
431+00	123.0	101.98	21.02									
432+00	119.2	102.02	17.18									
433+00	119.1	102.07	17.03									
434+00	119.0	102.11	16.89									
	119.2	102.13	17.07									
	119.2	102.53	16.67	434+29.15								
435+00	118.5	102.57	15.93									
436+00	119.2	102.62	16.58									
	119.2	102.62	16.58	436+10								
437+00	119.3	102.69	16.61									
438+00	119.8	102.75	17.05									
439+00	119.5	102.80	16.70									
	119.2	102.85	16.35	439+69								
440+00	119.2	102.87	16.33									
441+00	119.0	102.93	16.07									
442+00	119.4	102.98	16.42									
	119.0	103.03	15.97	442+89								
443+00	118.9	103.04	13.86									
444+00	118.9	103.10	15.80									
445+00	119.0	103.15	15.85	445+00								
	119.0	103.18	15.82	445+74								
446+00	119.0	103.20	15.80									
447+00	119.8	103.25	16.55									
448+00	119.4	103.31	16.09									
	119.0	103.37	15.63	448+79								
449+00	119.0	103.38	15.62									
450+00	116.5	103.44	13.06									
451+00	115.2	103.50	11.70									
	115.0	103.53	11.47	451+51								
452+00	115.0	103.56	11.44									
	115.2	103.61	11.59									
	115.2	103.71	11.49	452+91								
453+00	115.3	103.72	11.58									
454+00	114.4	103.77	10.63									
455+00	115.7	103.83	11.87									
456+00	115.8	103.89	11.91									
457+00	115.7	103.95	11.75									
	115.4	103.99	11.21	457+69								
458+00	115.4	104.01	11.39									
459+00	115.5	104.06	11.64									
460+00	115.5	104.12	11.38									
461+00	115.0	104.18	10.82									
462+00	115.0	104.24	10.76									
	115.2	104.27	10.93	462+54								
463+00	115.5	104.30	11.20									
464+00	115.6	104.35	11.25									
465+00	116.0	104.41	11.59									
466+00	115.8	104.47	11.33									
467+00	115.8	104.53	11.27									
	115.8	104.54	11.26	467+23								
468+00	115.3	104.59	10.71									
469+00	115.6	104.64	10.96									
470+00	115.7	104.70	11.00									
471+00	116.0	104.76	11.24									
	117.8	104.81	12.99	471+91.1								
472+00	117.2	104.82	12.38									
473+00	117.0	104.88	12.12									
474+00	115.3	104.93	10.87									
	116.0	104.98	11.02	474+82.8								
475+00	116.1	104.99	11.11									
476+00	116.5	105.05	11.45									
477+00	116.9	105.11	11.79									
478+00	116.2	105.17	11.03									
479+00	115.5	105.22	10.28									
	116.0	105.23	10.77									
	116.0	105.33	10.67	479+00.03								

30" y" Branches

M
10-5-1965

top # 3508 - 2803 W Elm - Reynolds - 9-24-56 - in MH #448+79 on 30" City main sewer in Elm Street (By special permission of City Engineers office)

top # B2705 - 2622 1/2 Central - Buckley Inc - 1-21-65 in MH #452+91 on 30" City main sewer in Elm St (By special permission of City Engineers - Sellers)

500 LF