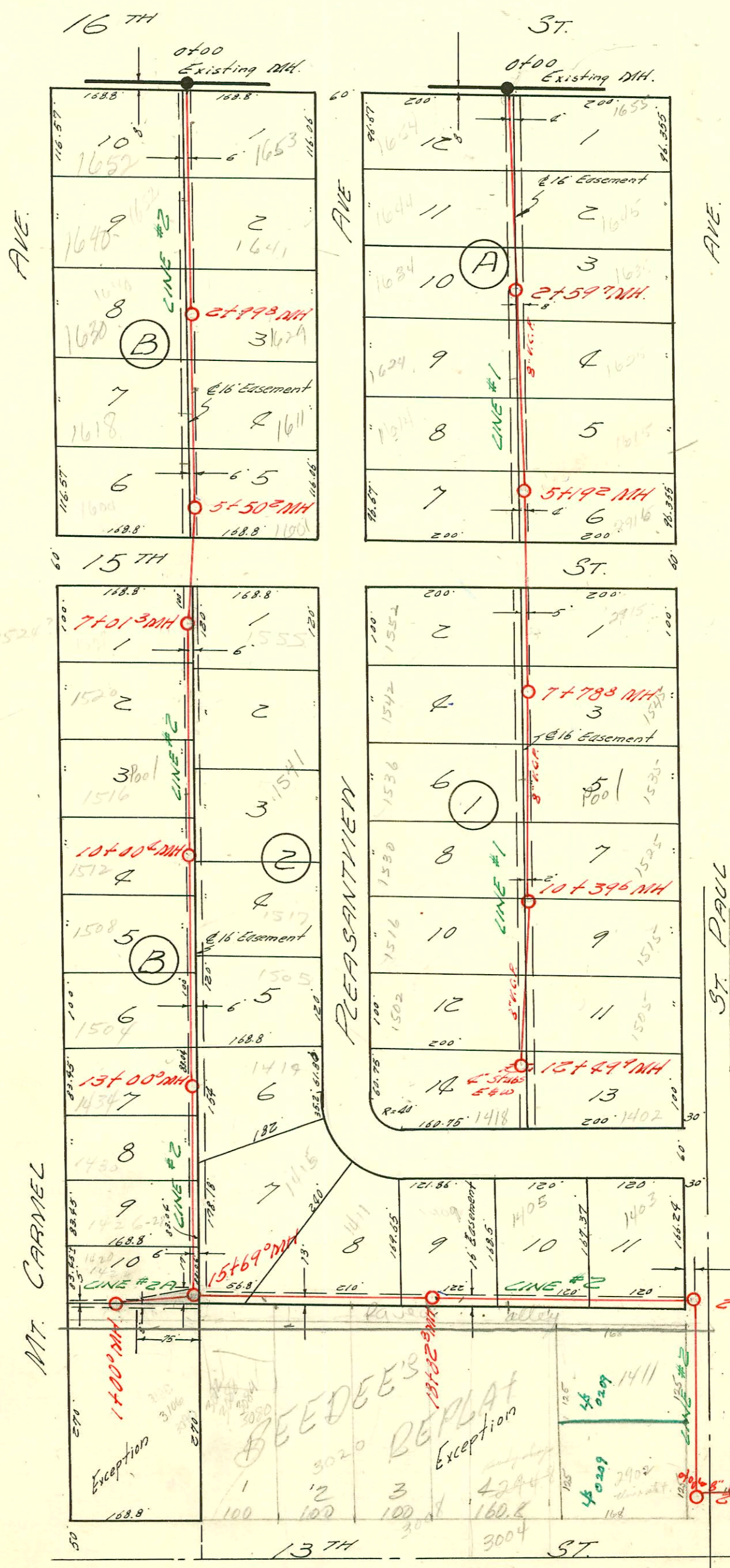
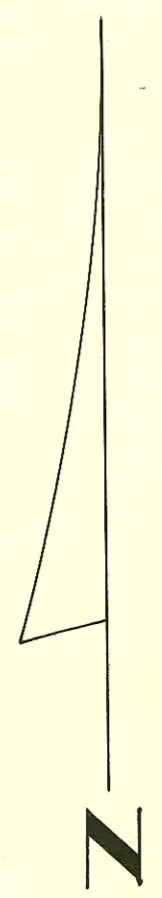


1=150



STA.	GRD.	GRADE	DEPTH
0+00	122.1	118.20	3.9
0+20	121.8	118.28	3.0
0+40	120.9	118.36	2.5

BY UTILITY CONTR.
 JUNE 10, 1958
 NO BOOK.

Y.N. 0+38 # 8598
 fire station

LAT. 7 SUB. 10 S.S. #22
 W. B. CARTER CONSTR. CO. SEPT. 13 '56
 BK NO. K-71 PROJ. NO. C 26-56

CONSTRUCTION RECORD

SERVICE RECORD

Line #1

STATION	ELEVATION		Depth	MANHOLE	4-INCH "Y" BRANCHES		No. of Permit		House Number		DATE OF PERMITS	
	Ground	Grade			North West	South East	North West	South East	North West	South East	North West	South East
0+00	124.1	112.6	11.5	Existing MH.								
					+849	+677	#2488	#295	1664 Pleasantview	1035 St Paul	9-20-56	7-26-57
1+00	124.0	113.0	11.0									
					+532	+473	#2483	#2483	1624 Mc Pleasantview	1645 Pleasantview	3-6-01	9-20-56
2+00	123.4	113.4	10.0									
					+500	+480	#2485	#2485	1634 Pleasantview	1635 Pleasantview	9-20-56	9-20-56
3+00	123.4	113.7	9.7	2+597								
					+434	+416	#2821	#242	1624 Mc Pleasantview	1625 Pleasantview	2-26-01	2-21-01
4+00	122.8	114.2	8.6									
					+527	+363	#2480	#2480	1614 Pleasantview	1615 Pleasantview	9-20-56	9-20-56
5+00	122.7	114.6	8.1									
					+050	+030	16259	#2479	1600 Pleasantview	1616 Pleasantview	10-17-62	9-20-56
6+00	122.7	114.7	8.0	5+190								
7+00	122.7	115.0	7.7									
8+00	122.7	115.0	7.7									
9+00	122.7	115.0	7.7									
10+00	122.7	115.0	7.7									
11+00	122.7	115.0	7.7									
12+00	122.7	115.0	7.7									
13+00	122.7	115.0	7.7									
14+00	122.7	115.0	7.7									
15+00	122.7	115.0	7.7									
16+00	122.7	115.0	7.7									
17+00	122.7	115.0	7.7									
18+00	122.7	115.0	7.7									
19+00	122.7	115.0	7.7									
20+00	122.7	115.0	7.7									
21+00	122.7	115.0	7.7									
22+00	122.7	115.0	7.7									
23+00	122.7	115.0	7.7									
24+00	122.7	115.0	7.7									
25+00	122.7	115.0	7.7									
26+00	122.7	115.0	7.7									
27+00	122.7	115.0	7.7									
28+00	122.7	115.0	7.7									
29+00	122.7	115.0	7.7									
30+00	122.7	115.0	7.7									
31+00	122.7	115.0	7.7									
32+00	122.7	115.0	7.7									
33+00	122.7	115.0	7.7									
34+00	122.7	115.0	7.7									
35+00	122.7	115.0	7.7									
36+00	122.7	115.0	7.7									
37+00	122.7	115.0	7.7									
38+00	122.7	115.0	7.7									
39+00	122.7	115.0	7.7									
40+00	122.7	115.0	7.7									
41+00	122.7	115.0	7.7									
42+00	122.7	115.0	7.7									
43+00	122.7	115.0	7.7									
44+00	122.7	115.0	7.7									
45+00	122.7	115.0	7.7									
46+00	122.7	115.0	7.7									
47+00	122.7	115.0	7.7									
48+00	122.7	115.0	7.7									
49+00	122.7	115.0	7.7									
50+00	122.7	115.0	7.7									
51+00	122.7	115.0	7.7									
52+00	122.7	115.0	7.7									
53+00	122.7	115.0	7.7									
54+00	122.7	115.0	7.7									
55+00	122.7	115.0	7.7									
56+00	122.7	115.0	7.7									
57+00	122.7	115.0	7.7									
58+00	122.7	115.0	7.7									
59+00	122.7	115.0	7.7									
60+00	122.7	115.0	7.7									
61+00	122.7	115.0	7.7									
62+00	122.7	115.0	7.7									
63+00	122.7	115.0	7.7									
64+00	122.7	115.0	7.7									
65+00	122.7	115.0	7.7									
66+00	122.7	115.0	7.7									
67+00	122.7	115.0	7.7									
68+00	122.7	115.0	7.7									
69+00	122.7	115.0	7.7									
70+00	122.7	115.0	7.7									