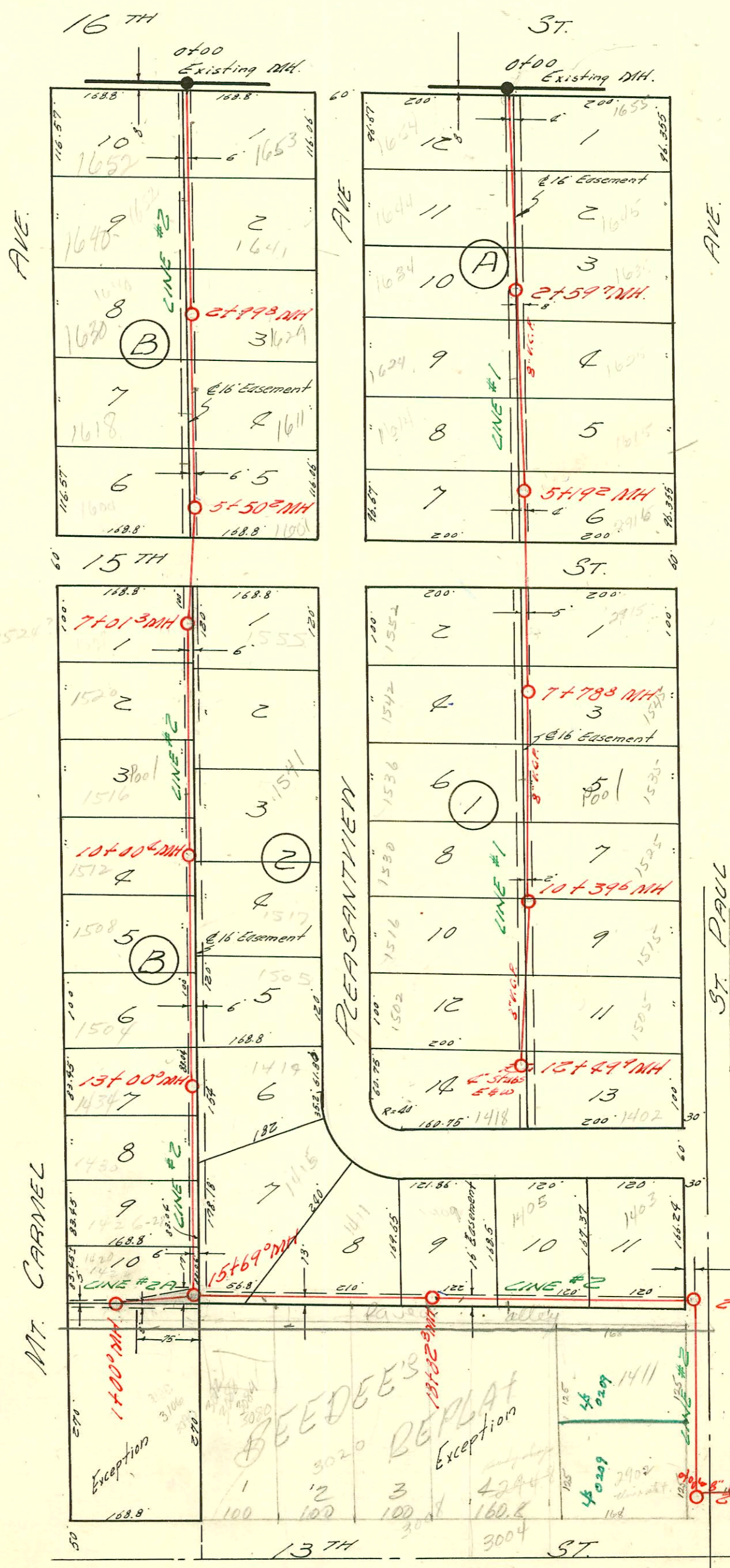
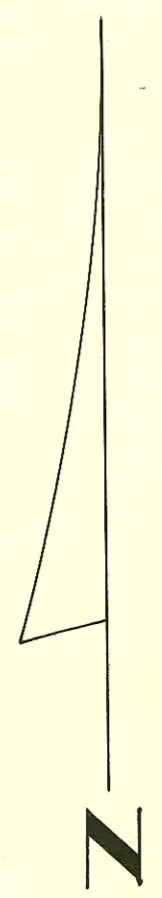


1=150



STA.	GRD.	GRADE	DEPTH
0+00	122.1	118.20	3.9
0+20	121.8	118.28	3.0
0+40	120.9	118.36	2.5

BY UTILITY CONTR.
JUNE 10, 1958
NO BOOK.

Y.N. 0+38 # 8598
fire station

LAT. 7 SUB. 10 S.S. #22
W. B. CARTER CONSTR. CO. SEPT. 13 '56
BK NO. K-71 PROJ. NO. C 26-56

197

CONSTRUCTION RECORD

SERVICE RECORD

STATION	ELEVATION		Depth	MANHOLE	4-INCH "Y" BRANCHES		No. of Permit		House Number		DATE OF PERMITS	
	Ground	Grade			North West	South East	North West	South East	North West	South East	North West	South East
11+00	122.6	115.5	7.1									
12+00	123.9	115.7	8.2									
13+00	126.9	115.9	10.0	+00°	+089	+069			1434 N. Pleasantview		4-23-62	10-8-66
14+00	125.9	116.1	9.8		+68°	+934	15522	2680	1504 N. Pleasantview		9-14-56	8-26
15+00	124.6	116.3	8.3		12+544		2700		1430 N. Mt. Carmel		8-12-64	
					14+345	+32.5	3668	8287	1415 Pleasantview		6-28-65	10-17-58
16+00	123.4	116.5	6.9		14+169		1015		1420-22 N. Mt. Carmel		8-19-80	10-31-66
	124.8	116.5 IN	8.3	15+69°	Y NORTH	Y SOUTH						
		116.4 OUT	8.4			+863						
17+00	123.9	116.7	7.2			+335						
						+370						
						+872						
18+00	124.0	116.8	7.2			+522	17+73.8	2679	3020 W. 13th		10-8-56	11-23-77
						+864						
						+350						
	122.5	116.95	5.6	18+828		+750						
19+00	122.5	117.0	5.5		+959				1409 Pleasantview			10-8-53
						+258						
						19+773		24934		3004 W 13th		3-13-90
20+00	121.5	117.1	2.4					2387				3-24-67
						+16			1404 Pleasantview		6-22-77	
21+00	121.0	117.3	3.7		20+76.4	20+526	69848		1405 Pleasantview		3-16-79	
					20+59.60		75843		1407 St Paul		12-21-77	
						+036						
					21+49.7	21+330						
22+00	121.0	117.4	3.6			+80			1403 Pleasantview		6-22-77	
	121.1	117.6 IN	3.5	22+167								
		117.5 OUT	3.6			+824 X.W.						
						+923 X.W.						
23+00	120.9	117.7	3.2		23+65.3			49850	1411 St. Paul		6-10-75	
						+815 X.W.						
						+92° X.W.						
24+00	122.2	117.8	4.4									
						+022						
						+630						
						+650 W.		14294	290 20th 13th St		6-14-61	
Line 2A 0+00	125.0	116.5	8.5	Existing MH								
						+069		9677		3106 W E		12-16-91
						+426		3901		2108 W. 13th		2-20-57
						+610						
						+710		5335		3112 W. 13th		9-20-57
						+923		76624		3116 W. 13th		2-28-80
	126.1	116.9	9.2	17+00°								

#9103 - Top - 3110 W 13th - Reynolds - 8-18-57
 5335 Top 3114 W 13th - Coleman - 10-18-57
 8287 top - 1415 Pleasantview - Livingston Bldg 10-17-58 (14+87)
 B2386 top 2920 W 13th - Box No Elroy - 3-4-65 (24+32.1)
 C9889 Top 3080 W 13th - Sewers - 8-1-68 (6461)
 C76624 3116 W 13th Sewer in on 3114 line at Chalmers + Wye one Bldg. (No Record of Council for 3114)

H197A