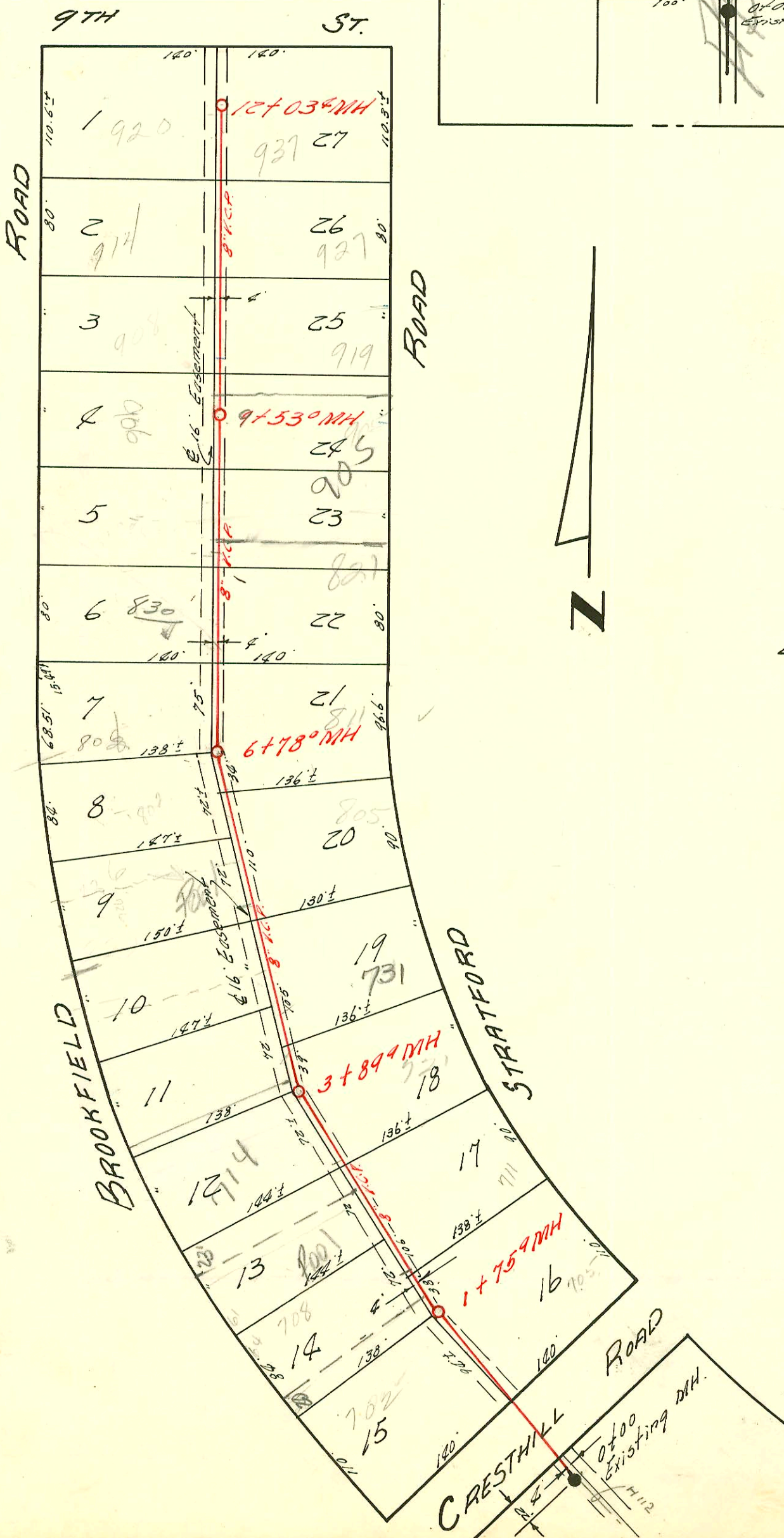


LAT. 20 SUB. 3 S.S. #22  
 W.B. CARTER CONST. CO. INC. SEPT. 18 '56  
 BK. NO. K-27 PROJ. #C2667



LAT. 5 SUB. 5A W.S.  
 DEVELOPMENT, INC. SEPTEMBER 18 '56  
 BK. NO. K-35 PROJ. NO. C2674

