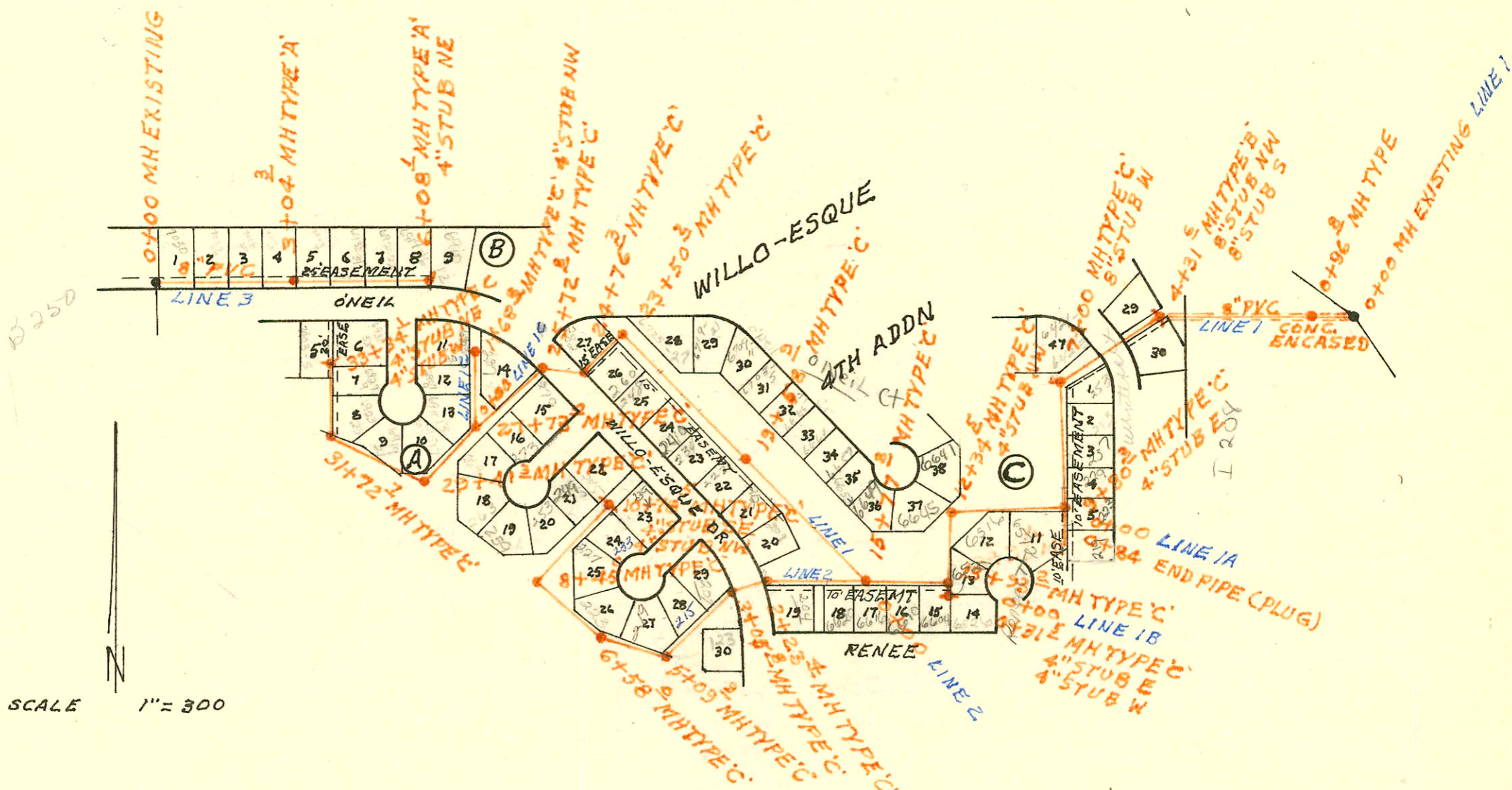
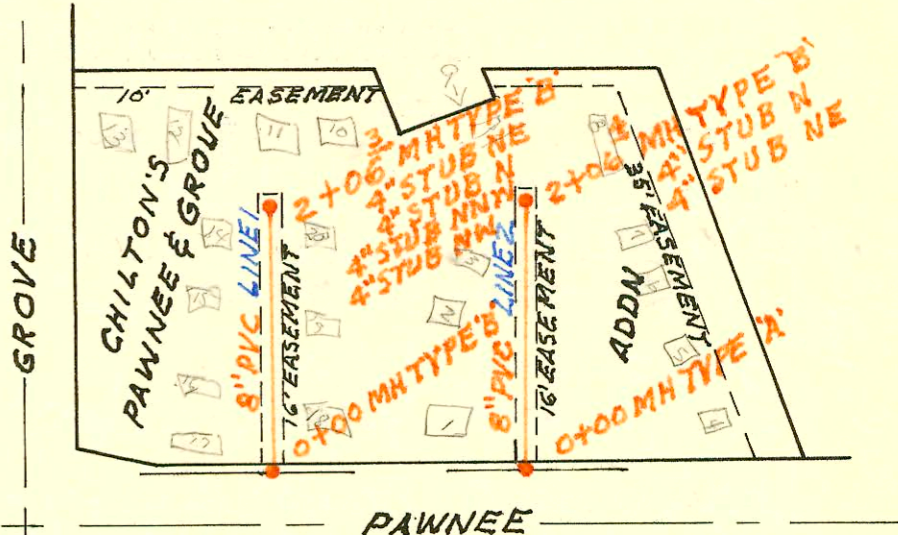


LATERAL 14 SAN SEWER N^o 12
BUILT BY: UTILITY CONTR INC
PROJ. N^o 468-76-245-81054-000-000-001
BOOKED 7-25-81 FROM-AG 18
(SEE PAGE H215)

on map 10-65

SCALE 1"=150'



SCALE 1"=300'

LATERAL 5 MAIN 6 SOUTHWEST INTERCEPTOR
BUILT BY: WB CARTER CONST. CO.
PROJ. N^o 468-76-245-80891-000-000-001
BOOKED 7-31-81 FROM LES 30

on map

6-52

CONSTRUCTION RECORD

SERVICE RECORD

STATION	ELEVATION		Depth	MANHOLE	4-INCH "Y" BRANCHES		No. of Permit		House Number		DATE OF PERMITS	
	Ground	Grade			North West	South East	North West	South East	North West	South East	North West	South East
LATERAL 5 MAIN 6 SOUTHWEST INTERCEPTOR												
LINE 1 0+00	116.0	107.59	8.4	0+00 EXISTING								
	115.6	107.79	7.8									
		107.99	7.6	0+96.8								
1+00	115.6	108.00	7.6									
2+00	111.8	108.39	3.4									
3+00	113.7	108.79	4.9									
4+00	130.4	109.19	21.2									
	130.3	109.37	21.0									
		121.00	9.3	4+31.6	8" STUB NW	8" STUB S						
5+00	132.3	121.27	11.0									
6+00	133.0	121.67	11.3									
	134.2	122.07	12.1	7+00	8" STUB W	7+35 tap	13476		2537			4-16-85
		122.17	12.0									
8+00	135.6	122.57	13.0									
9+00	136.1	122.97	13.1									
	136.2	123.29	12.9									
		123.39	12.8	9+80.3	4" STUB E		19788		243 n			4-16-85
							17463		237			12/1/87
									289			12-15-86
10+00	136.2	123.47	12.7									
11+00	136.8	123.87	12.9									
12+00	137.0	124.27	12.7									
	137.2	124.41	12.8									
		124.51	12.7	12+34.5	4" STUB NW		24481	18522	6641	6516	12-12-81	6-18-87
									0' Neil	Renee Ct		
13+00	137.0	124.77	12.2									
	136.8	125.15	11.7									
		125.25	11.6	13+93.2			21960		6520	Renee Ct		11-10-88
14+00	136.8	125.27	11.5									
15+00	137.3	125.67	11.6									
	138.8	125.98	12.8									
		126.08	12.7	15+77.8			18977		6610 W	Renee		9/2/87
							20276		6616	Renee		3-14-88
16+00	139.0	126.38	12.6									
17+00	142.0	127.74	14.3									
18+00	145.1	129.11	16.0									
19+00	145.2	130.47	14.7									
	144.1	131.27	12.8									
		131.38	12.7	19+58.9			19459		6649	W. O'Neil		10/2/87
20+00	144.2	131.54	12.7									
21+00	145.0	131.94	13.1									
22+00	145.2	132.34	12.9									
23+00	145.3	132.74	12.6									
	145.3	132.92	12.4									
		133.04	10.3	23+50.2								
24+00	145.5	133.24	10.3									
	146.0	133.55	10.5									
		133.65	10.4	24+76.3								
25+00	146.4	135.74	10.7									
	147.1	136.03	11.1									
		136.13	11.0	25+72.8								
26+00	147.6	136.24	11.4									
27+00	148.2	136.64	11.6									
	147.8	136.94	10.9									
		137.04	10.8	27+73.0								
28+00	147.6	137.15	10.5									
29+00	146.7	137.55	9.2									
	147.0	137.71	9.3									
		137.81	9.2	29+41.3								

CONT'D

#8412 6703 O'Neil (Thompson) 6-20-83 (59.0 NW) - (20+47.9)
 #8413 6705 O'Neil (Thompson) 6-20-83 (90.0 NW) - (20+48.9)
 #8411 6709 O'Neil (Thompson) 6-20-83 (148.0 NW) (21+06.9)
 #8414 6711 O'Neil " " (149.0 NW) (21+07.9)