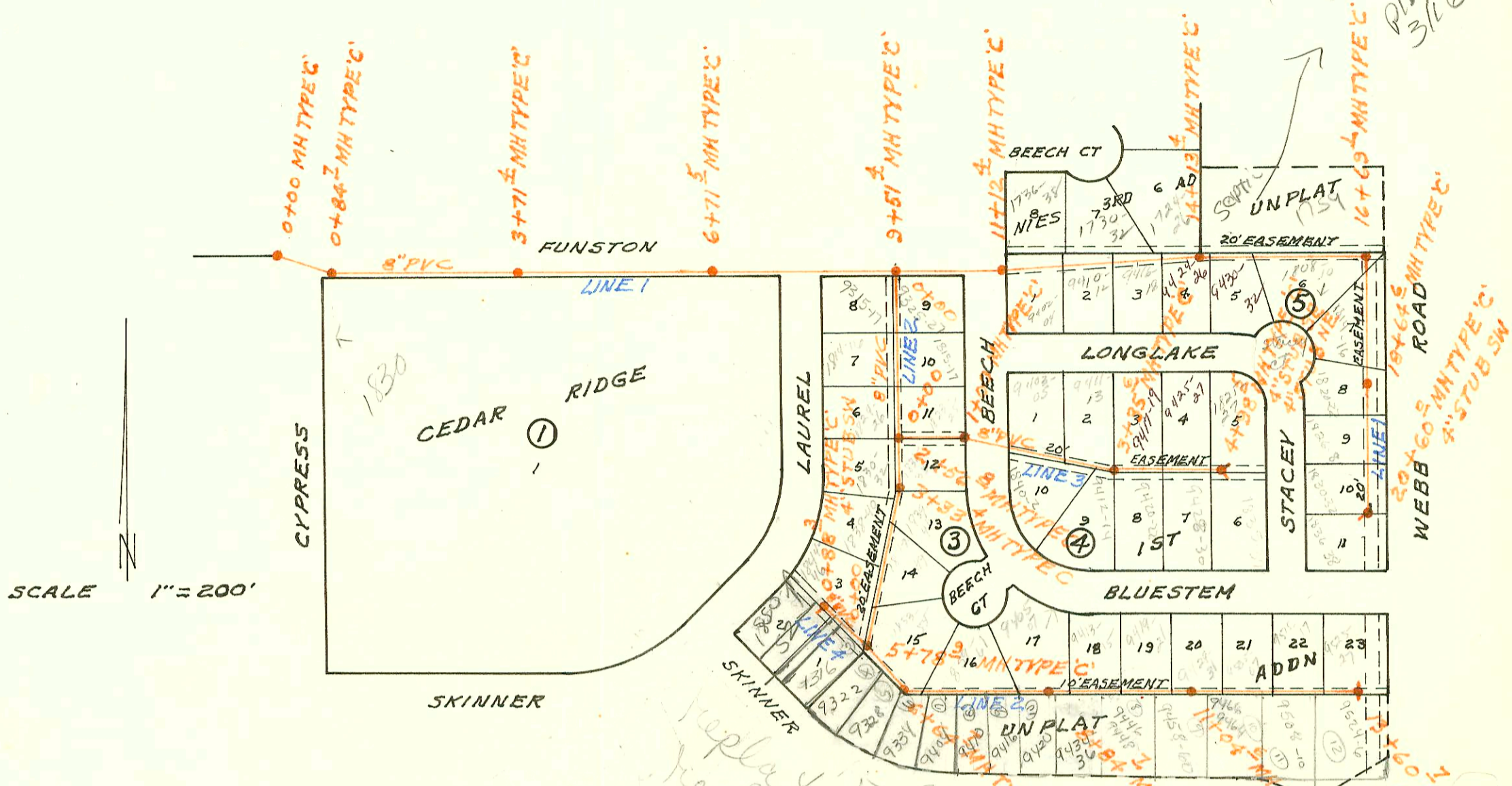


H250 Webb
 1759 S. require payment
 of facts for
 316610P



LATERAL 33 MAIN 17 WAR INDUSTRIES SEWER
 BUILT BY: W.B. CARTER CONST. CO.
 PROJ. N° 468-76-245-81014-000-000-001
 BOOKED 10-23-81 FROM JLA 31

on map

replay a
 check
 Plat Book

1759 S. ROAD
 1946 S. MH TYPE 'C'
 20' EASEMENT
 20' x 60' MH TYPE 'C'
 4" STUB SW
 7" MH TYPE 'C'
 4" STUB SW

SCALE 1" = 200'

H250

CONSTRUCTION RECORD						SERVICE RECORD						
STATION	ELEVATION		Depth	MANHOLE	4-INCH "Y" BRANCHES		No. of Permit		House Number		DATE OF PERMITS	
	Ground	Grade			North West	South East	North West	South East	North West	South East	North West	South East
LAT 160 SW 1 (CONT'D)												
LINE 2 0+00	92.6	83.80	8.8	0+00=2+01.5 LINE 1	0+27.0	0+11.0	8546	8589	7700 30 macArthur	#142	7-13-83	7-13-83
1+00	89.0	83.95	5.1		0+77.0	0+82.0	8549	8588	#341	#140	7-13-83	7-13-83
2+00	89.2	84.10	5.1		1+28.0		8548		#339		7-13-83	
3+00	89.5	84.25	5.3		1+20.6	1+25.6	8550	8587	#337	#138	7-13-83	7-13-83
	92.6	84.35	8.3	3+65.6	2+30.6	2+40.5	8551	8586	#335	#136	7-13-83	7-13-83
4+00	89.7	84.40	5.3		2+22.6	2+25.6	8552	8585	#333	#134	7-13-83	7-13-83
5+00	89.9	84.55	5.4		3+28.6	3+40.1	8553	8584	#331	#132	7-13-83	7-13-83
6+00	90.2	84.70	5.5		3+78.6	3+86.6	8555	8582	#327	#130	7-13-83	7-13-83
7+00	90.5	84.85	5.7		4+28.7	4+35.6	8554	8583	#327	#128	7-13-83	7-13-83
	92.6	84.90	7.2	7+30.5	4+79.6	4+75.5	8566	8581	#326	#126	7-13-83	7-13-83
8+00	90.8	85.00	5.8		5+28.6	5+18.5	8557	8580	#323	#124	7-13-83	7-13-83
9+00	91.0	85.15	5.9		5+79.6	5+81.5	8559	8579	#321	#122	7-13-83	7-13-83
10+00	91.2	85.30	5.9		6+29.6	6+22.5	8558	8578	#319	#120	7-13-83	7-13-83
	92.6	85.44	7.2	10+90.6	6+77.6	6+81.5	8560	8577	#317	#118	7-13-83	7-13-83
11+00	91.6	85.45	6.2		7+23.6		8562		#315		7-13-83	
	92.6	85.52	7.1	11+45.5	7+75.6	7+86.5	8561	8576	#313	#114	7-13-83	7-13-83
12+00	91.5	85.60	5.9		8+25.6	8+23.5	8566	8573	#311	#112	7-13-83	7-13-83
12+48	91.4	85.67	5.7	END PIPE	8+67.6		8574		#110		7-13-83	
LATERAL 33 MAIN 17 WAR INDUSTRIES SEWER												
LINE 1 0+00	171.3	159.45	11.9	0+00								
	171.5	159.79	11.7	0+84.7								
1+00	169.6	159.85	9.8									
2+00	169.6	160.25	9.4			1+67.4	6816		7830 2 Approved		10-20-82	
3+00	169.9	160.65	9.3									
	171.8	160.94	10.9	3+71.4								
4+00	170.2	161.05	9.2									
5+00	170.8	161.45	9.4									
6+00	171.5	161.85	9.7									
	172.7	162.14	10.6	6+71.5								
		162.44	10.3									
7+00	172.3	162.56	9.7									
8+00	173.2	162.86	10.3									
9+00	174.2	163.16	11.0			9+15.3	5573		7315 11 Contract		4-8-82	
	174.3	163.31	11.0	9+51.4								
		168.38	7.9			9+80.7	5574		7305-07 Contract		4-8-82	
10+00	175.2	166.58	8.6									
11+00	176.5	166.98	9.5		11+67.6		9347		7338 Contract		1-11-83	
	175.2	167.03	8.2	11+12.4	11+71.0	11+68.4	7832	6386	730 Contract	9402-04 Contract	1-10-83	8-20-82
12+00	177.0	167.38	9.6		12+62.4	12+27.0	6449	6389	732 Contract	9401-02 Contract	8-21-82	8-20-82
					12+64.4		6449		730 Contract		8-31-82	
13+00	177.2	167.78	9.4		13+71.6	13+21.0	7089	6390	732 Contract	9416-18 Contract	12-1-82	9-20-82
					13+20.2		7089		732 Contract		12-1-82	
14+00	177.5	168.18	9.3			14+01.7		6957		9424-6 Contract		11-9-82
	177.5	168.23	9.3	14+13.4								