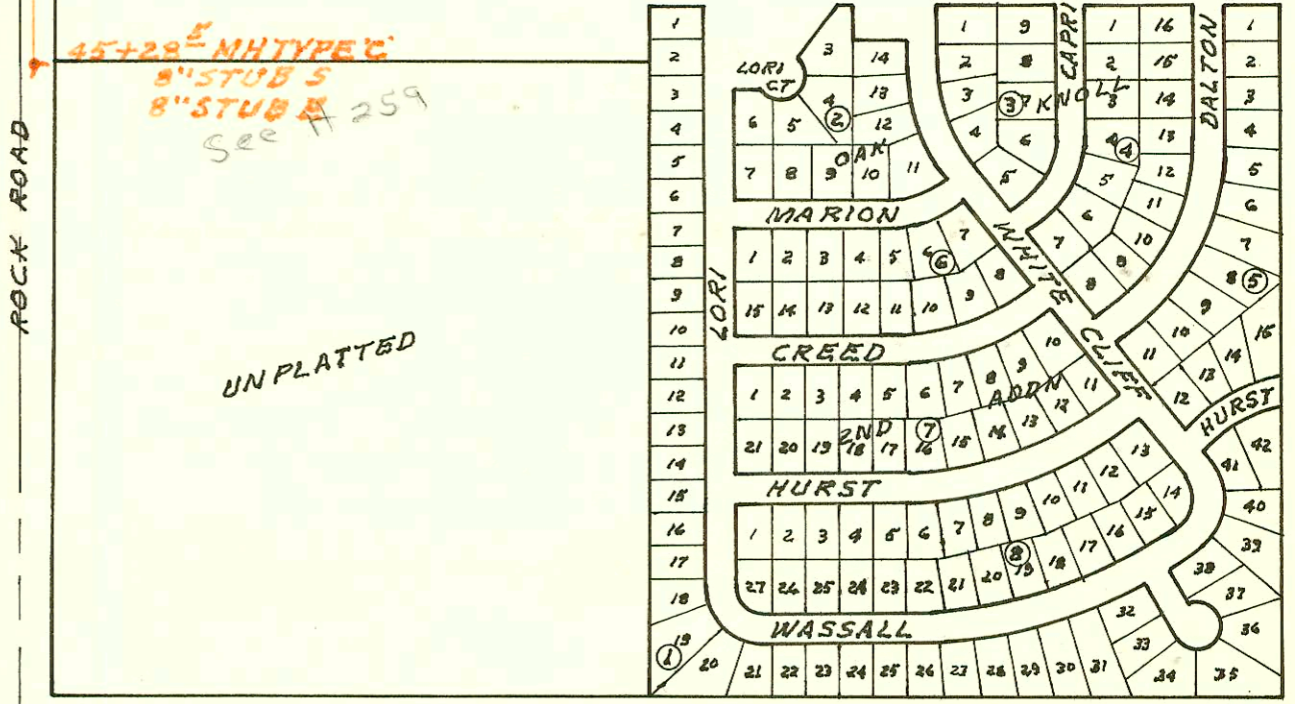


SCALE 1" = 400'

MAIN 23 WAR INDUSTRIES SEWER  
BUILT BY: UTILITY CONTR. INC.  
PROJ. N<sup>o</sup> 468-76-245-81001-000-001  
BOOKED 11-7-81 FROM SRL 14

*ON MAP*  
NO Rldg connection  
TO City Main - Refer  
TO City ENGINEER'S  
Office for Requirements  
TO Connect. BR 6-90



H256

CONSTRUCTION RECORD						SERVICE RECORD						
STATION	ELEVATION		Depth	MANHOLE	4-INCH "Y" BRANCHES		No. of Permit		House Number		DATE OF PERMITS	
	Ground	Grade			North West	South East	North West	South East	North West	South East	North West	South East
MAIN 23 WIS (CONT'D)												
23+00	172.2	164.09	8.1									
	173.6	164.99	8.6	23+60.0								
24+00	173.7	165.59	8.1									
25+00	175.4	167.09	8.3									
26+00	177.1	168.59	8.5									
27+00	179.1	170.09	9.0									
	180.0	170.85	9.2	27+50.7								
28+00	180.7	171.29	9.4									
29+00	182.6	172.19	10.4									
30+00	183.0	173.09	9.9									
31+00	186.3	173.99	12.3									
	194.0	174.23	19.8	31+26.0								
32+00	190.6	174.52	16.1									
33+00	192.7	174.92	17.8		32+78.4 Top		25406		8001 8002 below Oak Knoll		52490	
34+00	195.0	175.32	19.7									
	197.0	175.63	21.4	34+75.4								
35+00	195.3	175.72	19.6									
36+00	197.2	176.12	21.1									
37+00	198.7	176.52	22.2									
38+00	200.0	176.92	23.1									
	202.1	177.04	25.1	38+27.7								
39+00	200.8	177.32	23.5									
40+00	201.2	177.72	23.5									
41+00	201.3	178.12	23.2									
	203.5	178.43	25.1	41+76.7								
42+00	201.0	178.52	22.5									
43+00	200.6	178.92	21.7									
44+00	200.0	179.32	20.7									
45+00	199.4	179.72	19.7									
	201.5	179.84	21.7	45+28.5		6" STUB S 8" STUB E						
LATERAL 1 MAIN 23 WAR INDUSTRIES SEWER												
LINE 1 0+00	201.5	182.88	18.6	EXISTING								
1+00	199.0	183.28	15.7					2002 0318	2606 Rocked		11-22-02	
2+00	198.8	183.68	15.1									
3+00	198.5	184.08	14.4									
	198.2	184.24	14.0	3+41.2								
4+00	197.4	184.48	12.9									
5+00	196.6	184.88	11.7									
6+00	195.8	185.28	10.5									
	195.5	185.44	10.1	6+41.2								