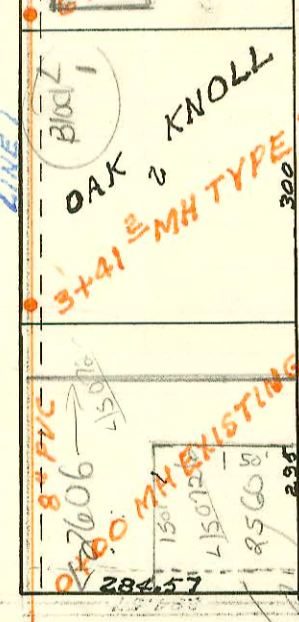


F291
2604 MHTAP SEP F391

NO CURB FOR H 256
NO CONC



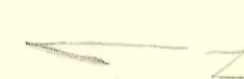
This address
P. he chg
11-2002

LATERAL 1 MAIN 23 WAR INDUSTRIES SEWER
BUILT BY: W.B. CARTER CONST. CO.
PROJ. N9468-76-245-80999-000-000-001
BOOKED 12-15-81 FROM JLA 38

Check for Bldg Permits

12.69

ADJIK
326-3592



H259

CONSTRUCTION RECORD							SERVICE RECORD					
STATION	ELEVATION		Depth	MANHOLE	4-INCH "Y" BRANCHES		No. of Permit		House Number		DATE OF PERMITS	
	Ground	Grade			North West	South East	North West	South East	North West	South East	North West	South East
LAT MAIN 23 WIS (CONT'D)												
LINE 2 CONT'D	15+00	210.7	196.49	14.2		15+46.6		9290		2610 Dalton		6-2-82
		211.2	197.03	14.2	15+82.6							
	16+00	211.4	197.24	14.2		16+48.6	16+16.1	9682	2620	2622 Dalton	2625 Linden	11-16-83 9-26-90
	17+00	211.9	197.89	14.0								
		211.8	198.51	13.3	17+96.1							
			198.61	13.2								
	18+00	211.7	198.64	13.1		18+52.6		9247		2630 Dalton		9-30-83
						18+86.1		9348		2638 Dalton		9-30-83
	19+00	211.4	199.29	12.1			13+37.1	10791		8816 Walnut		8-5-86
						19+50.8		9349		2644 Dalton		9-30-83
	20+00	211.4	199.94	11.5		20+16.0	20+32.0	11878	16093	2650 Dalton	2670 Walnut	8-25-84 4-10-86
		211.0	200.36	10.6	20+64.5	4" STUB NW	4" STUB S	14853	14852	2658 Dalton	2658 Walnut	10-16-85 10-16-85
LINE 2A	0+00	202.7	190.79	11.9	0+00=4+07.2							
					LINE 2			17252		2624 White Cliff		11-5-86
	1+00	201.8	191.16	10.6		0+29.0		5154	94 11227	2616 Walnut	2621 White Cliff	2-2-82 7-1-94
		201.0	191.34	9.7	1+48.2	4" STUB NW	4" STUB NE	5155	32829	2612 Walnut	2611 White Cliff	2-2-82 9-17-91
LINE 2B	0+00	204.6	192.37	12.2	0+00=7+20.2							
					LINE 2			7806	7808	2624 White Cliff	2631 Walnut	4-12-83 4-12-83
		205.2	192.68	12.5	0+78.3	4" STUB SE		7903		2642 Walnut		1-4-83
LINE 2C	0+00	204.2	192.46	11.7	0+00=7+71.6							
					LINE 2			12694	5159	2624 Walnut	2611 Walnut	4-16-84 5-2-82
		203.7	192.75	11.0	0+78.5	4" STUB NW	4" STUB NE	8288	5535	2624 Walnut	2623 Walnut	6-2-83 4-2-82
LINE 2D	0+00	206.5	195.03	11.5	0+00=10+69.2							
					LINE 2			8906	7900	2612 Walnut	2555 Walnut	8-4-83 1-4-83
		206.0	195.50	10.5	0+75.1	4" STUB NW	4" STUB NE	7095	8289	2607 Walnut	2547 Walnut	12-1-82 6-2-83
LINE 2E	0+00	206.5	195.03	11.5	0+00=10+69.2							
					LINE 2			4874	9366	2624 Walnut	2624 Walnut	12-2-81 10-4-82
	1+00	207.7	195.63	12.1		1+30.3	1+17.3	4857	5152	2632 Walnut	2625 Walnut	12-8-81 2-2-82
		208.0	196.08	11.9	1+75.3							
			196.18	11.8								
	2+00	208.4	196.33	12.1		2+31.3	2+32.9	5287	5156	2686 Walnut	2625 Walnut	2-22-82 2-2-82
	3+00	208.6	196.93	11.7			3+12.9	15542		2637 Walnut		1-28-86
		208.5	197.09	11.4	3+26.9			5228		2612 Walnut		2-22-82
			197.19	11.3								
		208.3	197.58	10.7	3+91.3	4" STUB N	4" STUB S	5876	1621	2648 Walnut	2624 Walnut	5-19-82 8-11-82
LINE 2F	0+00	210.0	197.50	12.5	0+00=13+63.3							
					LINE 2			17322		2544 Walnut		11-12-86
		209.1	197.98	11.1	0+79.5	4" STUB NW	0+78.5 TAP	5267	82260	2547 Walnut	2537 Linden	2-2-82 5-25-89
LINE 3	0+00	199.5	190.18	9.3	0+00=17+55.7							
					LINE 1							
	1+00	200.2	190.55	9.7								
	2+00	201.5	190.92	10.6		2+04.0	2+20.0	7084	7807	2648 Walnut	2654 Walnut	7-1-82 4-12-82
						2+87.0	2+94.0	7305	7306	8513 Walnut	8512 Walnut	1-4-83 1-4-83
	3+00	202.5	191.29	11.2								
		202.8	191.35	11.5	3+17.0							
			191.44	11.4								
	4+00	204.3	191.75	12.6		3+53.0	3+75.0	11277	7094	8521 Walnut	8516 Walnut	2-22-84 12-1-82
	5+00	205.5	192.12	13.4		4+75.0	4+73.0	6525	6790	8529 Walnut	8526 Walnut	9-10-82 8-5-86
						4+96.1 TAP		19507		8531 Walnut	8526 Walnut	9-9-82 11/04/87
						5187 TAP		19506		8546 Walnut	8546 Walnut	11/04/87
	6+00	205.9	192.49	13.4								
		206.0	192.53	13.5	6+11.1	6+29.5	6+41.7	7093	6115	8537 Walnut	8526 Walnut	12-1-82 7-7-82
			192.63	13.4		6+61.1		5534		8537 Walnut		4-2-82
		206.3	192.91	13.4	6+85.9	4" STUB SE		6225		2624 White Cliff		8-11-82
LINE 4	0+00	207.8	195.26	12.5	0+00=30+03.9							
					LINE 1							
	1+00	207.7	195.56	12.1		1+10.0 TAP		10712		8523 Walnut		12-7-84
	2+00	207.9	195.86	12.0								
		208.0	196.10	11.9	2+79.6	2+55.6	2+57.6	9890	9891	8522 Walnut	8530 Walnut	12-13-83 12-13-84
			196.20	11.8				8057		8527 Walnut		
	3+00	208.2	196.42	11.8		3+97.2		8058	11100	8535 Walnut	8512 Walnut	5-5-83 6-5-84

2625 Linden
405
ret 10-29-90
#30667

Form #192-020 (July, 1981)
CONT'D NEXT PAGE

93-18495-7 - 8214 E. Denker Ct - 7/14/83 - Appears they tapped 125 ft south of the 0+47.7 Manhole shown on page L287. PVC Saddle; 1-22 H; 4" SDR35

UK 71239 2604 S CAROL MIT TAP 11-3-86 Refer to Book FRM FOR HISTORY