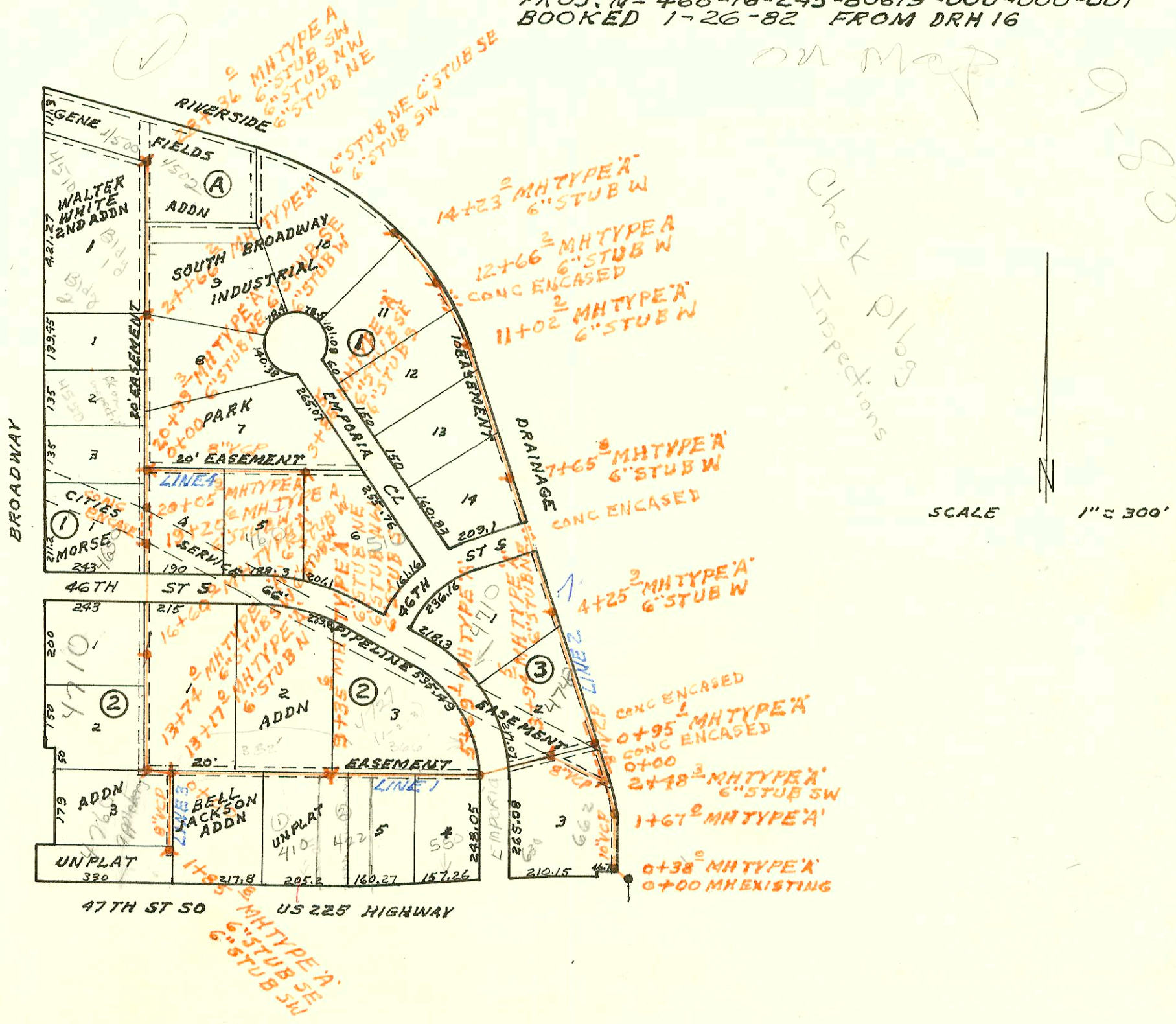
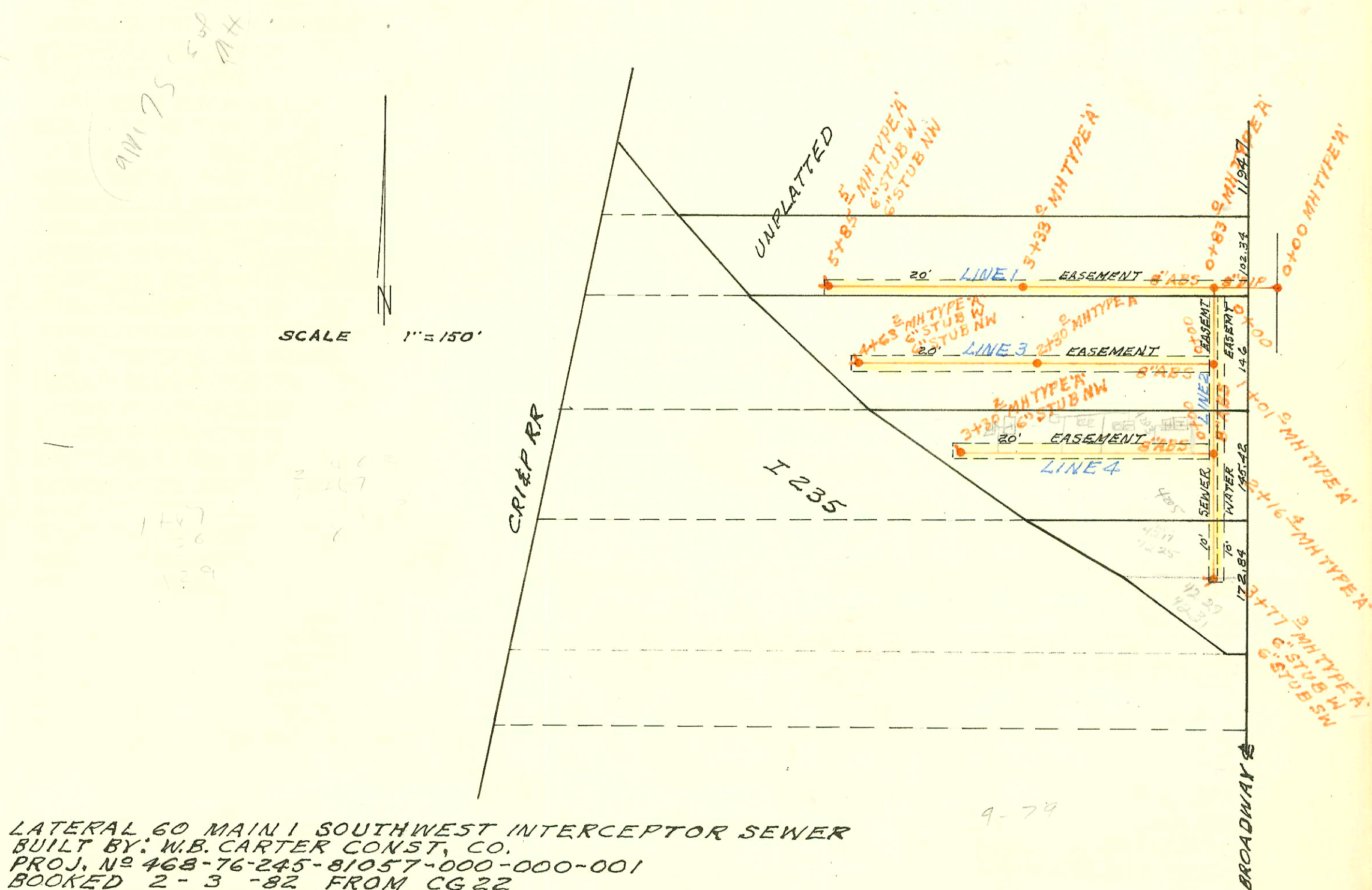


LATERAL 17 MAIN 2 SOUTHWEST INTERCEPTOR SEWER
 BUILT BY: W.B. CARTER CONST. CO.
 PROJ. NO 468-76-245-80619-000-000-001
 BOOKED 1-26-82 FROM DRH 16



Check p16g
 Inspections

SCALE 1" = 300'



SCALE 1" = 150'

LATERAL 60 MAIN 1 SOUTHWEST INTERCEPTOR SEWER
 BUILT BY: W.B. CARTER CONST. CO.
 PROJ. NO 468-76-245-81057-000-000-001
 BOOKED 2-3-82 FROM CG 22

9-79

H271

CONSTRUCTION RECORD

SERVICE RECORD

LAT 1
LINE 1
CONT'D

STATION	ELEVATION		Depth	MANHOLE	4-INCH "Y" BRANCHES		No. of Permit		House Number		DATE OF PERMITS	
	Ground	Grade			North West	South East	North West	South East	North West	South East	North West	South East
7+00	81.8	73.81	8.0									
8+00	83.0	73.96	9.0									
9+00	85.5	74.11	11.4									
10+00	85.6	74.16	11.4	9+35.6	6" STUB NE	6" STUB NW	6" STUB S					
11+00	86.0	74.41	11.6									
12+00	85.5	74.56	10.9									
13+00	85.0	74.71	10.3									
14+00	84.8	74.91	9.9									
15+00	84.4	75.06	9.3									
16+00	84.4	75.21	9.2									
17+00	84.5	75.36	9.1									
18+00	84.3	75.51	8.8									
19+00	84.0	75.66	8.3									
20+00	84.1	75.81	8.3									
21+00	84.0	76.01	8.0									
22+00	83.4	76.26	7.2									
23+00	83.3	76.41	6.9									
24+00	83.3	76.61	6.7									
25+00	83.5	76.84	6.7									
26+00	84.2	77.14	7.1									
27+00	84.2	77.44	6.8									
28+00	83.7	77.74	6.0									
29+00	83.6	77.85	5.8									
30+00	81.5	73.08	8.4									
1+00	81.7	73.28	8.4									
2+00	82.5	73.48	9.0									
3+00	82.3	73.68	8.6									
4+00	81.9	73.88	8.2									
5+00	81.7	74.08	7.6									
6+00	82.1	74.28	7.8									

LINE 2

#93-20508-7-12393-662 E 47th S. Serves S. Suite (2 lines). 4" CITY Top-15" N/C - 4" PVC 40.

8-25-93-4722 S. Broadway - wk old - on septic - no conn to city sewer

Form #192-020 (July, 1981)
CONT'D NEXT PAGE

* Orig. Bldg known as 4600 was added new bldg tied into existing sewer line 15' NE of NE corner of new Bldg - no meas. given for this Bldg and no record of orig. Bldg tie in.

Year	Month	Day	Time	Location	Remarks
1950	Jan	1	08:00
1950	Jan	2	08:00
1950	Jan	3	08:00
1950	Jan	4	08:00
1950	Jan	5	08:00
1950	Jan	6	08:00
1950	Jan	7	08:00
1950	Jan	8	08:00
1950	Jan	9	08:00
1950	Jan	10	08:00
1950	Jan	11	08:00
1950	Jan	12	08:00
1950	Jan	13	08:00
1950	Jan	14	08:00
1950	Jan	15	08:00
1950	Jan	16	08:00
1950	Jan	17	08:00
1950	Jan	18	08:00
1950	Jan	19	08:00
1950	Jan	20	08:00
1950	Jan	21	08:00
1950	Jan	22	08:00
1950	Jan	23	08:00
1950	Jan	24	08:00
1950	Jan	25	08:00
1950	Jan	26	08:00
1950	Jan	27	08:00
1950	Jan	28	08:00
1950	Jan	29	08:00
1950	Jan	30	08:00
1950	Jan	31	08:00
1950	Feb	1	08:00
1950	Feb	2	08:00
1950	Feb	3	08:00
1950	Feb	4	08:00
1950	Feb	5	08:00
1950	Feb	6	08:00
1950	Feb	7	08:00
1950	Feb	8	08:00
1950	Feb	9	08:00
1950	Feb	10	08:00
1950	Feb	11	08:00
1950	Feb	12	08:00
1950	Feb	13	08:00
1950	Feb	14	08:00
1950	Feb	15	08:00
1950	Feb	16	08:00
1950	Feb	17	08:00
1950	Feb	18	08:00
1950	Feb	19	08:00
1950	Feb	20	08:00
1950	Feb	21	08:00
1950	Feb	22	08:00
1950	Feb	23	08:00
1950	Feb	24	08:00
1950	Feb	25	08:00
1950	Feb	26	08:00
1950	Feb	27	08:00
1950	Feb	28	08:00
1950	Feb	29	08:00
1950	Feb	30	08:00
1950	Mar	1	08:00
1950	Mar	2	08:00
1950	Mar	3	08:00
1950	Mar	4	08:00
1950	Mar	5	08:00
1950	Mar	6	08:00
1950	Mar	7	08:00
1950	Mar	8	08:00
1950	Mar	9	08:00
1950	Mar	10	08:00
1950	Mar	11	08:00
1950	Mar	12	08:00
1950	Mar	13	08:00
1950	Mar	14	08:00
1950	Mar	15	08:00
1950	Mar	16	08:00
1950	Mar	17	08:00
1950	Mar	18	08:00
1950	Mar	19	08:00
1950	Mar	20	08:00
1950	Mar	21	08:00
1950	Mar	22	08:00
1950	Mar	23	08:00
1950	Mar	24	08:00
1950	Mar	25	08:00
1950	Mar	26	08:00
1950	Mar	27	08:00
1950	Mar	28	08:00
1950	Mar	29	08:00
1950	Mar	30	08:00
1950	Mar	31	08:00