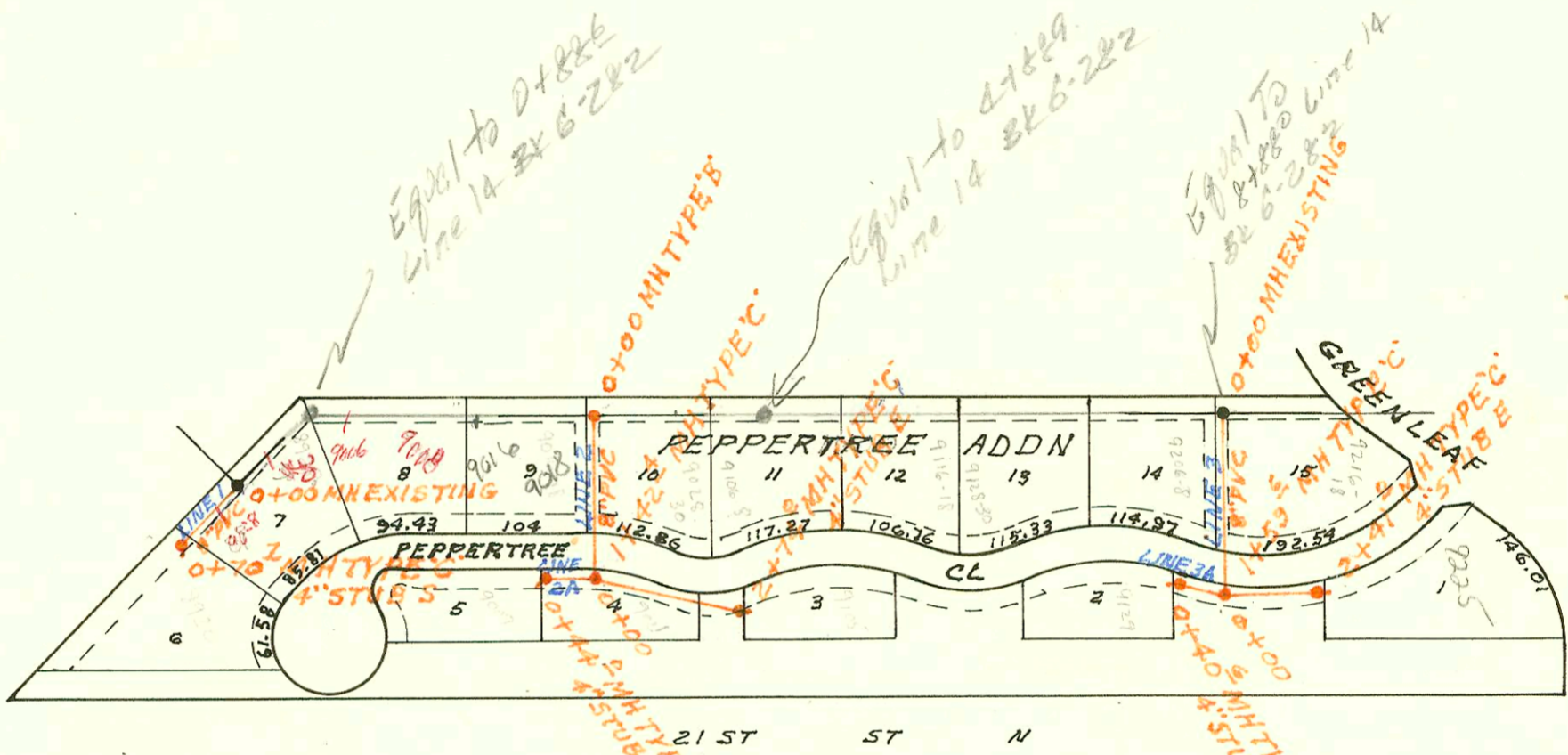
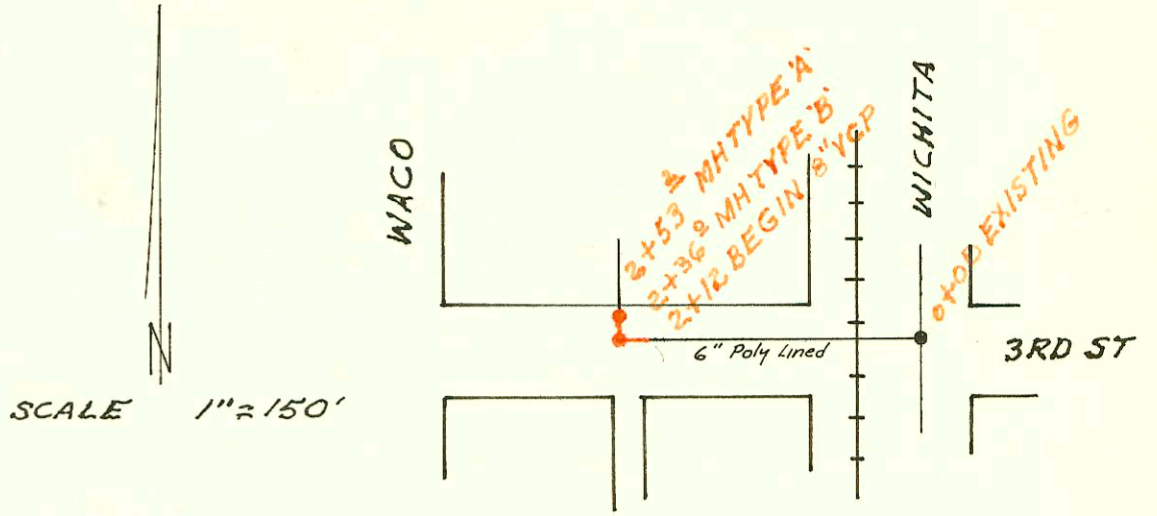


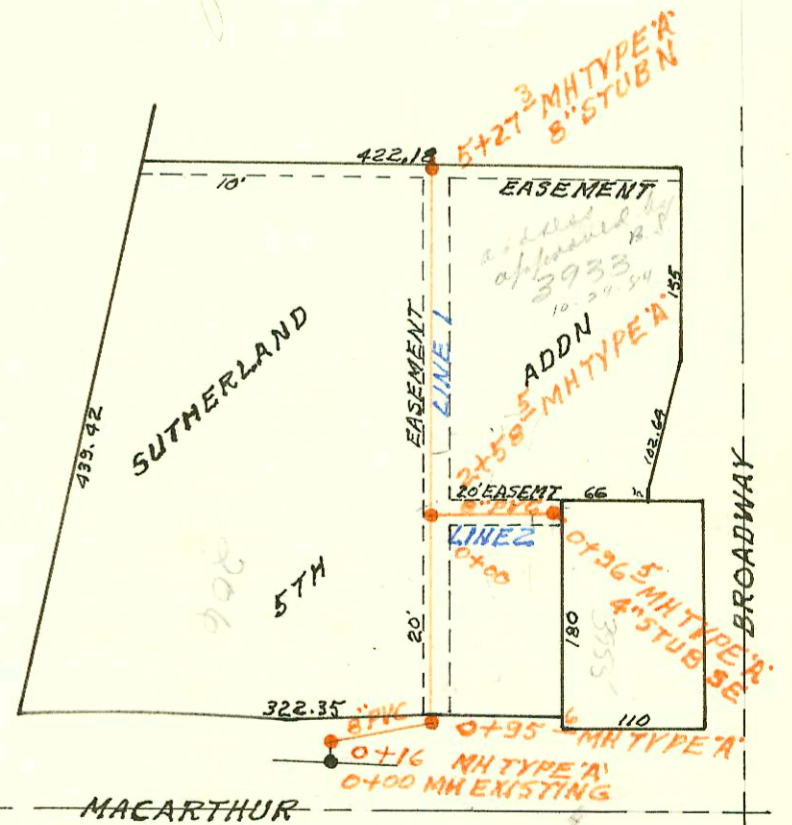
RECON POR. OF WEST SUBMAIN A SAN SEWER N21
IN 3RD ST WICHITA TO 140' ± WEST
BUILT BY: WB CARTER CONST. CO.
PROJ. N^o 468-76-245-81126-000-000-001
BOOKED 2-11-82 FROM DCD 101

on map



LATERAL 15 MAIN 22 WAR INDUSTRIES SEWER
BUILT BY: UTILITY CONTR. INC.
PROJ. N^o 468-76-245-81156-000-000-001
BOOKED 2-12-82 FROM CG 16A

on map



LATERAL 65 MAIN 1 SOUTHWEST INTERCEPTOR SEWER
BUILT BY: UTILITY CONTR. INC.
PROJ. N^o 468-76-245-81159-000-000-001
BOOKED 2-17-82 FROM DRH 6

on map

2-76

202 204

H274

CONSTRUCTION RECORD						SERVICE RECORD						
STATION	ELEVATION		Depth	MANHOLE	4-INCH "Y" BRANCHES		No. of Permit		House Number		DATE OF PERMITS	
	Ground	Grade			North West	South East	North West	South East	North West	South East	North West	South East
LAT 24 MAIN 7	55	N 23	(CONT'D)									
LINE 2A	0+00	207.8	194.85	13.0	0+00 = 0+52.7							
	1+00	207.7	195.25	12.5								
		208.0	195.50	12.5	1+61.6	4" STUB E						
						4" STUB S						
LINE 3	0+00	204.7	193.90	10.8	0+00 = 3+47.6							
					LINE 1							
	1+00	205.7	194.30	11.4				6489	3500 #100		9-7-82	
		204.7	194.73	10.3	1+23.6		7716		3500 N		3-21-83	
			194.53	10.2	1+33.6				Rock Rd			
		204.5	194.73	9.8	1+81.4				Rock Rd			
			194.83	9.7								
	2+00	204.8	194.90	9.9			1111	13156	3500 #200		6-5-84	3-7-85
		206.0	195.19	10.8	2+71.6	4" STUB W	7569		3500 N		3-2-83	
									Rock Rd			
RECON POR WEST SUBMAIN A SAN SEWER N ^o 1	0+00	111.5	107.17	4.3	0+00 EXISTING							
					6" PLASTIC							
	2+12	111.2			BEGIN NEW PIPE LINED							
		111.2	108.82	2.4	2+36.0							
			108.62	2.6								
		111.6	108.68	2.9	2+53.2							
			109.01	2.6								
LATERAL 15 MAIN 22 WAR INDUSTRIES SEWER	0+00	209.5	197.32	12.2	0+00 EXISTING			6149		8980		7-13-82
LINE 1		208.0	197.60	10.4	0+70.7	4" STUB S		6369		8980		8-18-82
								6370		8980		8-12-82
LINE 2	0+00	210.8	197.17	13.6	0+00	0+16.0	0+12.0	6094	6092	9018	7-6-82	7-6-82
								5757		9030		4-29-82
	1+00	210.6	197.57	12.9								
		210.9	197.74	13.2	1+42.4			6153				
			197.84	13.1								
		210.4	198.07	12.3	2+74.0	4" STUB E		6154		9105		7-13-82
		210.2	198.37	11.8								
LINE 2A	0+00	210.9	197.84	13.1	0+00 = 1+42.4							
		210.7	198.30	12.4	0+44.0	4" STUB SW		6152		9009		7-13-82
LINE 3	0+00	208.0	196.15	11.9	0+00 EXISTING							
								5116		9221		1-27-82
	1+00	209.0	196.55	12.5								
		209.2	196.79	12.4	1+59.6							
			196.89	12.3								
	2+00	208.7	197.05	11.7								
		208.5	197.21	11.3	2+41.0	4" STUB E		4937		9225		12-16-81
LINE 3A	0+00	209.2	196.89	12.3	0+00 = 1+59.6							
		209.7	197.30	12.4	0+40.6	4" STUB W		6151		9129		2-13-82
LATERAL 65 MAIN 1 SOUTHWEST INTERCEPTOR SEWER	0+00	89.8	80.71	9.1	0+00 EXISTING							
LINE 1		89.5	80.81	8.7	0+16							
			80.92	8.6								
		89.6	81.16	8.4	0+95.6							
			81.26	8.3								
1+00	89.1	81.27	7.8									
								5079		206 C		1-19-82
2+00	88.2	81.57	6.6									
	89.8	81.75	8.1	2+58.5	8" STUB E							
3+00	88.5	81.87	6.6									
4+00	88.7	82.17	6.5									
								12405		3733		10-29-84
5+00	89.0	82.47	6.5									
	90.9	82.55	8.4	5+27.3	8" STUB N							
LINE 2	0+00	89.8	81.84	8.0	0+00 = 2+58.5							
		89.5	82.24	7.3	0+96.5	4" STUB SE		12406		3733		10-29-84

#6150 8929 Reppenture (Branch) 7-13-82 (7-14-0100)