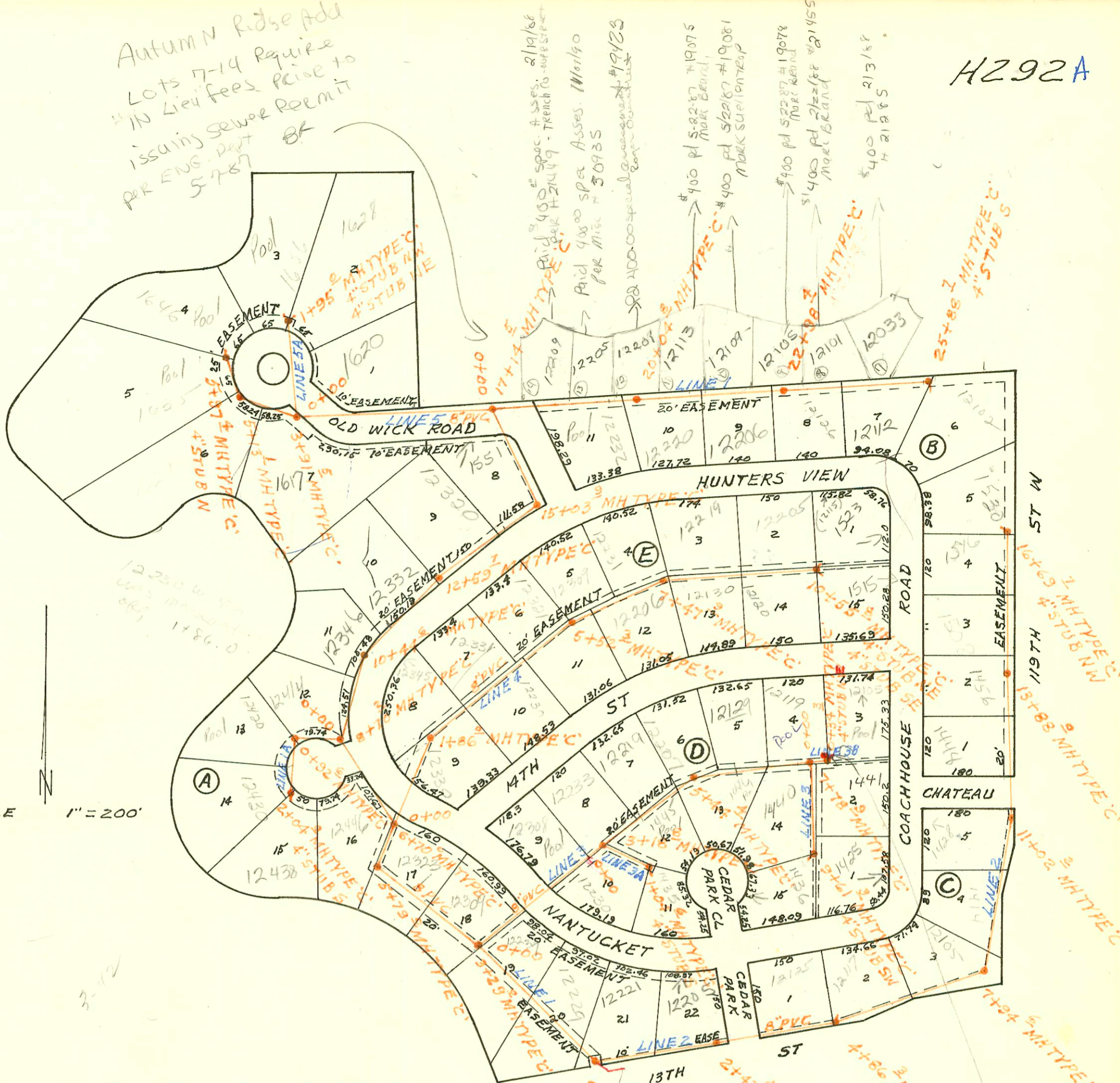
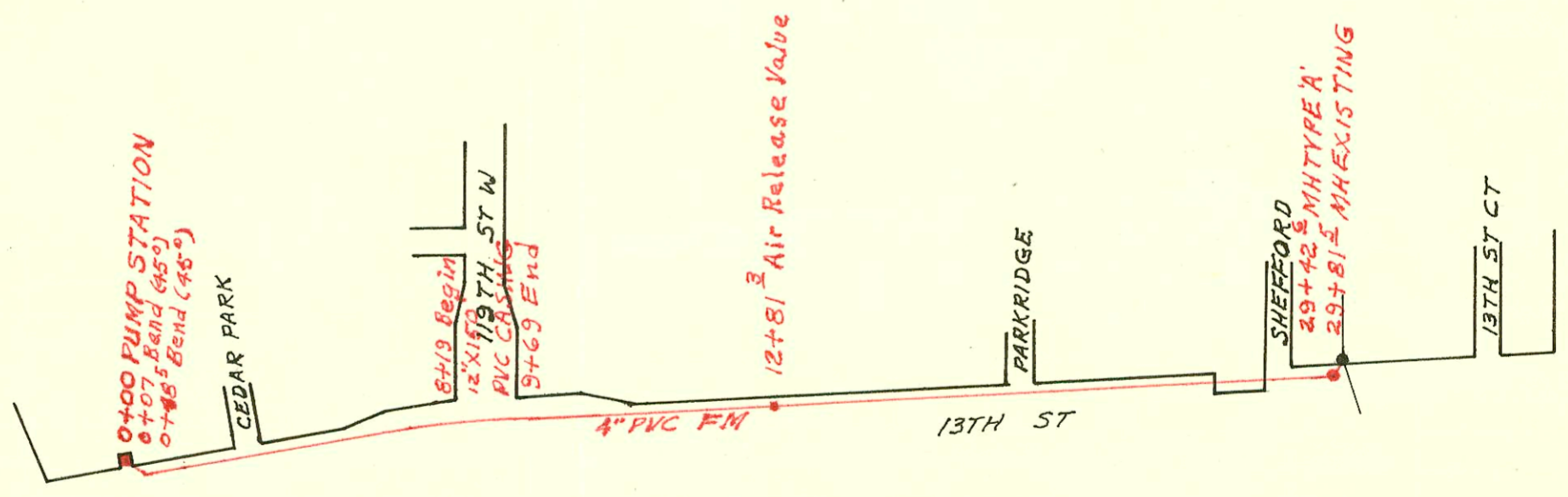


Autumn Ridge Add
 Lots 7-14 Require
 IN Lieu Fees Permit
 Issuing Sewer Permit
 PR ENG. Dept
 5-7-87 BF



LATERAL 162 SOUTHWEST INTERCEPTOR
 LIFT STATION & FORCE MAIN
 BUILT BY: UTILITY CONTR. INC.
 PROJ. No 468-76-245-81044-000-000-001
 BOOKED 6-28-82 FROM SRL3

on map 6-12



1. The first part of the document discusses the importance of maintaining accurate records of all transactions. It emphasizes that every entry should be supported by a valid receipt or invoice.

2. The second section details the various methods used to collect and analyze data. It includes a list of procedures and the tools used to ensure the reliability of the information.

3. The third part of the document describes the results of the study. It shows a clear trend in the data, which is consistent with the initial hypothesis.

4. Finally, the document concludes with a summary of the findings and a recommendation for further research. It suggests that more data should be collected to confirm the results.