

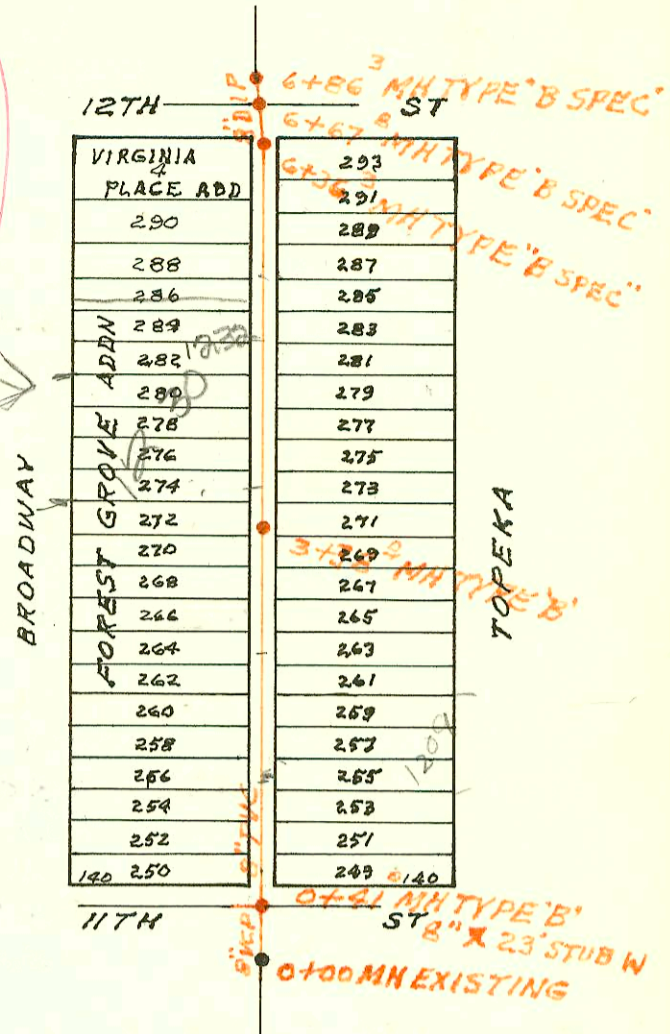
RECON PART E SUBMAIN B SAN SEWER N^o1
 IN ALLEY BTW BROADWAY & TOPEKA 11TH TO 12TH
 BUILT BY: W.B. CARTER CONST. CO.
 PROJ. N^o 468-76-245-81181-000-000-001
 BOOKED 6-24-82 FROM AG 25
 (SEE A181)

DN map 9-44

1232 N Broadway
 2001-00024-115101-AE Henning- 4" SCH 40 WYE WITH DONUT 149'S OF MH 6+36.3
 Trap installed, Replaced 7' low end.



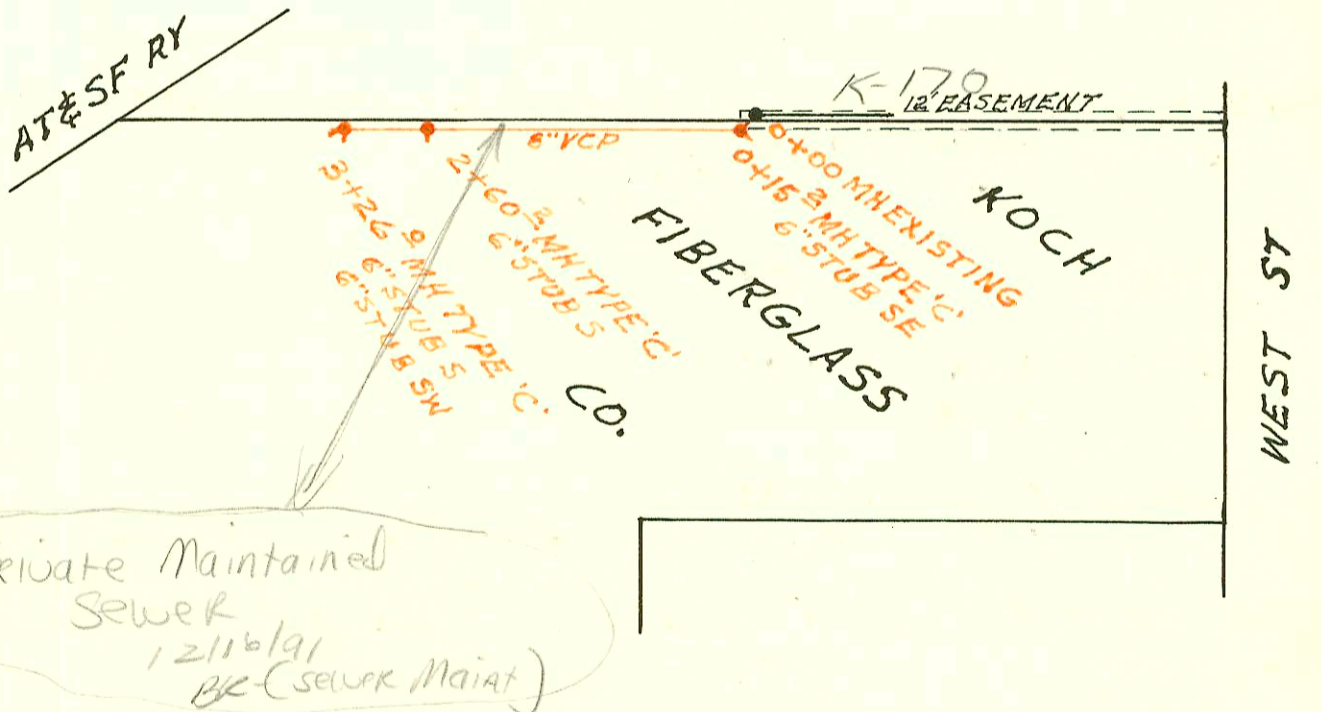
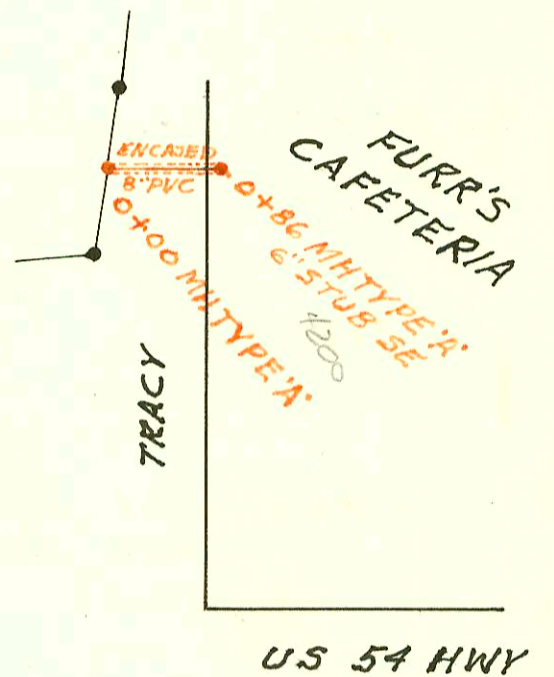
SCALE 1" = 150'



SANITARY SEWER FOR FURR'S CAFETERIA
 BUILT BY: PEARSON EXCAVATION CO.
 PROJ. N^o 468-76-245-80000-000-000-008
 BOOKED 6-30-82 FROM DCD 36

DN map

SCALE 1" = 150'



SCALE 1" = 150'

Private Maintained Sewer
 12/16/91
 BK (sewer Maint)

SANITARY SEWER FOR KOCH FIBERGLASS PRODUCTS CO.
 BUILT BY: W.B. CARTER CONST. CO.
 PROJ. N^o 468-76-245-80000-000-000-008
 BOOKED 7-6-82 FROM DCD 36

DN map

10-27

H296

CONSTRUCTION RECORD						SERVICE RECORD							
STATION	ELEVATION		Depth	MANHOLE	4-INCH "Y" BRANCHES		No. of Permit		House Number		DATE OF PERMITS		
	Ground	Grade			North West	South East	North West	South East	North West	South East	North West	South East	
LAT 66 WLS (CONT'D)													
LINE 6 0+00	187.9	176.30	11.6	0+00=8+54.7 LINE 5			10036		8920 81010		1-20-84		
1+00	188.2	176.79	11.5										
	188.8	176.81	12.0	1+04.3									
	189.2	177.13 177.23	12.1 12.0	1+81.9									
2+00	189.1	177.60	11.5		2+57 4" RISER W 9 D	1+94.98 2+54 4" RISER E 9 D	9270 10248		8935 E 8929 E		9-23-83 2-17-84	247W 250E	
3+00	190.5	179.62	10.9		2+77.9 TAP 3+27 4" RISER W 8 D	3+24 4" RISER E 8 D	18573 7648	7843	8911 E 8933 E	6-23-87	3-10-83	4-14-83	177W 180E
4+00	193.3	181.65	11.7		3+91 4" RISER W 9 D	3+88 4" RISER E 9 D	7647	7649	8937 8948 S	3-10-83	3-10-83	3-10-83	113E 116W
5+00	195.2	183.67	11.5		4+59 4" RISER W 9 D		7645						AS
	194.7	183.78	10.9	5+05.4	4" STUB SW	4" STUB E	7644	7650	8936 S 8941 E	3-10-83	3-10-83		← 1 →
REC ON PART E SUBMAIN B SAN SEWER N°1													
0+00	118.3	112.26	6.0	EXISTING									
	117.6	112.09	5.5	0+41.0									
1+00	118.2	112.29	5.9		0+92 6" W	1+08 6" E							
					1+87 6" W	1+40 6" E	7511037		1209 P TOP 10' Below		7-27-95		
2+00	118.2	112.63	5.6		2+40 6" W	2+43 6" E							
3+00	117.9	112.97	4.9		3+27 6" W	3+36 6" E							
	117.8	113.10	4.1	3+38.0	3+68 6" W	3+73 6" E							
4+00	117.8	113.30	4.5		4+87 6" W	4+61 6" E	2501 00674		1232 N & See Branching next pg	1-5-01			
5+00	117.6	113.63	4.0		5+18 6" W	5+34 6" E							
6+00	117.1	113.95	3.2			5+85 6" E							
	116.7	114.07	2.6	6+36.3		6+22 6" E							
				6+67.8	SWS MH								
	117.0	114.66	2.3	6+86.3									
SAN SEWER FOR FURR'S CAFETERIA													
0+00	117.2	109.56	7.6	0+00									
	117.6	109.82	7.8	0+86	ENCASED	6" STUB SE	3646		7200 W Kellough		7-9-81		
SAN SEWER FOR KOCH FIBERGLASS PRODUCTS CO.													
0+00	105.9	101.04	4.9	EXISTING									
	105.0	101.10	3.9	0+15.2	6" MH tap	6" STUB SE	3925		2501 S West St		8-17-81		
1+00	105.2	101.53	3.7		0+21.0		4072		2501 S West St		9-4-81		
2+00	105.6	101.91	3.7										
	105.8	102.14	3.7	2+60.2		6" STUB S							
3+00	105.6	102.32	3.3			6" STUB S							
	105.6	102.44	3.2	3+26.0		6" STUB SW	3926		2501 S West St		8-17-82		
SAN SEWER FOR PEPSI COLA BOT. CO. (CONT'D)													
LINE 1 CONT'D	11+00	81.98											
	11+65.7	82.53											
LINE 2	0+00	87.8	10.3	0+00=1+97 LINE 1									
		77.55		0+80.1									
		77.86		0+92.6									
		78.70											
		78.18											
		78.38											
	1+10.6	87.9	9.1										
LINE 3	0+00	86.6	7.3	0+00=5+16.9 LINE 1									
		79.26		0+90									
		80.66		1+00		6" STUB E							
		80.76											
		80.96											
		81.00											
	1+19.7	81.1	6.3										

JV 6095
247W 250E
177W 180E
113E 116W
AS

← 1 →

para 3

80' per